



FOR SUBLEASE

Tisch Tower

**3031 TISCH WAY, SUITE 800/806
SAN JOSE, CA 95128**

SIZE

6,682 Square Feet

LEASE RATE

\$2.50 psf Full Service - special rate through 9/15/26
\$4.60 psf Full Service

PLUG & PLAY

30 cubicles, lobby, office & conference tables/chairs

SUBLEASE TERM

Available Now through September 14, 2028

HIGHLIGHTS

- Immediate occupancy
- Premier West Valley office building adjacent to Santana Row
- 12-story high-rise with panoramic views
- Amenity-rich project with newly upgraded lobby, outdoor plaza and seating areas
- New fitness center and conference center
- Easy access to Interstate 280 and Highway 880/17
- Covered and surface parking - 3.6/1000
- Responsive on-site management and 24/7 security

For more information, please contact:

Patty Steele

Senior Managing Director
CA RE #00839635
t 408-982-8463
Patty.Steele@nmrk.com

Grant Meylan

Managing Director
CA RE #02078953
t 408-987-4153
Grant.Meylan@nmrk.com

3155 Olsen Avenue, Suite 575
San Jose, CA 95117

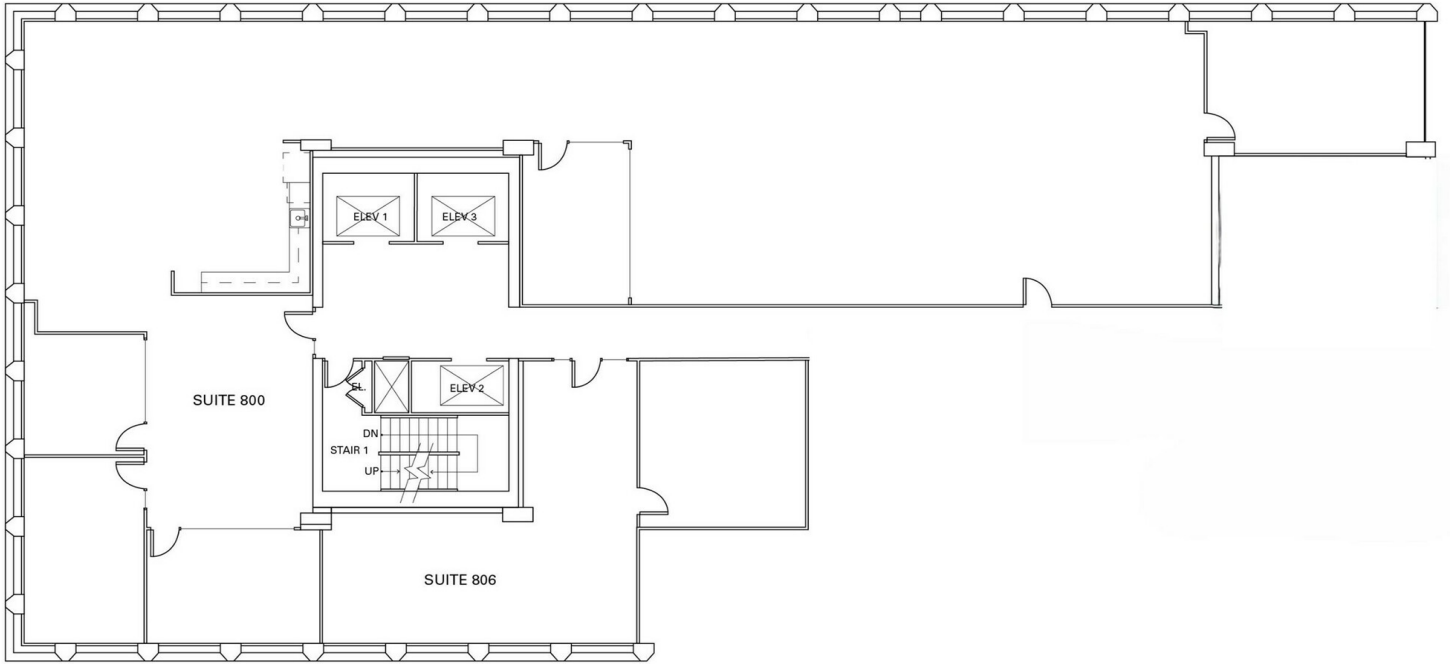


nmrk.com

NEWMARK

Corporate License #0832933

The information contained herein has been obtained from sources deemed reliable but has not been verified and no guarantee, warranty or representation, either express or implied, is made with respect to such information. Terms of sale or lease and availability are subject to change or withdrawal without notice.

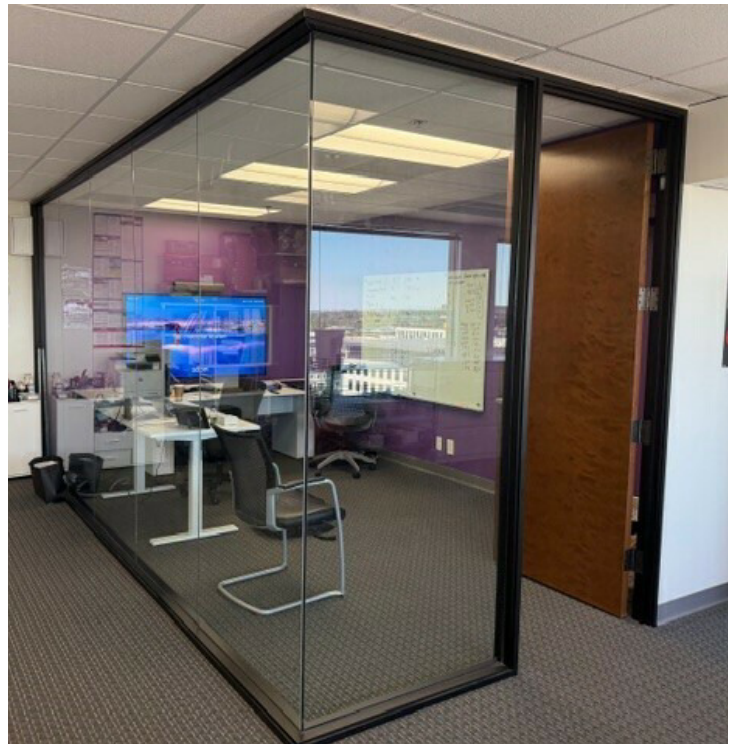
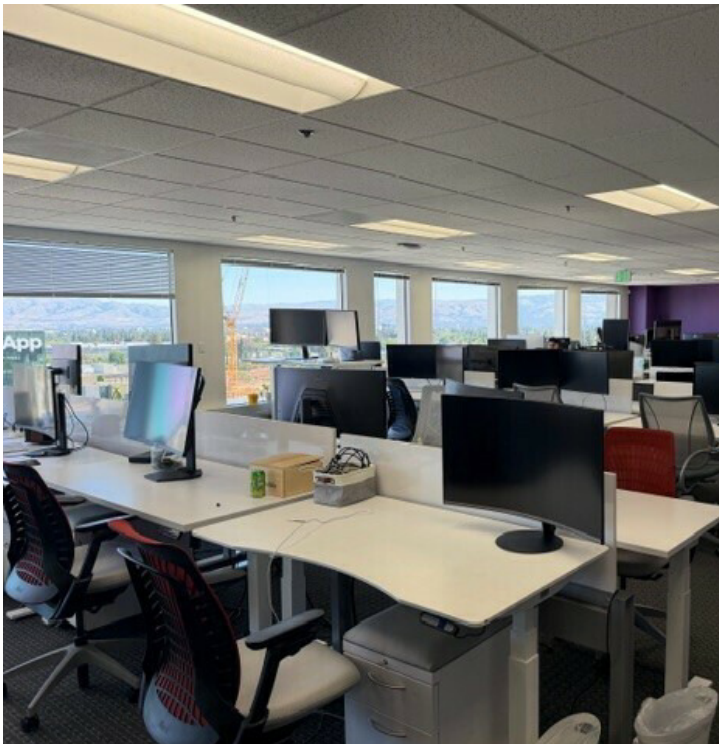
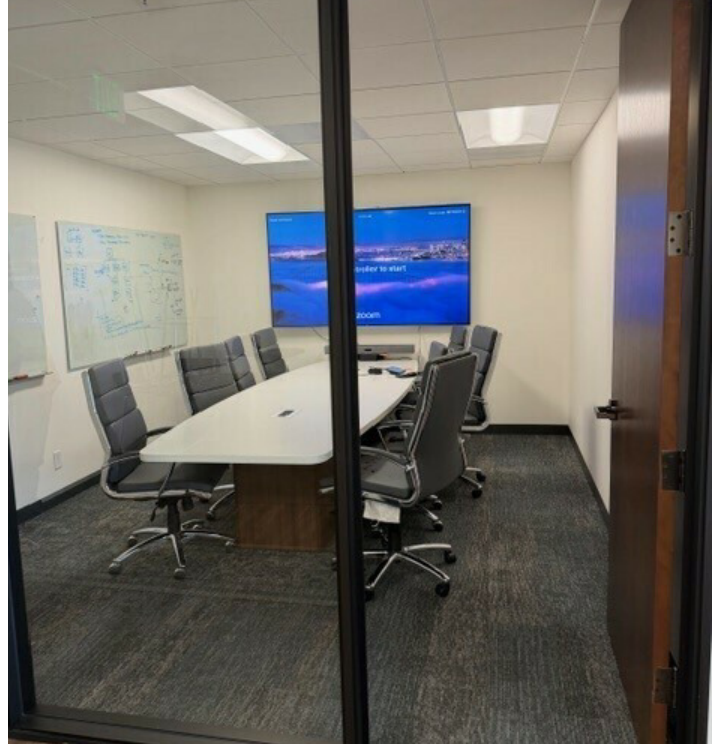


Patty Steele

Senior Managing Director
CA RE #00839635
t 408-982-8463
Patty.Steele@nmrk.com

Grant Meylan

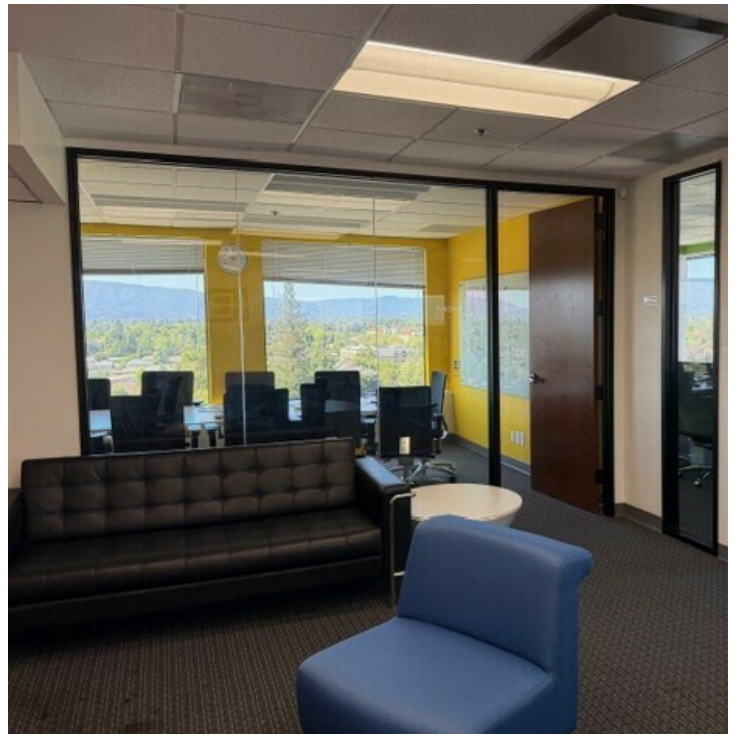
Managing Director
CA RE #02078953
t 408-987-4153
Grant.Meylan@nmrk.com



Patty Steele
Senior Managing Director
CA RE #00839635
t 408-982-8463
Patty.Steele@nmrk.com

Grant Meylan
Managing Director
CA RE #02078953
t 408-987-4153
Grant.Meylan@nmrk.com

TISCH TOWER / 3031 TISCH WAY, SUITE 800/806



Patty Steele

Senior Managing Director
CA RE #00839635
t 408-982-8463
Patty.Steele@nmrk.com

Grant Meylan

Managing Director
CA RE #02078953
t 408-987-4153
Grant.Meylan@nmrk.com

NEWMARK