

**CENTURY**  
**MACHINERY**  
SALES • RENTALS  
MACHINE TOOLS

SOUTH ARTS DISTRICT · LOS ANGELES

# THE CENTURY AT SANTA FE

CREATIVE INDUSTRIAL CAMPUS · ESTABLISHED 1923

1923-1947 South Santa Fe Avenue · Los Angeles, CA 90021

---

**FOUND.**  
REAL ESTATE

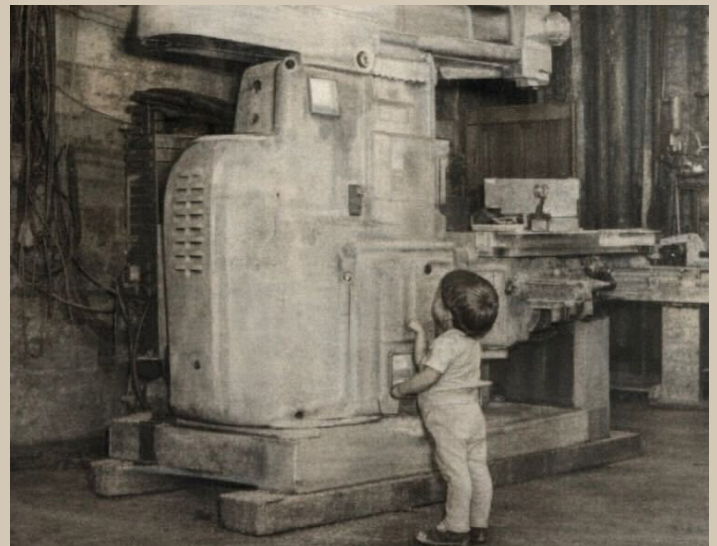
# Nine Decades on Santa Fe Avenue

Century Machinery Co. opened its doors on South Santa Fe Avenue in the 1930s, selling, renting, and servicing industrial machine tools for the manufacturers that powered wartime and postwar Los Angeles. The campus, spanning 1923 to 1947 S. Santa Fe Avenue, was purpose-built for heavy equipment: bow-truss ceilings engineered for overhead crane loads, reinforced concrete floors designed to absorb the vibration of multi-ton milling machines, and 16-foot clear heights that accommodated the largest lathes and presses on the West Coast.

For decades, the Century Machinery campus was a working factory floor. Oliver shapers, Cincinnati Bickford

drill presses, and band saws lined the showrooms. Kids grew up underfoot between the machines. The company's signage was hand-painted across the exterior walls by craftsmen working from ladders.

Today, those same structural bones make the property exceptional for a different kind of work. The bow-truss ceilings that once cleared industrial cranes now frame dramatic studio volumes. The concrete floors that absorbed tonnage anchor modern creative workspaces. And the South Arts District that grew up around the Century Machinery campus has become one of the most sought-after creative corridors in Los Angeles.



## THE CAMPUS

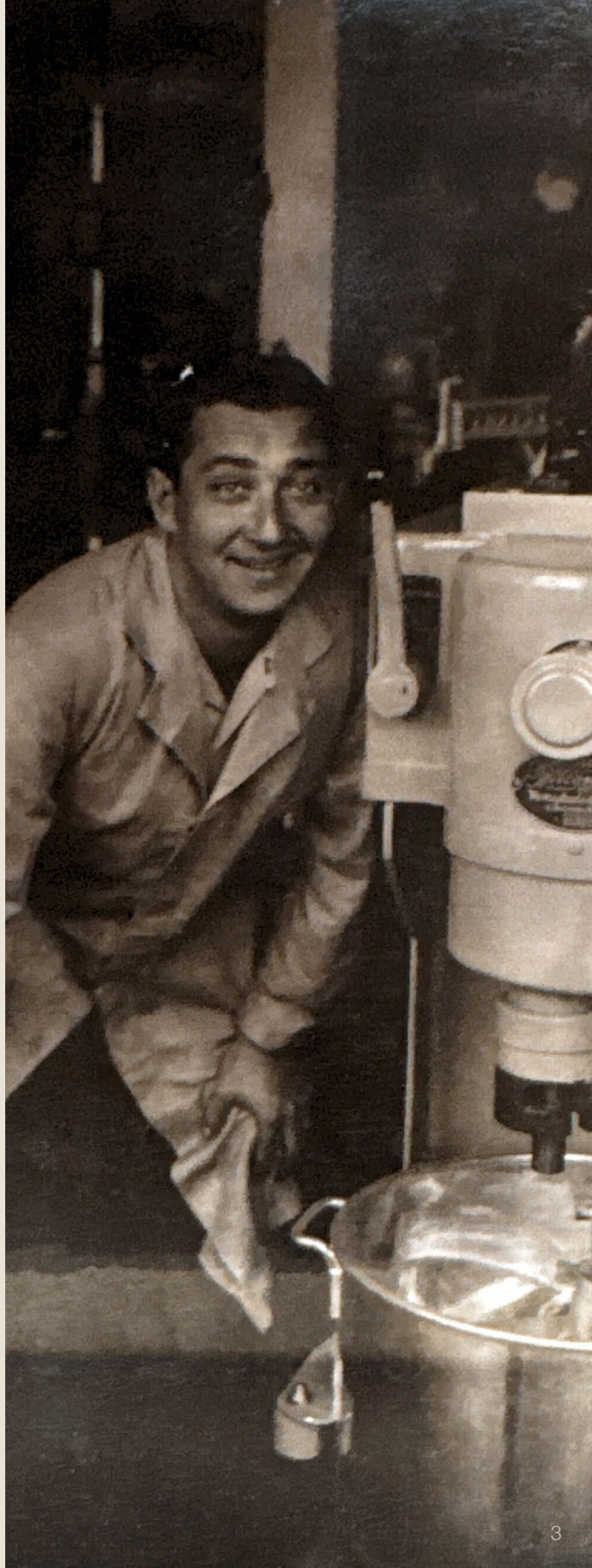
# Built for Makers. Then and Now.

The Century Machinery campus spans multiple addresses along South Santa Fe Avenue, offering a rare combination of creative industrial character and functional infrastructure. Original masonry construction, renovated in 1999, preserves the building's structural integrity while delivering modern systems throughout.

Spaces feature polished concrete floors, skylights, controlled HVAC, bow-truss ceilings, signage, gated yard, roll-up doors, 3-phase power and flexible layouts that accommodate everything from open studio configurations to private office buildouts.

### CURRENT AVAILABILITIES

SPACE	SIZE	RATE
<b>Suite 300</b> 1923 S. Santa Fe	4,400 SF	<b>\$1.82/SF/MO</b>
<b>1947 S. Santa Fe</b>	8,632 SF	<b>\$1.74/SF/MO</b>





## FORMER CENTURY MACHINERY WORKSHOP

The original Century Machinery showroom and service floor. 8,632 SF of bow-truss volume with skylights, 16 ft clear heights, 400A 3-phase power, plus a 1,400 SF private outdoor patio

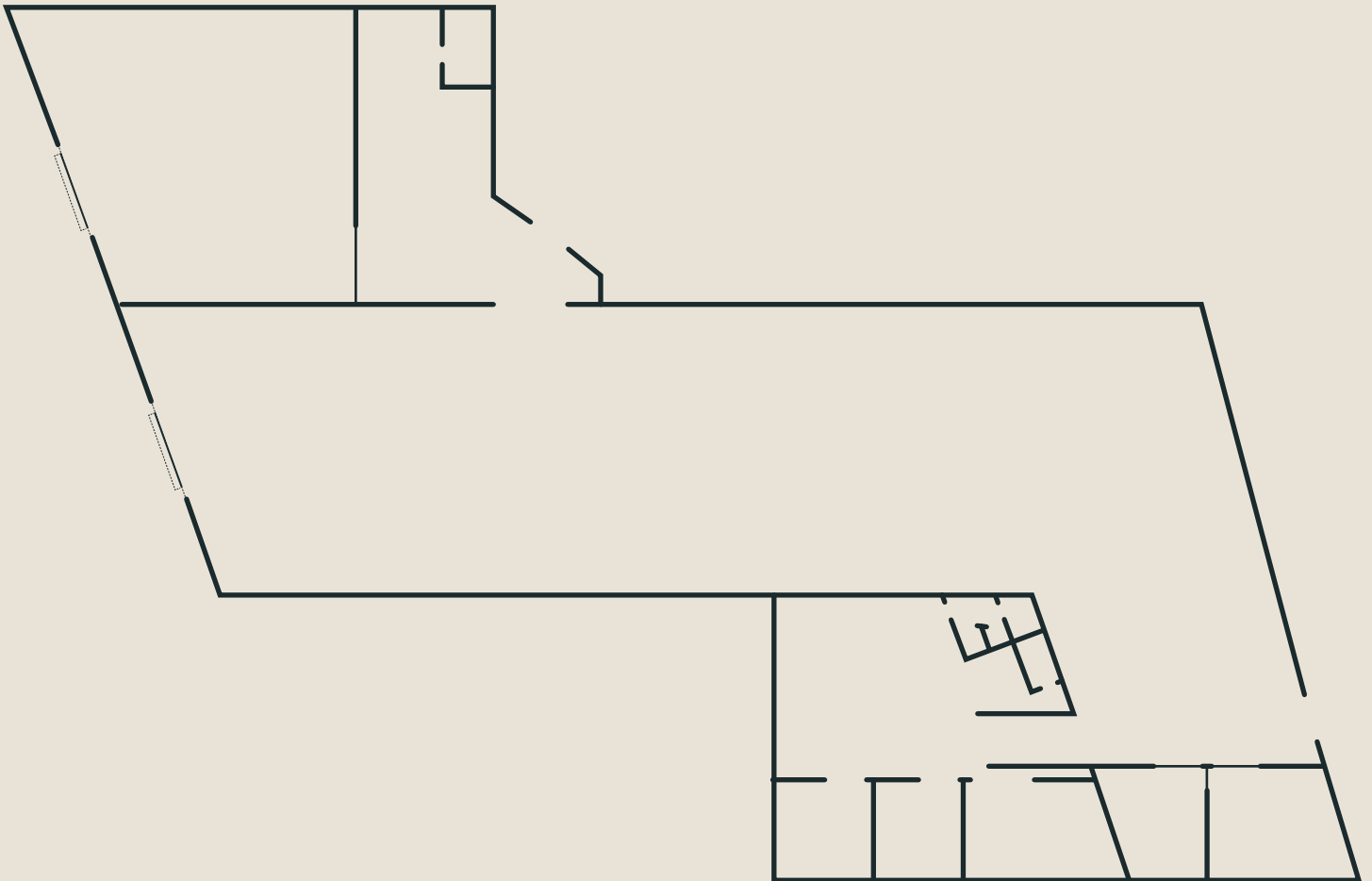
### IDEAL FOR:

- CREATIVE HQ
- BRAND SHOWROOM
- PRODUCTION STUDIO
- CAFÉ CONCEPT

FLOOR PLAN

# 1947 S. SANTA FE AVENUE

8,632 SF

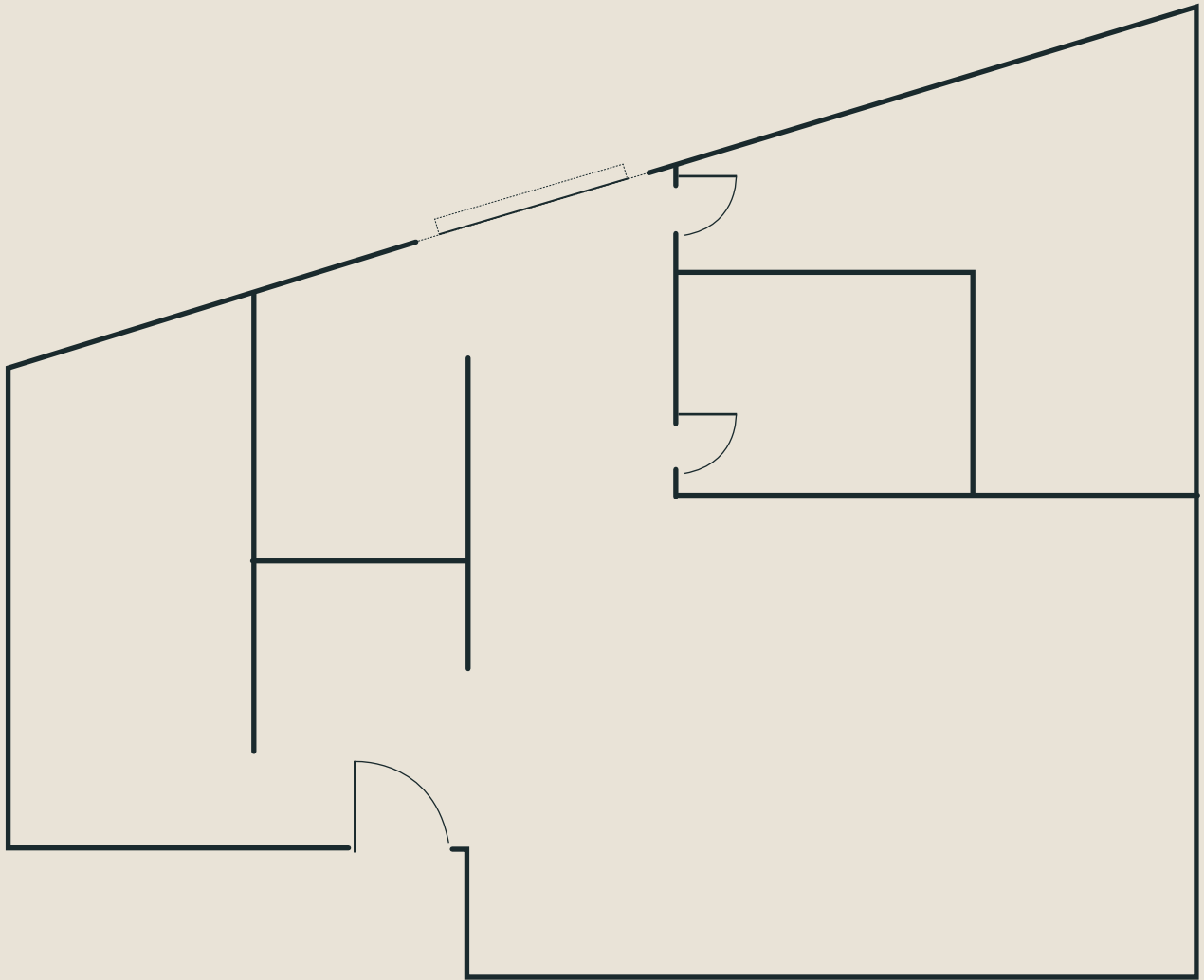




FLOOR PLAN

# Suite 300

1923 S. SANTA FE AVENUE • 4,400 SF



# THE NEIGHBORHOOD

Once the heavy industrial engine of Los Angeles, the South Arts District corridor along Santa Fe Avenue has evolved into the city's premier cultural and creative hub. Today, the manufacturing footprint has given way to Michelin-recognized dining, blue-chip art galleries, and exclusive social clubs. This neighborhood doesn't just offer workspace; it provides a mature, high-end ecosystem attracting global media, tech, and luxury lifestyle brands.



Bestia · 0.8 mi



Kodō · 0.8 mi



Damian · 0.8 mi



Camphor · 1.7 mi



Soho Warehouse · 0.6 mi



Vielmetter Los Angeles · 0.1 mi



Night Gallery · 0.2 mi



Verve Coffee Roasters · 1.3 mi



Warner Music Group · 0.8 mi



Hauser & Wirth · 1.7 mi



Dover Street Market · 1.1 mi



LA Boulders · 1.2 mi

# THE CENTURY AT SANTA FE

1923–1947 South Santa Fe Avenue · Los Angeles, CA 90021

---

**MATT MCLAUGHLIN**  
PRINCIPAL

[matt@foundcre.com](mailto:matt@foundcre.com)

310.694.3979

**DOUG FILLMORE**  
PRINCIPAL

[doug@foundcre.com](mailto:doug@foundcre.com)

310.943.7169

**CECILY JOYCE**  
DIRECTOR

[cecily@foundcre.com](mailto:cecily@foundcre.com)

310.295.0234

Every effort has been made to accurately represent this property and its potential. However, all information and estimates provided are to be used for informational purposes only. They are not to be construed as an exact representation of the property or a prediction of future value. Potential lessees or buyers are advised to conduct a thorough investigation of the property independently. This brochure and the contents herein do not constitute a contract, warranty, or an offer, which can only be made by the property's legal owner. Images and depictions are for illustrative purposes only and may not represent current conditions or conveyance of the property.