

Goodyear Business Park

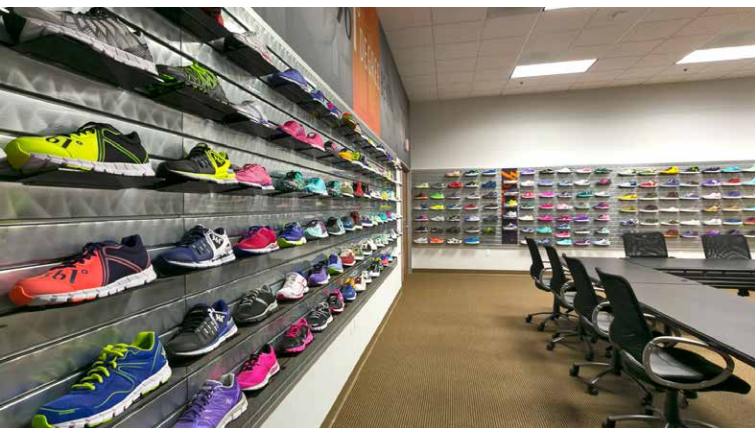
144,185 SF MULTI-TENANT PARK
8 - 18 GOODYEAR, IRVINE, CA



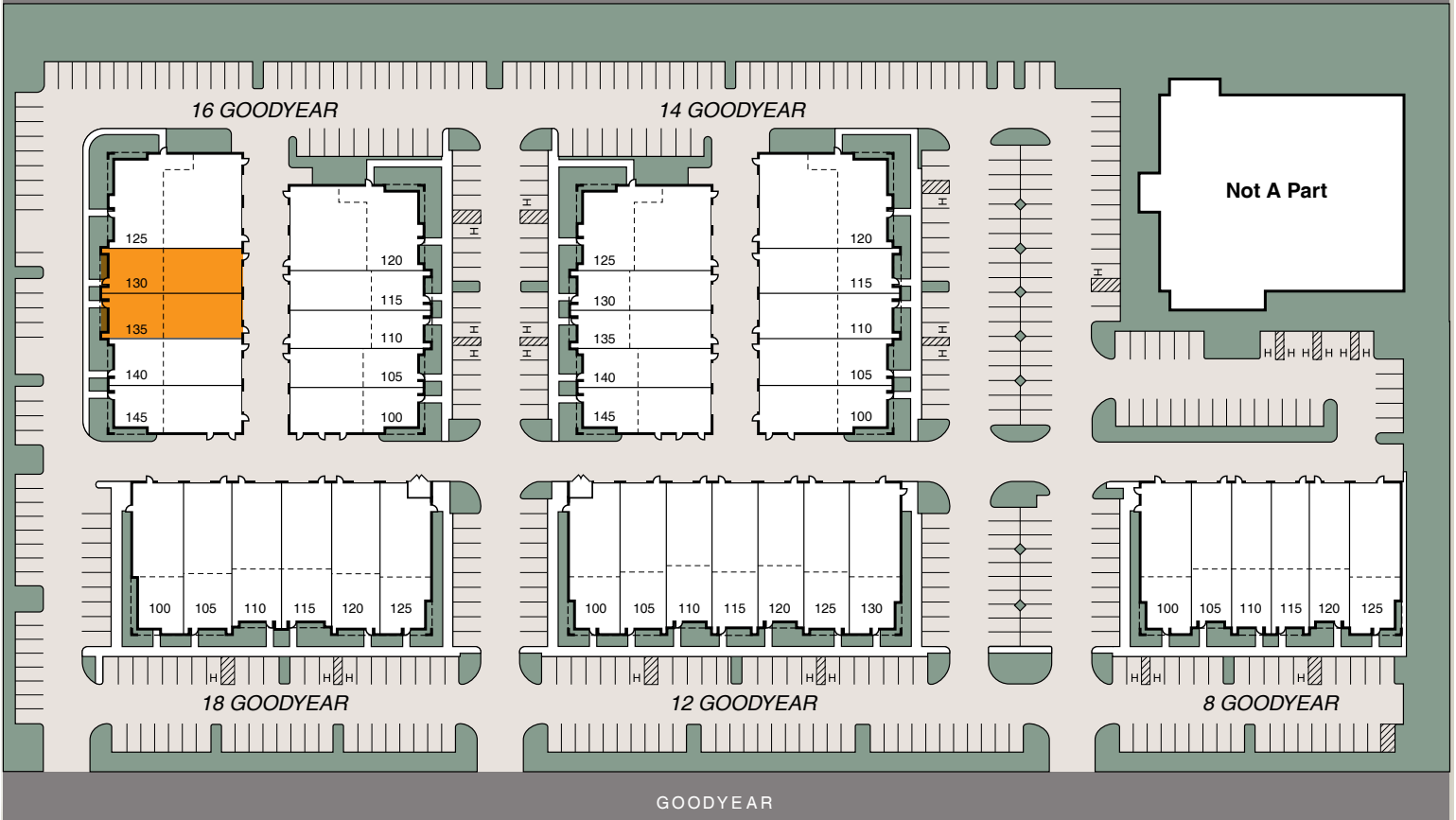
UNIT SIZES
±2,800 to ±15,000 SF

- Turnkey Units Ready for Immediate Occupancy
- Identity / Visibility on Bake Parkway
- Ground Level Loading (12' W x 14' H)
- ± 2.8:1 Parking Ratio
- ±22' Warehouse Clearance
- 200 Amps, 277/480 High Voltage Power
- Fully Sprinklered

PREVIOUS TENANT PHOTOS



BAKE PKWY.



	TOTAL	OFFICE	WAREHOUSE	AVAILABILITY	NOTES	ASKING RATE
16 GOODYEAR						
UNIT 130	±3,422 SF	±2,063 SF	±1,359 SF	Immediate	2 private offices, open office space, 22' clear warehouse, 1 GL *Can combine with Suite 135 for 6,844 SF total	\$1.65 NNN*
UNIT 135	±3,422 SF	±2,063 SF	±1,359 SF	Immediate	4 private offices, 1 large conference room, open office space, 22' clear warehouse, 1 GL *Can combine with Suite 135 for 6,844 SF total	\$1.65 NNN*

Nets 2026: \$0.52 PSF/Mo.



CTH Commercial Real Estate
1572 Indus Street
Newport Beach, CA 92660

Travis Haining DRE #: 01483191
949.689.6321
Travis@CTHcre.com



Lee & Associates - Irvine
9838 Research Drive
Irvine, CA 92618
Corporate ID 01044791

GianCarlo Spinosi DRE #: 02065254
949.412.1728
GSpinosi@Leelrvine.com

DISCLAIMER: The information contained herein has been obtained from the property owner or other third party and is provided to you without verification as to accuracy. We (CTH Commercial Real Estate, its brokers, employees, agents, principals, officers, directors and affiliates) make no warranty or representation regarding the information, property, or transaction. You and your attorneys, advisors and consultants should conduct your own investigation of the property and transaction.



GOODYEAR

BAKE PKWY

JERONIMO RD

ORANGE COUNTY
GREAT PARK

IRVINE
SPECTRUM
CENTER



GOODYEAR BUSINESS PARK is a state of art multi-tenant business park located in the Irvine Spectrum area of Irvine. Irvine Spectrum is well known for its vibrant and thriving community of businesses many of which are involved in cutting-edge high tech, medical, and other scientific endeavors. Goodyear Business Park sets the standard in the area for new office and warehouse space built with upgraded finishes, high ceilings, energy efficient building components, and ample parking, which all seem to take a back seat to the striking architectural design and color schemes of the buildings. The thirty-nine individual units total $\approx 144,185$ square feet of space which is zoned for a Design Professional use. With easy access to the 5, 405, and 133 freeways and located on Goodyear Avenue with visibility to Bake Parkway, Goodyear Business Park is likely to be the home for the collection of the most discerning and innovative tenants as can be found anywhere.



TURNKEY UNITS READY FOR IMMEDIATE OCCUPANCY



$\approx 2.8:1$ PARKING RATIO



IDENTITY / VISIBILITY ON BAKE PARKWAY



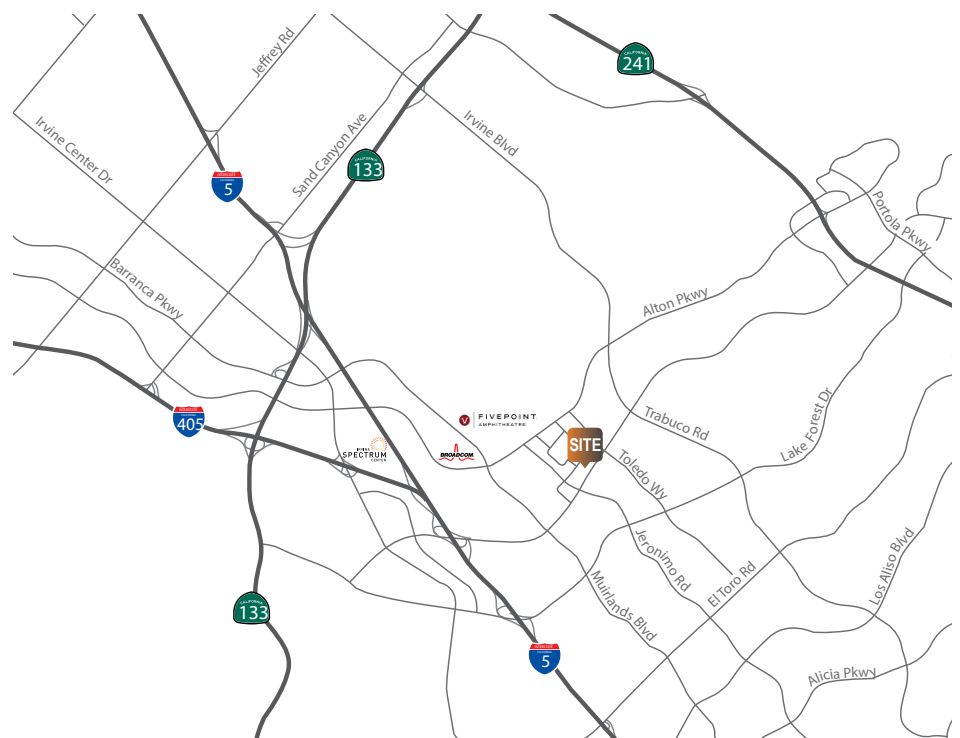
200 AMPS, 277/480 HIGH VOLTAGE POWER



GROUND LEVEL LOADING (12' W x 14' H)

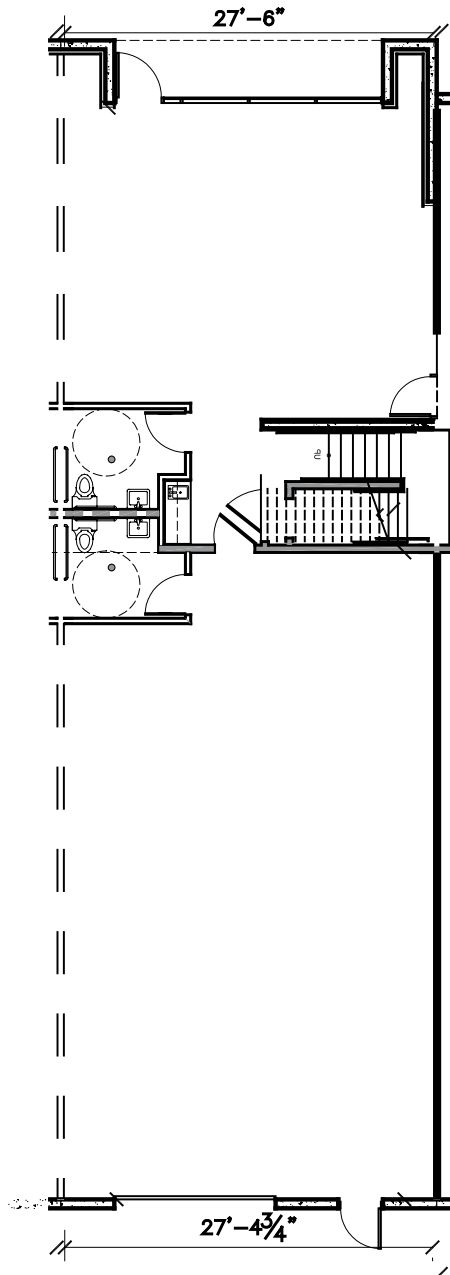


FULLY SPRINKLERED

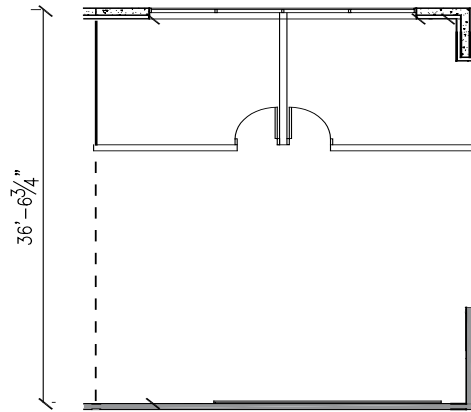


16 GOODYEAR
UNIT 130

FIRST FLOOR



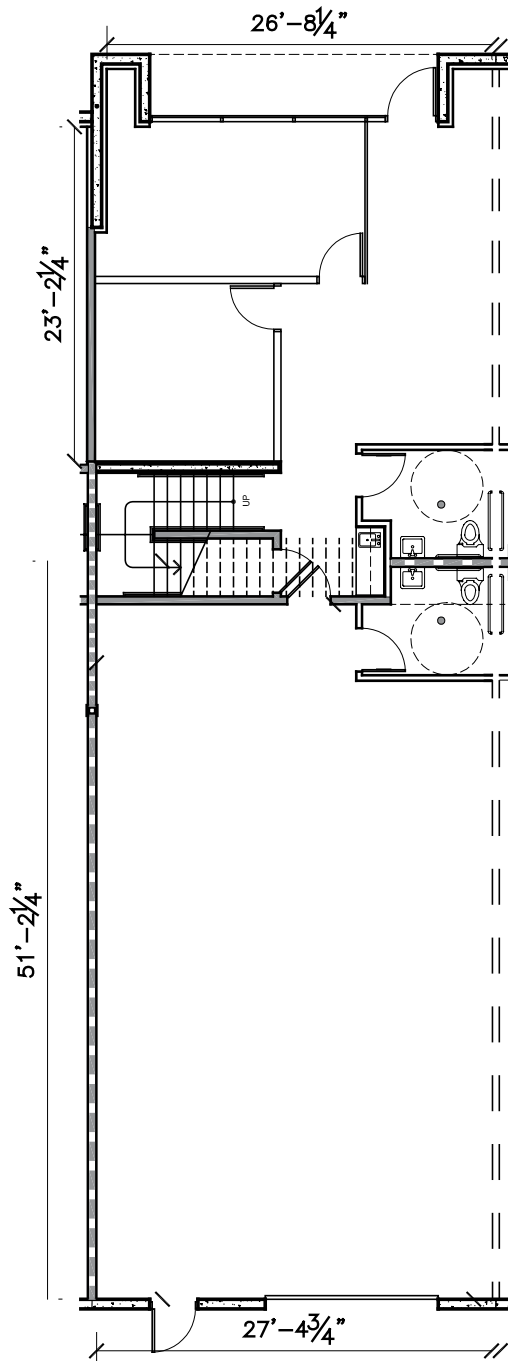
SECOND FLOOR



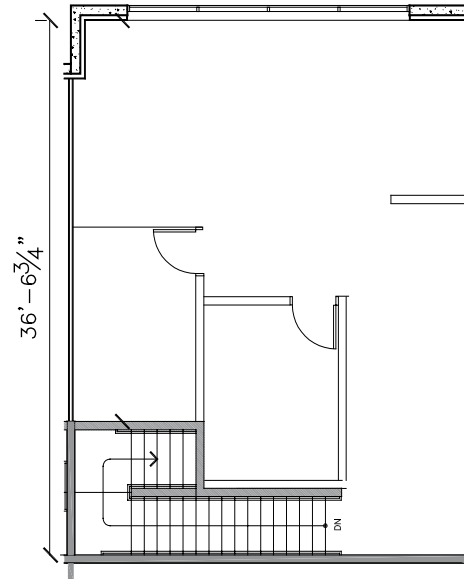
SUITE SF	±3,422
OFFICE SF	±2,063 SF
WAREHOUSE SF	±1,359 SF
AVAILABILITY	Immediate
NOTES	2 private offices, open office space. 22' clear warehouse. 1 GL
ASKING RATE	\$1.65 NNN + Net: \$0.52 PSF/Mo.

16 GOODYEAR
UNIT 135

FIRST FLOOR



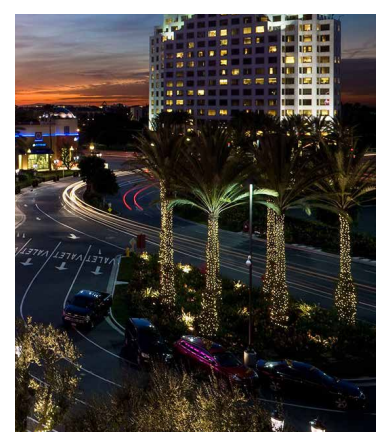
SECOND FLOOR



SUITE SF	±3,422
OFFICE SF	±2,063 SF
WAREHOUSE SF	±1,359 SF
AVAILABILITY	Immediate
NOTES	4 private offices, 1 large conference room, open office space, 22' clear warehouse, 1 GL
ASKING RATE	\$1.65 NNN + Net: \$0.52 PSF/Mo.



ABUNDANT LOCAL AMENITIES



Goodyear Business Park

144,185 SF MULTI-TENANT PARK
8 - 18 GOODYEAR, IRVINE, CA



CTH Commercial Real Estate
1572 Indus Street
Newport Beach, CA 92660

Travis Haining DRE #: 01483191
949.689.6321
Travis@CTHcre.com



Lee & Associates - Irvine
9838 Research Drive
Irvine, CA 92618
Corporate ID 01044791

GianCarlo Spinosi DRE #: 02065254
949.412.1728
GSpinosi@LeelIrvine.com

DISCLAIMER: The information contained herein has been obtained from the property owner or other third party and is provided to you without verification as to accuracy. We (CTH Commercial Real Estate, its brokers, employees, agents, principals, officers, directors and affiliates) make no warranty or representation regarding the information, property, or transaction. You and your attorneys, advisors and consultants should conduct your own investigation of the property and transaction.