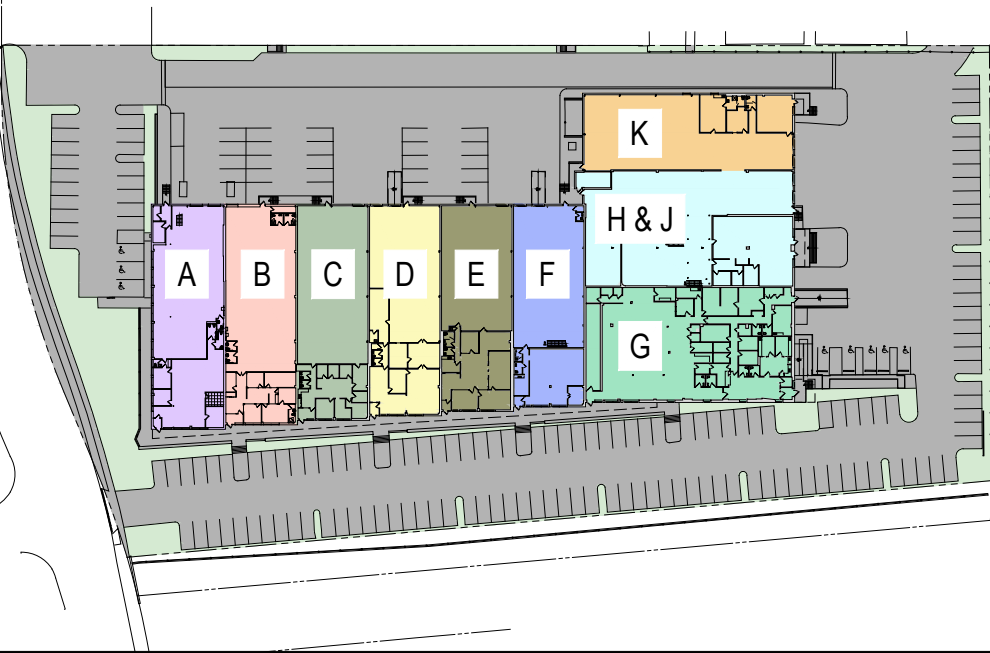
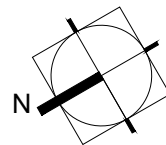
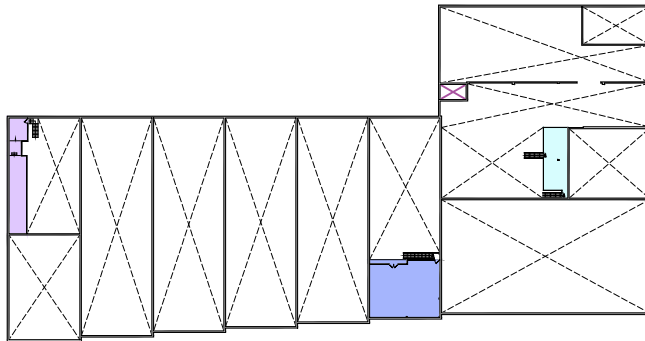


© Buchholz Architects 2020 P\2356 - 100 W Forest Avenue Englewood, NJ (Promo)\PRELIMINARY-A-1 Architectural Site Plan.dwg - 1/24/2020 11:26 AM

WEST FOREST AVE



SITE DATA

ACREAGE:	4.601 ACRES
PAVED AREA:	2.554 ACRES
CAR PARKING:	172 SPACES
HANDICAPPED PARKING:	8 SPACES

BUILDING DATA

OFFICE AREA	37,383 SF
WAREHOUSE AREA	32,838 SF
MEZZANINE AREA	3,704 SF
FIRST TOTAL AREA	70,221 SF
BUILDING TOTAL AREA	73,925 SF
OVERHEAD DOORS	13 OVERHEAD DOORS

TENANT AREA DATA

SUITE	WAREHOUSE DOORS	OFFICE AREA	WAREHOUSE AREA	MEZZANINE AREA	TOTAL AREA
100A	2	2,552 SF	4,789 SF	1,012 SF	8,353 SF
100B	1	1,695 SF	5,359 SF	0 SF	7,054 SF
100C	1	1,800 SF	5,126 SF	0 SF	6,926 SF
100D	2	2,334 SF	4,440 SF	0 SF	6,774 SF
100E	1	2,566 SF	4,043 SF	0 SF	6,609 SF
100F	2	1,900 SF	4,614 SF	1,937	8,451 SF
100G	0	10,133 SF	639 SF	0 SF	10,772 SF
100H & J	2	2,585 SF	8,362 SF	755	11,702 SF
100K	2	1,670 SF	5,614 SF	0 SF	7,284 SF

**Buchholz Architects**

Drawing: ARCHITECTURAL SITE PLAN

**BUCHHOLZ ARCHITECTS**  
ARCHITECTURE • INTERIOR DESIGN

123 Columbia Turnpike Suite 204A  
Florham Park, NJ 07932  
973.746.0100 Phone  
Info@buchholzgroup.com

100 W FOREST AVENUE - BLOCK 2516; LOT 1.03  
ENGLEWOOD, NJ 07631

Date: 24 JAN 2020    Revision #:    Scale: NTS    Drawn By: COREYB    Project Number: 0120-2356

Client Approval

Drawing: **A-1**