

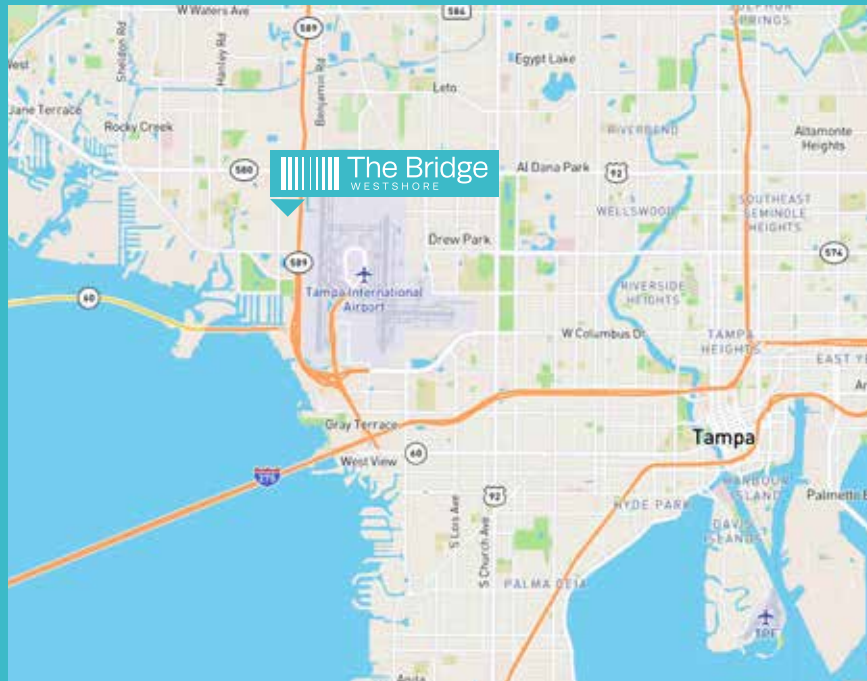


The Bridge

WESTSHORE



PROPERTY SUMMARY



PROPERTY HIGHLIGHTS

- 50,252 SF Available
- 1st floor Medical Office Space Available w/ Direct Exterior Access
- Move-in ready SPEC suites available
- Parking Ratio: 4.00/1,000 SF
- Back-up generator in place
- Brand-new fitness center in place
- Deli option within walking distance
- Recently renovated lobby and exterior landscape
- Proximity to Tampa International Airport, International Plaza, and a variety of restaurant options
- \$1,350,000 of recent capital improvements
- Amenitized outdoor work area equipped with WiFi

WESTSHORE SNAPSHOT

-  4,000 Businesses
-  100,000 Employees
-  13.2 Million SF of Office
-  45 Hotels with 8,000+ Rooms

-  250+ Restaurants
-  350 Stores
-  15,000 Residents & Growing



FLOOR PLANS

Suite 150: 7,032 SF Available

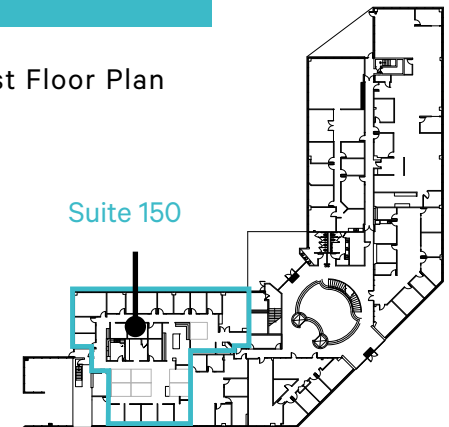


PERFECT MEDICAL OFFICE SPACE USAGE

- Direct access to exterior door
- Ample plumbing throughout the suite
- Medical-approved parking ratio

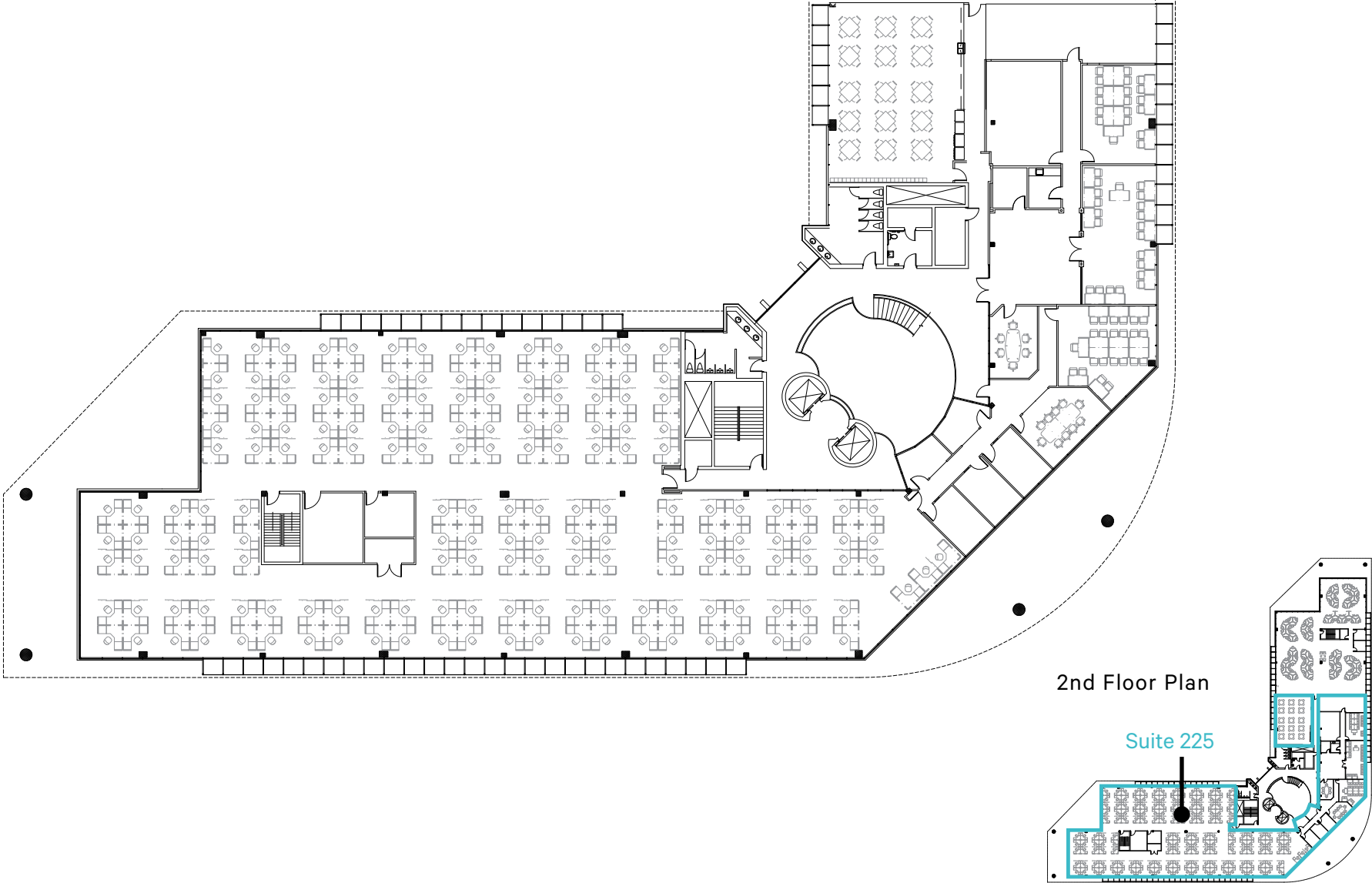
1st Floor Plan

Suite 150



FLOOR PLANS

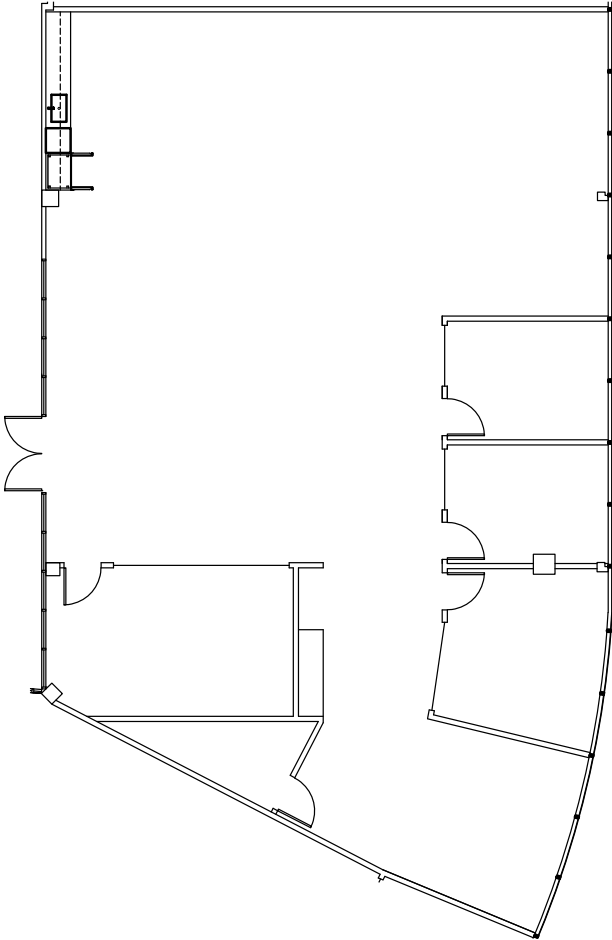
Suite 225: 22,674 SF Available



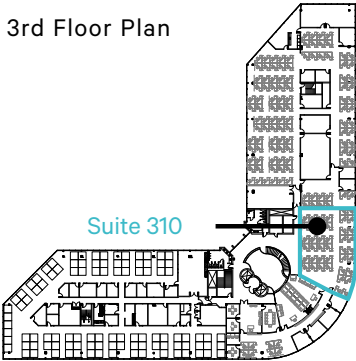
FLOOR PLANS

Suite 310: 3,608 SF Available

Move -in ready spec suite



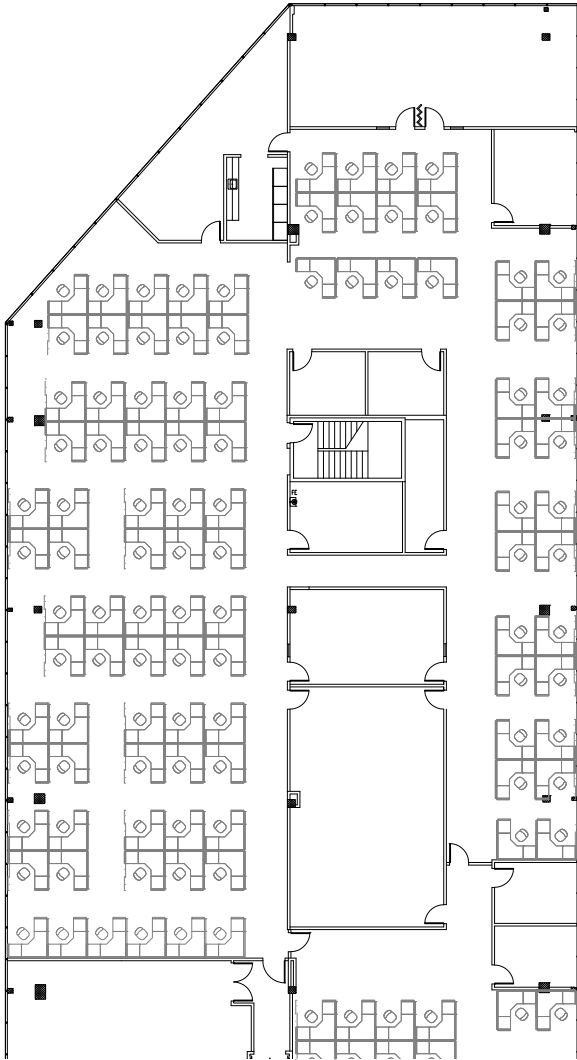
3rd Floor Plan



FLOOR PLANS

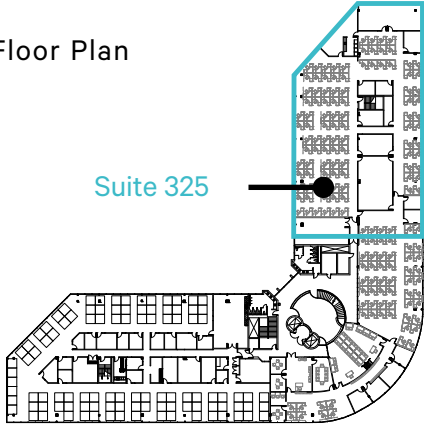
Suite 325: 16,938 SF Available

Divisible



3rd Floor Plan

Suite 325



PROPERTY PHOTOS



CONTACT

Ryan McCurdy

SENIOR VICE PRESIDENT

+1 813 273 8434

ryan.mccurdy@cbre.com

Nicole Grzywacz

TRANSACTION MANAGER

+1 813 273 8445

nicole.grzywacz@cbre.com



© 2026 CBRE, Inc. All rights reserved. This information has been obtained from sources believed reliable, but has not been verified for accuracy or completeness. You should conduct a careful, independent investigation of the property and verify all information. Any reliance on this information is solely at your own risk. CBRE and the CBRE logo are service marks of CBRE, Inc. All other marks displayed on this document are the property of their respective owners. Photos herein are the property of their respective owners. Use of these images without the express written consent of the owner is prohibited.