

FOR LEASE | PROFESSIONAL/MEDICAL OFFICE SPACE

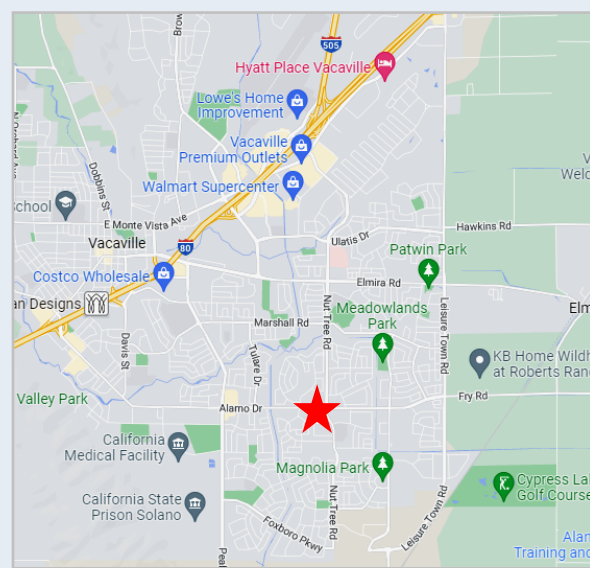
CREEKSIDE OFFICE PARK

3000 ALAMO DR., VACAVILLE, CA 95687



SINGLE STORY PROFESSIONAL OFFICE/MEDICAL SPACE AVAILABLE

- SPACE:** SUITE 207—APPROX. 1,105 SF
- LEASE RATE:** \$1.90 PSF
- BUILDING GLA:** APPROX.. 18,000 R.S.F.
- YEAR BUILT:** 1979
- BUILD-OUT:** PROFESSIONAL OFFICE, MOVE-IN READY;
- AMENITIES:**
- AMPLE ON-SITE PARKING
 - EXCELLENT STREET VISIBILITY
 - CLOSE TO RESTAURANTS, SHOPPING AND BUSINESS SERVICES
 - ATTRACTIVE/TIMELESS ARCHITECTURE, MATURE LANDSCAPING
 - IMMEDIATE ACCESS TO PUBLIC TRANSPORTATION



The information provided herein has been obtained from sources deemed reliable. Summit Properties does not guaranty its accuracy.

CONTACT:

Mary Ann Rollison
maryann@summitprops.com
707-479-0465
DRE #01055428

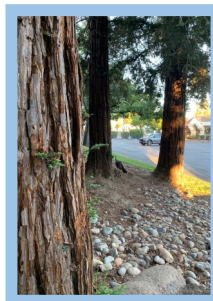
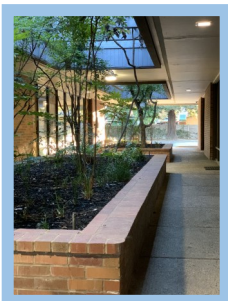
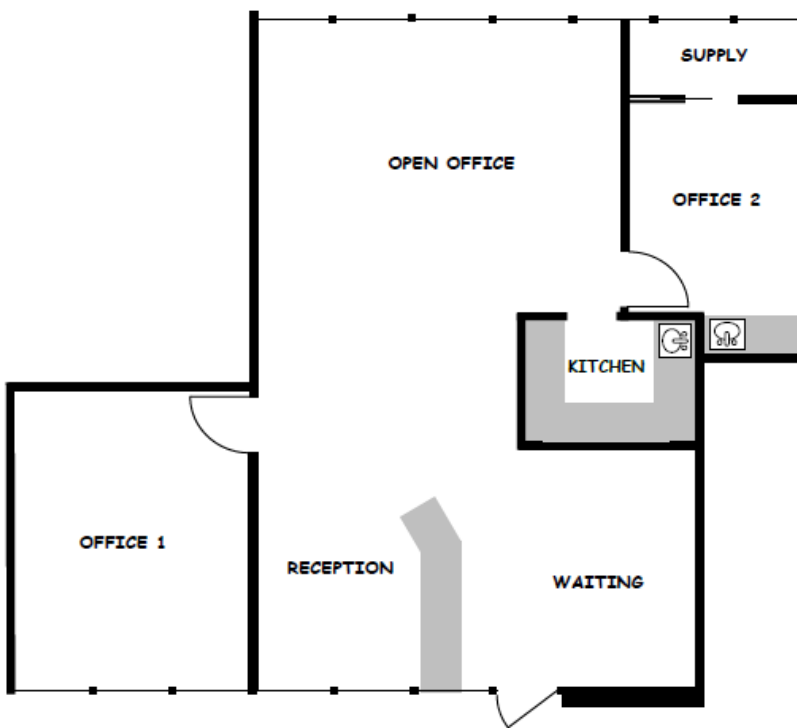
CREEKSIDE OFFICE PARK is a multi-tenant professional professional/medical complex located in Vacaville, California, directly across the street from a 108,800 SF Neighborhood shopping center anchored by Raley's Grocery Store, and 2.4 mi. from Northbay Vacaville Medical Center. Two spaces are available and well suited for professional office and medical office alike.

Vacaville is situated mid-way between San Francisco and Sacramento in the County of Solano ,and is just 15 minutes from the gateway to the Napa-Sonoma Wine Country. Solano County is home to Genentech, Northbay Medical Center, Guittard Chocolate Company, Jelly Belly Company, Anheuser-Busch, Six Flags Discovery Kingdom , Solano Community College and Travis Air Force base Base.

SPACE PLAN

SUITE 207

Common Area Restrooms located adjacent to suite



Mary Ann Rollison
maryann@summitprops.com
707-479-0465
BRE #01055428