



Suburban Properties



1957 Pioneer Road, Unit B-3

5,250 ^{option:} square foot unit with in a 43,325 square foot modern single-story warehouse/manufacturing facility.

Location:

Easy access to the Willow Grove exit of PA Turnpike, I-95, Street Road, and Huntington Pike.

Office:

861 square feet of office space.

Loading:

One (1) tailgate doors.

parking:

Twelve (12) parking spaces.

Toilet facilities:

One (1) bathroom.

Ceiling Height:

16' clear ceiling height.

Power:

200 amp, 120/208 volt, 3 phase electrical service supplied by PECO Energy.

Heat:

Propane gas.

Lighting:

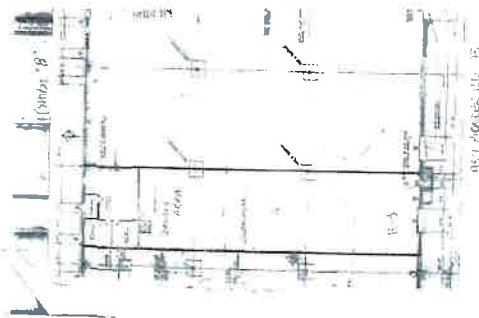
Fluorescence throughout.

Water and Sewer:

Public

5250 SQ.FT.

1957 Pioneer Road - Unit B-3
Huntingdon Valley Industrial Center
Huntingdon Valley, PA



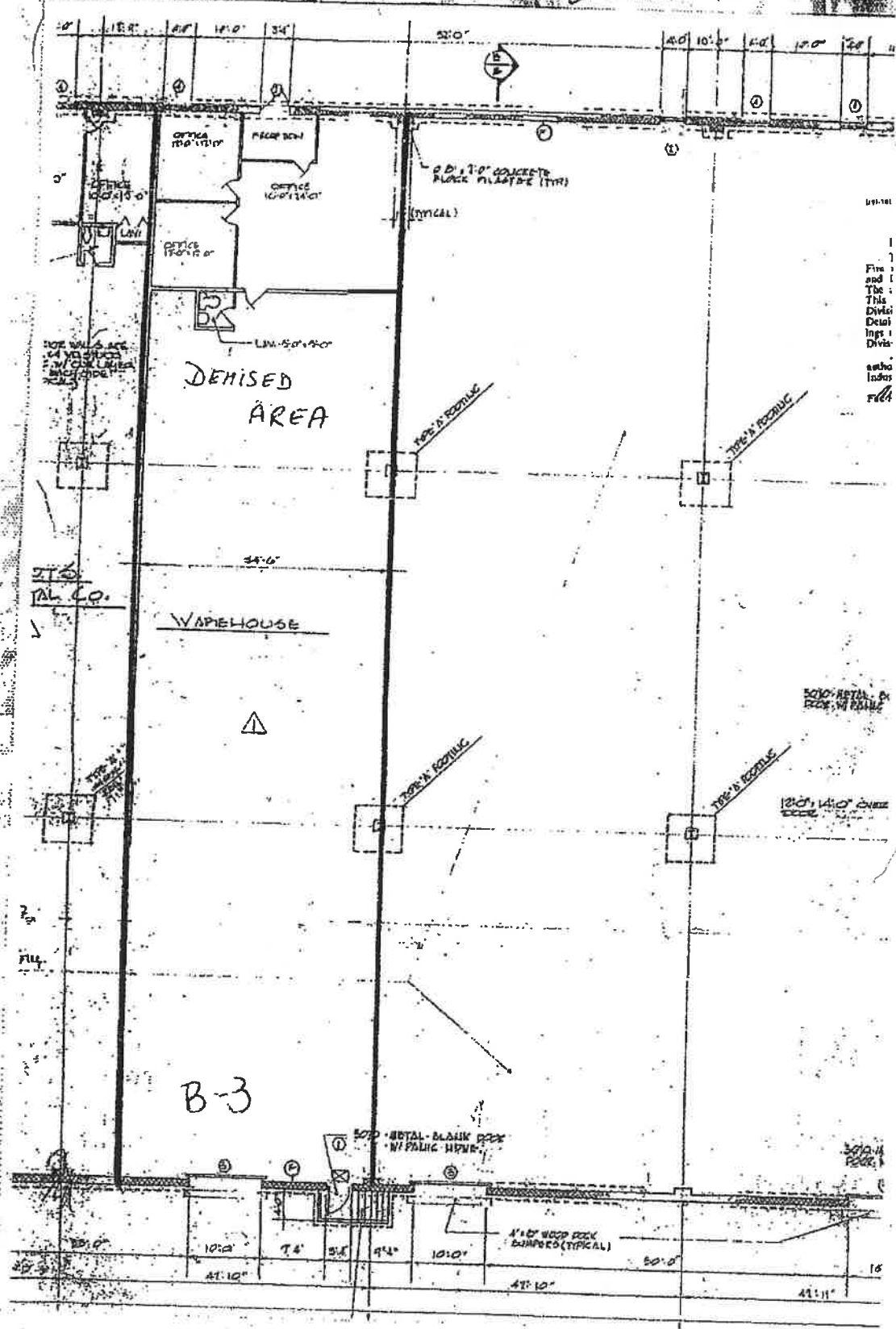
For Further Information regarding the leasing or sale of properties please contact:

John Swanson: 267-249-0619 | 215-954-3342
jswanson@commercialrealestateassociates
swanny5301@gmail.com

5301 Tacony Street - Box 101
Philadelphia, PA 19137

All information is from sources deemed to be reliable, however, no warranty or representation, expresses or implied, is made as to the accuracy thereof and is submitted subject to errors, omissions, changes in price, terms or other conditions, prior lease, sale or withdrawal, without notice.

EXHIBIT "B"



1
Fire
and
The
This
Divi
Det
Ingt
Divi
encl
Indu
rel

1957 PIONEER RD, B