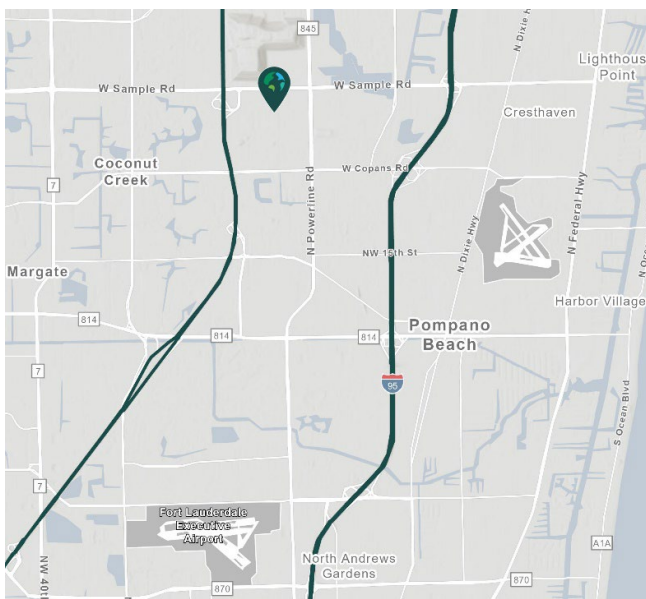


# 21,030 SF

**3151 NW 27<sup>th</sup> Avenue  
Pompano Beach, FL 33069**

Prologis Pompano Park 4



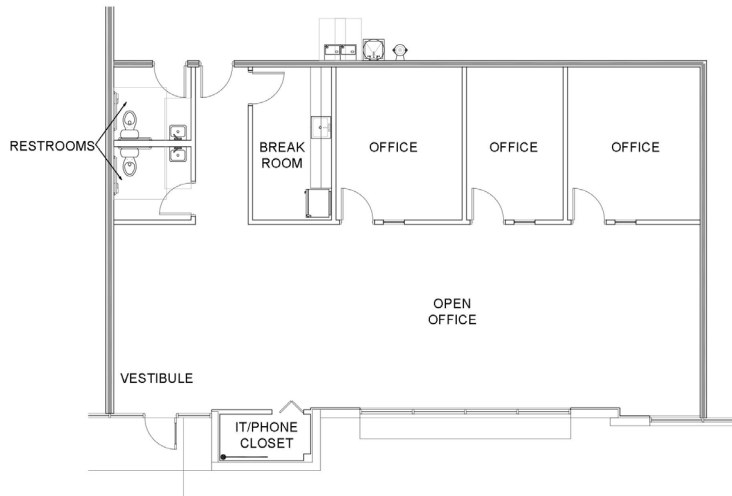
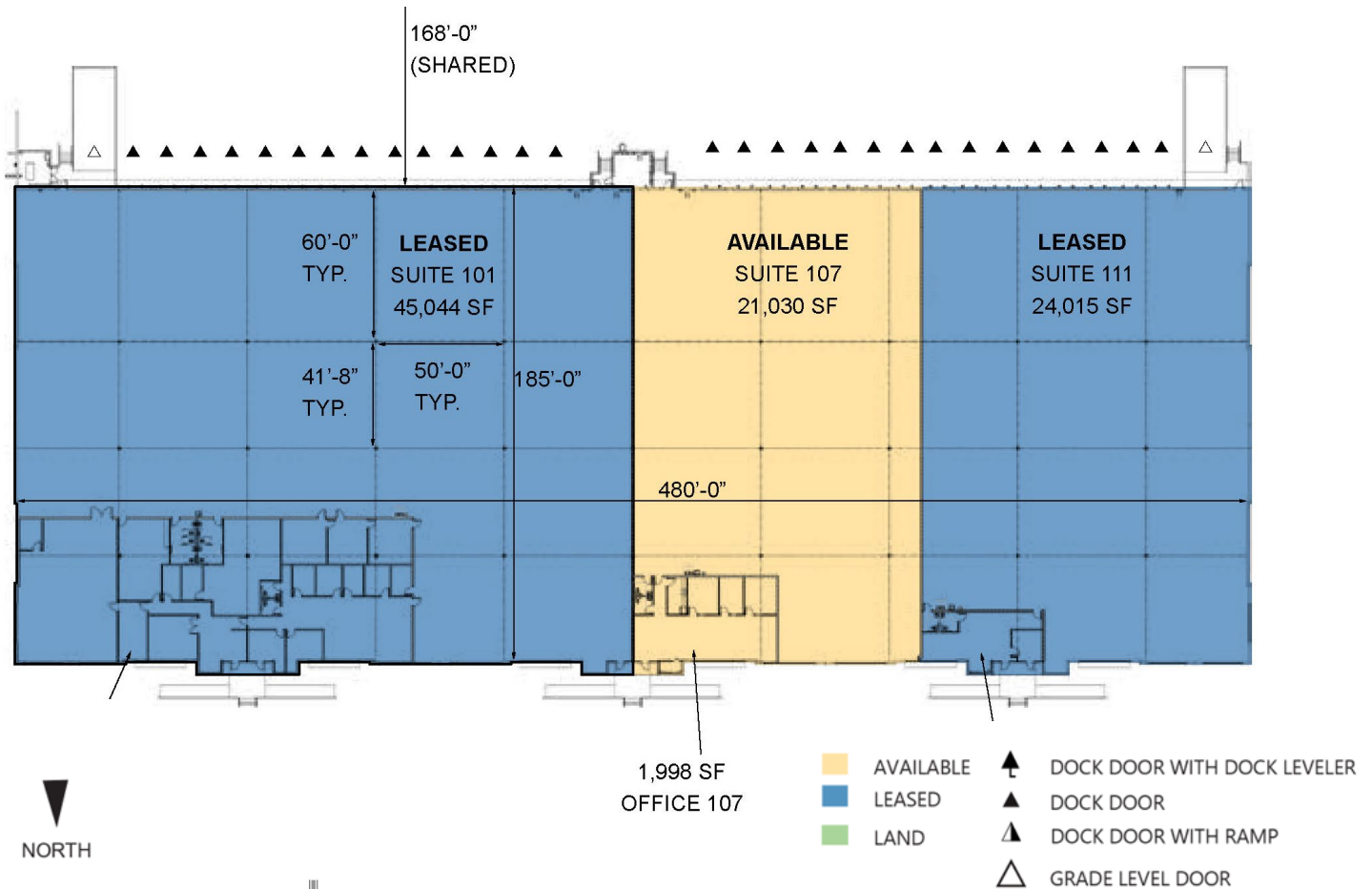
- Location on the east side of NW 27<sup>th</sup> Avenue (Blount Road), between Copans Road and Sample Road
- Strategically located between Interstate 95 and the Florida Turnpike

## Property Features

Available Space	21,030 SF
Office SF	1,998 SF
Clear Height	32' <sup>1</sup>
Column Spacing	41'8" x 50'
Dock Doors	6
Drive-in Doors	1
Car Parking Spaces	180
Sprinkler	ESFR
Lighting	LED Motion Sensor
Available	April 2026



Unlock the full potential of your warehouse with one strategic, single-source partner.



**Cushman & Wakefield**  
**Chris Metzger**

Chris.metzger@cushwake.com  
ph +1 954 415 9155

**Prologis**  
**Ashley McMullen**

amcmullen@prologis.com  
ph +1 954 316 1778  
prologis.com