



# SPACE AVAILABLE FOR LEASE



1490 Tropic Park  
Drive, Sanford, FL

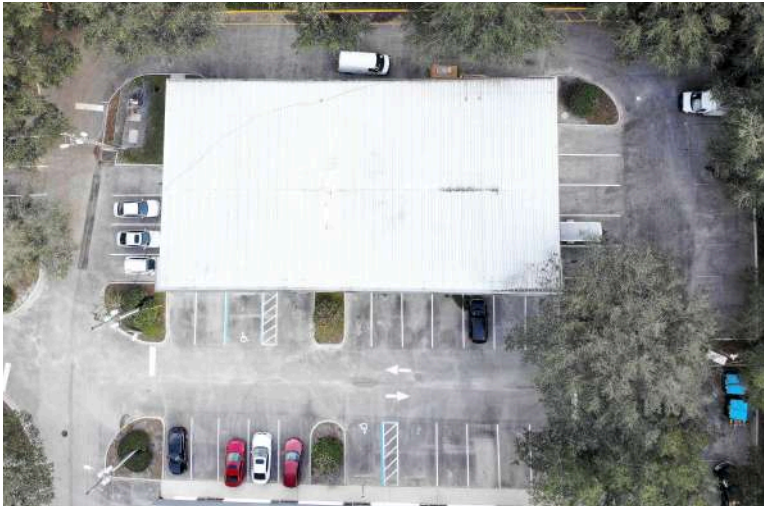
Rates:  
**\$2000/Month**  
Modified Gross



ALPHA  
EQUITY  
REALTY & MANAGEMENT

## PROPERTY HIGHLIGHTS:

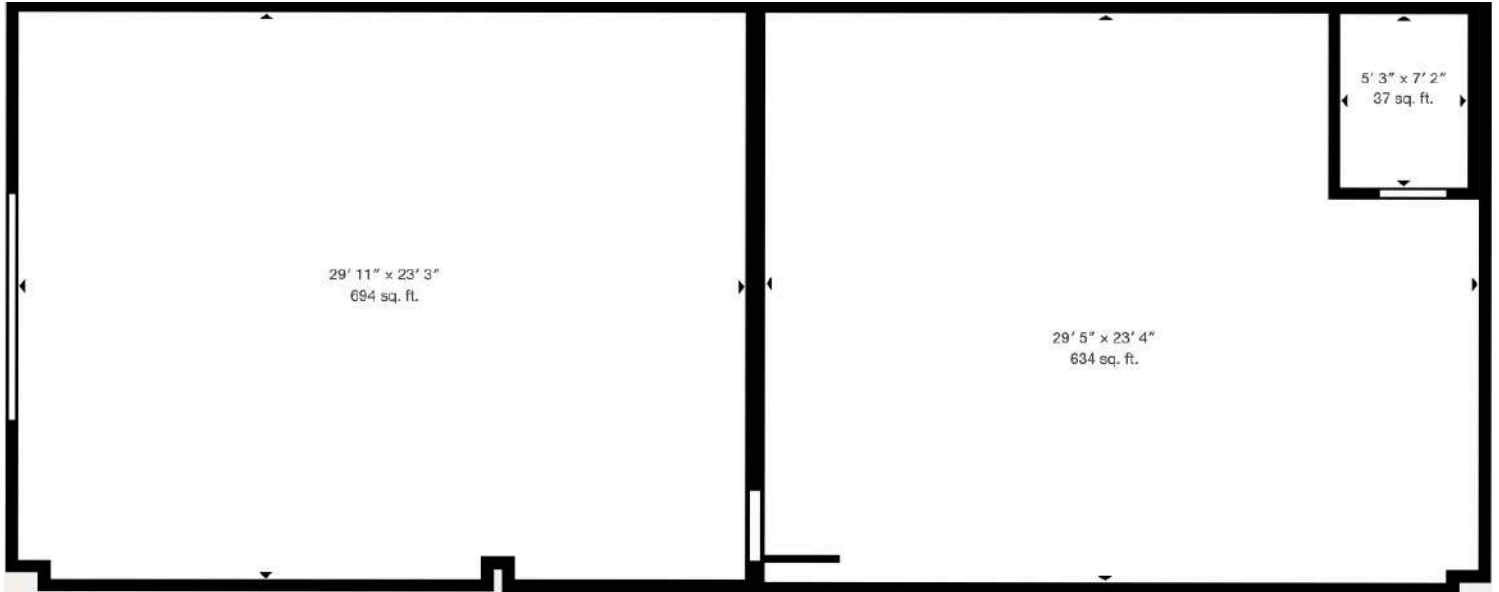
- α ±1,440 SF total space
- α ±700 SF office with HVAC, flexible layout
- α ±700 SF warehouse, clear-span, 15-foot ceiling height
- α 1 grade-level roll-up door
- α Ample surface parking



Tati K: [407-668-8534](tel:407-668-8534)  
Mac Jaffer: [516-554-5775](tel:516-554-5775)  
[leasing@alphaacq.com](mailto:leasing@alphaacq.com)

1490 Tropic Park Drive,  
Sanford, FL

Alpha Equity does not represent or warranty the accuracy of the information contained herein. Such information has been given to Alpha Equity by the owner of the property or obtained from other sources deemed reliable. Alpha Equity has no reason to doubt its accuracy, but does not guarantee it. The reviewer(s) of this document is encouraged to perform their own research for their own purposes to verify the dependability of the information being reviewed. All information should be verified by reviewer(s) prior to purchase or lease. Unless otherwise noted, the property is being offered as-is, where is, with all faults.



[Virtual Tour](#)

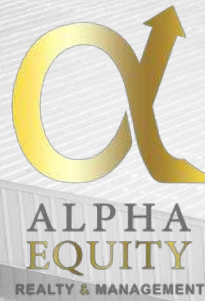
Tati K: [407-668-8534](tel:407-668-8534)  
Mac Jaffer: [516-554-5775](tel:516-554-5775)  
[leasing@alphaacq.com](mailto:leasing@alphaacq.com)

1490 Tropic Park Drive,  
Sanford, FL

Alpha Equity does not represent or warranty the accuracy of the information contained herein. Such information has been given to Alpha Equity by the owner of the property or obtained from other sources deemed reliable. Alpha Equity has no reason to doubt its accuracy, but does not guarantee it. The reviewers(s) of this document is encouraged to perform their own research for their own purposes to verify the dependability of the information being reviewed. All information should be verified by reviewer(s) prior to purchase or lease. Unless otherwise noted, the property is being offered as-is, where is, with all faults.



**1490 Tropic Park Drive, Sanford, FL**



**Alpha Equity Realty & Management**  
**1525 International Parkway,**  
**Unit #4071, Lake Mary FL 32746**  
**[www.recfl.com](http://www.recfl.com)**



**MAC JAFFER**  
**516-554-5775**

**TATI K**  
**407-668-8534**

**[leasing@alphaacq.com](mailto:leasing@alphaacq.com)**