

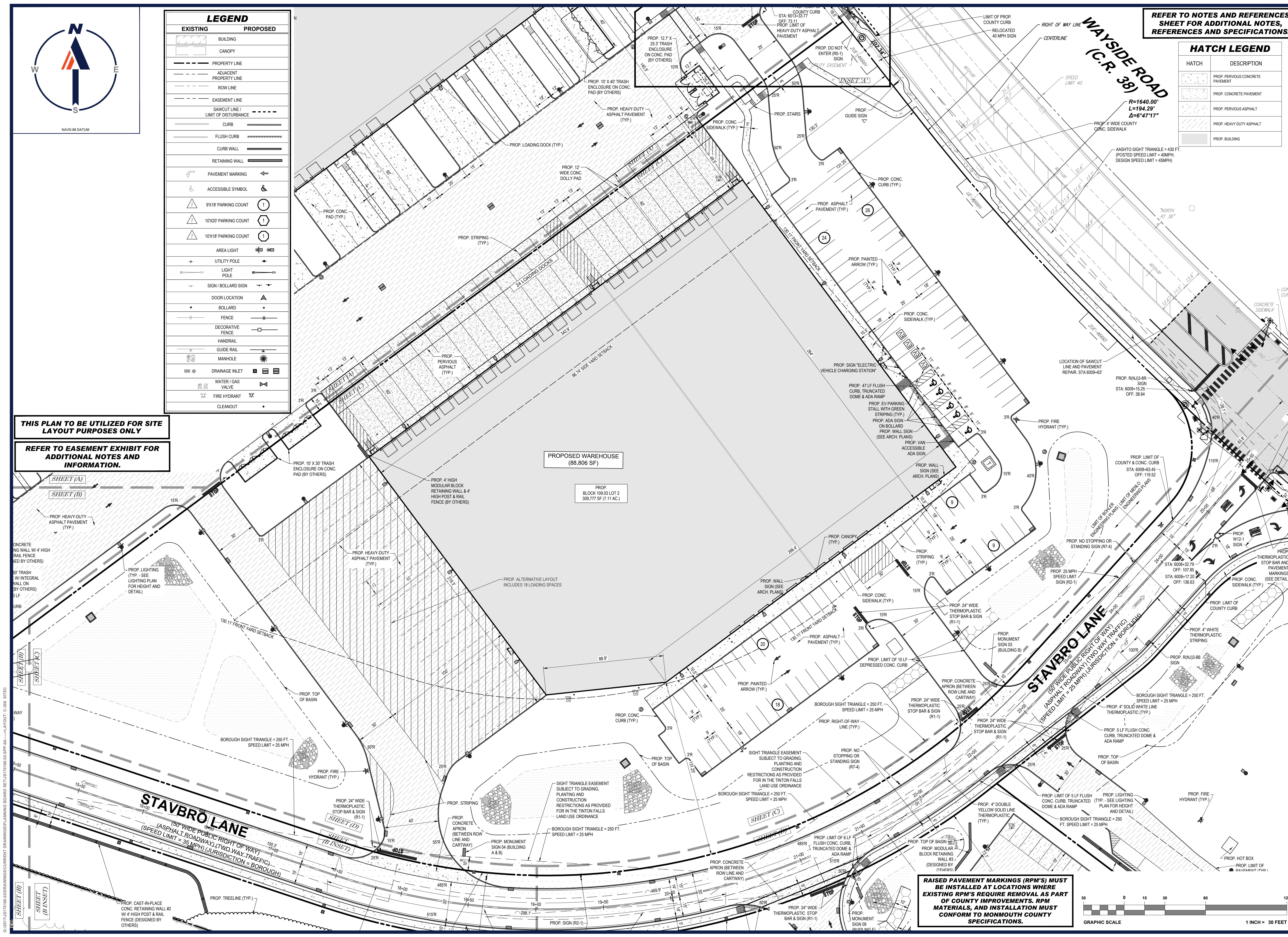


NAVD-88 DATUM

LEGEND	
EXISTING	PROPOSED

THIS PLAN TO BE UTILIZED FOR SITE LAYOUT PURPOSES ONLY

REFER TO EASEMENT EXHIBIT FOR ADDITIONAL NOTES AND INFORMATION.



REFER TO NOTES AND REFERENCES SHEET FOR ADDITIONAL NOTES, REFERENCES AND SPECIFICATIONS.

HATCH LEGEND	
HATCH	DESCRIPTION
	PROP. PEROUS CONCRETE PAVEMENT
	PROP. CONCRETE PAVEMENT
	PROP. PEROUS ASPHALT
	PROP. HEAVY DUTY ASPHALT
	PROP. BUILDING

BOHLER
 SITE CIVIL AND CONSULTING ENGINEERING
 PROGRAM MANAGEMENT
 LANDSCAPE ARCHITECTURE
 SUSTAINABLE DESIGN
 PERMITTING SERVICES
 TRANSPORTATION SERVICES

REVISIONS				
REV	DATE	COMMENT	CHECKED BY	DRAWN BY
1	08/26/2021	REV. PER COMMENT LETTERS	ECW	JFT
2	09/01/2021	REV. PER COMMENT LETTERS	ECW	JFT
3	05/20/2022	REV. PER CLIENT COMMENTS	ECW	JFT
4	06/29/2022	PER COMMENT LETTERS	OU	JWH
5	01/05/2023	REV. PER RESOLUTION OF COMPLIANCE	JWH	OU
6	04/10/2023	REV. PER COUNTY COMMENT LETTER	JWH	OU
7	05/30/2023	REV. PER RESOLUTION COMPLIANCE	JWH	WTK
8	07/14/2023	REV. PER RESOLUTION COMPLIANCE	JWH	WTK

811
 Know what's below.
 Call before you dig.
 NEW JERSEY
 YOU MUST CALL 811 BEFORE ANY EXCAVATION WHETHER IT'S ON PRIVATE OR PUBLIC LAND.
 1-800-272-1000
 www.nj-811.org

FINAL FOR SEWER DESIGN

THIS DRAWING IS INTENDED FOR MUNICIPAL AND/OR AGENCY REVIEW AND APPROVAL. IT IS NOT INTENDING AS A CONSTRUCTION DOCUMENT UNLESS INDICATED OTHERWISE.

PROJECT No.: JS170180.02

CHECKED BY: VLM/ACF

DRAWN BY: JT

DATE: 04/30/2024

CAD ID: JS170180.02-SP-8A

PROJECT:
PRELIMINARY & FINAL MAJOR SUBDIVISION & SITE PLANS
 FOR
STAVOLA REALTY COMPANY

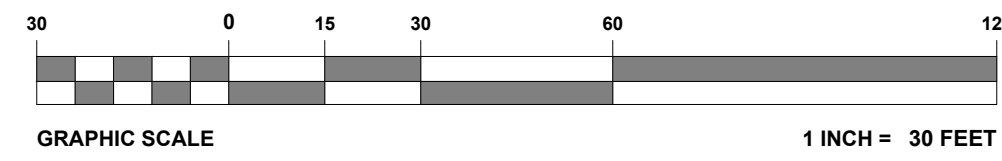
 PROPOSED MIXED-USE DEVELOPMENT
 157 HAMILTON ROAD & 1810 WAYSIDE ROAD
 MAP 42, 43, 46 & 47; BLOCK 109; LOTS 12.01, 13.01, 15, 16, 18-24 & 29.02
 BOROUGH OF TINTON FALLS
 MONMOUTH COUNTY, NEW JERSEY
 IOP ZONE, RET OVERLAY & REHABILITATION/PLANNED DEVELOPMENT OVERLAY

BOHLER
 BOHLER ENGINEERING NJ, LLC
 2430 HWY 34, BLDG B, SUITE 102
 MANASQUAN, NJ 08736
 Phone: (732) 825-8800
 www.BohlerEngineering.com

J. THAON
 PROFESSIONAL ENGINEER
 NEW JERSEY LICENSE NO. 54376

SHEET TITLE:
SITE LAYOUT PLAN (C)
 SHEET NUMBER:
C-306
 PAGE 15 OF 89
 REVISION 8 - 07/14/2023

RAISED PAVEMENT MARKINGS (RPM'S) MUST BE INSTALLED AT LOCATIONS WHERE EXISTING RPM'S REQUIRE REMOVAL AS PART OF COUNTY IMPROVEMENTS. RPM MATERIALS, AND INSTALLATION MUST CONFORM TO MONMOUTH COUNTY SPECIFICATIONS.



C:\031710180\DRAWINGS\CURRENT DRAWINGS\PLANNING BOARD SET\JS170180.02-SP-8A-1-1-24\LAYOUT-C-306.BITC