

# FOR LEASE

## INDUSTRIAL PROPERTY

6599 NW 74<sup>th</sup> Avenue, Miami, FL 33166



### PROPERTY FACTS

 INDUSTRIAL

 4 STREET LEVEL LOADING DOORS

 FOR LEASE

 **\$ 14.50 PER SQFT**

**BEST DEAL IN THE MARKET!**

 3 PHASE POWER AVAILABLE

**+/- 16,420 PSF**

## INDUSTRIAL

### REMARKS:

Industrial warehouse perfect for wholesale, overflow, cargo storage and/or distribution businesses.

### HIGHLIGHTS:

- +/- 15' Clear Ceiling Height
- Overhead Loading Doors
- Brand New Roof and LED Lights



**CORNERSTONE**  
INTERNATIONAL REALTY



INDUSTRIAL



OFFICE



RETAIL



MULTIFAMILY



DEVELOPMENT



HOTEL

*For more information, please contact:*

**DANIEL AVELLANEDA**  
T: 786-804-2425

INFO@CORNERSTONE-IR.COM  
(305) 428-2708  
8200 NW 27TH ST #107, DORAL, FL 33122

# FOR LEASE

6599 NW 74<sup>th</sup> Avenue, Miami, FL 33166



*For more information, please contact:*

**DANIEL AVELLANEDA**  
T: 786-804-2425

INFO@CORNERSTONE-IR.COM  
(305) 428-2708  
8200 NW 27TH ST #107, DORAL, FL 33122



**CORNERSTONE**  
INTERNATIONAL REALTY



INDUSTRIAL



OFFICE



RETAIL



MULTIFAMILY



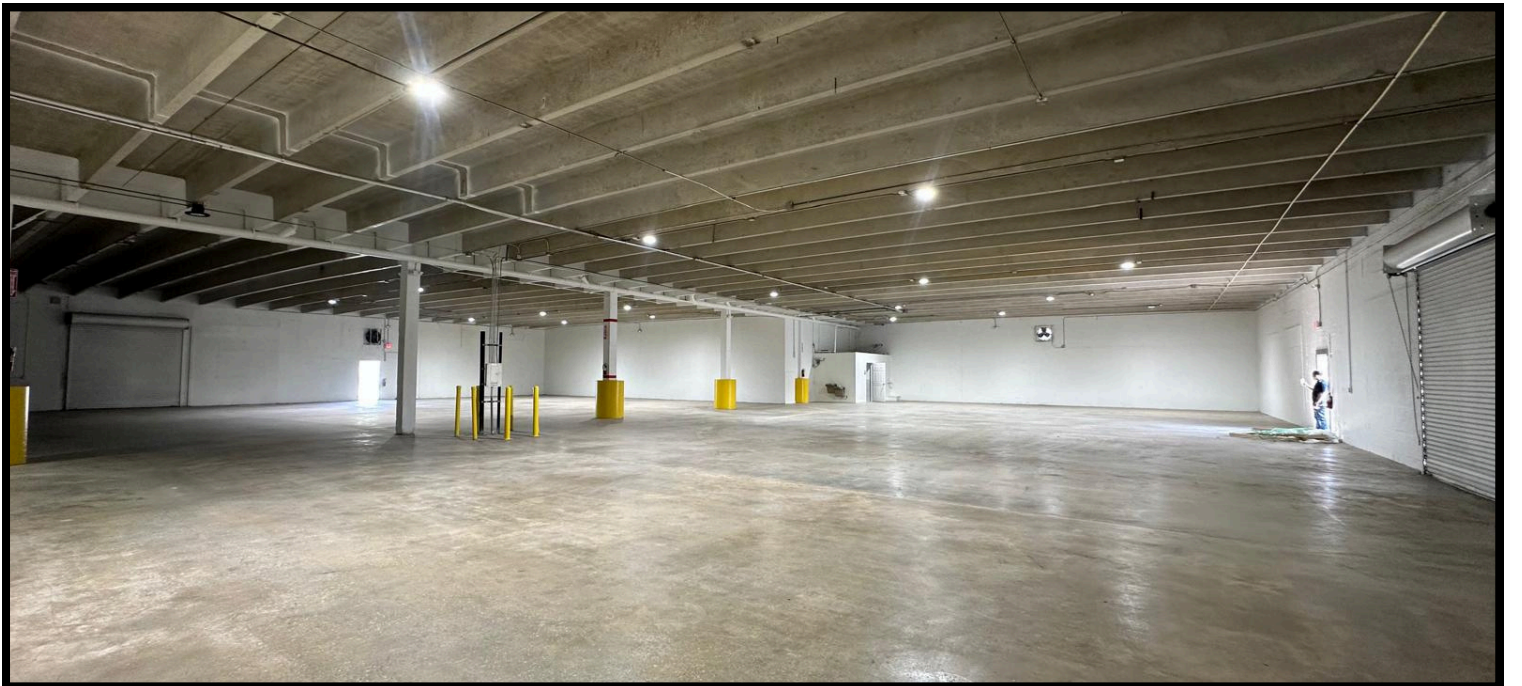
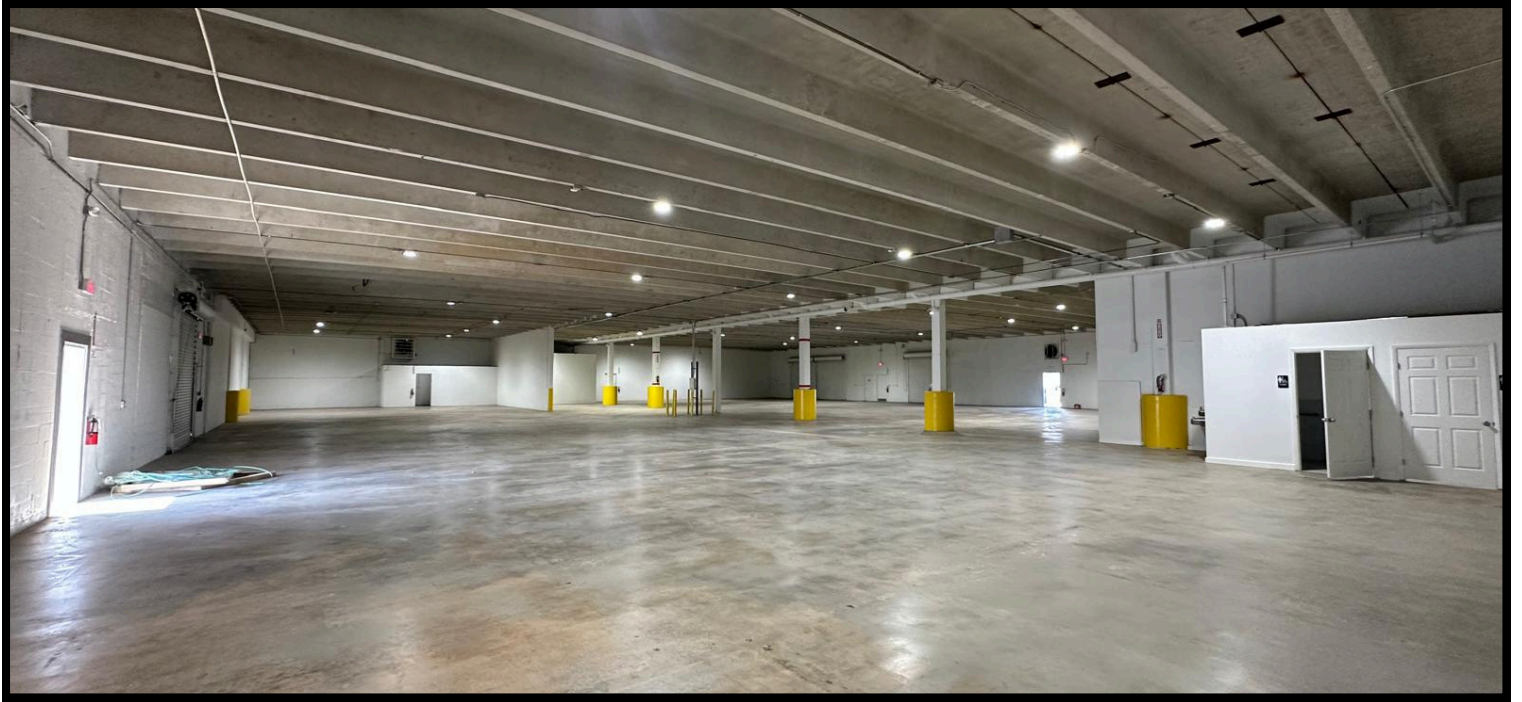
DEVELOPMENT



HOTEL

# FOR LEASE

6599 NW 74<sup>th</sup> Avenue, Miami, FL 33166



*For more information, please contact:*

**DANIEL AVELLANEDA**  
T: 786-804-2425

INFO@CORNERSTONE-IR.COM  
(305) 428-2708  
8200 NW 27TH ST #107, DORAL, FL 33122



**CORNERSTONE**  
INTERNATIONAL REALTY



INDUSTRIAL



OFFICE



RETAIL



MULTIFAMILY



DEVELOPMENT

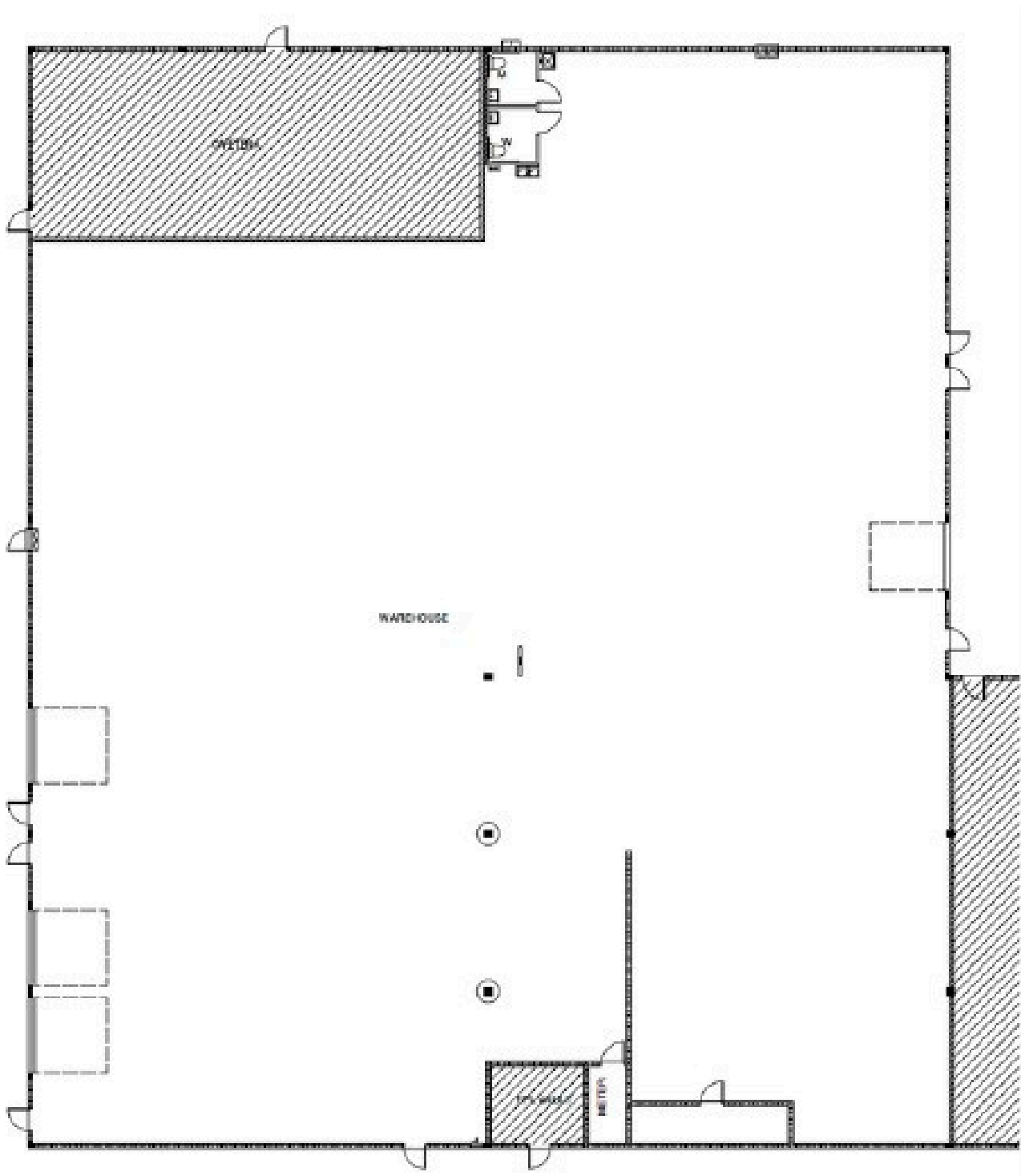


HOTEL

# FOR LEASE

6599 NW 74<sup>th</sup> Avenue, Miami, FL 33166

## Floor Plan



*For more information, please contact:*

**DANIEL AVELLANEDA**  
T: 786-804-2425

INFO@CORNERSTONE-IR.COM  
(305) 428-2708  
8200 NW 27TH ST #107, DORAL, FL 33122



**CORNERSTONE**  
INTERNATIONAL REALTY



INDUSTRIAL



OFFICE



RETAIL



MULTIFAMILY



DEVELOPMENT



HOTEL