

145-49 226th Street

Jamaica, Queens, New York 11413

18,800 SF Warehouse | 3,300 SF Office | JFK Aircargo Submarket



145-49 226th Street
Jamaica, Queens, New York

For Lease

Property Highlights

- + Office Space: 3,300 SF
- + Warehouse Space: 18,800 SF
- + Total Space: 22,100 SF
- + Ceiling Height: 14'
- + Loading: 6 loading docks
- + Drive-Ins: 2 drive-in doors
- + Asking: Available upon request



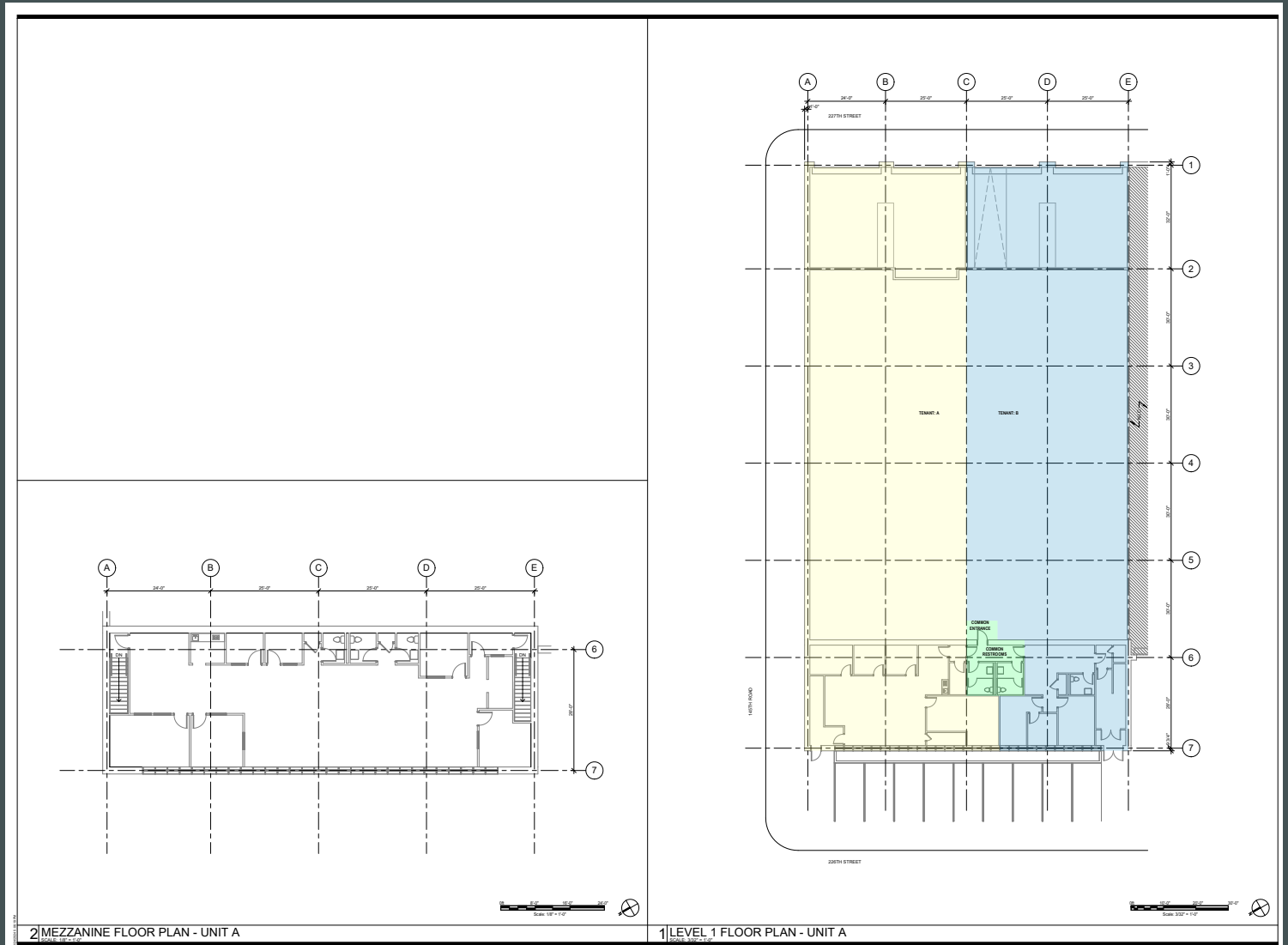
Contact Us

Frank Liggiio
+1 631 370 6039
frank.liggiio@cbre.com

Taylor Carlin
+1 631 370 6054
taylor.carlin@cbre.com

CBRE

Floor Plan



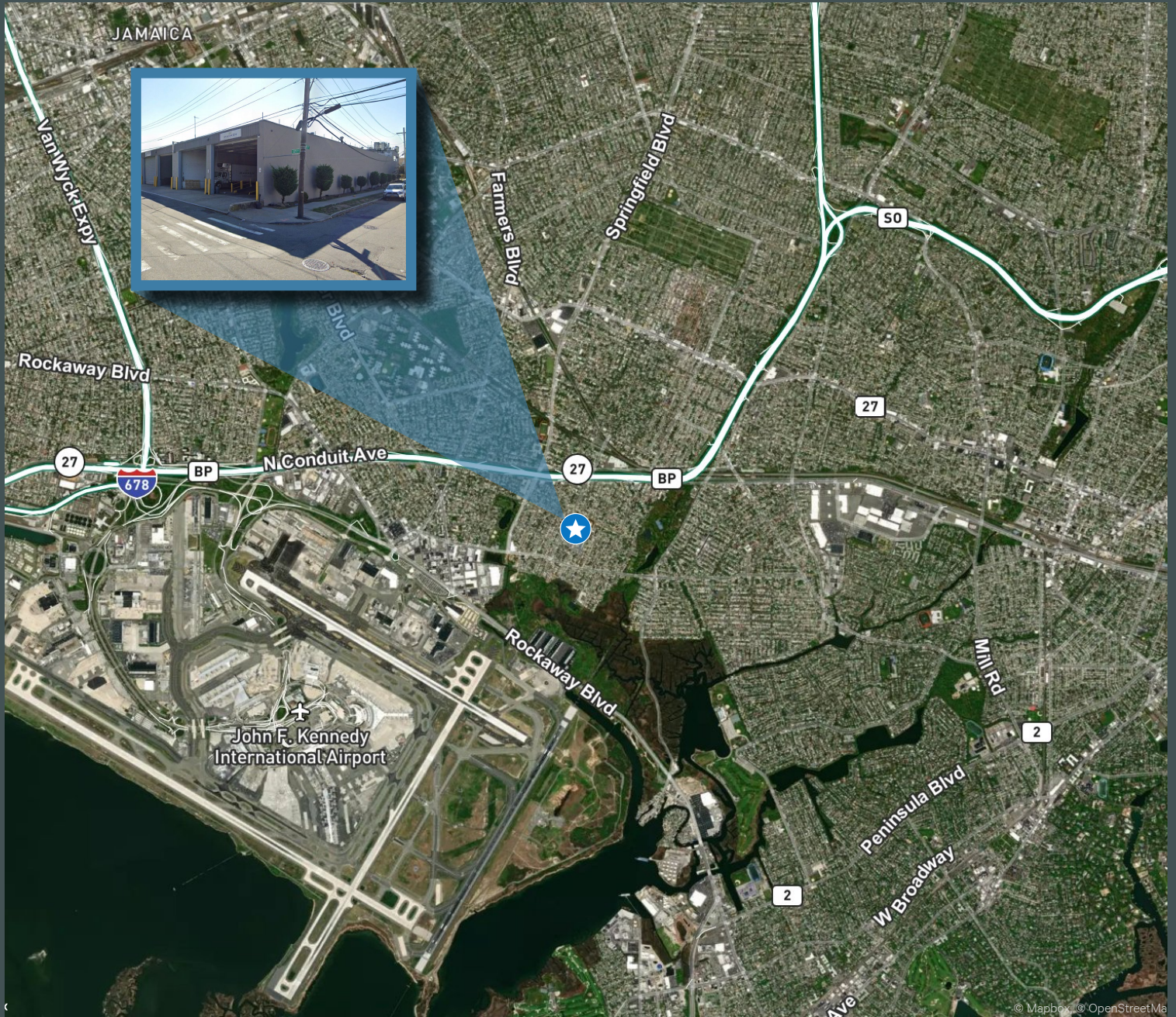
Contact Us

Frank Liggiio
+1 631 370 6039
frank.liggiio@cbre.com

Taylor Carlin
+1 631 370 6054
taylor.carlin@cbre.com

145-49 226th Street
Jamaica, Queens, New York

For Lease



Contact Us

Frank Liggió
+1 631 370 6039
frank.liggió@cbre.com

Taylor Carlin
+1 631 370 6054
taylor.carlin@cbre.com

© 2025 CBRE, Inc. All rights reserved. This information has been obtained from sources believed reliable, but has not been verified for accuracy or completeness. You should conduct a careful, independent investigation of the property and verify all information. Any reliance on this information is solely at your own risk. CBRE and the CBRE logo are service marks of CBRE, Inc. All other marks displayed on this document are the property of their respective owners, and the use of such logos does not imply any affiliation with or endorsement of CBRE. Photos herein are the property of their respective owners. Use of these images without the express written consent of the owner is prohibited.