

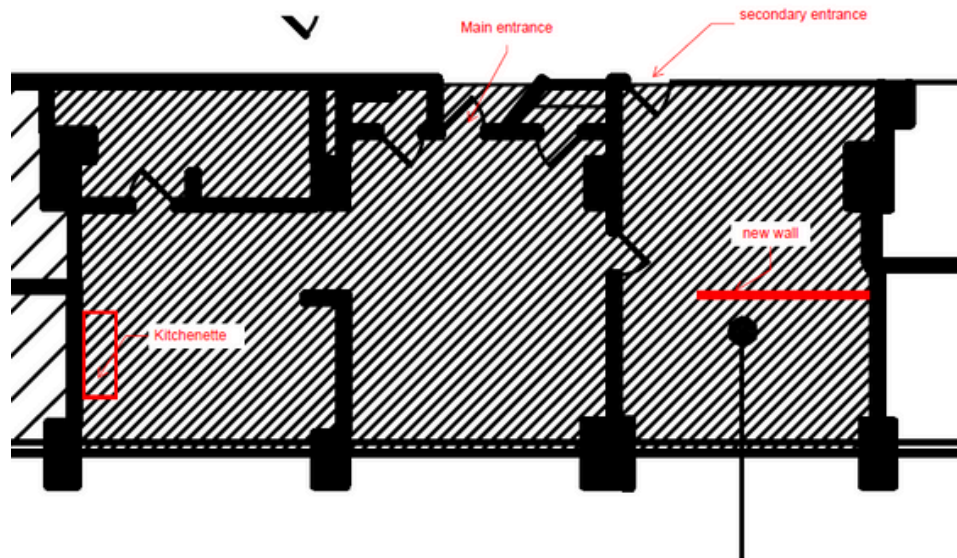
1819 JOHN F. KENNEDY BLVD. PHILA. PA 19103

Office Sublease Available  
Suite 424  
1,593 SF



Aggressive \$21/SF  
+ Electric Rate

Term through  
8/31/2030



- Conveniently located in the heart of Center City
- Upgraded retail amenities
- Enclosed parking spaces
- Adjacent to the Comcast Technology Center & Suburban Station
- 40,000SF City Fitness located in the building
- Dog Friendly