



124-126 The Grove, Stratford, London

£60,000 pa



124-126 The Grove, Stratford

124 The Grove, London

Rare opportunity to acquire highly desirable 989 sq. ft retail unit in the heart of Stratford.

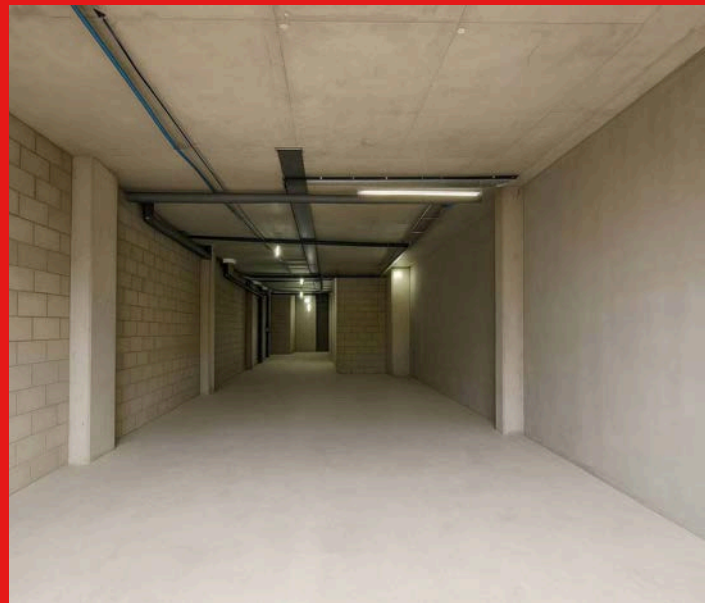
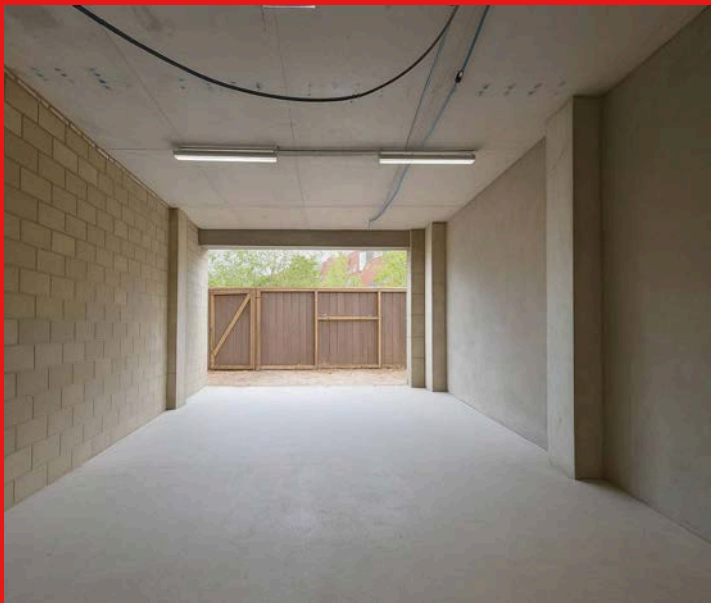
Excellent store frontage, high footfall, near transport links.

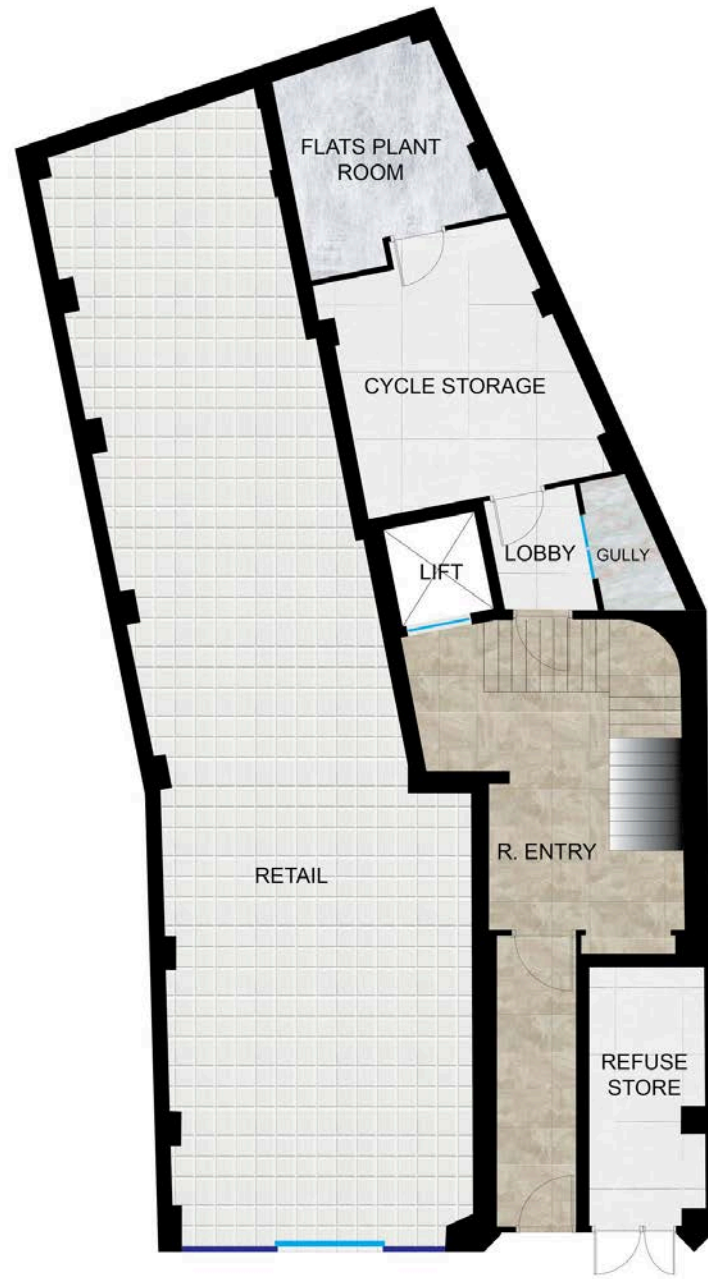
Ground floor, shell condition, suitable for variety of trades.

Rent: £60,000 p.a.

Council Tax band: TBD

- Shell Condition
- High Footfall Location
- New Lease





GROUND FLOOR PLAN



City & Urban Commercial

City & Urban Shoreditch Ltd, 25 Phipp Street - EC2A 4NP

02077293344 • shoreditch@cityandurban.com •