

603 HERON DRIVE

SWEDESBORO, NJ 08085



REPRESENTED BY
THE FLYNN COMPANY

DAVID RICCI
DRICCI@FLYNNCO.COM
215-561-6565 X 154

BRANDO CASALICCHIO
BCASALICCHIO@FLYNNCO.COM
215-561-6565 X 153



AVAILABLE FOR LEASE
UNIT 6 | 5,239 SF TOTAL

PROPERTY HIGHLIGHTS

- **Total Building Size:** 45,527 SF
- **Available:** 5,239 SF
- **Office Space:** 1,970 SF
- **Loading:** 1 tailgate, 1 drive-in
- **Ceiling height:** 17' Clear
- **Parking:** 3.28/1,000 SF
- **Electric:** 200 Amps, 120-208v
- **Zoning:** LI (Light Industrial)

- **Location:**
 - Pureland Industrial Complex, with 16.6M SF of industrial space
 - Immediate access to I-295 + Route 322
 - 3 miles from Commodore Barry Bridge

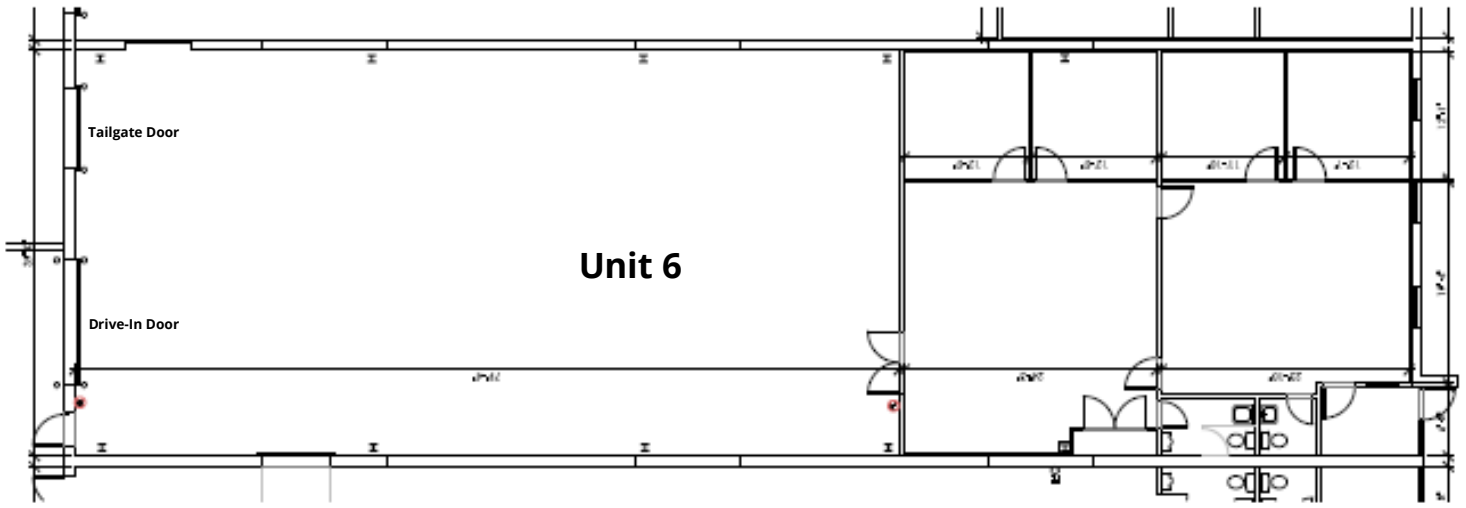
DAYTIME EMPLOYMENT

RADIUS	2 MILES		5 MILES		10 MILES	
	Employees	Businesses	Employees	Businesses	Employees	Businesses
Service- Producing Industries	4,376	351	9,693	1,060	118,651	14,199
Goods- Producing Industries	2,015	82	3,934	218	21,431	1,748
Total	6,391	433	13,627	1,278	140,082	15,947

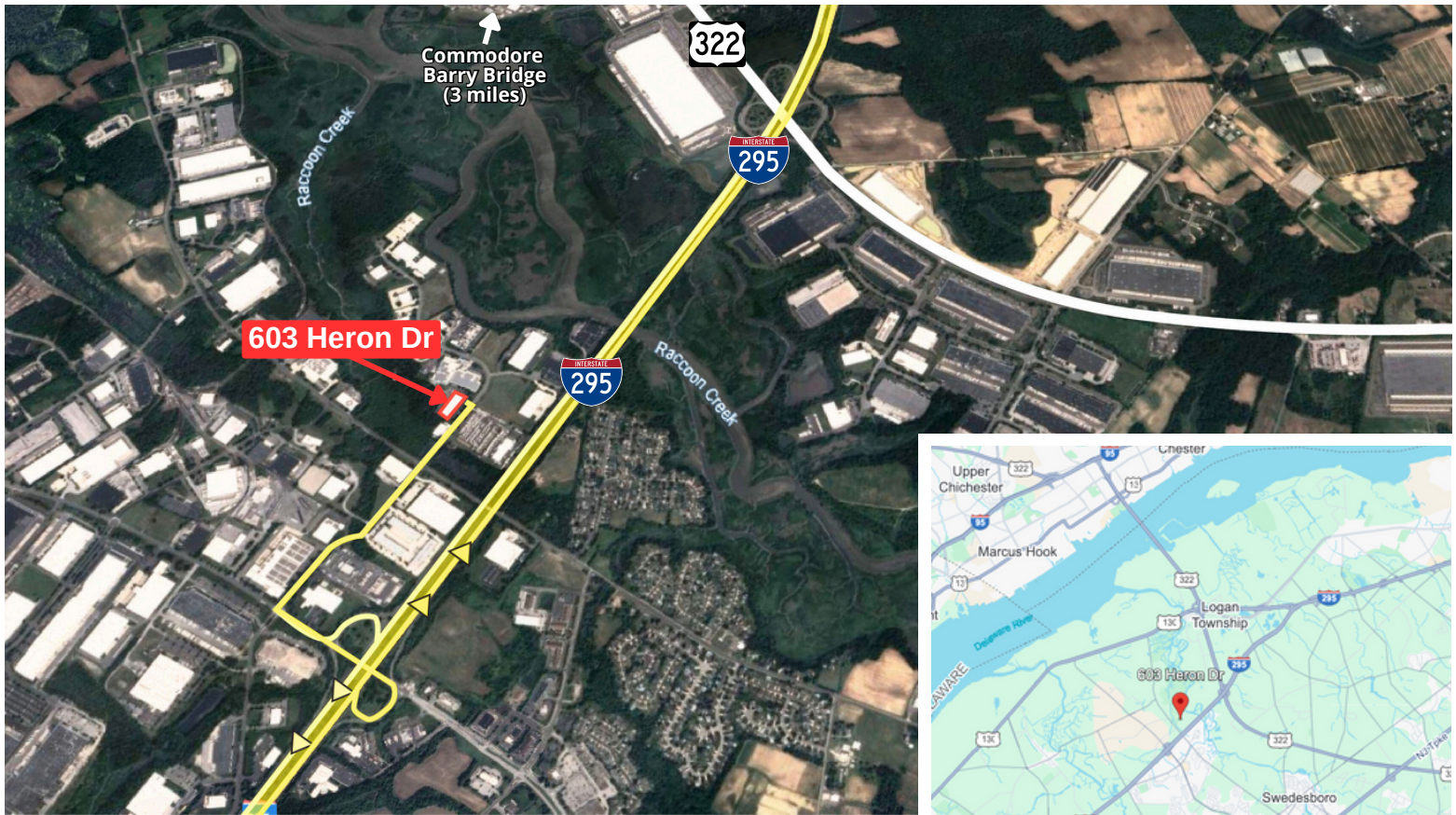
THE FLYNN COMPANY

WWW.FLYNNCO.COM | 1621 WOOD STREET, PHILADELPHIA, PA 19103 | 215.561.6565

FLOOR PLAN & LOCATION



TOTAL • 5,239 SF
OFFICE • 1,470 SF
WAREHOUSE • 3,769 SF



**For More Information
Please Contact:**

DAVID RICCI
DRICCI@FLYNNCO.COM
215-561-6565 X 154

BRANDO CASALICCHIO
BCASALICCHIO@FLYNNCO.COM
215-561-6565 X 153