

4694 Millennium Dr

Belcamp, MD

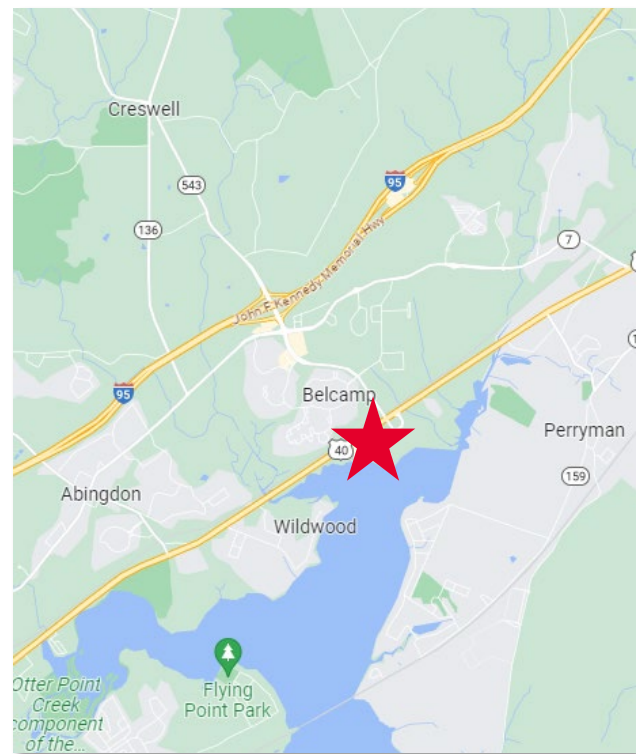
Class A Office / For Sublease



**12,684 SF AVAILABLE
FOR SUBLEASE ON THE 2ND FLOOR**

SUBLEASE HIGHLIGHTS

- Sublease Term through: August 31, 2031
- Direct access and visibility from Route 40/Pulaski Highway and close proximity to I-95
- Several amenities within a few minutes drive



Charlie Fenwick / charles.fenwick@cushwake.com / +1 410 953 6693

CUSHMANWAKEFIELD.COM

Cushman & Wakefield Copyright 2023. No warranty or representation, express or implied, is made to the accuracy or completeness of the information contained herein, and same is submitted subject to errors, omissions, change of price, rental or other conditions, withdrawal without notice, and to any special listing conditions imposed by the property owner(s). As applicable, we make no representation as to the condition of the property (or properties) in question.



4694 Millennium Dr

Belcamp, MD

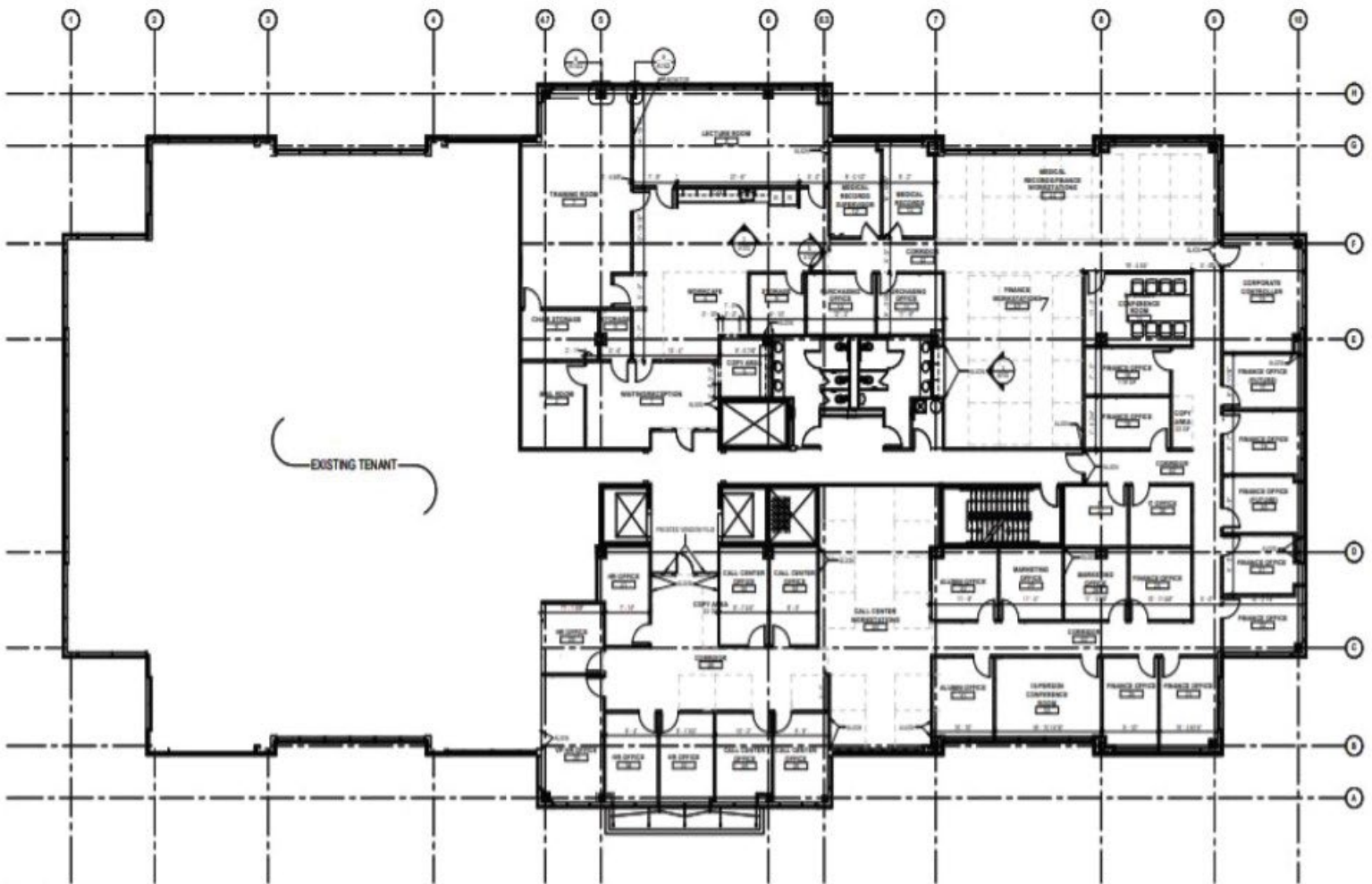
Class A Office / For Sublease

FLOORPLAN

SECOND FLOOR

SUITE 200

12,684 SF AVAILABLE



Charlie Fenwick / charles.fenwick@cushwake.com / +1 410 953 6693

CUSHMANWAKEFIELD.COM

Cushman & Wakefield Copyright 2023. No warranty or representation, express or implied, is made to the accuracy or completeness of the information contained herein, and same is submitted subject to errors, omissions, change of price, rental or other conditions, withdrawal without notice, and to any special listing conditions imposed by the property owner(s). As applicable, we make no representation as to the condition of the property (or properties) in question.



4694 Millennium Dr

Belcamp, MD

Class A Office / For Sublease



Charlie Fenwick / charles.fenwick@cushwake.com / +1 410 953 6693

CUSHMANWAKEFIELD.COM

Cushman & Wakefield Copyright 2023. No warranty or representation, express or implied, is made to the accuracy or completeness of the information contained herein, and same is submitted subject to errors, omissions, change of price, rental or other conditions, withdrawal without notice, and to any special listing conditions imposed by the property owner(s). As applicable, we make no representation as to the condition of the property (or properties) in question.

