



St. Francis Medical Institute

804 N Belcher Rd. Clearwater, FL 33765

💰 Purchase Price: **\$1,650,000**

💰 Lease Rate: **\$25 PSF**

📏 Unit Size: **6,185 SF**

✅ Available: **Now**



Kevin Yeager

VP Commercial Service

(727) 214-4590 📞

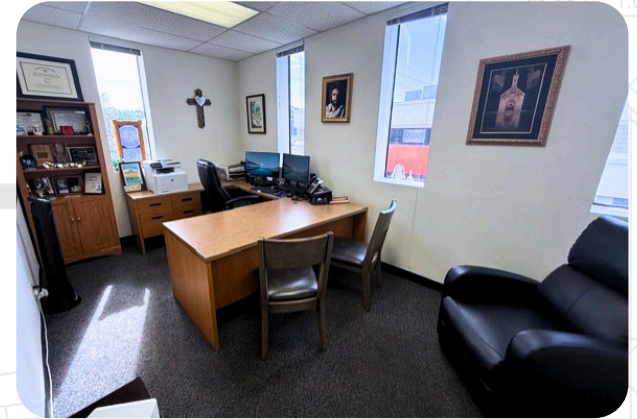
kevin@cprteam.com 📧

Jeff Clapacs

Vice President

(813) 833-0788 📞

jeff@cprteam.com 📧




Prime Features

P 20 Surface Parking Spaces

 Concrete Building (1986)

 Two Stories w/ADA Lift

 Excellent Visibility & Signage



804 N Belcher Rd. Clearwater, FL 33765

This 6,185 SF standalone professional office building offers an exceptional opportunity for investors, medical users, or owner-occupants in a highly visible Clearwater location. Constructed of solid concrete in 1986, the two-story building provides flexible layouts suitable for medical and professional office users, with the ability to accommodate 2–4 tenants or a single owner-occupant.

The downstairs of the property features a 1,650 SF move-in ready medical office space available immediately, along with a 1,350 SF office space currently leased to a law firm. An additional 3,000 SF upstairs will become available within 90 days, providing expansion potential or additional leasing income. **Located on Belcher Road with approximately 30,000 vehicles per day,** the property benefits from excellent visibility and signage opportunities. The building is equipped with an ADA lift and offers 20 surface parking spaces (3.2 per 1,000 SF), providing convenient access for patients, clients, and staff.

With existing tenancy in place and additional suites becoming available, 804 N Belcher Rd presents a rare combination of income potential, owner-user flexibility, and strong frontage in one of Clearwater's established office corridors.

Highlights



Medical & Professional Offices



6,185 SF Standalone Office Building For Sale



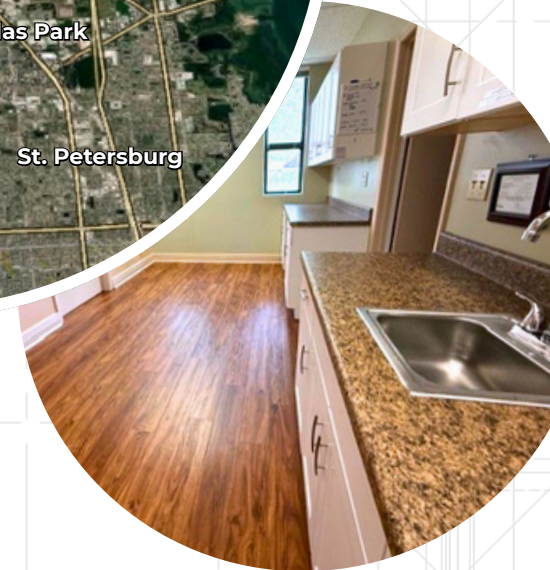
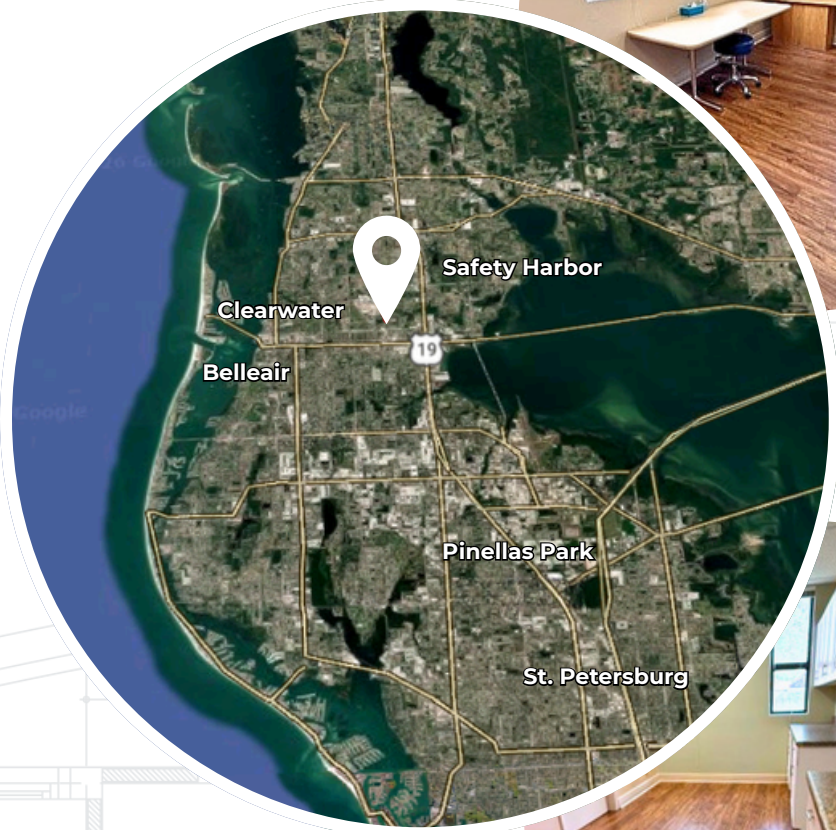
Flexibility For 2 To 4 Tenants Or Owner-Occupied



Available For Lease: 1,500 SF Ground Floor
Available For Lease: 3,000 SF Upstairs



ADT = 30,000 Vehicles On Belcher And Coachman



Information herein is not warranted and subject to change without notice. We assume no liabilities for errors and omissions.

Listing Team



Kevin Yeager

VP Commercial Services

☎ (727) 214-4590

✉ kevin@cprteam.com



Jeff Clapacs

Vice President

☎ (813) 833-0788

✉ jeff@cprteam.com

☎ 727-822-4715

🌐 www.cprteam.com

🔗 [CommercialPartnersRealty](https://www.commercialpartnersrealty.com)