

151

# KALMUS

BLDG. K1, COSTA MESA

±4,100 SF OFFICE

FOR LEASE



 **LEE &  
ASSOCIATES**  
COMMERCIAL REAL ESTATE SERVICES

**ALLEN BASSO**  
Sr. Vice President  
Lic# 01298152  
949.790.3130  
[abasso@leeirvine.com](mailto:abasso@leeirvine.com)

**BRIAN GARBUTT**  
Sr. Vice President  
Lic# 01215482  
949.724.4721  
[bgarbutt@lee-associates.com](mailto:bgarbutt@lee-associates.com)

# PROPERTY FEATURES

- Unit K1: ±4,100 SF Office Unit
- Single-Story Flex/Office Building
- Recently Upgraded with New Paint, Flooring, and HVAC
- Includes Six Private Offices, Conference Room, and Bonus Space
- Ideal for Medical, Wellness, Creative, or Professional Use
- 3:1 Parking Ratio
- Direct Access to 405, 55, and 72 Freeways
- Close Proximity to Major Retail and Restaurants Including South Coast Plaza, The Lab, SOCO & The OC Mix and CAMP

**LEASE RATE: \$1.95 MG**

**ALLEN BASSO**

Sr. Vice President

Lic# 01298152

949.790.3130

abasso@leeirvine.com

**BRIAN GARBUTT**

Sr. Vice President

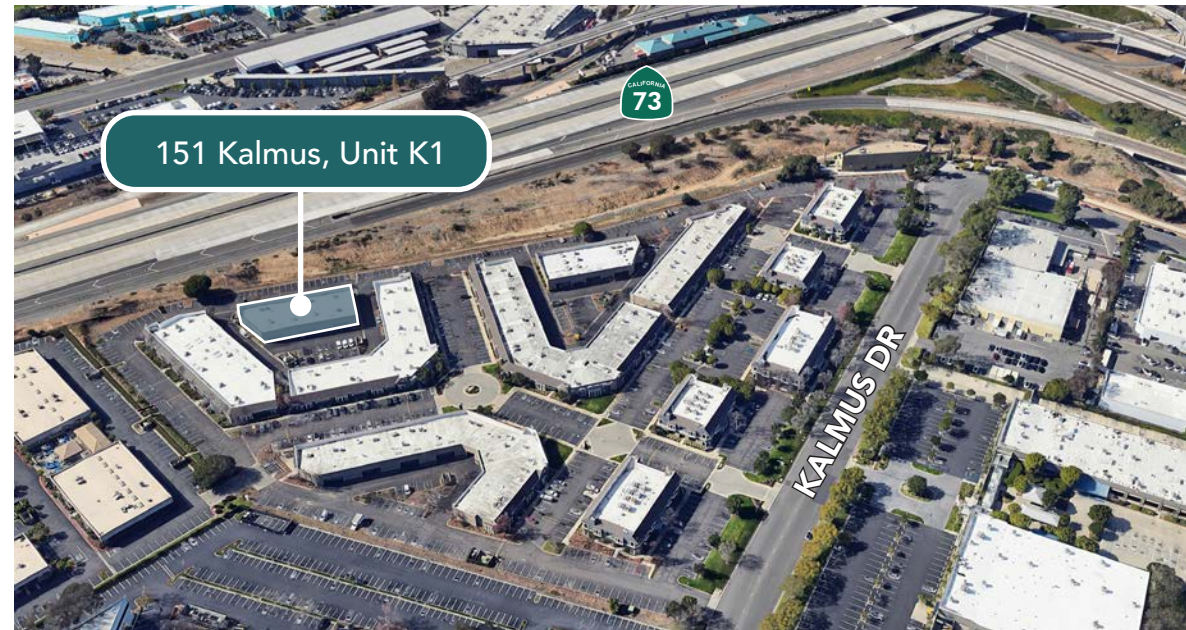
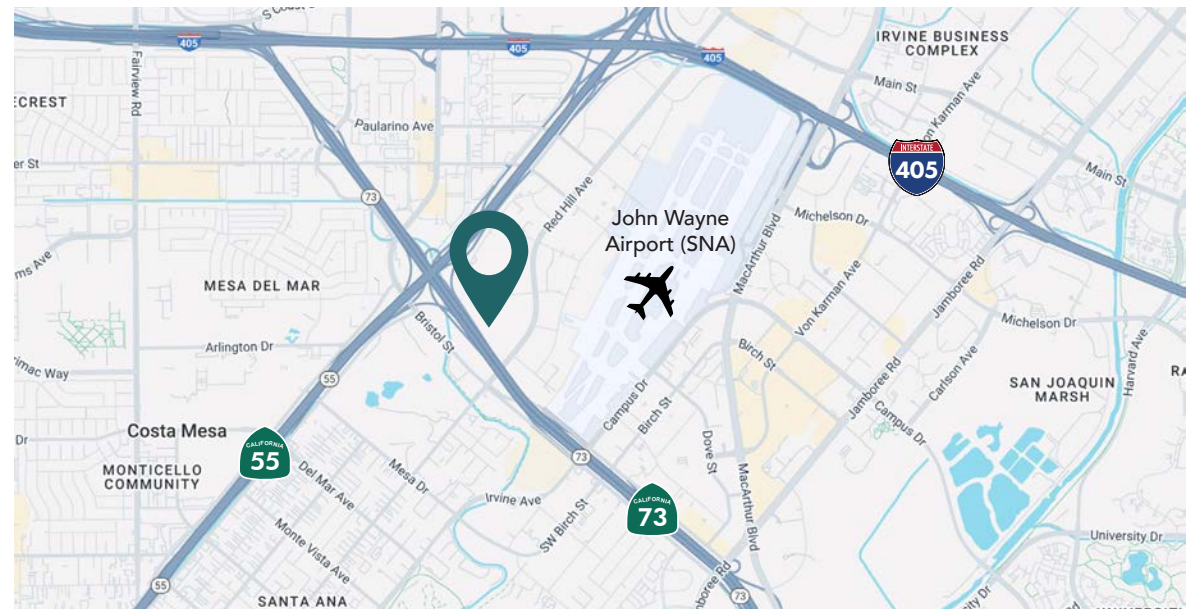
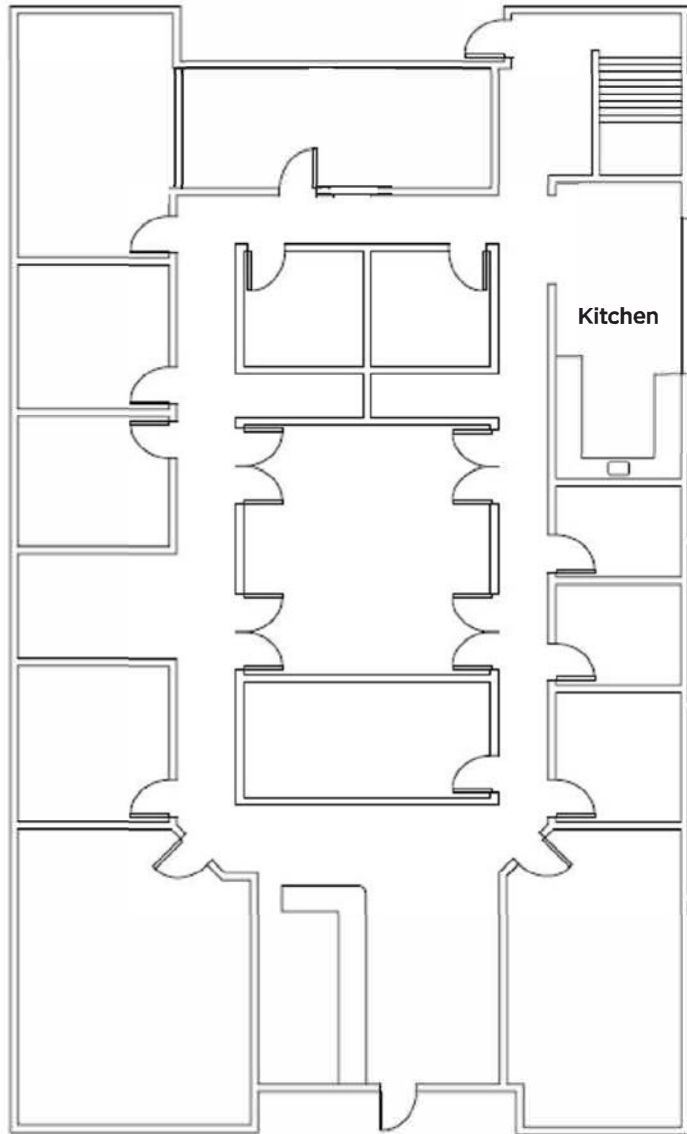
Lic# 01215482

949.724.4721

bgarbutt@lee-associates.com



# FLOOR PLAN



For More Information, Contact:

**ALLEN BASSO**  
Sr. Vice President  
Lic# 01298152  
949.790.3130  
abasso@leeirvine.com

**BRIAN GARBUTT**  
Sr. Vice President  
Lic# 01215482  
949.724.4721  
bgarbutt@lee-associates.com