

# 2001 Australian Avenue

Riviera Beach, FL

±111,000 SF OFFICE/WAREHOUSE SPACE AVAILABLE - RIVIERA BEACH, FL



## PROPERTY HIGHLIGHTS

- + ±111,000 SF Warehouse/Office Building with ±1 Acre Storage Yard
- + Available Space:
  - ±13,500 SF - Available Q2 2026
  - ±27,000 SF - Available NOW
  - ±30,000 SF - Available NOW
  - ±54,000 SF - Available NOW
- + Heavy Power - 3 Phase
- + Minutes from I-95 and the Port of Palm Beach within the Gran Park at Lewis Terminals
- + FEC Rail Service to Rear of Building
- + City Water and Sewer
- + Fully Fire Sprinklered
- + Tilt-Wall Construction
- + Hurricane Resistant Pre-Stress Concrete Twin T-Roof
- + Zoned IL, Light Industrial (City of Riviera Beach)
- + Dock and Ramp Loading
- + Clear Height 28'
- + Year Built - 1982

## Contact Us

### ROBERT C. SMITH

Executive Vice President

+1 561 707 5558

robert.c.smith@cbre.com

### KIRK NELSON

Executive Vice President

+1 561 716 9936

kirk.nelson@cbre.com

**Lease Rate - Call for Details**

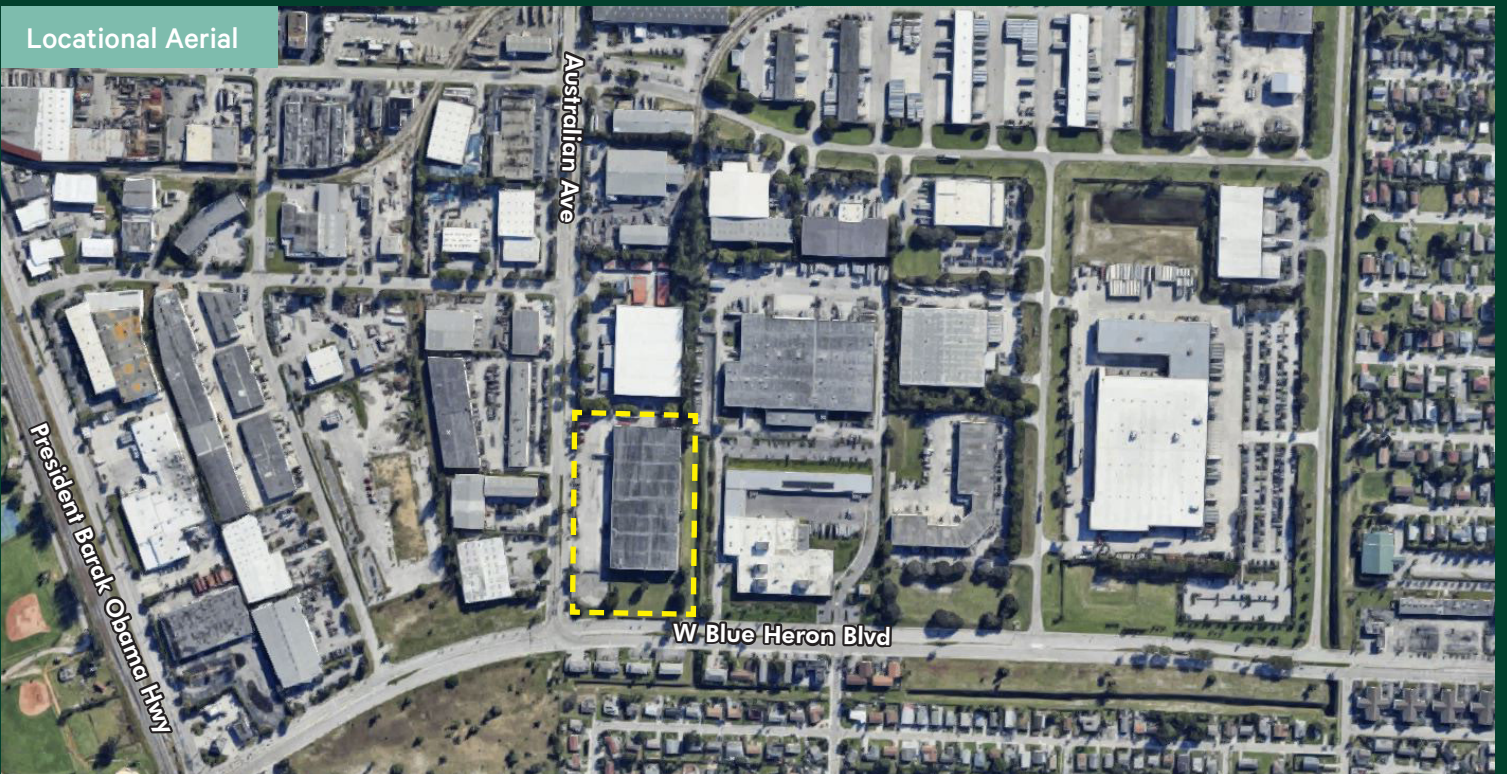
±111,000 SF AVAILABLE OFFICE/WAREHOUSE SPACE  
2001 Australian Avenue | Riviera Beach, FL

For Lease

Additional Photos



Locational Aerial



Contact Us

**ROBERT C. SMITH**  
Executive Vice President  
+1 561 707 5558  
robert.c.smith@cbre.com

**KIRK NELSON**  
Executive Vice President  
+1 561 716 9936  
kirk.nelson@cbre.com

© 2025 CBRE, Inc. All rights reserved. This information has been obtained from sources believed reliable, but has not been verified for accuracy or completeness. You should conduct a careful, independent investigation of the property and verify all information. Any reliance on this information is solely at your own risk. CBRE and the CBRE logo are service marks of CBRE, Inc. All other marks displayed on this document are the property of their respective owners, and the use of such logos does not imply any affiliation with or endorsement of CBRE. Photos herein are the property of their respective owners. Use of these images without the express written consent of the owner is prohibited.