

# 219 WEST 14TH STREET

BETWEEN 7TH & 8TH AVENUES | CHELSEA

Chelsea  NATURE & MORE  
Organic CONVENIENCE

FRESH FLOWERS  
\$29.99

# 219 WEST 14TH STREET

BETWEEN 7TH & 8TH AVENUES | CHELSEA

## PROPERTY DETAILS

SIZE: 800 SF Ground Floor  
~200 SF Storage Basement

FRONTAGE: 15'

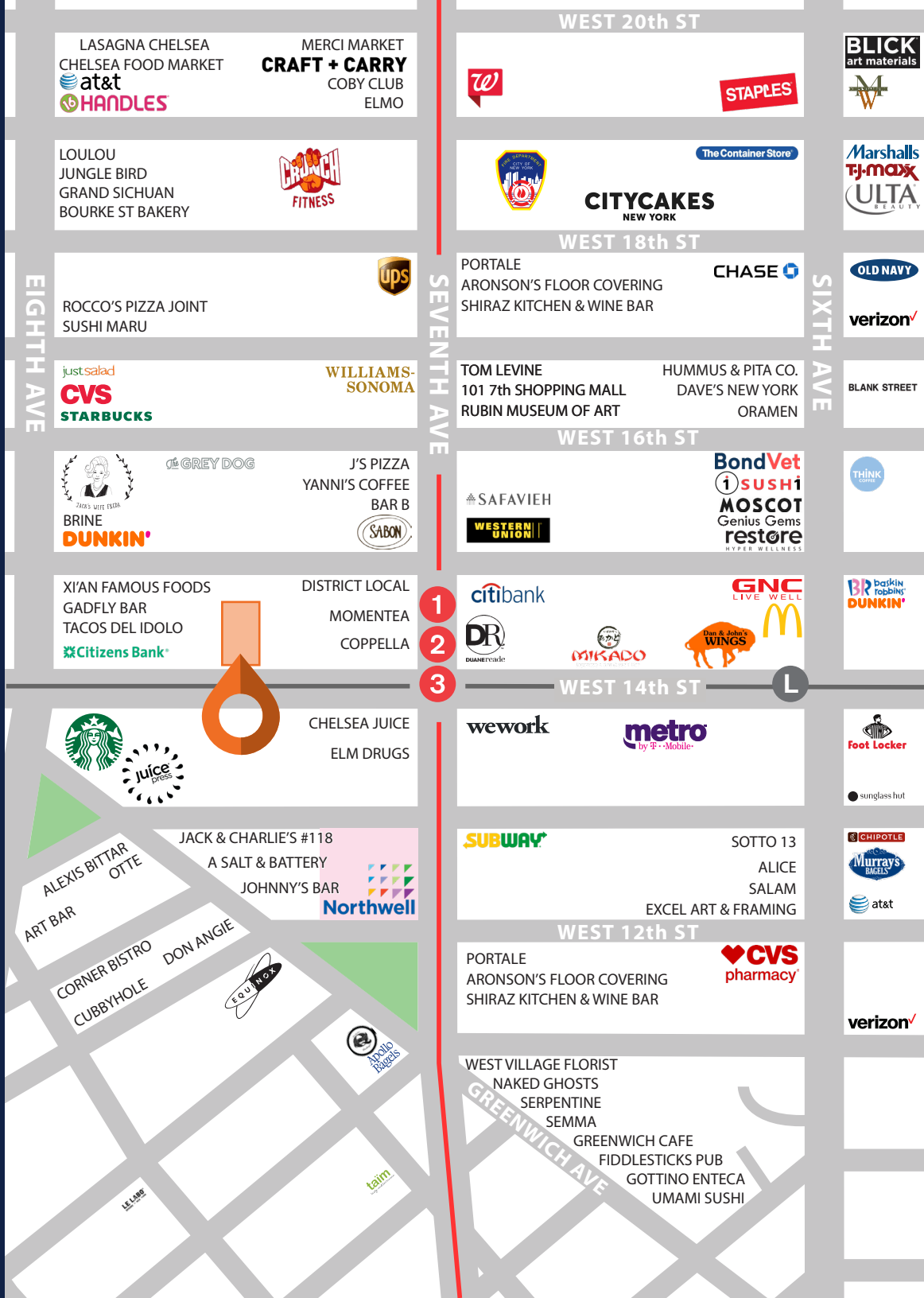
CEILING HEIGHT: 10'

POSSESSION: Immediate

TRANSPORTATION: **1 2 3 A C E L**

## HIGHLIGHTS

- Formerly *Chelsea Organics*
- High foot traffic area
- Dense residential neighborhood
- Neighboring tenants include: *Starbucks, Chase Bank, Bank of America, Citi Bank, Duane Reade (Walgreens), CVS Pharmacy, The UPS Store, The Vitamin Shoppe, Whole Foods Market, Trader Joe's, Target, TJ Maxx, & more!*

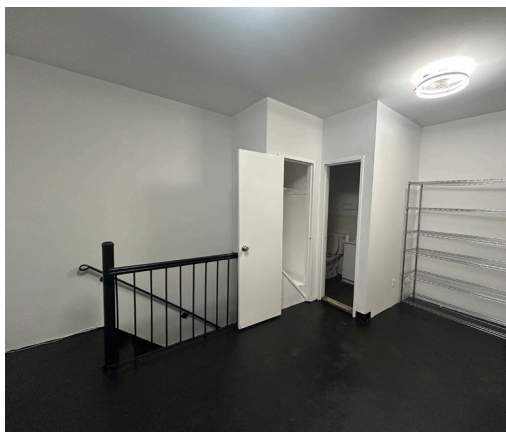


All information supplied in this marketing presentation and/or flyer is from sources deemed reliable and is furnished subject to errors, omissions, modifications, removal of listings from sale/lease and to any listing condition. Any square footage, dimensions, floor plans and/or technical data set forth are approximations and are subject to further elaboration/confirmation.

# 219 WEST 14TH STREET

BETWEEN 7TH & 8TH AVENUES | CHELSEA

INTERIORS:

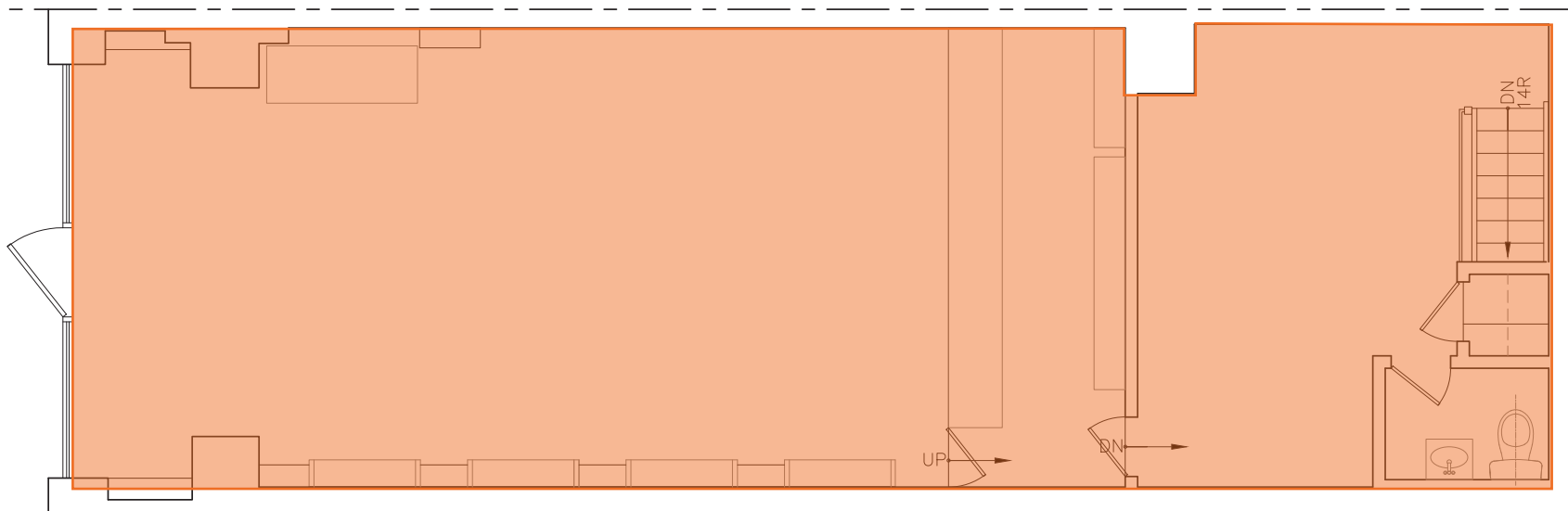


# 219 WEST 14<sup>TH</sup> STREET

BETWEEN 7<sup>TH</sup> & 8<sup>TH</sup> AVENUES | CHELSEA

FLOOR PLANS:

GROUND FLOOR - 800 SF



BASEMENT - 200 SF



# 219 WEST 14<sup>TH</sup> STREET

---

BETWEEN 7<sup>TH</sup> & 8<sup>TH</sup> AVENUES | CHELSEA

FOR MORE INFORMATION,  
PLEASE CONTACT:

**HUNTER LAZAN**

772.559.5195 | HLazan@ksrny.com

**FREDDY SOUID**

917.968.0329 | FSouid@ksrny.com

**JACK KHASKI**

917.355.0559 | JackK@ksrny.com

