

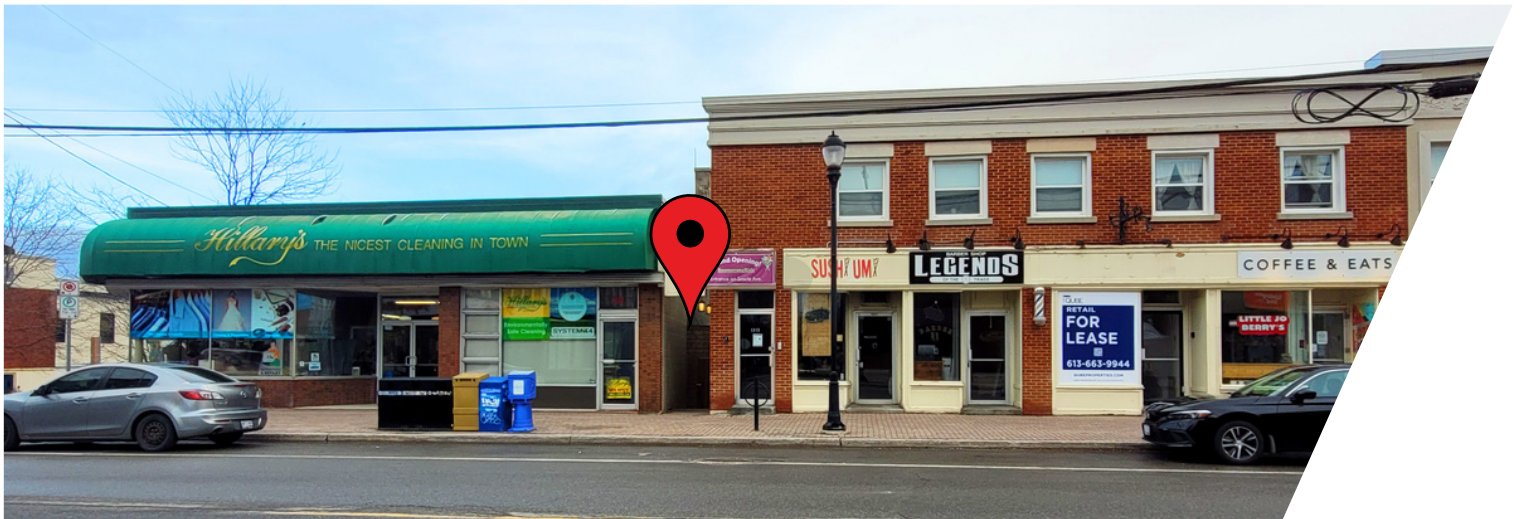
FOR LEASE



1315 Wellington St. W.
OTTAWA, ONTARIO



1315 Wellington St. W.
OTTAWA, ONTARIO



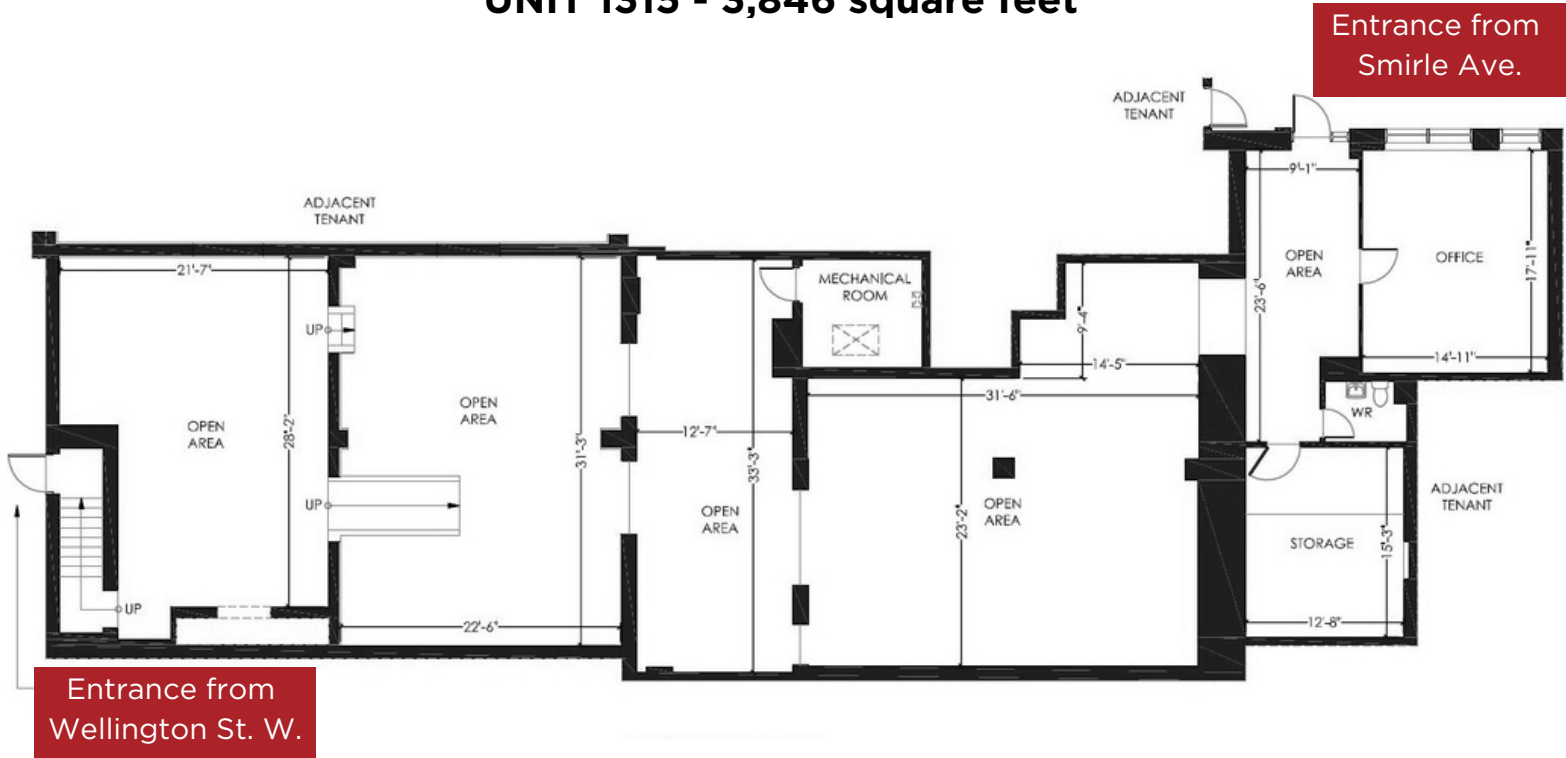
THE PROPERTIES GROUP MANAGEMENT LTD.
236 Metcalfe Street, Ottawa, ON K2P 1R3

(613) 369-5635 / leasing@prpgrp.com
www.thepropertiesgroup.ca



1315 Wellington St. W.
OTTAWA, ONTARIO

UNIT 1315 - 3,846 square feet



THE ATTACHED DRAWINGS ARE PROVIDED FOR INFORMATION PURPOSES ONLY AND SHOULD NOT BE RELIED UPON. THE LANDLORD SHALL NOT BE HELD RESPONSIBLE FOR THE PURPOSE OF THE TENANT'S WORK AND SPACE PLANNING.

UNIT OVERVIEW

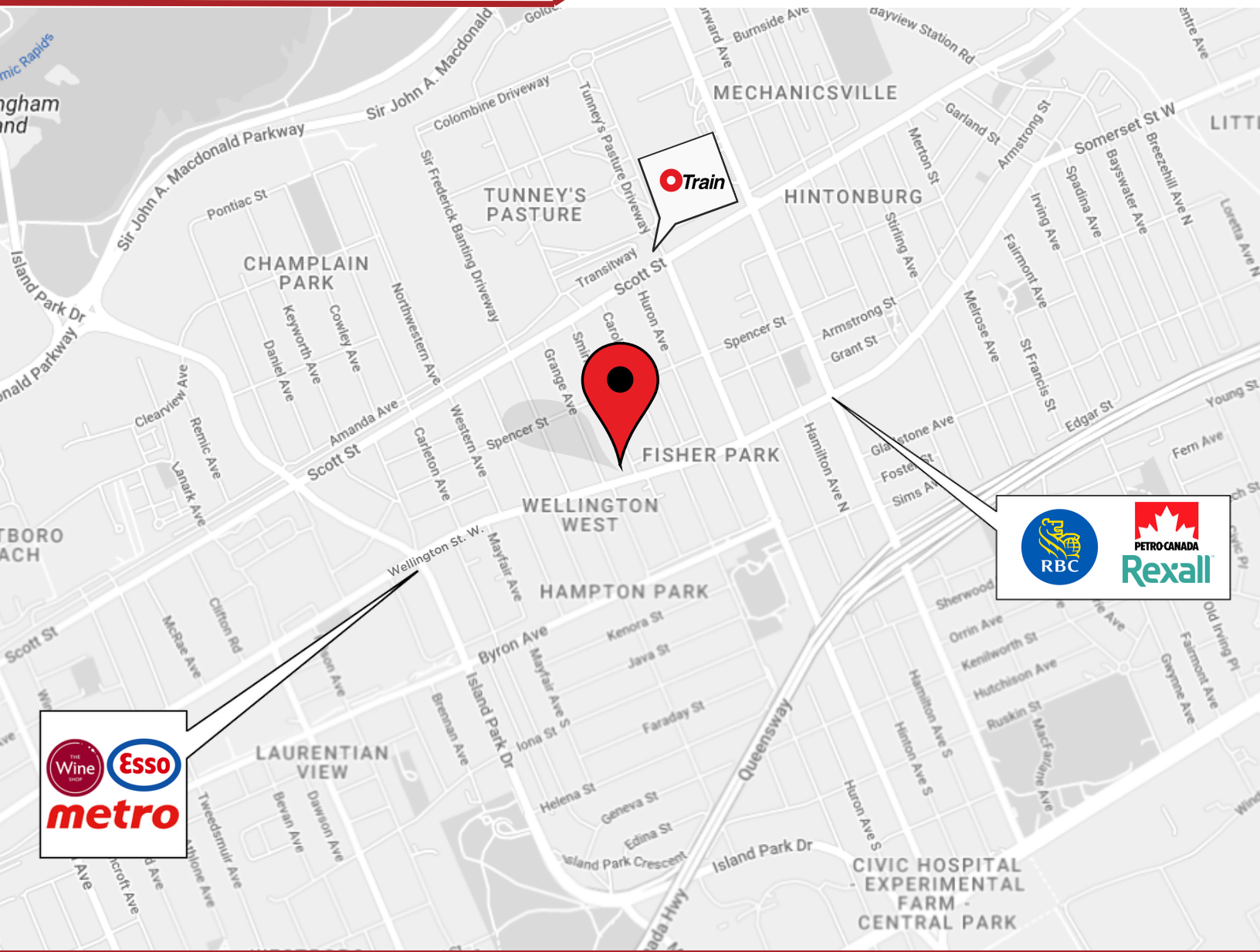
Nestled in the heart of Wellington West, walking distance from Tunney's Pasture LRT Station, this 3,846 sq. ft. unit features two entrances, Wellington St. W. and Smirle Ave., and is perfect for a tenant looking for a large space with a central location and does not require street frontage. The unit neighbours countless restaurants, cafes, retail boutiques, and services located on Wellington St. W.

UNIT HIGHLIGHTS

- Two entrances
- Large space



1315 Wellington St. W.
OTTAWA, ONTARIO



LOCATION DETAILS

- Prime retail location
- Year-round foot traffic
- Close proximity to Tunney's Pasture O-Train station
- Close proximity to Hwy. 417 Parkdale exit

Information contained herein has been obtained from sources that we deem to be reliable but is not warranted as such and does not form any part of any future contract. This offering may be altered or withdrawn at any time without notice.

THE PROPERTIES GROUP MANAGEMENT LTD.
236 Metcalfe Street, Ottawa, ON K2P 1R3

(613) 369-5635 / leasing@prpgrp.com
www.thepropertiesgroup.ca