

851 Napa Valley Corporate Way, Napa

Suite I ~ ±14,258 SF ~ \$1.25/SF/Mo. NNN



- Reception Area
- ±18 Private Offices
- Multiple Conference Rooms
- Kitchenette & Private Restrooms
- Shared Restrooms w/Showers
- Single-Story Office
- Large Cubicle Areas
- Some Cubicles May Remain
- Separately Metered
- Walking Distance to Dining
- Located in City of Napa
- Bus Stop Nearby



A lease of five years or more will be granted a concession of three months free Base Rent if the lease is signed by the end of 2025.

NOTE: THIS SUITE IS DIVISIBLE from approx. ±3,000 SF - ±14,258 SF. Divisions will affect the price, but be reasonably negotiated.

Virtual Tour: <https://www.youtube.com/watch?v=LPh30-BTnMQ>

**For up to 5 Years, then 1.5% for any extended term.*

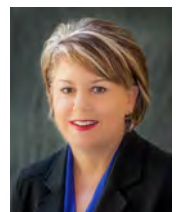


Michael Moffett
License #00946472
707.479.1976
mmoffett@cnapavalley.com

1775 Lincoln Ave.
Napa, CA 94558

Cathy D'Angelo Holmes

License #01355085
707.304.3338
cholmes@cnapavalley.com



851 Napa Valley Corporate Way, Napa

Suite I ~ ±14,258 SF ~ \$1.25/SF/Mo. NNN



Reception



Open Area



Large Conference Room



Second Conference Room



Michael Moffett

License #00946472

707.479.1976

mmoffett@cnapavalley.com

1775 Lincoln Ave.

Napa, CA 94558

Cathy D'Angelo Holmes

License #01355085

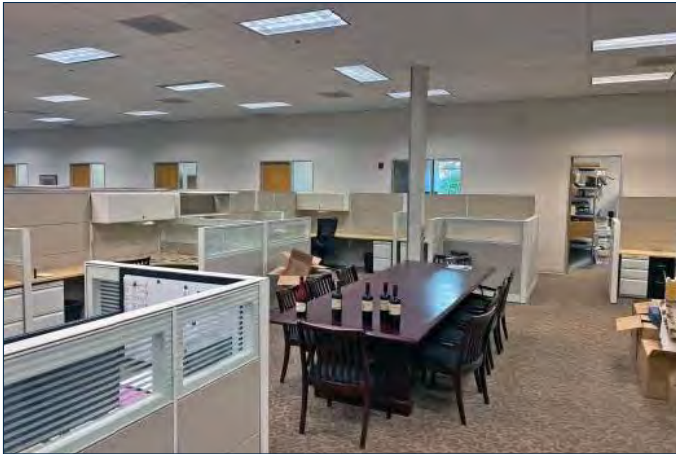
707.304.3338

cholmes@cnapavalley.com



851 Napa Valley Corporate Way, Napa

Suite I ~ ±14,258 SF ~ \$1.25/SF/Mo. NNN



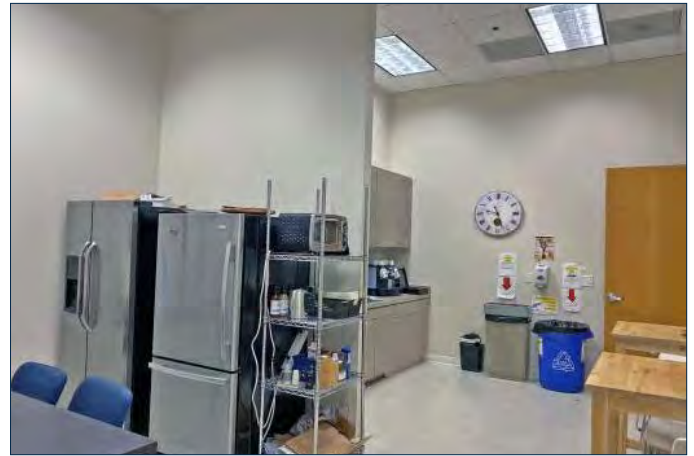
Open Area



Typical Private Office



Coffee Area



Kitchen



Michael Moffett

License #00946472

707.479.1976

mmoffett@cnapavalley.com

1775 Lincoln Ave.

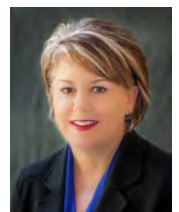
Napa, CA 94558

Cathy D'Angelo Holmes

License #01355085

707.304.3338

cholmes@cnapavalley.com



851 Napa Valley Corporate Way, Napa

Suite I ~ ±14,258 SF ~ \$1.25/SF/Mo. NNN



Michael Moffett
License #00946472
707.479.1976
mmoffett@cnapavalley.com

1775 Lincoln Ave.
Napa, CA 94558

Cathy D'Angelo Holmes

License #01355085
707.304.3338
cholmes@cnapavalley.com



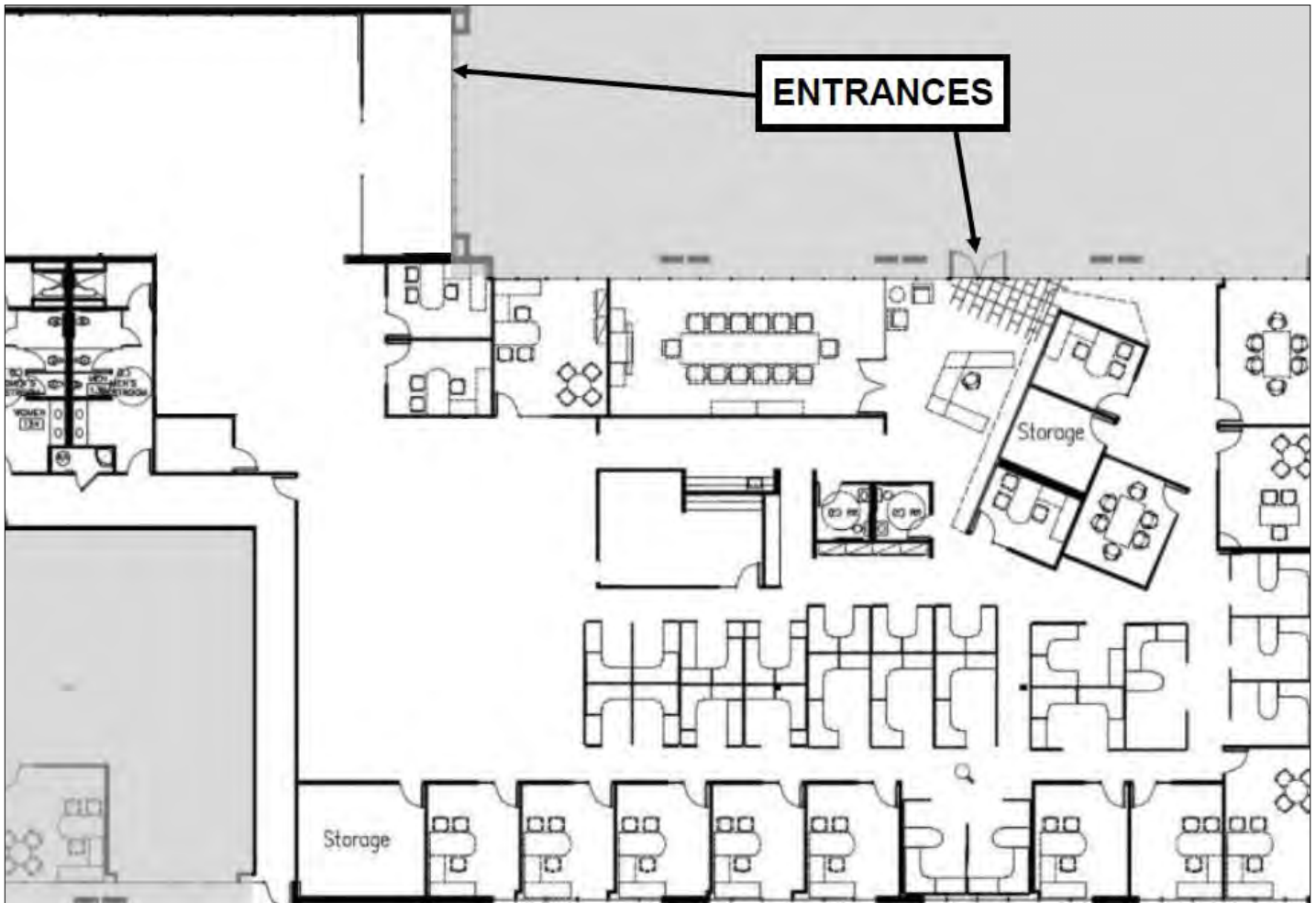


**COLDWELL BANKER
COMMERCIAL**
BROKERS
OF THE VALLEY

851 Napa Valley Corporate Way, Napa

Suite I ~ ±14,258 SF ~ \$1.25/SF/Mo. NNN

Floor Plan



Michael Moffett
License #00946472
707.479.1976
mmoffett@cnapavalley.com

1775 Lincoln Ave.
Napa, CA 94558

Cathy D'Angelo Holmes

License #01355085
707.304.3338
cholmes@cnapavalley.com

