

21204 Erwin Street



Free-Standing Building for Lease / Prime Warner Center
21204 Erwin Street
Woodland Hills, CA

Jay Rubin, Principal
818.223.4385
jrubin@lee-re.com
DRE #01320005

 **LEE & ASSOCIATES**
COMMERCIAL REAL ESTATE SERVICES
CORP ID #01191898

No warranty or representation is made as to the accuracy of the foregoing information. Terms of sale or lease and availability are subject to change or withdrawal without notice.

21204 Erwin Street

Woodland Hills, CA

Free-Standing Building for Lease Prime Warner Center



PROPERTY DETAILS

21204 Erwin St

Available: 11,130 Rentable Square Feet
Lease Rate: \$2.40 per RSF, Modified Gross
Parking: 3/1,000 SF



PROPERTY HIGHLIGHTS

- Prestigious location in the Heart of Warner Center
- Free-Standing Building
- Dramatic High Ceilings
- Skylights
- Building Signage
- Connected with AT&T Fiber
- Modern Buildout



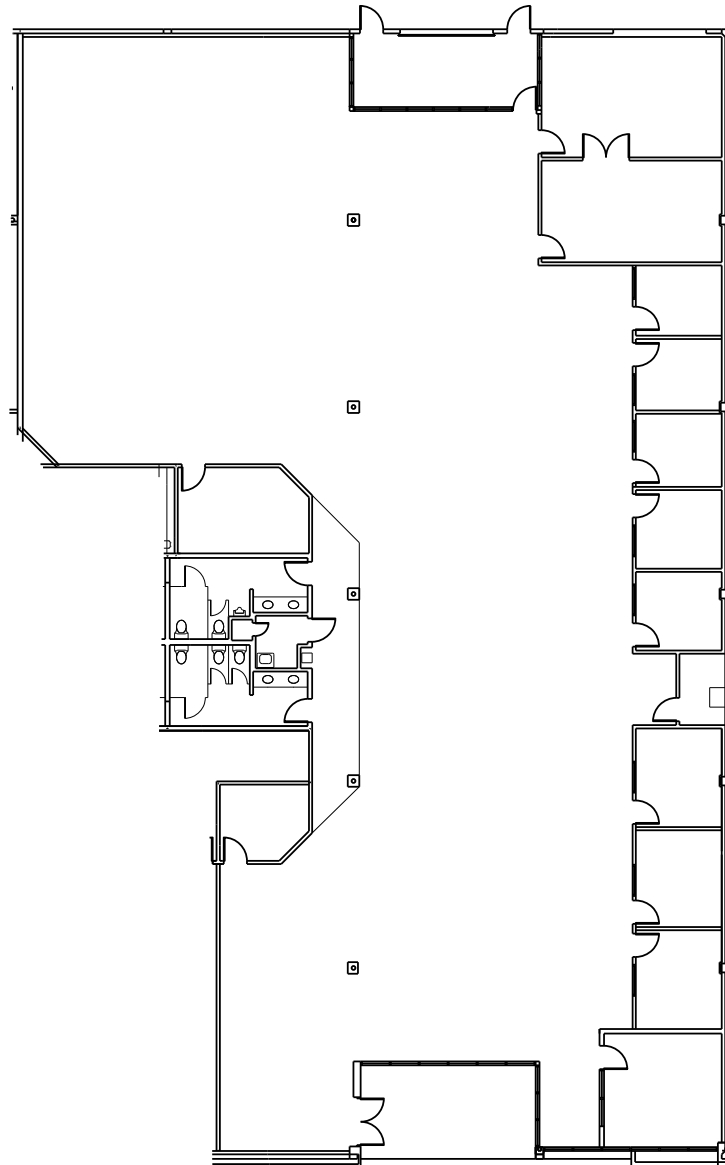
21204 Erwin Street

Woodland Hills, CA

Free-Standing Building for Lease

Prime Warner Center

FLOOR PLAN



*Not to scale

21204 Erwin Street

Woodland Hills, CA

Free-Standing Building for Lease

Prime Warner Center



LEASING INFORMATION

Jay Rubin

Principal

818.223.4385

jrubin@lee-re.com

DRE #01320005



Lee & Associates® - LA North/Ventura, Inc.
Corporate ID #01191898
A Member of the Lee & Associates®
Group of Companies
5707 Corsa Ave., Suite 200
Westlake Village, CA 91302
P:818.223.4388 F:818.591.1450