

Hunt Industrial



FLEX / WAREHOUSE SPACE FOR LEASE

15430 County Road 565A, Groveland, FL 34736

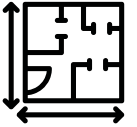
Contact: Bryan Richardson
 Senior Sales & Leasing Associate

E: Bryan@FCPG.com
 P: 407.872.0177 ext. 137

For Lease: \$15.50 - \$16.50 / SF, NNN

± 900 - 6,000 SF Available

Zoning: M-1, Light Industrial



**VARIED SUITE
 LAYOUTS AVAILABLE**

Suites Feature Grade Level Loading and 12'x14' Roll-Up Doors.
 2 Shared Dock-High Loading/Unloading Bays in the Park

Diverse users within 17-Building, 200,000 SF Small-Bay Industrial
 Park, the largest in South Lake County

On-Site Management Services, Directory Signage and Shared
 Wifi throughout park

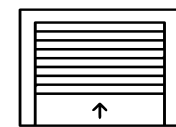
Entire property is fenced and secured with gate code access
 at three separate points across property

Varied suite sizes and features available allowing for high
 degree of flexibility and customization

Ideally Situated near SR 50, Highway 27 and Florida's Turnpike
 for easy access to Greater Central Florida



**SECURE GATED
 PROPERTY**



**12'x14' ROLL-
 UP DOORS**

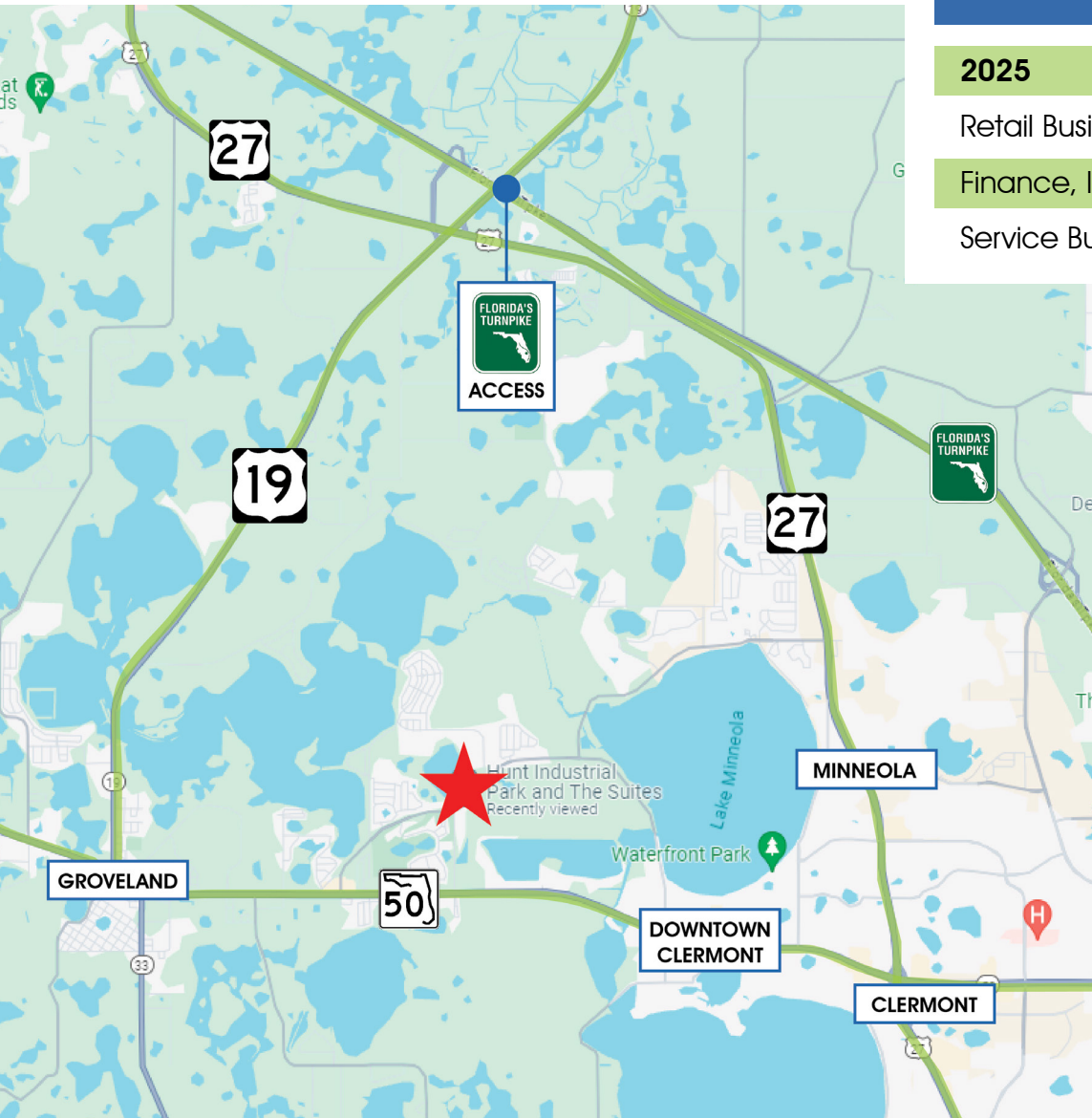


**GRADE-LEVEL
 ACCESS**

615 E. Colonial Dr., Orlando, FL 32803 Phone: 407.872.0209 www.FCPG.com

Information furnished regarding the subject property is believed to be accurate, but no guarantee or representation is made. References to square footage are approximate. This offering is subject to errors, omissions, prior sale or lease or withdrawal without notice. ©2026 First Capital Property Group, Licensed Real Estate Brokers & Managers.

LOCATION



Surrounding Businesses

2025	5 Mins	10 Mins	15 Mins
Retail Businesses	34	253	575
Finance, Insurance, & Real Estate Businesses	9	126	274
Service Businesses	52	548	1,291

Drive Times & Traffic Counts



2 minutes
(1 mile)



5 minutes
(3.2 miles)



9 minutes
(4.9 miles)



13 minutes
(7.3 miles)

DEMOGRAPHICS

2025



Total Population



Total Households



Average HH Income

5 Mins

5,997

2,105

\$125,450

10 Mins

27,364

9,937

\$107,463

15 Mins

78,585

28,617

\$103,634

615 E. Colonial Dr., Orlando, FL 32803 Phone: 407.872.0209 www.FCPG.com

Information furnished regarding the subject property is believed to be accurate, but no guarantee or representation is made. References to square footage are approximate. This offering is subject to errors, omissions, prior sale or lease or withdrawal without notice. ©2026 First Capital Property Group, Licensed Real Estate Brokers & Managers.



SITE PLAN



615 E. Colonial Dr., Orlando, FL 32803 Phone: 407.872.0209 www.FCPG.com

Information furnished regarding the subject property is believed to be accurate, but no guarantee or representation is made. References to square footage are approximate. This offering is subject to errors, omissions, prior sale or lease or withdrawal without notice. ©2026 First Capital Property Group, Licensed Real Estate Brokers & Managers.

AVAILABILITY

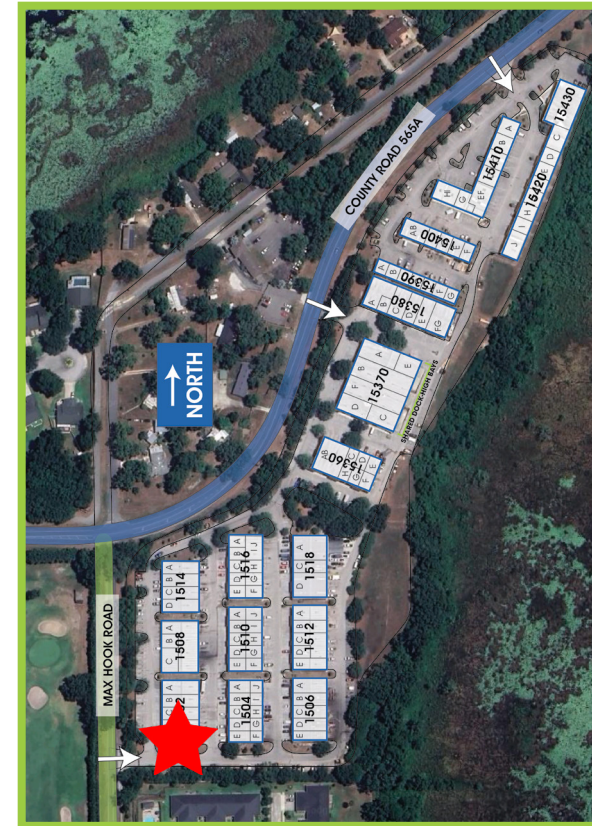
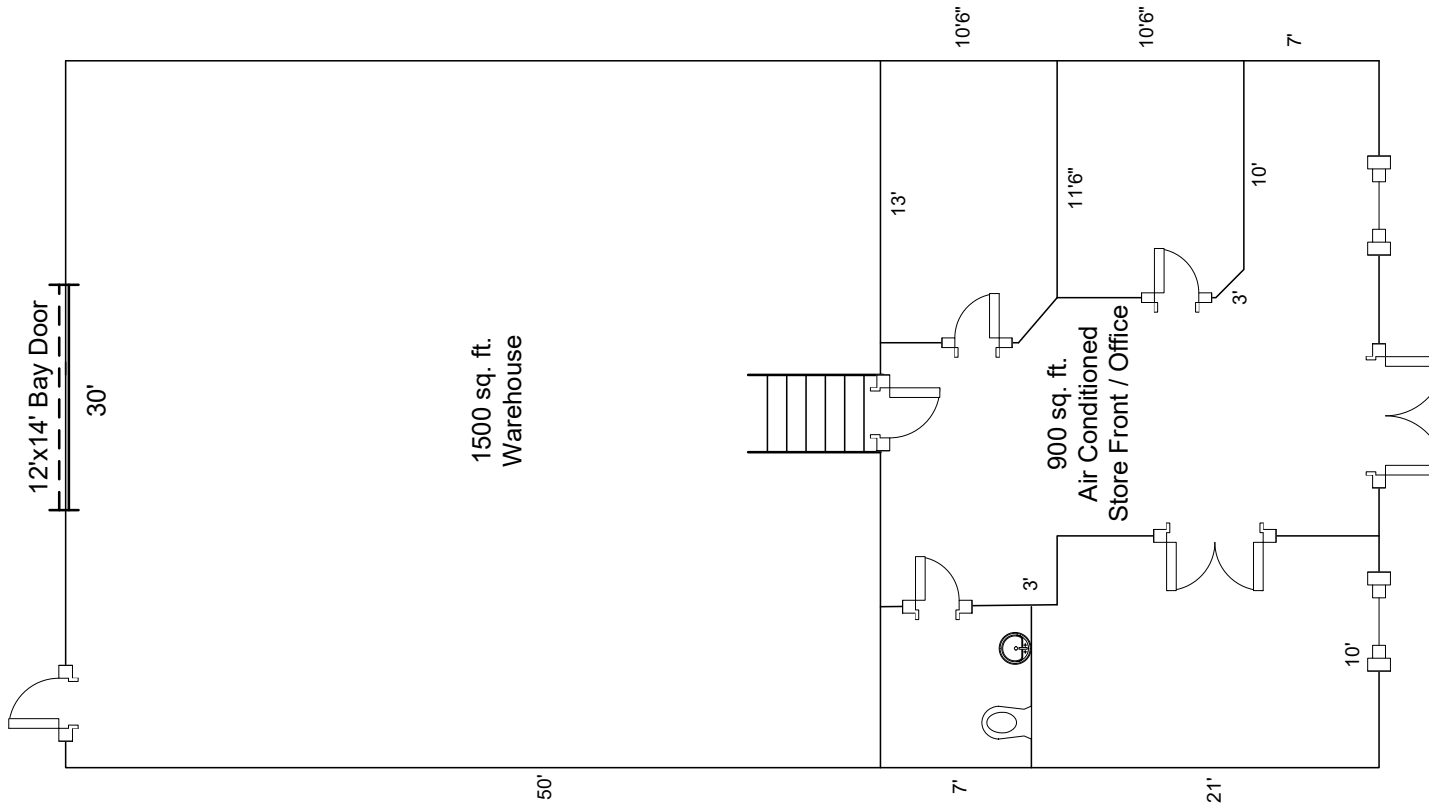
Building	Suite	Square Footage	\$/SF Rate	Availability	Suite Details	Accessibility
1502	E	2,400 SF	\$16.00	30 Days	1,500 SF Warehouse 900 SF A/C Office	(1) 12'x14' Bay Door (1) Standard Double Door Entry (1) Standard Single Door
1504	C	1,500 SF	\$16.50	Now	1,250 SF Warehouse 250 SF A/C Office	(1) 12'x14' Bay Door (1) Standard Single Door
1510	A	1,200 SF	\$16.50	Now	374 SF Warehouse 826 SF Office	(1) 12'x14' Bay Door (1) Standard Single Door (1) Standard Double Door Entry
15380	B/C	3,150 SF	\$16.00	30 Days	2,078 SF Warehouse 1,072 SF A/C Office	(2) 12'x14' Bay Door (3) Standard Single Door
15410	D	1,600 SF	\$16.50	Now	Storefront with 2 Private Offices	(2) Standard Double Door Entry
15410	E	2,800 SF	\$16.50	Now	Store Front with A/C Offices 600 SF A/C Warehouse	(3) Standard Double Door Entry
15420	ABC/DE	6,000 SF	\$15.50	6.01.2026	5,000+ SF Warehouse 3 Private Offices with restrooms	(4) 12'x14' Bay Door (7) Standard Single Door

■ 615 E. Colonial Dr., Orlando, FL 32803 ■ Phone: 407.872.0209 ■ www.FCPG.com ■

Information furnished regarding the subject property is believed to be accurate, but no guarantee or representation is made. References to square footage are approximate. This offering is subject to errors, omissions, prior sale or lease or withdrawal without notice. ©2026 First Capital Property Group, Licensed Real Estate Brokers & Managers.



SUITE 1502 E: 2,400 SF



615 E. Colonial Dr., Orlando, FL 32803 Phone: 407.872.0209 www.FCPG.com

Information furnished regarding the subject property is believed to be accurate, but no guarantee or representation is made. References to square footage are approximate. This offering is subject to errors, omissions, prior sale or lease or withdrawal without notice. ©2026 First Capital Property Group, Licensed Real Estate Brokers & Managers.

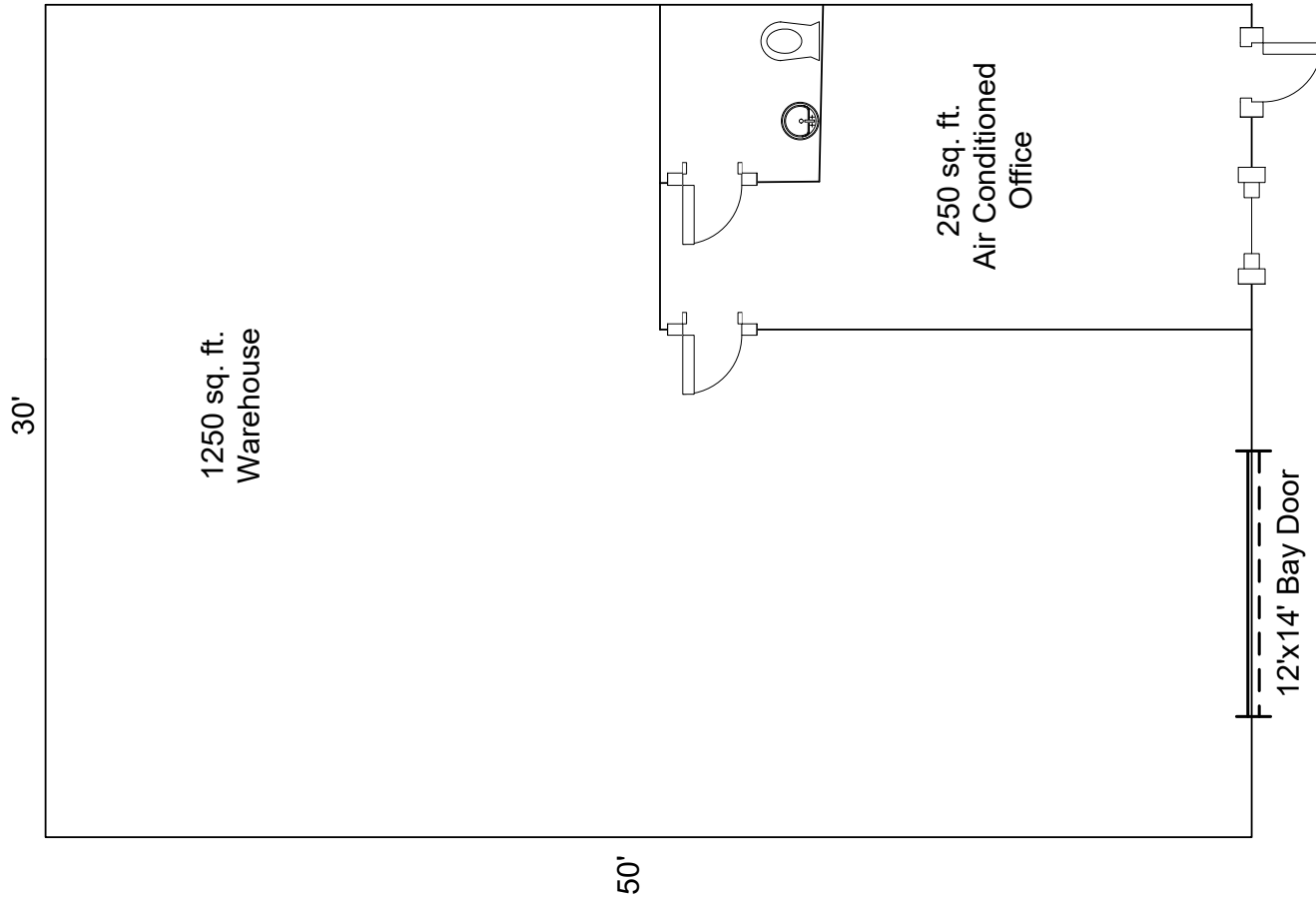
SUITE 1502 E: 2,400 SF



■ 615 E. Colonial Dr., Orlando, FL 32803 ■ Phone: 407.872.0209 ■ www.FCPG.com ■

Information furnished regarding the subject property is believed to be accurate, but no guarantee or representation is made. References to square footage are approximate. This offering is subject to errors, omissions, prior sale or lease or withdrawal without notice. ©2026 First Capital Property Group, Licensed Real Estate Brokers & Managers.

SUITE 1504 C: 1,500 SF



615 E. Colonial Dr., Orlando, FL 32803 Phone: 407.872.0209 www.FCPG.com

Information furnished regarding the subject property is believed to be accurate, but no guarantee or representation is made. References to square footage are approximate. This offering is subject to errors, omissions, prior sale or lease or withdrawal without notice. ©2026 First Capital Property Group, Licensed Real Estate Brokers & Managers.

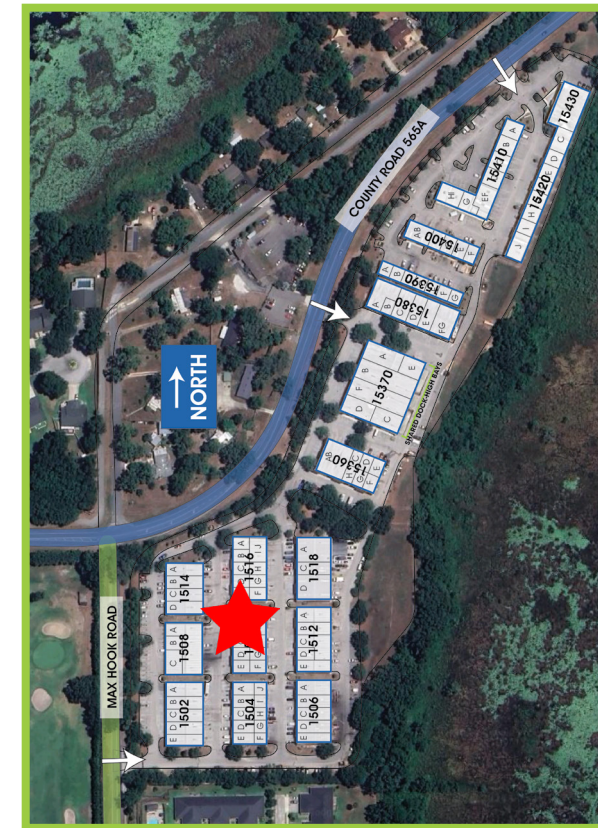
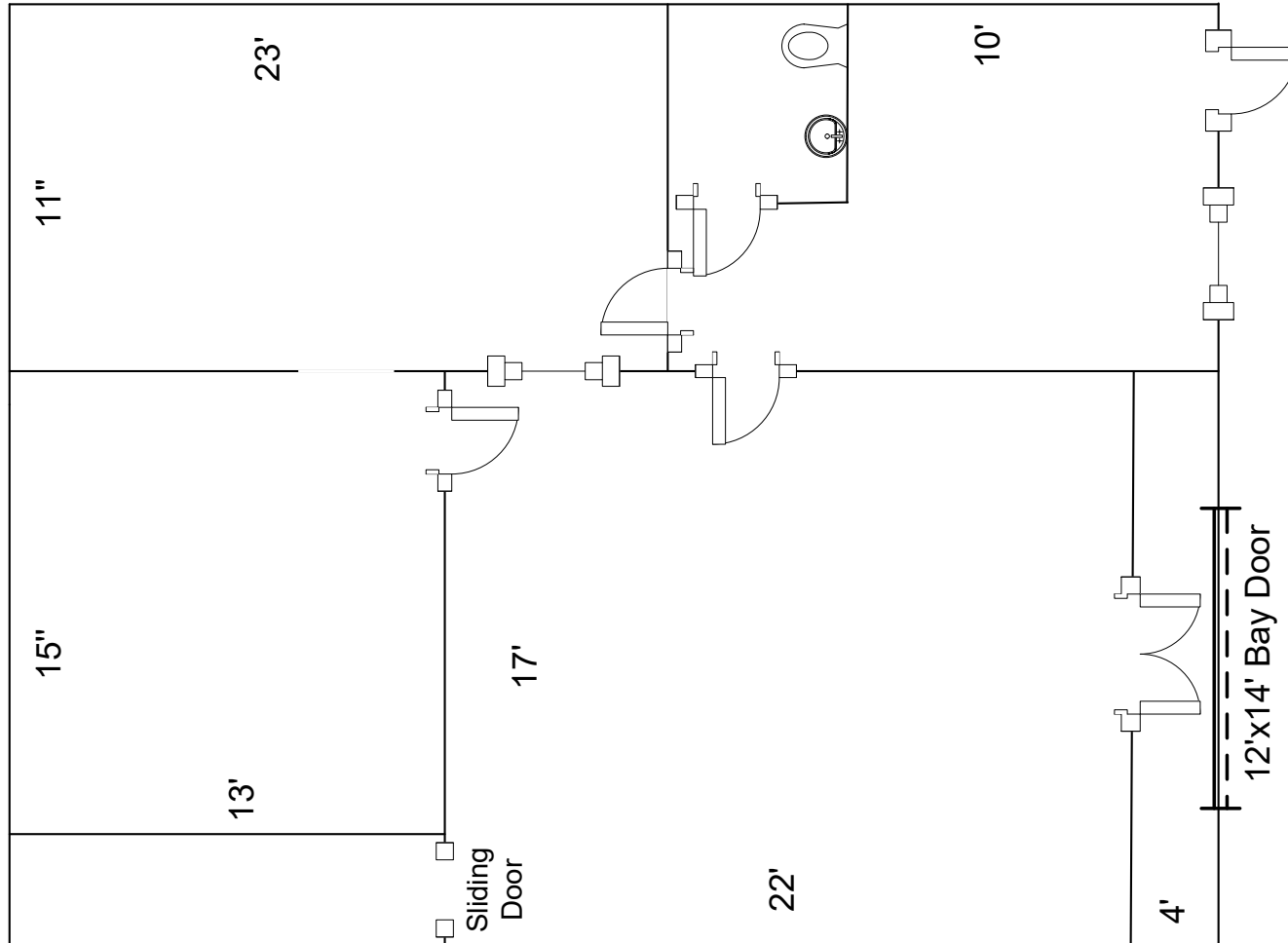
SUITE 1504 C: 1,500 SF



■ 615 E. Colonial Dr., Orlando, FL 32803 ■ Phone: 407.872.0209 ■ www.FCPG.com ■

Information furnished regarding the subject property is believed to be accurate, but no guarantee or representation is made. References to square footage are approximate. This offering is subject to errors, omissions, prior sale or lease or withdrawal without notice. ©2026 First Capital Property Group, Licensed Real Estate Brokers & Managers.

SUITE 1510 A: 1,200 SF



615 E. Colonial Dr., Orlando, FL 32803 Phone: 407.872.0209 www.FCPG.com

Information furnished regarding the subject property is believed to be accurate, but no guarantee or representation is made. References to square footage are approximate. This offering is subject to errors, omissions, prior sale or lease or withdrawal without notice. ©2026 First Capital Property Group, Licensed Real Estate Brokers & Managers.



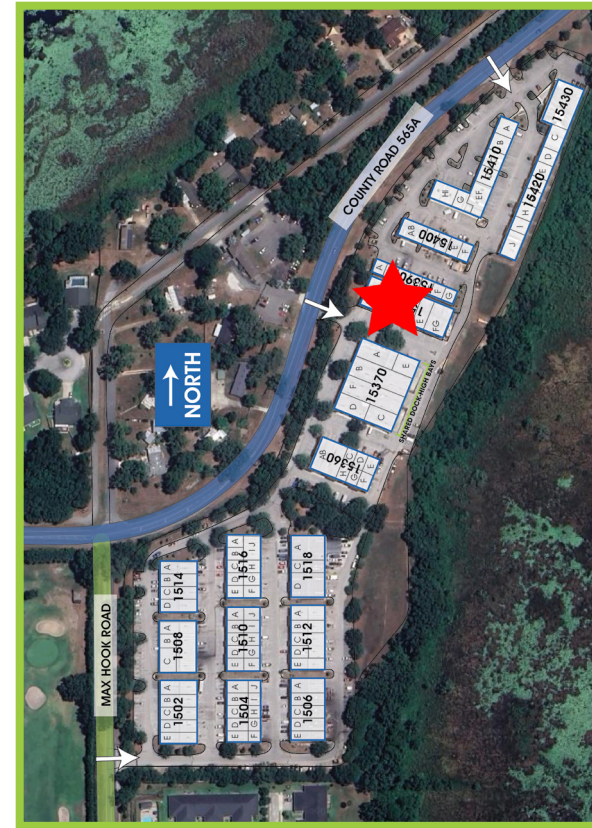
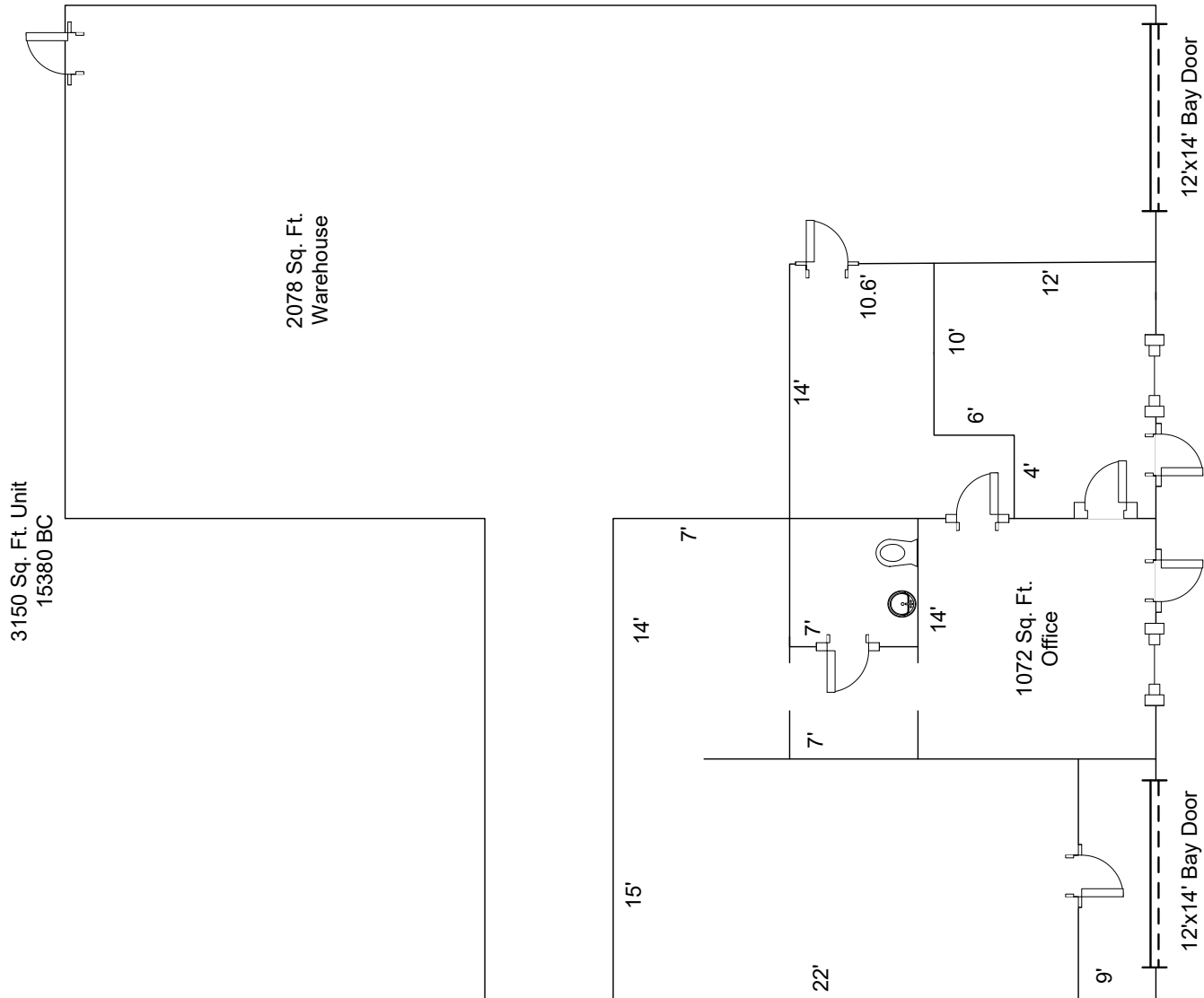
SUITE 1510 A: 1,200 SF



■ 615 E. Colonial Dr., Orlando, FL 32803 ■ Phone: 407.872.0209 ■ www.FCPG.com ■

Information furnished regarding the subject property is believed to be accurate, but no guarantee or representation is made. References to square footage are approximate. This offering is subject to errors, omissions, prior sale or lease or withdrawal without notice. ©2026 First Capital Property Group, Licensed Real Estate Brokers & Managers.

SUITE 15380 B/C: 3,150 SF

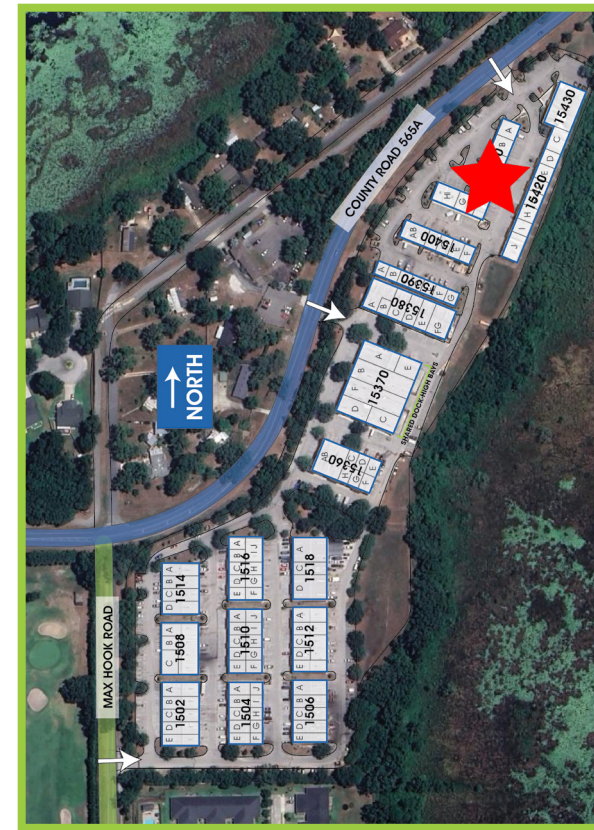
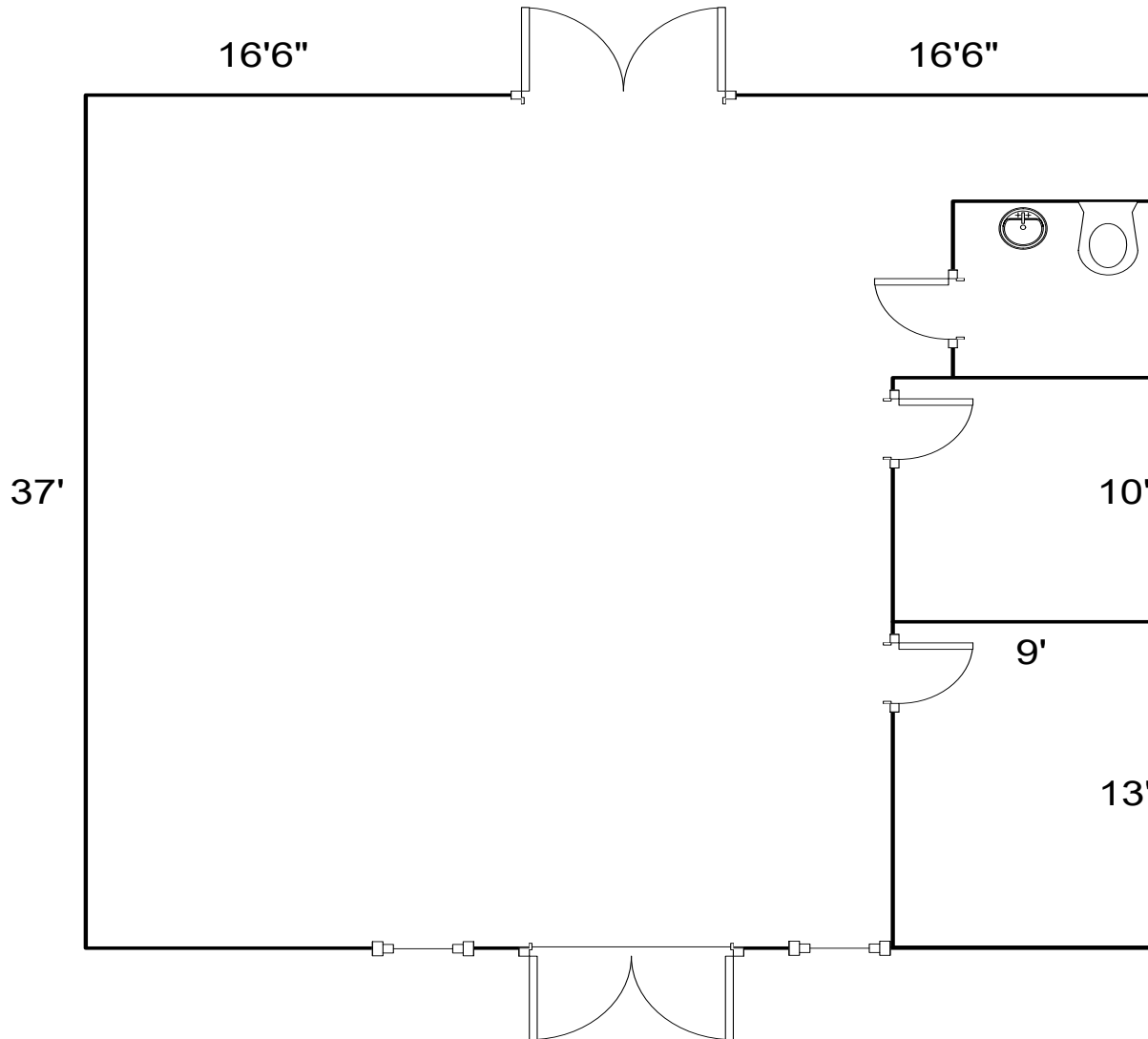


615 E. Colonial Dr., Orlando, FL 32803 Phone: 407.872.0209 www.FCPG.com

Information furnished regarding the subject property is believed to be accurate, but no guarantee or representation is made. References to square footage are approximate. This offering is subject to errors, omissions, prior sale or lease or withdrawal without notice. ©2026 First Capital Property Group, Licensed Real Estate Brokers & Managers.



SUITE 15410 D: 1,600 SF



615 E. Colonial Dr., Orlando, FL 32803 Phone: 407.872.0209 www.FCPG.com

Information furnished regarding the subject property is believed to be accurate, but no guarantee or representation is made. References to square footage are approximate. This offering is subject to errors, omissions, prior sale or lease or withdrawal without notice. ©2026 First Capital Property Group, Licensed Real Estate Brokers & Managers.

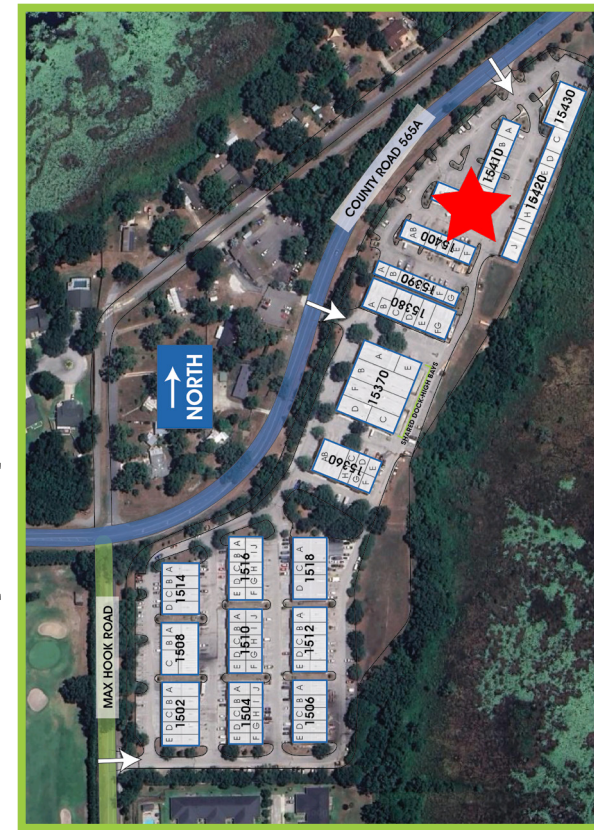
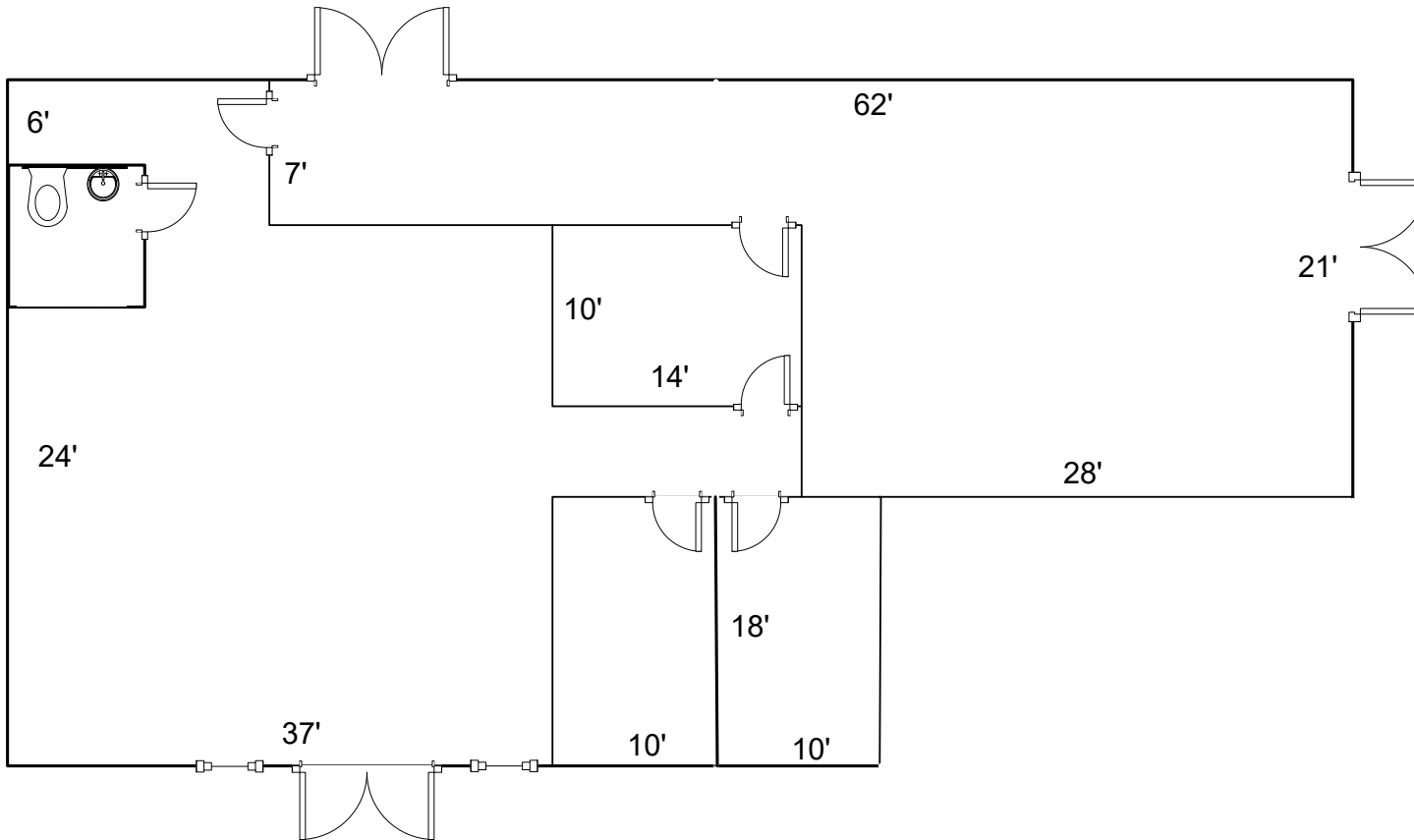
SUITE 15410 D: 1,600 SF



■ 615 E. Colonial Dr., Orlando, FL 32803 ■ Phone: 407.872.0209 ■ www.FCPG.com ■

Information furnished regarding the subject property is believed to be accurate, but no guarantee or representation is made. References to square footage are approximate. This offering is subject to errors, omissions, prior sale or lease or withdrawal without notice. ©2026 First Capital Property Group, Licensed Real Estate Brokers & Managers.

SUITE 15410 E: 2,800 SF



■ 615 E. Colonial Dr., Orlando, FL 32803 ■ Phone: 407.872.0209 ■ www.FCPG.com ■

Information furnished regarding the subject property is believed to be accurate, but no guarantee or representation is made. References to square footage are approximate. This offering is subject to errors, omissions, prior sale or lease or withdrawal without notice. ©2026 First Capital Property Group, Licensed Real Estate Brokers & Managers.

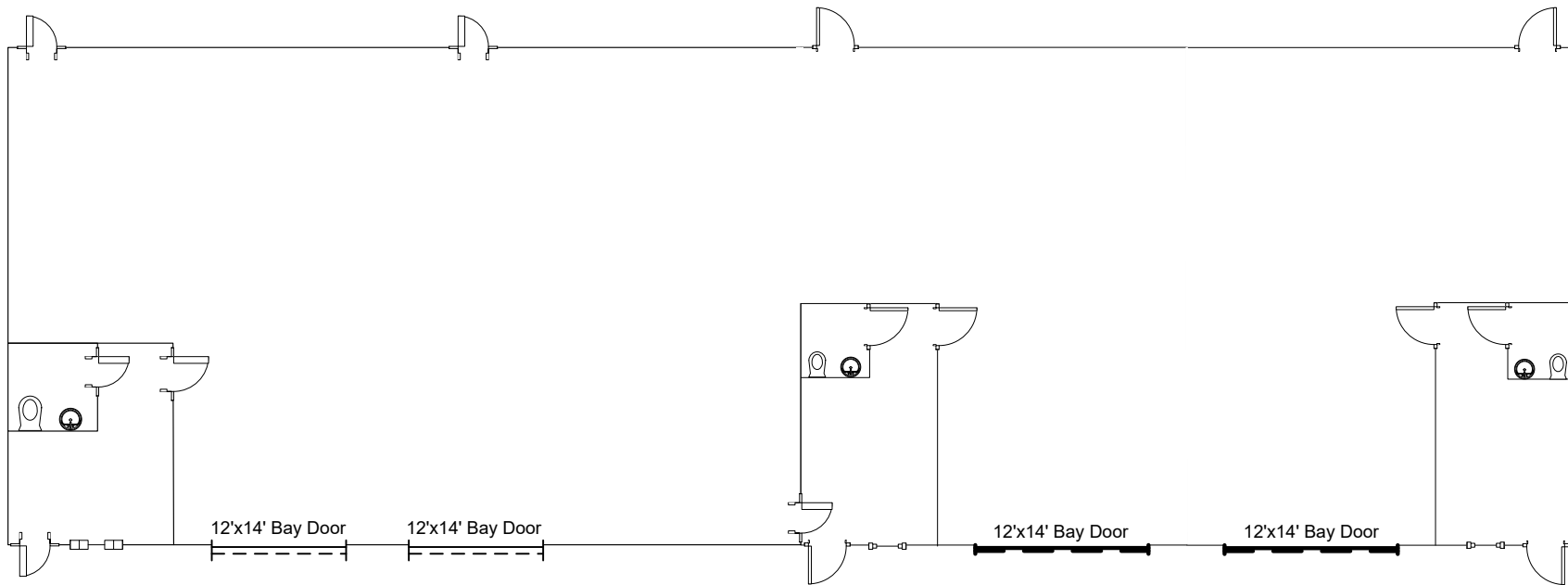
SUITE 15410 E: 2,800 SF



■ 615 E. Colonial Dr., Orlando, FL 32803 ■ Phone: 407.872.0209 ■ www.FCPG.com ■

Information furnished regarding the subject property is believed to be accurate, but no guarantee or representation is made. References to square footage are approximate. This offering is subject to errors, omissions, prior sale or lease or withdrawal without notice. ©2026 First Capital Property Group, Licensed Real Estate Brokers & Managers.

SUITE 15420 ABC/DE: 6,000 SF



■ 615 E. Colonial Dr., Orlando, FL 32803 ■ Phone: 407.872.0209 ■ www.FCPG.com ■

Information furnished regarding the subject property is believed to be accurate, but no guarantee or representation is made. References to square footage are approximate. This offering is subject to errors, omissions, prior sale or lease or withdrawal without notice. ©2026 First Capital Property Group, Licensed Real Estate Brokers & Managers.