

6161 SANTA MONICA BLVD.

3,047 SF GROUND FLOOR RETAIL/OFFICE IN HOLLYWOOD



JARED SWEDELSON

Senior Vice President
d: 818-742-1632
m: 818-644-7597
jswedelson@naicapital.com
Cal DRE Lic #02105146

NAI CAPITAL - WEST LA

11550 Santa Monica Blvd., Suite 1550
Los Angeles, CA 90025
d: 310-806-6100
f: 310-806-6101
www.naicapital.com

Digitally altered image, original at naicapital.com

NAI Capital
COMMERCIAL REAL ESTATE SERVICES, WORLDWIDE

Building Details



Lease Rate

\$2.50/SF NNN

Available

Suite 102: 3,047 SF

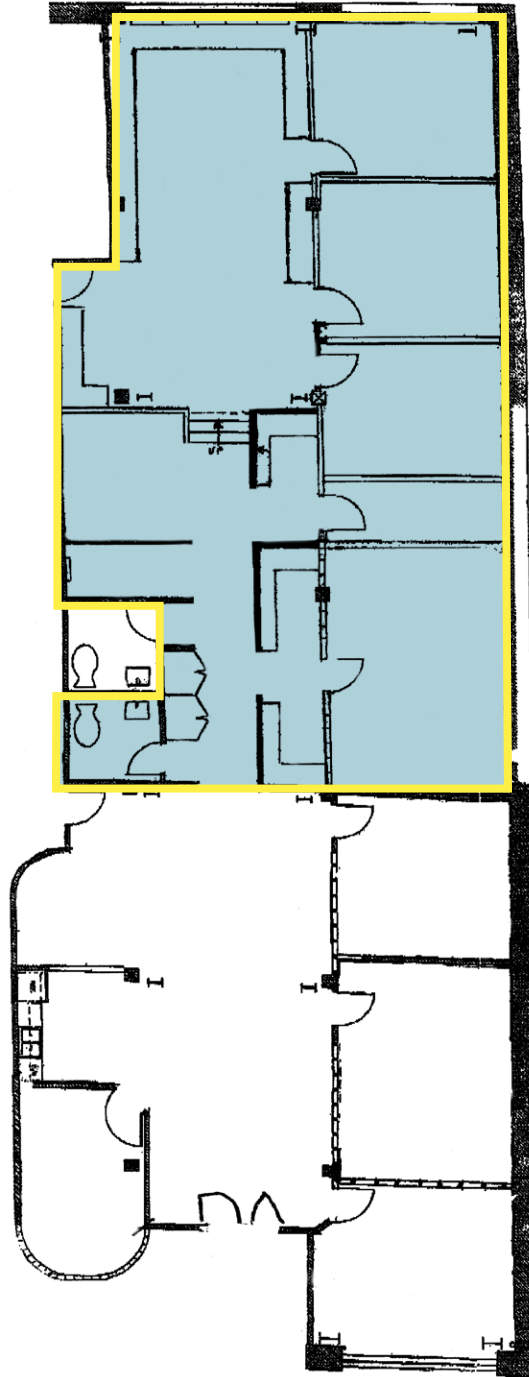
Parking

3 spaces

Space Features:

- 4 offices
- 12-16 ft ceilings
- Display area
- Kitchenette
- Private restroom

Floor Plan



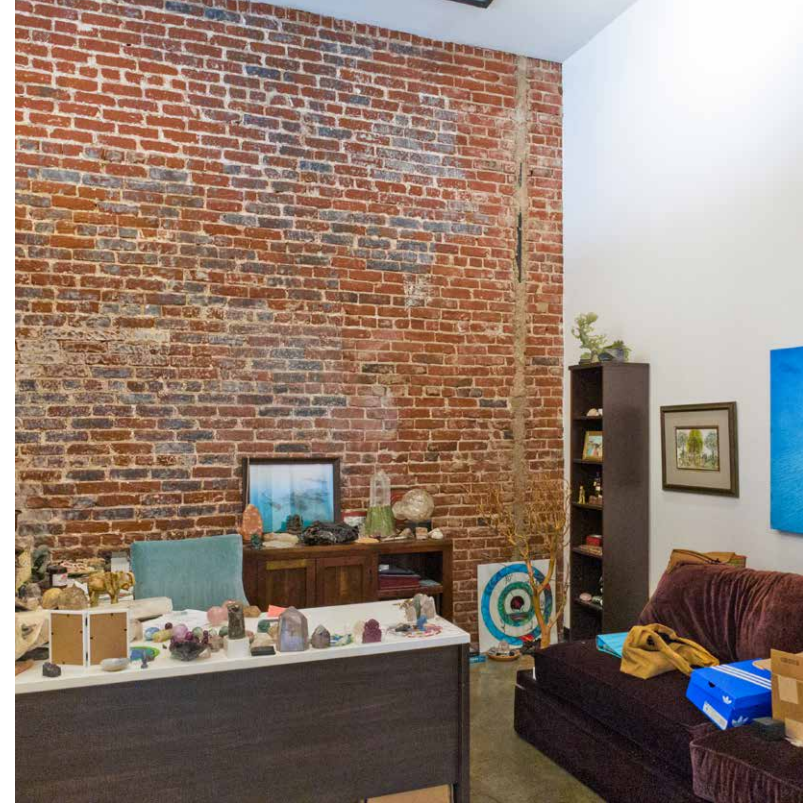
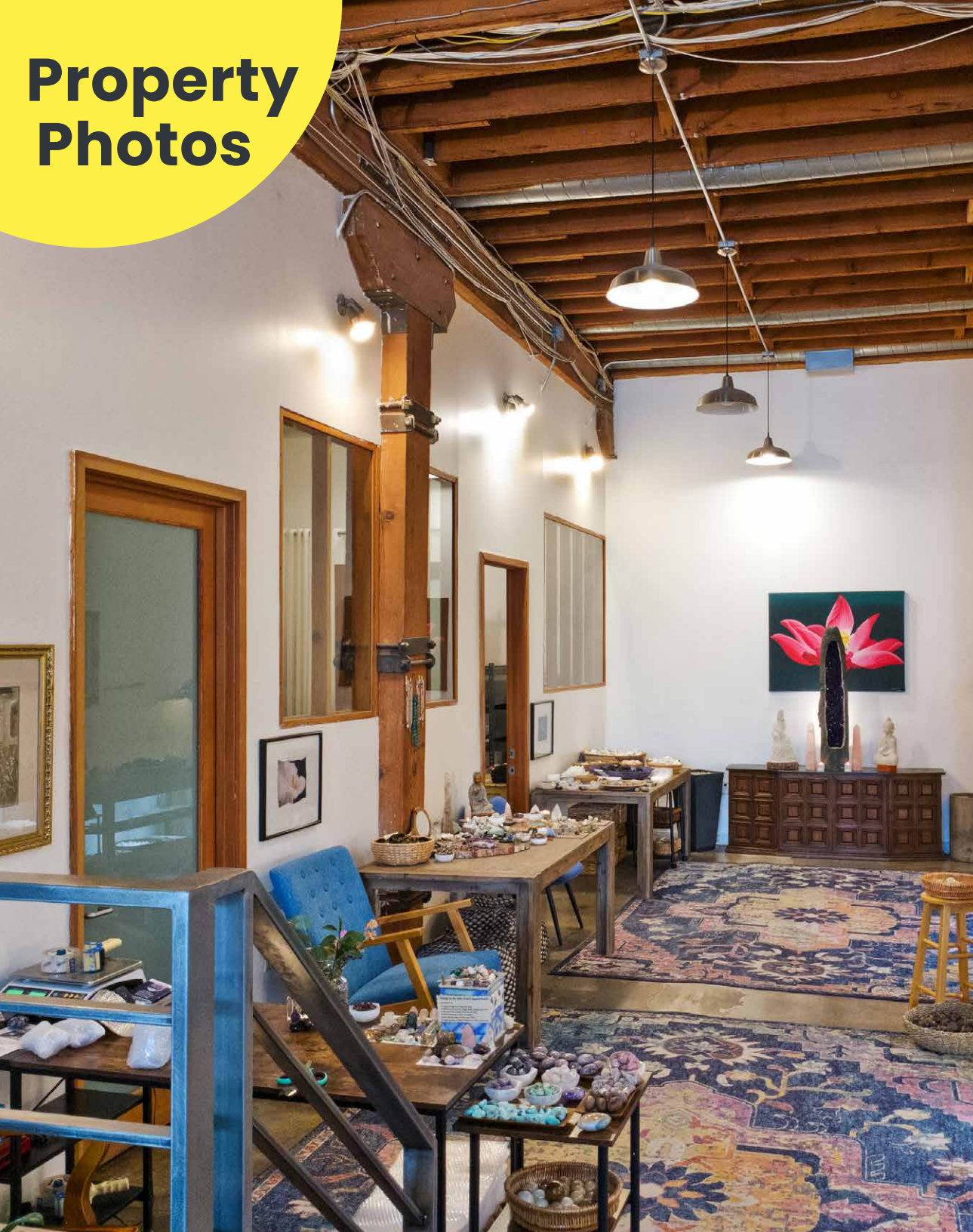
Property Photos



Property Photos



Property Photos



Retail Map

WALK SCORE
92

TRANSIT SCORE
61

BIKE SCORE
74

PUMA

THE GODFREY
HOTEL HOLLYWOOD

NETFLIX

ARC LIGHT
CINEMAS

SUNSET
MEDIA CENTER

COLUMBIA SQUARE
LIVING

NeueHouse

Emerson
COLLEGE

NETFLIX

Sunset
Studios

HOLLYWOOD

SITE

HOLLYWOOD
Production Center

N EL CENTRO AVE

44,938ATC

SANTA MONICA BLVD



Contact Info

JARED SWEDELSON
Senior Vice President
d: 818-742-1632
m: 818-644-7597
jswedelson@naicapital.com
Cal DRE Lic #02105146

NAI CAPITAL - WEST LOS ANGELES
11550 Santa Monica Blvd., Suite 1550
Los Angeles, CA 90025
d: 310-806-6100
f: 310-806-6101
www.naicapital.com



Digitally altered image, original at naicapital.com

©NAI Capital Commercial, Inc. Content in this document may include AI generated or altered text, images and/or analysis. No warranty, express or implied, is made as to the accuracy of the information contained herein. This information is submitted subject to errors, omissions, change of price, rental or other conditions, withdrawal without notice, and is subject to any special listing conditions imposed by our principals. Cooperating brokers, buyers, tenants and other parties who receive this document should not rely on it, but should use it as a starting point of analysis, and should independently confirm the accuracy of the information contained herein through a due diligence review of the books, records, files and documents that constitute reliable sources of the information described herein. Unedited images viewable at naicapital.com | Cal DRE Lic #02130474

NAI Capital
COMMERCIAL REAL ESTATE SERVICES, WORLDWIDE