



Regus 3000, 3000 Aviator Way, Manchester, M22  
5TG

---

Serviced office spaces TO LET

- Airport Location
- City/Town Centre
- Wheelchair Accessible
- Restaurant
- Common Areas
- Business Park Location
- Major Transport Links
- [///postings.toasters.rocker](http://postings.toasters.rocker)

## Summary

<b>Available Size</b>	323 to 807 sq ft
<b>Rent</b>	£18.17 per sq ft
<b>Business Rates</b>	Upon Enquiry
<b>EPC Rating</b>	D

## Description

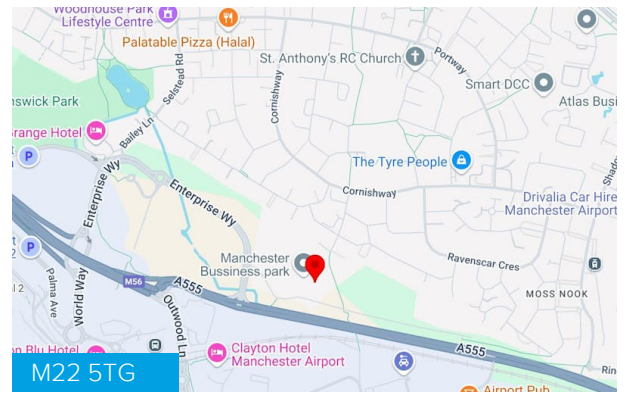
Fly high when you make a base at our Manchester Airport offices. The modern office building has an impressive glass front, 18 modern meeting rooms, sandwich bar and a videoconferencing studio.

## Location

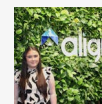
3000 Aviator Was is located in the South of the city of Manchester along the A555. Transport links are excellent with Manchester Airport bus station , Manchester Airport tram stop, and train station all located 0.4-miles away in the airport, providing access in and around the city with bars and restaurants within walking distance.

The A555 can be accessed out the front of the site which connects to the M6 and also the A6, providing access to the M1 North and South, offering wider linkages to large cities such as Leeds, Edinburgh and London.

Manchester Airport is 0.4 miles away from the site.



## Viewing & Further Information



**Caitlin Parker**

01609 797 330

caitlin.parker@alignpropertypartners.co.uk

**View Properties Here**

**[www.alignpropertypartners.co.uk](http://www.alignpropertypartners.co.uk)**

