

121 ROCKVILLE PIKE

Rockville, MD 20850

Office For Lease

Up to 183,704 SF



Leasing Information:
301.304.8300

Paul "Rocky" Kern **Richard Coppola**
301.304.8399 301.304.8405
pkern@lpc.com rcoppola@lpc.com

Lincoln

1101 Wootton Pkwy
Suite 410
Rockville, MD 20854

www.lpc.com

121 ROCKVILLE PIKE

Rockville, MD 20850

Office For Lease

Up to 183,704 SF



Property Highlights

- New ownership and property management
- Class A, LEED Platinum-certified building
- Modern, high-end finishes throughout
- Internal stairwell connecting Floors 4 - 9
- 9-foot finished ceilings
- Outdoor terrace on the 4th Floor
- Convenient on-site parking garage, approximately 371 spaces (1.88 / 1,000 SF)
- On-site restaurant (Kabuto Hibachi & Sushi)
- Short walk to Rockville Town Square
- Directly across from Rockville Metro Station (Red Line) and MARC train access

Availabilities

R200 (Retail)

4th Floor

5th Floor

6th Floor

7th Floor

8th Floor

9th Floor

10th Floor

11th Floor

SF

2,531 SF

5,000 - 22,963 SF

22,963 SF

22,963 SF

22,963 SF

22,963 SF

22,963 SF

22,963 SF

22,963 SF

Date Available

Immediately

Immediately

Immediately

Immediately

Immediately

Immediately

Immediately

Immediately

Immediately

Paul "Rocky" Kern

301.304.8399
pkern@lpc.com

Richard Coppola

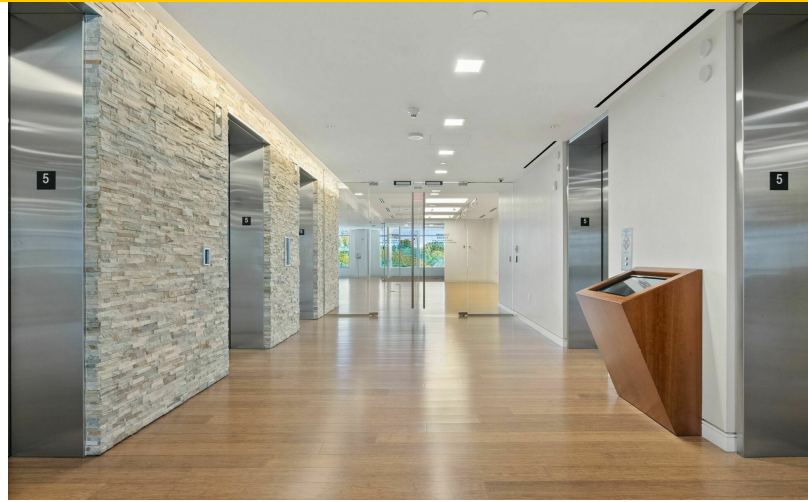
301.304.8405
rcoppola@lpc.com

Lincoln

121 ROCKVILLE PIKE

Rockville, MD 20850

Property Amenities



Paul "Rocky" Kern

301.304.8399
pkern@lpc.com

Richard Coppola

301.304.8405
rcoppola@lpc.com

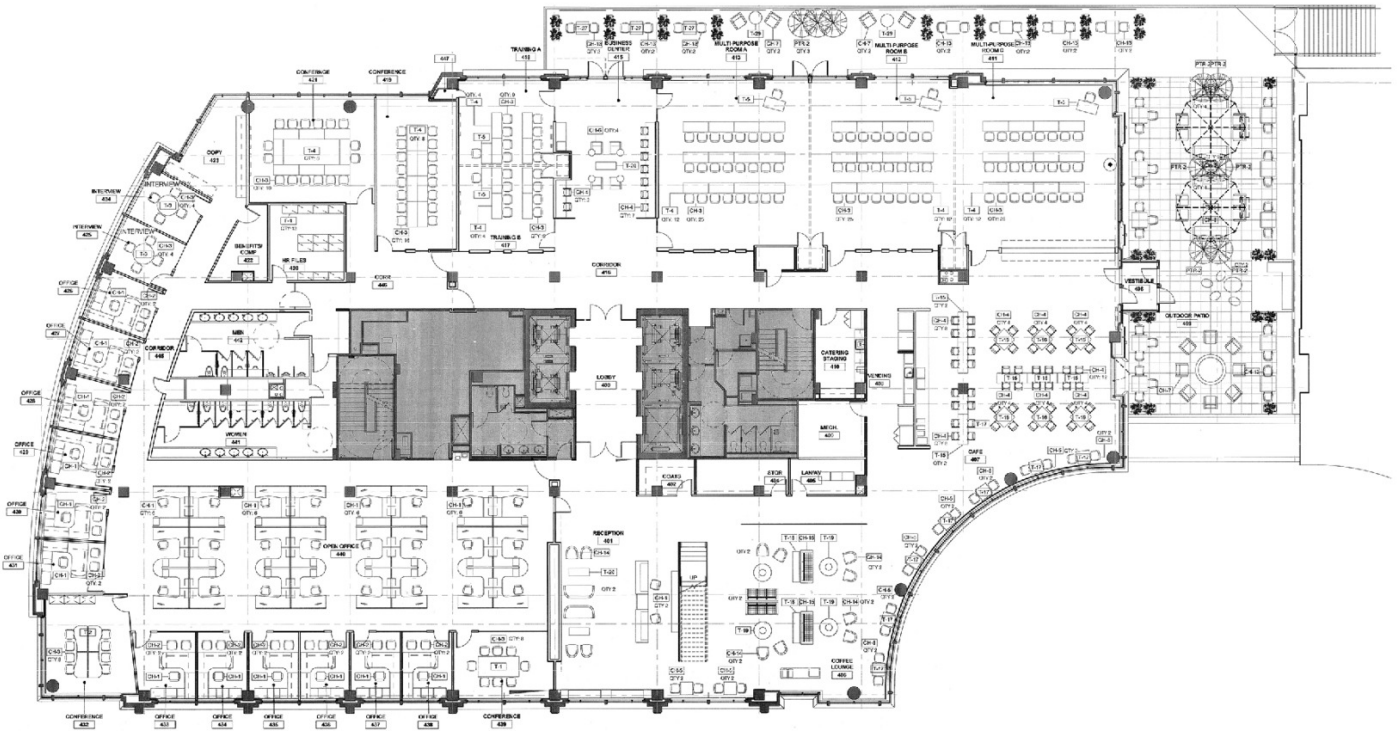
Lincoln

121 ROCKVILLE PIKE

Rockville, MD 20850

4th Floor

5,000 - 22,963 SF



Suite

Size

Description

4th Floor

5,000 - 22,963 SF

Full Floor Opportunity. Contiguous 183,704 SF block.

Paul "Rocky" Kern

Richard Coppola

301.304.8399
pkern@lpc.com

301.304.8405
rcoppola@lpc.com

Lincoln

121 ROCKVILLE PIKE

Rockville, MD 20850

5th Floor

22,963 SF



Suite

Size

Description

5th Floor

22,963 SF

Full Floor Opportunity. Contiguous 183,704 SF block.

Paul "Rocky" Kern

301.304.8399
pkern@lpc.com

Richard Coppola

301.304.8405
rcoppola@lpc.com

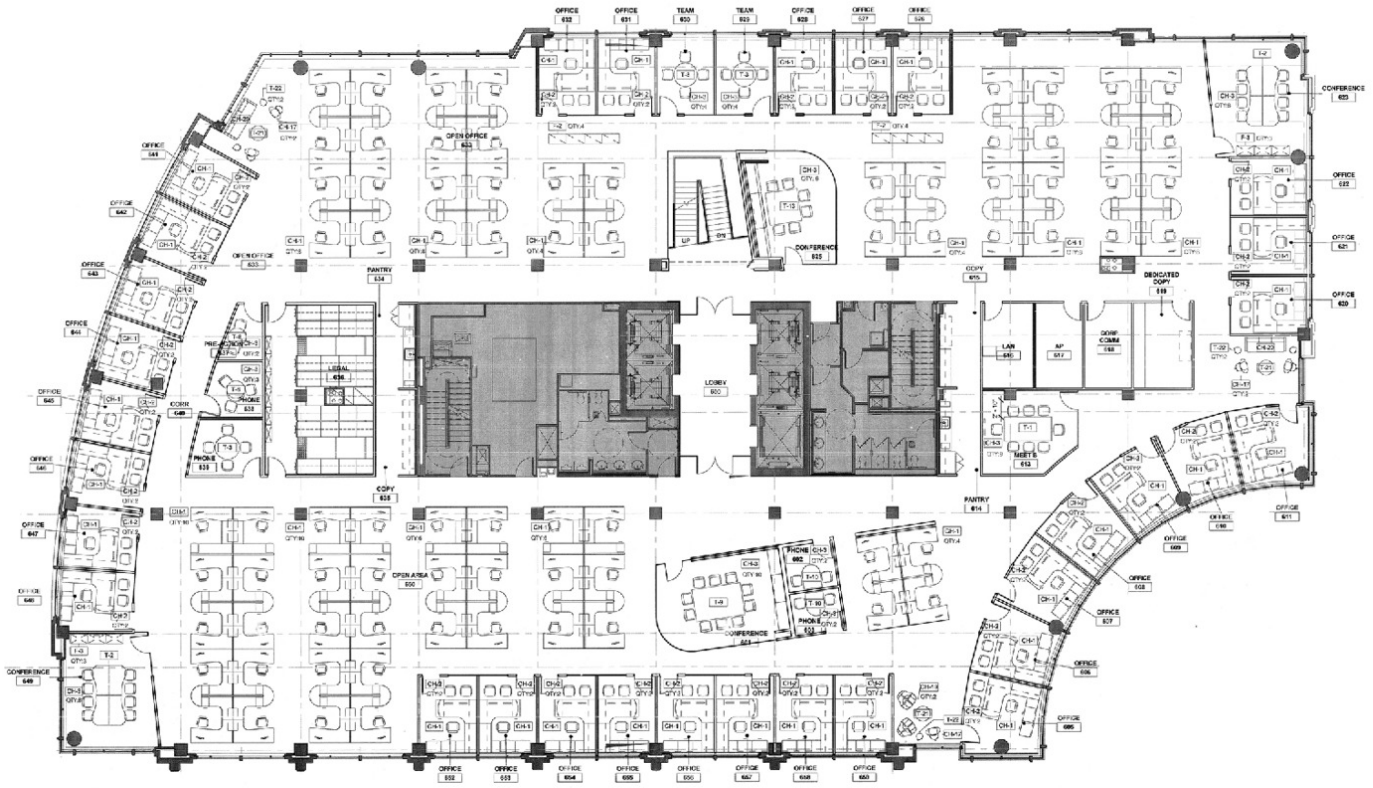
Lincoln

121 ROCKVILLE PIKE

Rockville, MD 20850

6th Floor

22,963 SF



Suite

Size

Description

6th Floor

22,963 SF

Full Floor Opportunity. Contiguous 183,704 SF block.

Paul "Rocky" Kern

301.304.8399
pkern@lpc.com

Richard Coppola

301.304.8405
rcoppola@lpc.com

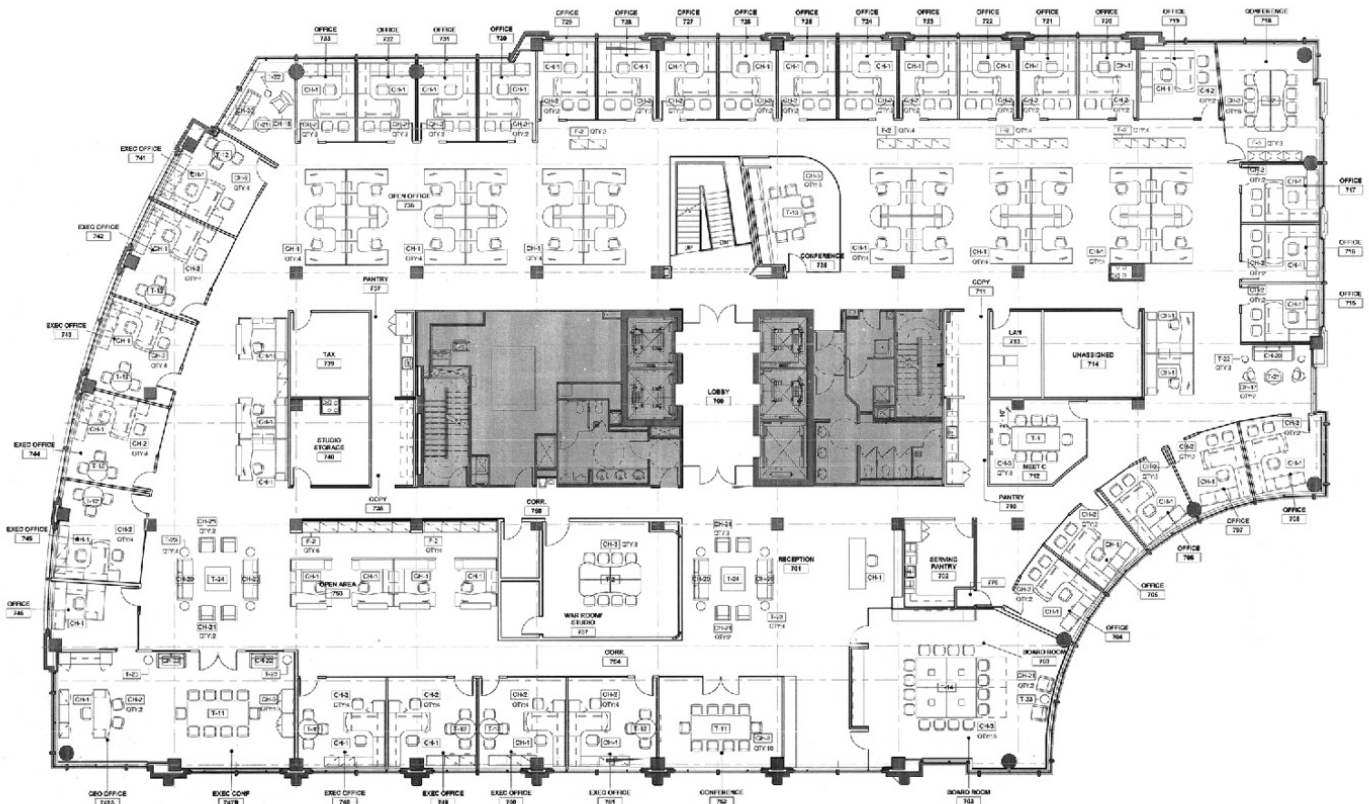
Lincoln

121 ROCKVILLE PIKE

Rockville, MD 20850

7th Floor

22,963 SF



Suite	Size	Description
7th Floor	22,963 SF	Full Floor Opportunity. Contiguous 183,704 SF block.

Paul "Rocky" Kern Richard Coppola

301.304.8399
pkern@lpc.com

301.304.8405
rcoppola@lpc.com

Lincoln

121 ROCKVILLE PIKE

Rockville, MD 20850

8th Floor

22,963 SF



Suite	Size	Description
8th Floor	22,963 SF	Full Floor Opportunity. Contiguous 183,704 SF block.

Paul "Rocky" Kern **Richard Coppola**
301.304.8399 301.304.8405
pkern@lpc.com rcoppola@lpc.com

Lincoln

121 ROCKVILLE PIKE

Rockville, MD 20850

9th Floor

22,963 SF



Suite	Size	Description
9th Floor	22,963 SF	Full Floor Opportunity. Contiguous 183,704 SF block.

Paul "Rocky" Kern **Richard Coppola**
301.304.8399 301.304.8405
pkern@lpc.com rcoppola@lpc.com

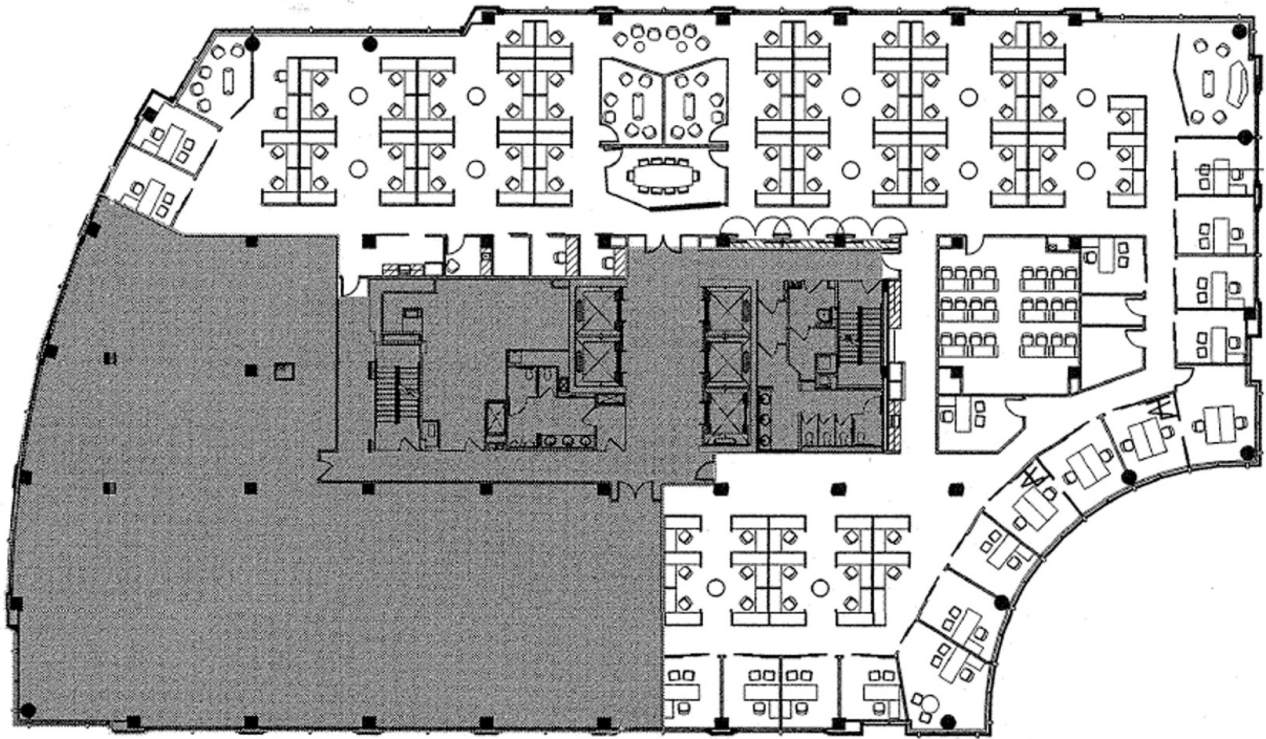
Lincoln

121 ROCKVILLE PIKE

Rockville, MD 20850

10th Floor

22,963 SF



Suite	Size	Description
10th Floor	22,963 SF	Full Floor Opportunity. Contiguous 183,704 SF block.

Paul "Rocky" Kern

301.304.8399
pkern@lpc.com

Richard Coppola

301.304.8405
rcoppola@lpc.com

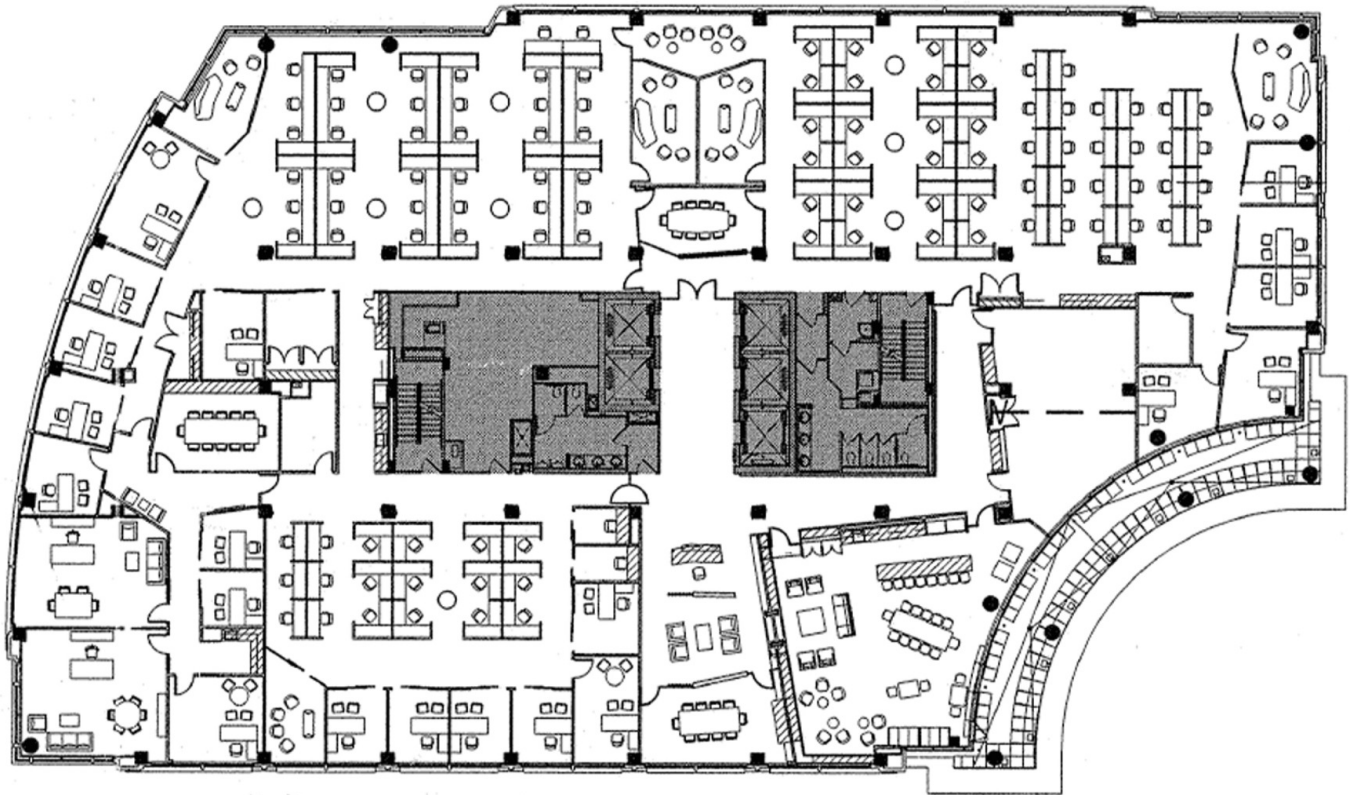
Lincoln

121 ROCKVILLE PIKE

Rockville, MD 20850

11th Floor

22,963 SF



Suite	Size	Description
11th Floor	22,963 SF	Full Floor Opportunity. Contiguous 183,704 SF block.

Paul "Rocky" Kern **Richard Coppola**

301.304.8399
pkern@lpc.com

301.304.8405
rcoppola@lpc.com

Lincoln

121 ROCKVILLE PIKE

Rockville, MD 20850

Nearby Amenities



Rockville Town Square

- REGAL
- FIRST WATCH
- Don Don Kebab
- THAI LIFE
- FIVE GUYS
- TRUIST
- Starbucks
- Panera
- B
- XO T-swirl Crepe
- XO Pho Grill
- kusshi.
- BEN & JERRY'S
- Walgreens
- EL MERCAT
- TRADER JOE'S

Paul "Rocky" Kern Richard Coppola
301.304.8399 301.304.8405
pkern@lpc.com rcoppola@lpc.com

Lincoln



121 ROCKVILLE PIKE

Rockville, MD 20850

Leasing Information:
301.304.8300

Paul "Rocky" Kern
301.304.8399
pkern@lpc.com

Richard Coppola
301.304.8405
rcoppola@lpc.com

Lincoln

1101 Wootton Pkwy
Suite 410
Rockville, MD 20854

www.lpc.com