

FOR LEASE | OFFICE - RETAIL - MEDICAL

South Redondo Beach Mixed-Use Space

1820 S. PACIFIC COAST HWY, REDONDO BEACH



NEWMARK

GEOFF LUDWIG

Exec. Managing Director
t 310-491-2077
geoff.ludwig@nrmk.com
CA RE Lic. #01232244

ERIC LASTITION

Exec. Managing Director
t 310-491-2047
eric.lastition@nrmk.com
CA RE Lic. #01119647

1820 S. PACIFIC COAST HWY, REDONDO BEACH



Prime Redondo Beach address along PCH adjacent to 98 residential units



End cap with excellent proximity to 5/,1000 subterranean parking



Proximity to abundant shopping, dining, and social activities in the Riviera Village



Irreplaceable location less than one mile to the Esplanade and Pacific Ocean



Rare small suite with prominent street signage for branding recognition on PCH



Variety of uses with mixed-use zoning plus ample parking for office/retail use





NEWMARK

1820 S. PACIFIC COAST HWY, REDONDO BEACH

Building Details

SQUARE FEET

1,030 RSF

TYPE

Office / Retail

AVAILABLE

Immediately

YEAR BUILT

2003

STORIES

One

PARKING RATIO

5.0/1,000 covered parking

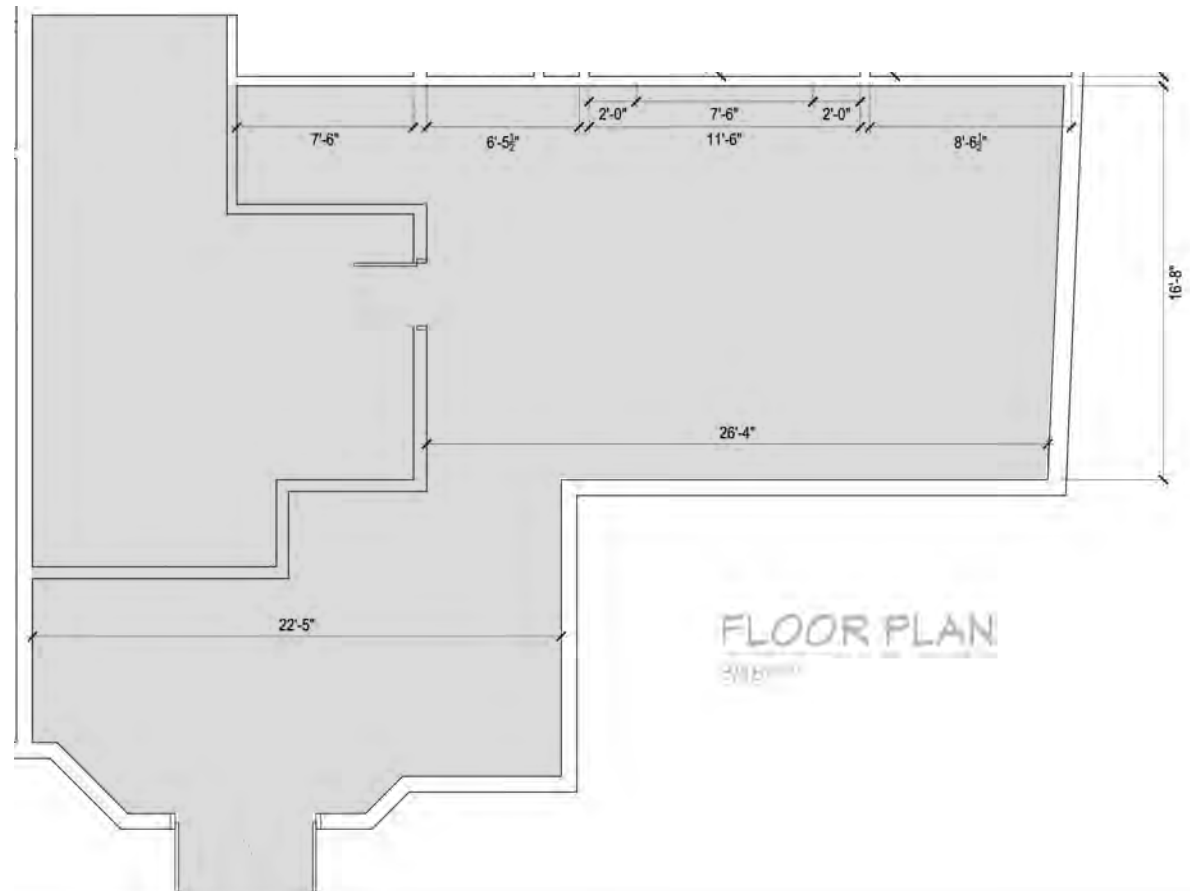
ZONING

MU-3A mixed use overlay

[Click Here for Zoning Uses](#)

LEASE RATE

\$3.50 per RSF, NNN



1820 S. PACIFIC COAST HWY, REDONDO BEACH

Local Amenities

TURQUOISE
THE HOOK & PLOW
FLYIN FIN
VILLAGE PIZZA
VIDA MODERN TAQUERIA
BLISS NAIL LOUNGE

RIVIERA HOUSE
CREME DE LA CREPE
REBEL REPUBLIC
HENNESSEY'S
ROCKIT BODY PILATES
LOCALE 90 PIZZERIA

COFFEE CARTEL
REDONDO BEACH BREWCO
GABI JAMES

YELLOW VASE
HI-FI ESPRESSO
THE CRAFTSMAN BREWS & BITES
L&L HAWAIIAN BARBECUE
PEDONE'S PIZZA
SPATHENEE WELLNESS CENTER

THE ROCKEFELLER

HT GRILL

FRIENDS OF THE VINE

LITTLE SISTER

GOOD STUFF RESTAURANT

STARBUCKS
TRADER JOE'S

THE BULL PEN

BUCA DI BEPPO

FATBURGER

ROCK 'N' BREWS

OFFSET COFFEE

BETTOLINO KITCHEN

ASAKA SUSHI

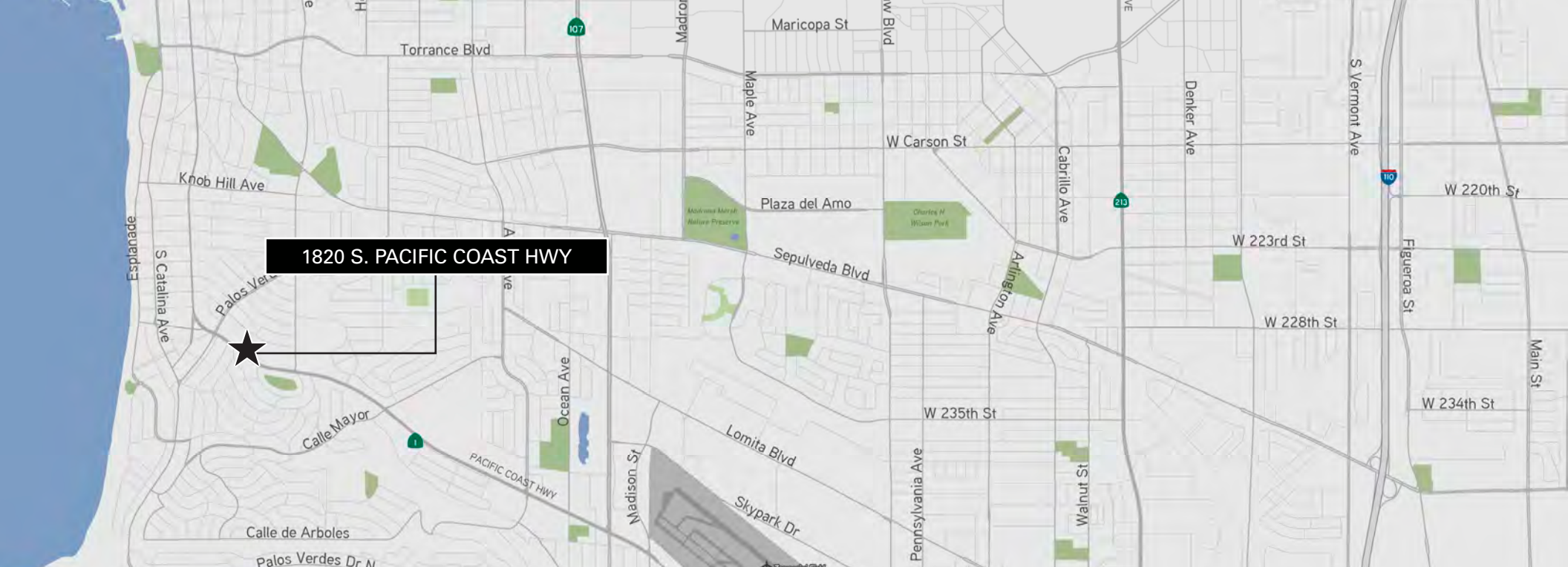
VONS

THE ORIGINAL
PANCAKE HOUSE

THE CLIENT HAIR STUDIO
MELLOW TEA STUDIO
BEACH NAILS & SPA
PACIFIC STANDARD PRIME
ORTEGA 120
PURE SMILES SOUTH BAY

1820 S. PACIFIC COAST HWY

BEST WESTERN PLUS



1820 S. PACIFIC COAST HWY, REDONDO BEACH

Contacts

GEOFF LUDWIG

Exec. Managing Director
t 310-491-2077
geoff.ludwig@nrmk.com
CA RE Lic. #01232244

ERIC LASTITION

Exec. Managing Director
t 310-491-2047
eric.lastition@nrmk.com
CA RE Lic. #01119647

Corporate License #01355491. The distributor of this communication is performing acts for which a real estate license is required. The information contained herein has been obtained from sources deemed reliable but has not been verified and no guarantee, warranty or representation, either express or implied, is made with respect to such information. Terms of sale or lease and availability are subject to change or withdrawal without notice.



NEWMARK