



QUARTERMILE TWO

2 LISTER SQUARE
EDINBURGH | EH3 9GL

25,000 sq.ft over 3 floors

WWW.QUARTERMILETWO.CO.UK

PRIME GRADE A OFFICES
WITH DIRECT ACCESS TO
OUTSTANDING GREEN SPACE



*Edinburgh
Waverley*

*The University
of Edinburgh*

*Exchange
District*



THE MEADOWS



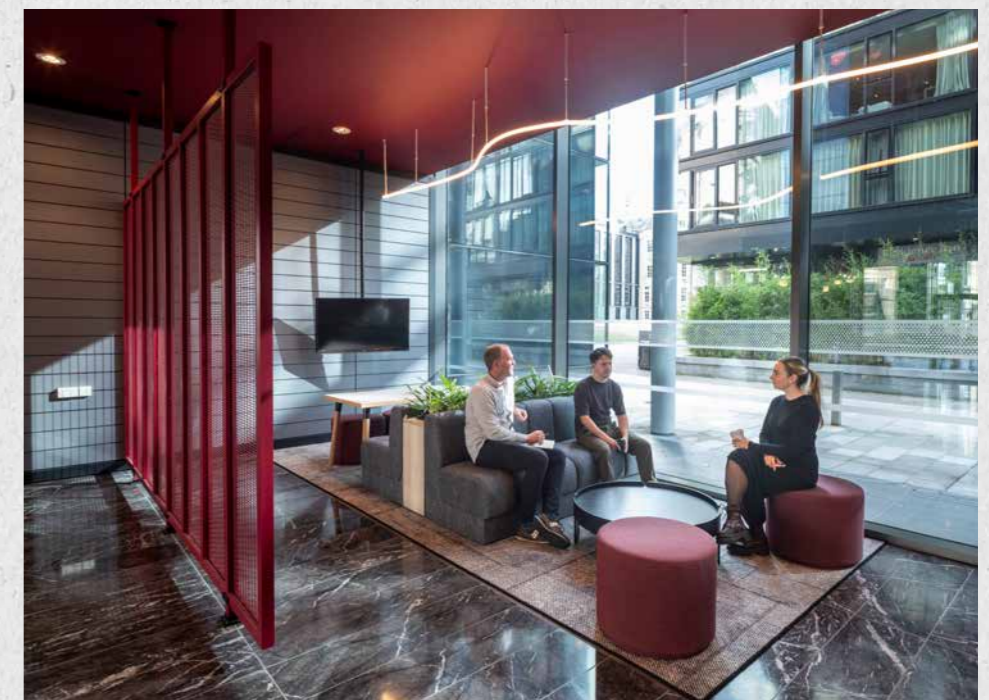
ONE OF EDINBURGH'S
MOST DISTINCTIVE
OFFICE BUILDINGS





WORKSPACE REDESIGNED...

The striking glass and steel Fosters + Partners designed office building has recently undergone a comprehensive refurbishment and provides re-designed sustainable office space with best in class wellness facilities including new showers, drying lockers and secure bicycle storage directly adjacent to the refurbished reception area.

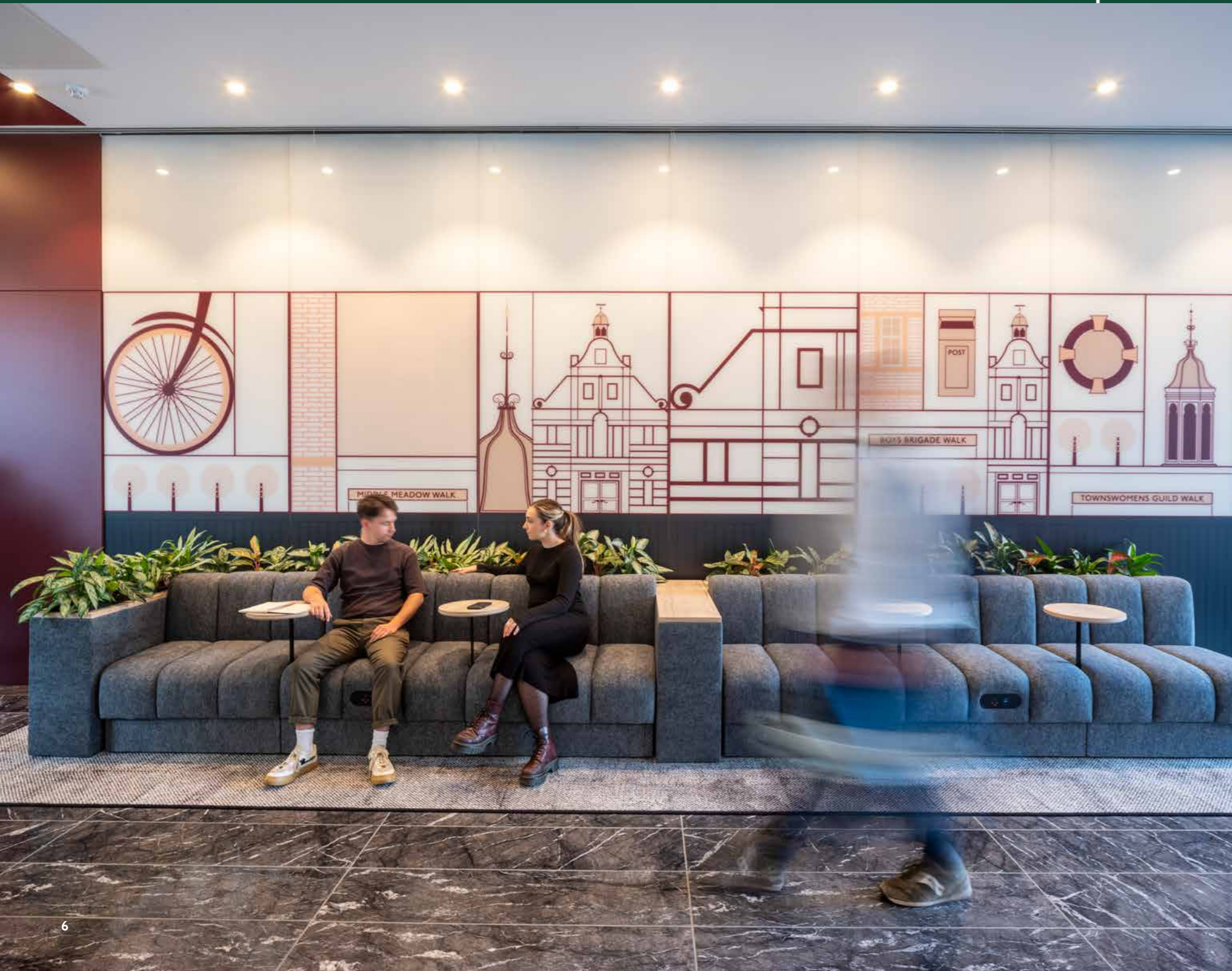


GREEN SPACES - GREEN PLACES

All available floors at Quatermile Two provide exceptionally efficient floor plates and have been refurbished to the highest quality. An environmental management system has been introduced with a programme of energy saving improvements.



SPECIFIED TO DELIVER THE BEST WORKING ENVIRONMENT



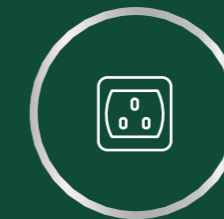
Available suites have been refurbished on an "all electric basis"



Flexible open plan office accommodation



Floor to ceiling height (raised floor to underside of beam) is 3.7m



New VRF M&E throughout



Raised access floor with 110mm clear void



Very Good BREEAM rating



Energy Performance Certificate (EPC) – A



Dedicated unisex accessible WCs and new shower facilities at ground floor level



6 car parking spaces in the basement car park with further spaces available via the operator



New cycle store at ground floor level



Spectacular balcony feature on 6th floor

SPACE TO WORK, THAT WORKS FOR YOU.

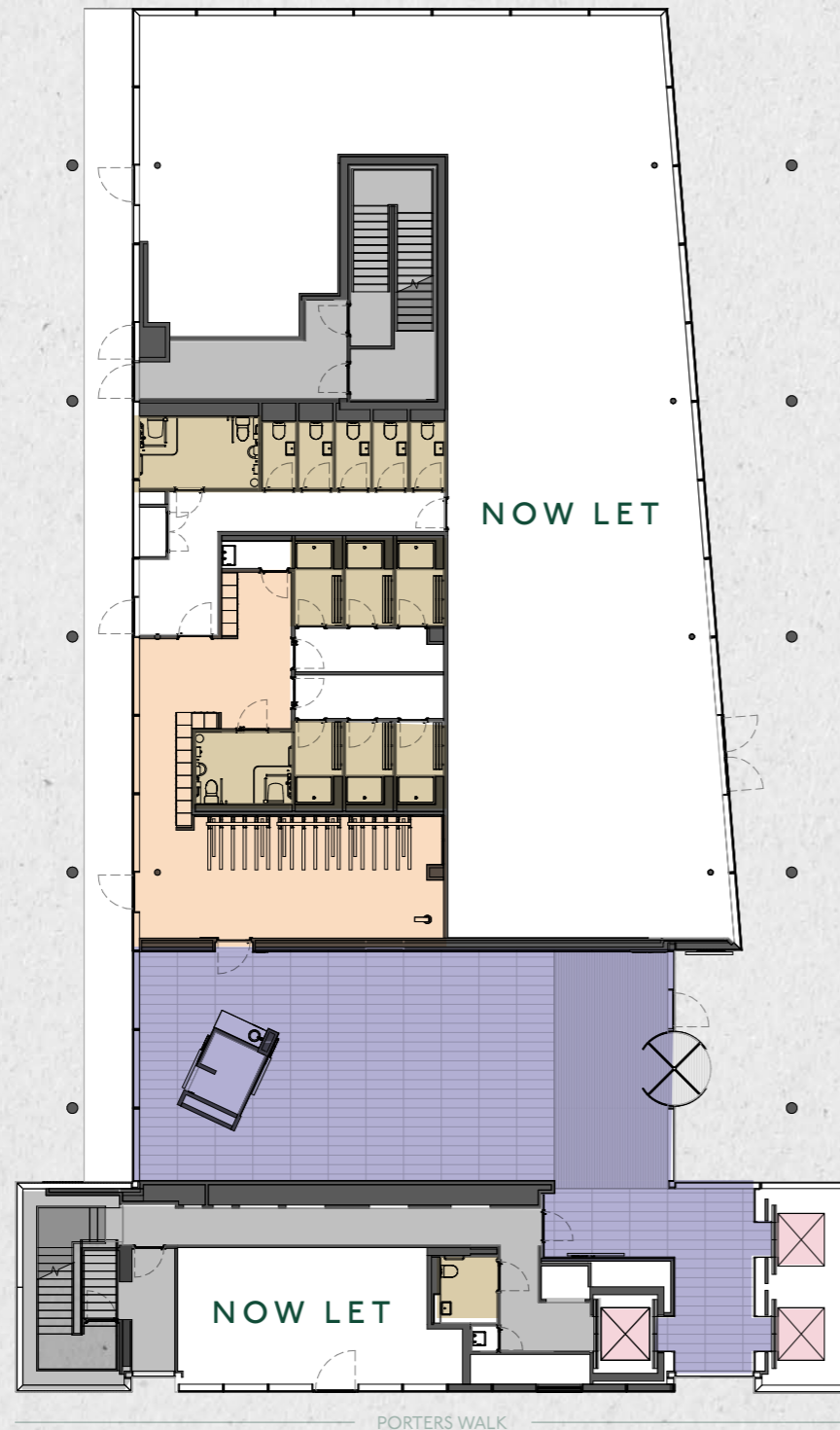
FLOOR	SQ M	SQ FT
3 rd Floor East Suite	449.00	4,833
4 th Floor	940.33	10,122
5 th Floor	940.33	10,122
TOTAL	2,329.66	25,077

KEY:

- OFFICE
- RECEPTION
- LIFT
- CYCLE STORAGE / LOCKERS
- STAIRS/CORRIDOR
- MEETING SPACE
- WC/SHOWERS
- COMMON AREA

FLOOR PLAN

GROUND FLOOR
3,337SQ FT (310.00 SQ M)

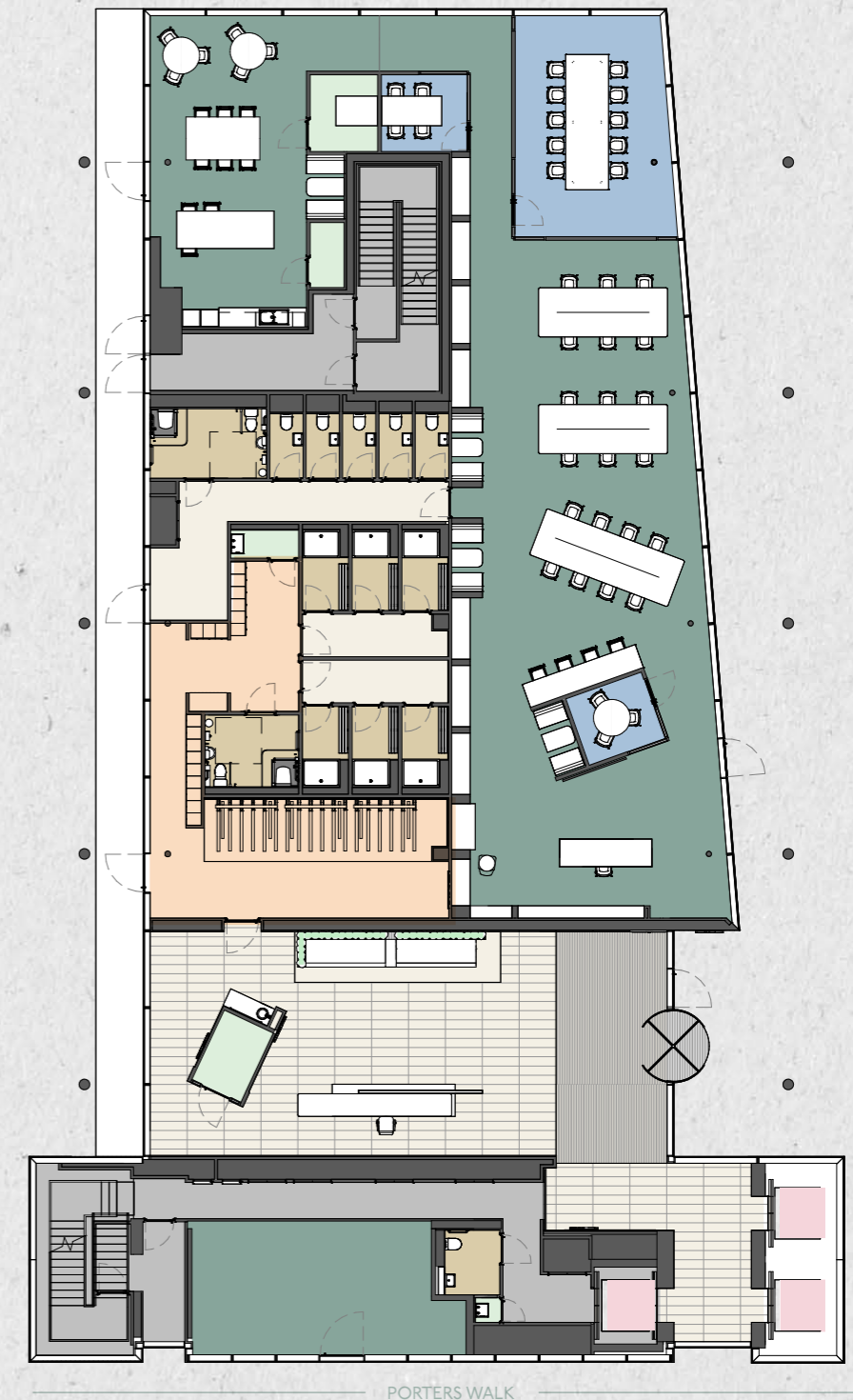


SPACE PLAN

GROUND FLOOR
3,337SQ FT (310.00 SQ M)

Number of desks – 20

Number of enclosed meeting rooms - 3



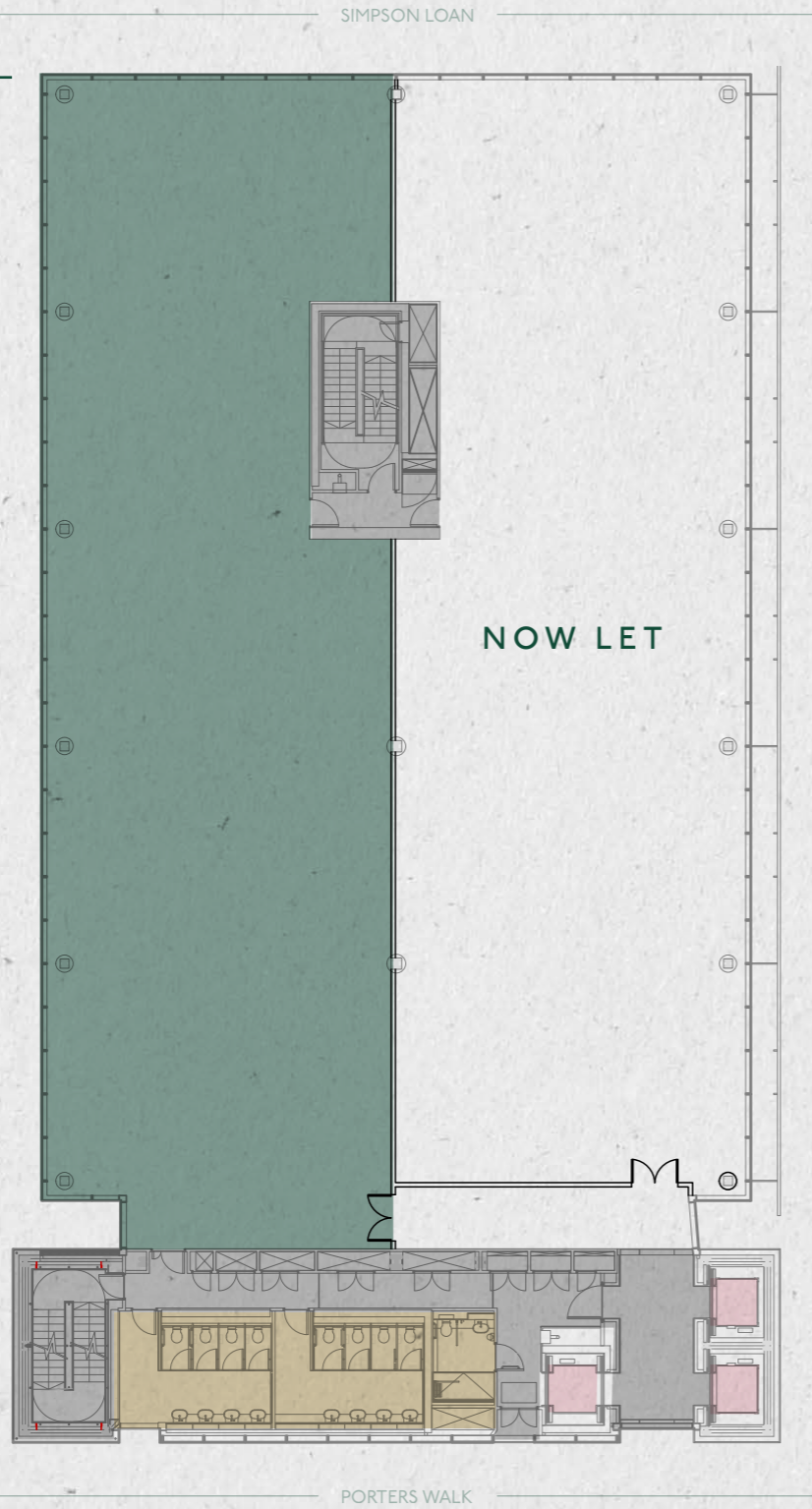
SPATIAL PLANS

KEY:

 OFFICE	 RECEPTION	 LIFT
 CYCLE STORAGE /LOCKERS	 STAIRS/CORRIDOR	 MEETING SPACE
	 WC/SHOWERS	 COMMON AREA

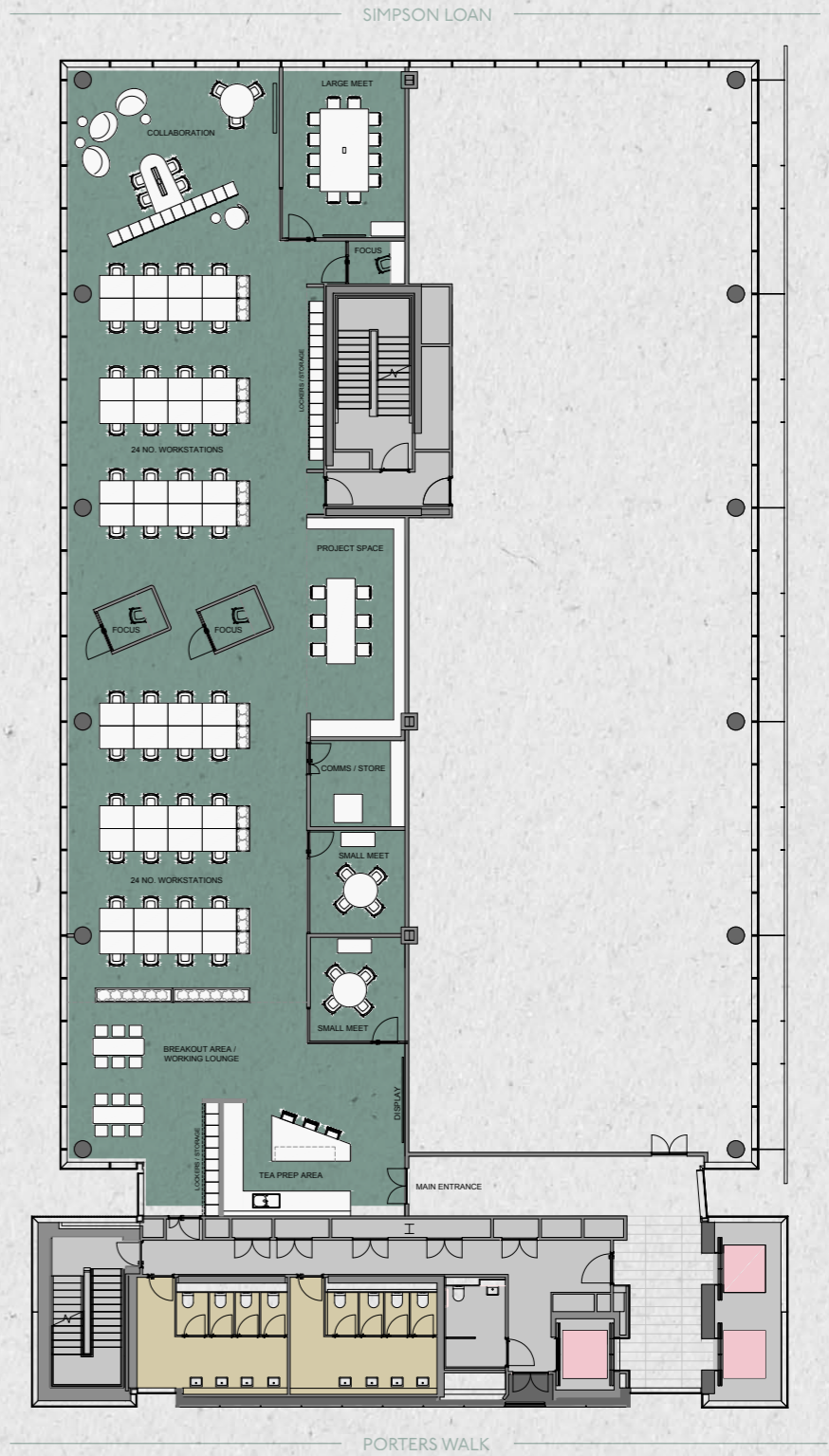
FLOOR PLAN

3rd FLOOR
EAST SUITE
4,833 SQ FT (449 SQ M) approx.



SPACE PLAN

3rd FLOOR
EAST SUITE
4,833 SQ FT (449 SQ M) approx.
Number of desks - 48
Number of enclosed meeting rooms - 3



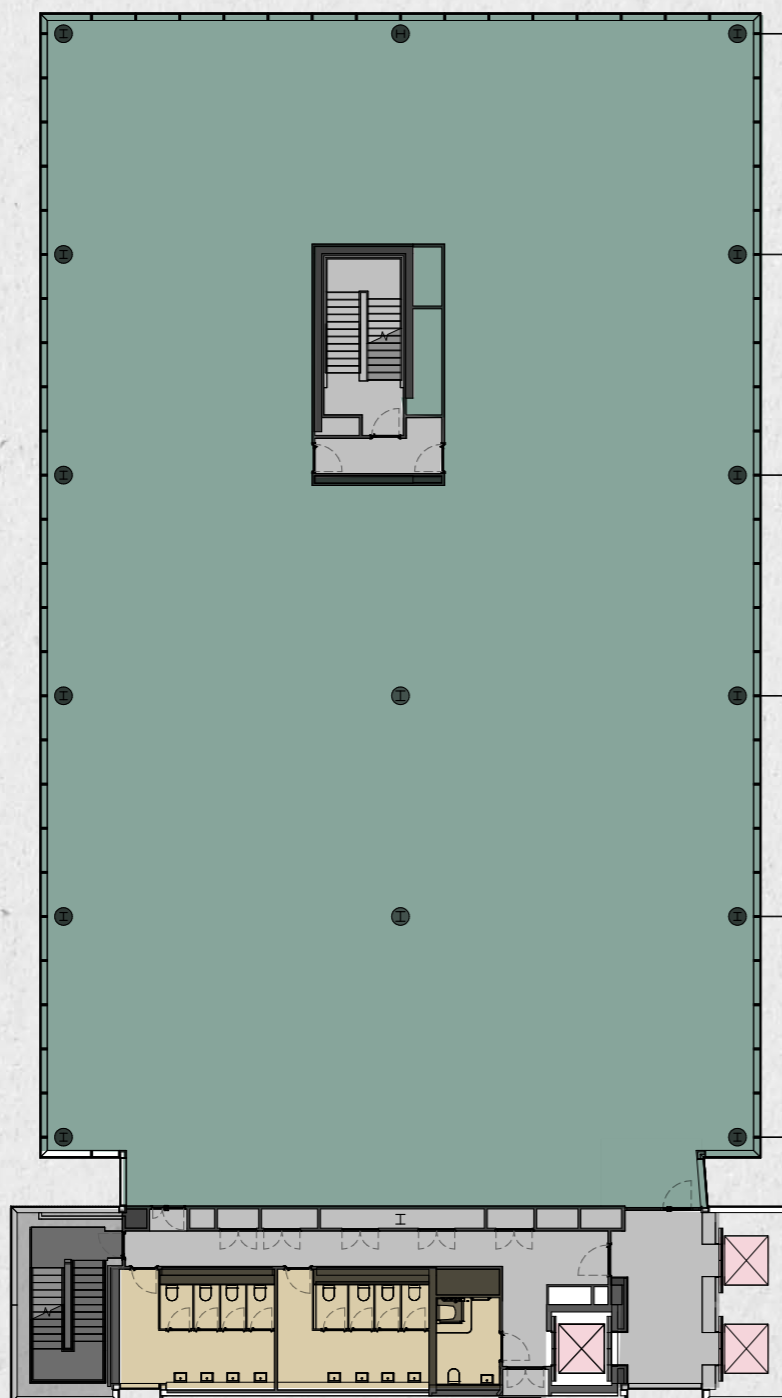
SPATIAL PLANS

KEY:

OFFICE	RECEPTION	LIFT
CYCLE STORAGE / LOCKERS	STAIRS/CORRIDOR	MEETING SPACE
WC/SHOWERS	COMMON AREA	

FLOOR PLAN

4th - 5th FLOOR
10,122 SQ FT (940.33 SQ M)

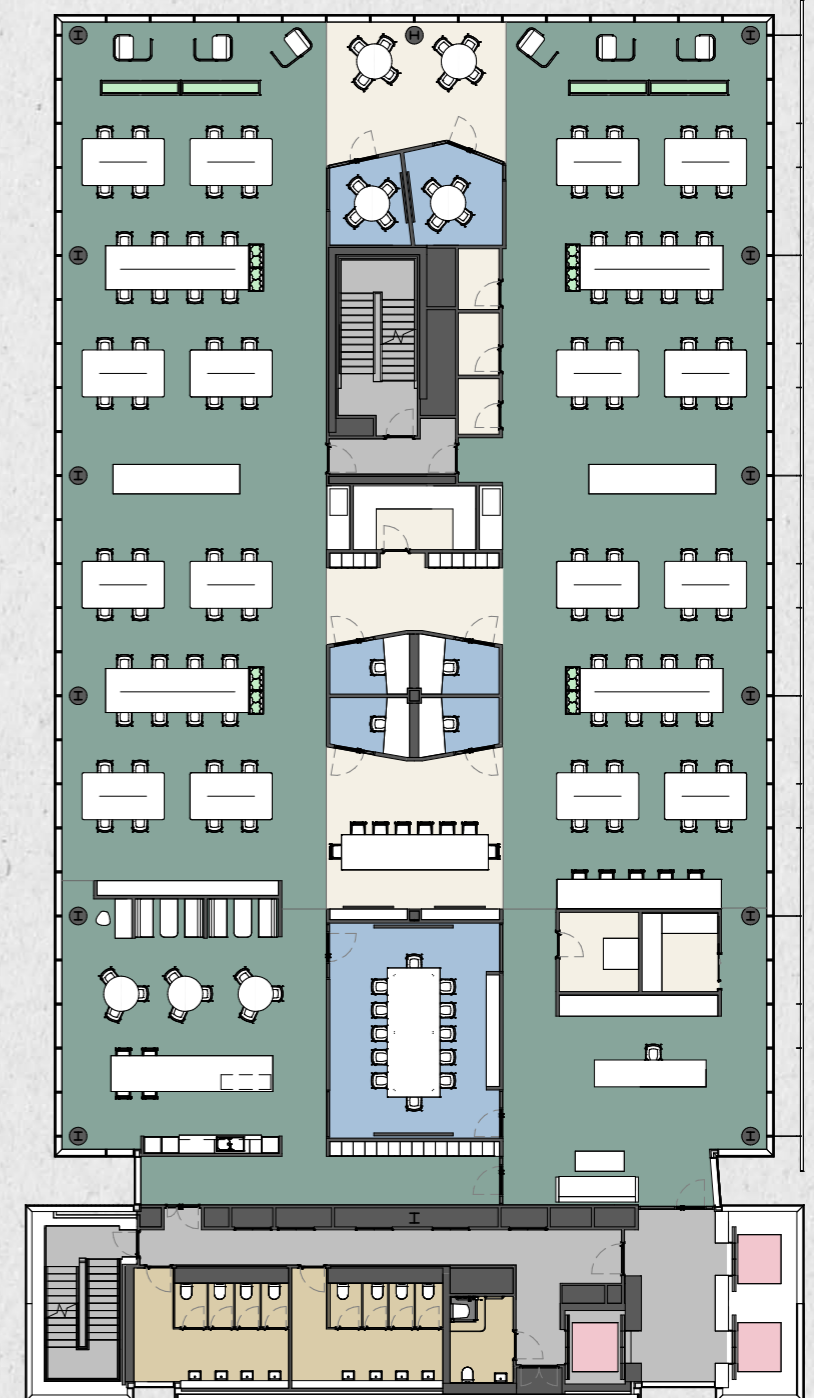


SPACE PLAN

4th - 5th FLOOR
10,122 SQ FT (940.33 SQ M)

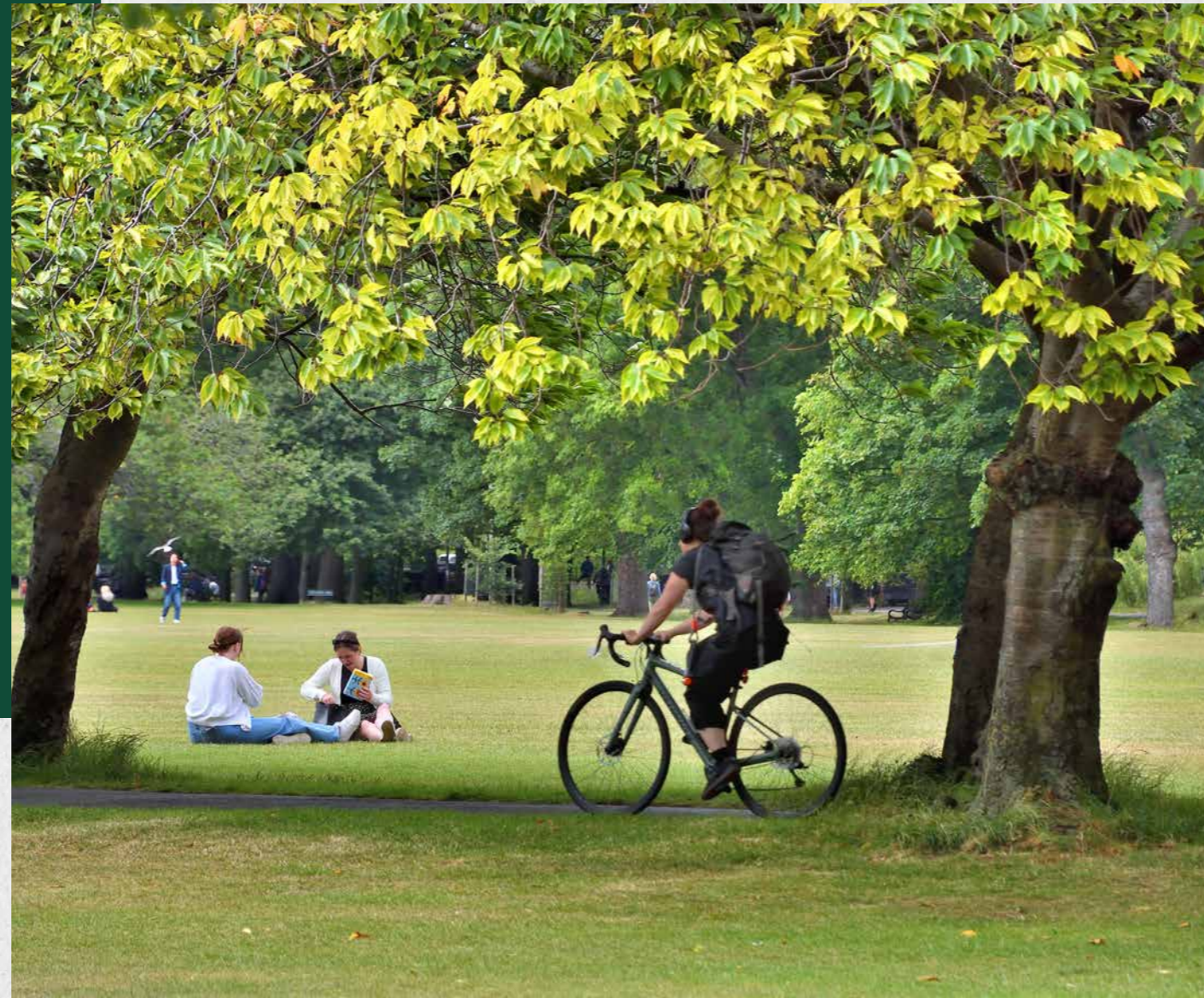
Number of desks - 96

Number of enclosed meeting rooms - 7



THE HEART & LUNGS OF THE CAPITAL

The Meadows, just a couple of minutes from Quatermile Two, provides acres of open parkland.



A place to relax and unwind - enjoy walking through the traffic free, tree lined pathways.



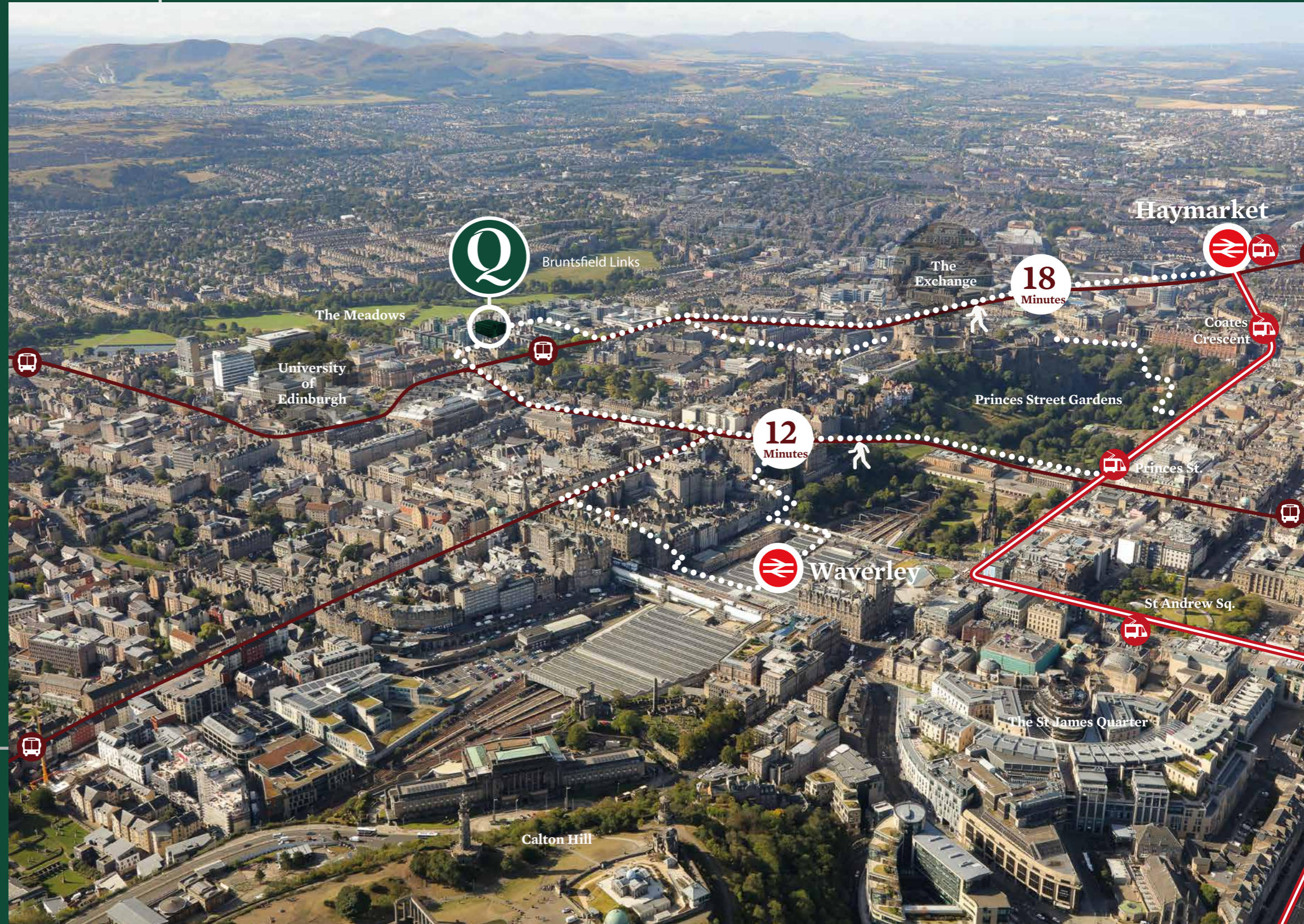
THE MEADOWS

For the more active, use it as part of your daily exercise routine or use the sports facilities including tennis courts, recreational sports pitches and even a croquet club.

Enjoy an outdoor break from the office, pick up a bite to eat or drink 'en route' from Peter's Yard, Soderberg, Starbucks or café Nero -all located within the Quatermile.

WELL CONNECTED

Edinburgh is a walkable city with continuing investment into high quality public transport, cycling networks and pedestrian friendly routes. Edinburgh therefore benefits from excellent connectivity locally, nationally and internationally thanks to a world class transport infrastructure.



WHERE PAST & FUTURE MEET

Quartermile Two forms part of the outstanding Quartermile development on Lauriston Place backing on to Edinburgh's famous Meadows.

The Old Town, Princes Street and Exchange District are all within a short walk. Furthermore, The University of Edinburgh has fully restored the Old Infirmary of Edinburgh which sits within the Quartermile development and is adjacent to Quartermile Two. This Category-A listed landmark is home to the Futures Institute and provides 21,300 sq.m of diverse accommodation. Uses include teaching and event space, lecture halls, meeting rooms and work hubs. The restoration also includes a new public piazza, generous multi-functional spaces for events, festivals and major lectures, outdoor spaces and a café.



£500BN

Edinburgh is the UK's largest regional financial centre with £500bn of assets under management. The city is home to over 30 operational banks and is headquarters to major financial institutions such as abrdn, Baillie Gifford, NatWest Group and Martin Currie.

16TH

In 2023 The University of Edinburgh was 16th out of 1,200 universities in the QS World University rankings. The growing university population is testament to the city as a prestigious, globally recognised place to study. Edinburgh's workforce is one of the most highly educated cities in the UK with 55% holding a degree or professional qualification.

96.5%

Edinburgh University is a fantastic source of graduate talent for employers in the city; indeed six months after graduating, 96.5% of its students are in employment or postgraduate study and it is one of the UK's leading universities targeted for recruitment.

Source: ed.ac.uk



1bn

Key technology companies such as Skyscanner, Rockstar North, Cirrus logic and Computershare have made Edinburgh their home. These companies, and many more, have made technology one of the fastest growing sectors with a GVA of £1bn.



9%

Edinburgh is one of the UK's fastest growing cities. From 2010 - 2020 the population of Edinburgh grew by 12.3%. The population is forecast to grow a further 9% by 2030.



IT'S ALL IN THE QUARTERMILE

Quartermile Two offers occupiers easy access to many of the services and amenities you need and expect. It's a great place to meet for breakfast, lunch or a drink or dinner after work.





QUARTERMILE TWO

WWW.QUARTERMILETWO.CO.UK

VIEWING & FURTHER INFORMATION

NICK WHITE

E nick@cuthbertwhite.com
M 07786 171 266



JAMES METCALFE

E james@cuthbertwhite.com
M 07786 623 282

MIKE IRVINE

E mike.irvine@savills.com
M 07919 918 664



KATE JACK

E kate.jack@savills.com
M 07815 032 092

IMPORTANT NOTICE: CuthbertWhite Ltd and Savills for the landlord of this property, whose agents they are, give notice that: 1. The particulars are intended to give a fair and substantially correct overall description for the guidance of intending tenants and do not constitute part of an offer or contract. Prospective tenants ought to seek their own professional advice. 2. All descriptions, dimensions, areas, reference to condition and necessary permissions for use and occupation and other details are given in good faith, and are believed to be correct, but any intending tenant should not rely on them as statements or representations of fact, but must satisfy themselves by inspection or otherwise as to the correctness of each of them. 3. No person in the employment of CuthbertWhite Ltd or Savills has any authority to make or give any representations or warranty whatever in relation to this property nor enter into any contract on behalf of the landlord. 4. No responsibility can be accepted for any expenses incurred by intending tenants in inspecting properties which have been sold, let or withdrawn.
APRIL 2026. Produced by Designworks.