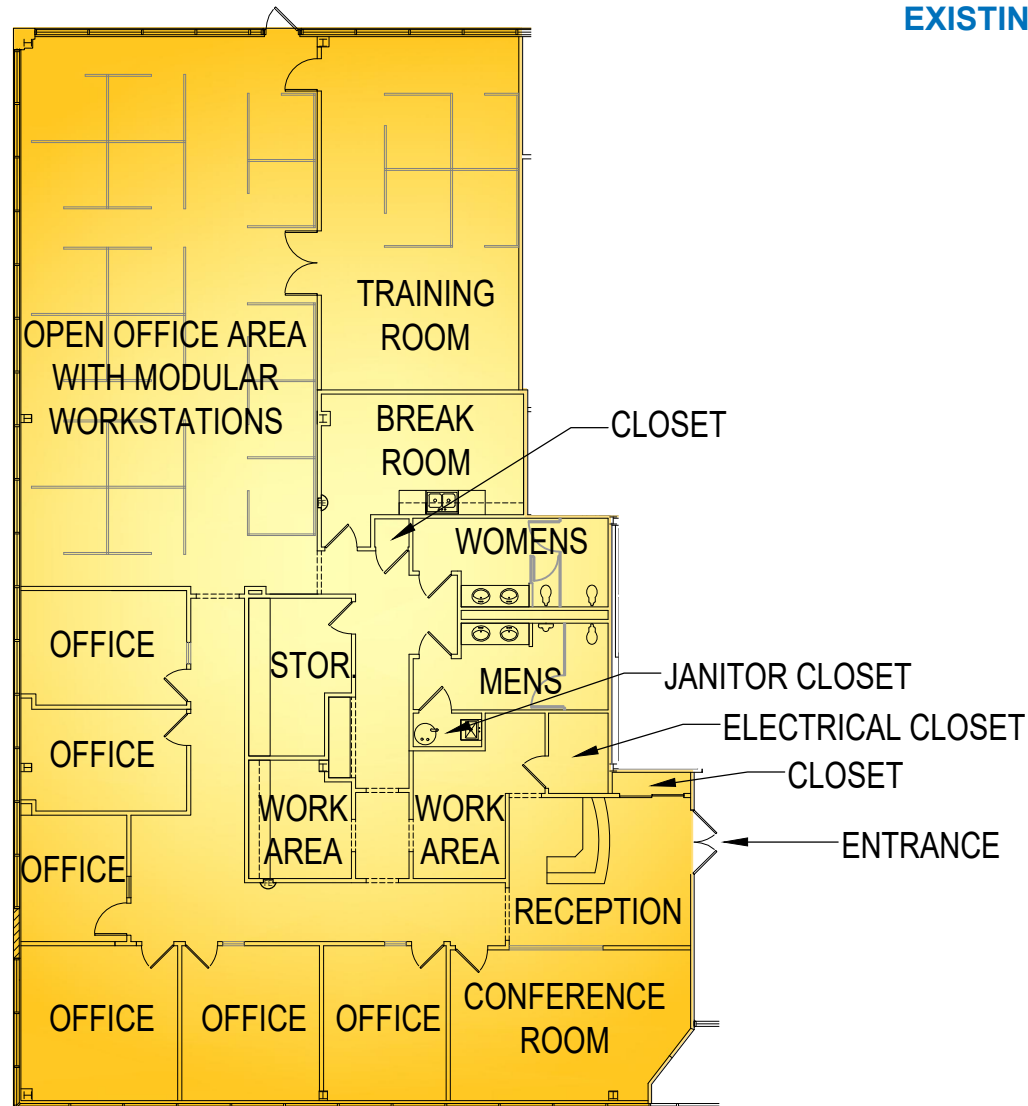


ENLARGED FLOOR PLAN

AVAILABLE 5,491 S.F. SPACE WITHIN AN EXISTING TWO-STORY OFFICE BUILDING

PARCEL 28
600 BALTIMORE DRIVE
EAST MOUNTAIN
CORPORATE CENTER
WILKES-BARRE, PENNSYLVANIA



These plans have been prepared solely for marketing purposes for the exclusive use of -- Mericle Commercial Real Estate Services

F:\Job\2071\IMDC\DWG-SPEC\mktg\MKT-600 BALTIMORE DR.-5491 SF SPACE 09292021.dwg MP

570.823.1100
mericle.com



East Mountain Corporate Center
100 Baltimore Drive
Wilkes-Barre, PA 18702

Developing Northeastern Pennsylvania's I-81 Corridor Since 1985