

# WILLCO BUSINESS CENTER

At Montgomery County Airpark



WILLCO



Leasing Information:  
301.304.8300

**Ethan Bernardi**    **Nathan Bortnick**  
301.304.8397        301.304.8392  
eberardi@lpc.com    nbortnick@lpc.com

## Lincoln

Lincoln Property Company  
1101 Wootton Pkwy Suite 410  
Rockville, MD 20854

[www.lpc.com](http://www.lpc.com)

# WILLCO BUSINESS CENTER

At Montgomery County Airpark

Space Available

97,265 SF



Availabilities	SF
7609 Airpark Road - Suite A*	3,337 SF
7609 Airpark Road - Suite B*	3,424 SF
7609 Airpark Road - Suite H*	3,424 SF
7609 Airpark Road - Suite I*	3,424 SF
7537 / 7539 / 7541 Rickenbacker Drive**	4,000 - 12,000 SF
7548 Rickenbacker Drive*	2,000 SF
19209 Chennault Way - Units E, F & G*	6,720 SF
19209 Chennault Way - Units J, K & L*	6,720 SF
19211 Chennault Way - Unit A*	4,480 SF
19211 Chennault Way - Units C & D*	8,960 SF
19324 Woodfield Road**	2,000 - 8,000 SF

\* Drive-in access

\*\* Drive-in and loading dock

### Property Highlights

- Combination of industrial warehouse, showroom, and office
- 16 - 18 foot clear ceiling heights
- Drive-in & loading docks available
- Close proximity to I-270, I-370, and ICC

Ethan Bernardi    Nathan Bortnick

301.304.8397

301.304.8392

ebernardi@lpc.com

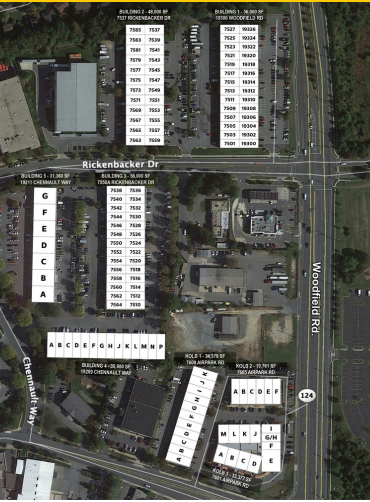
nbortnick@lpc.com

**Lincoln**

# WILLCO BUSINESS CENTER

At Montgomery County Airpark

Property Photos  
2,000 - 12,000 SF



Ethan Bernardi  
301.304.8397  
ebernardi@lpc.com

Nathan Bortnick  
301.304.8392  
nbortnick@lpc.com

Lincoln

# WILLCO BUSINESS CENTER

Site Plan

At Montgomery County Airpark



Ethan Bernardi Nathan Bortnick

301.304.8397

301.304.8392

ebernardi@lpc.com

nbortnick@lpc.com

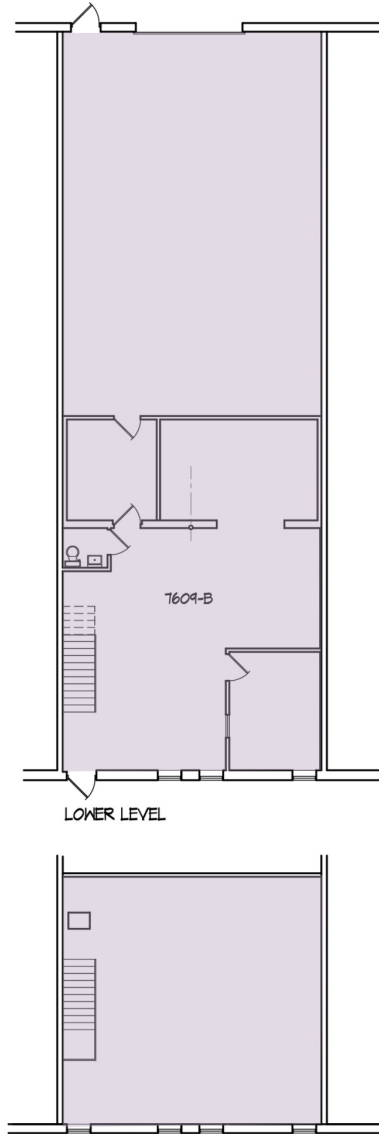
Lincoln

# WILLCO BUSINESS CENTER

At Montgomery County Airpark

7609 Airpark Road - Suite B

3,424 SF



Suite	Size	Description
■ 7609 Airpark Road - Suite B*	3,424 SF	Available Immediately Drive-in access

**Ethan Bernardi**   **Nathan Bortnick**

301.304.8397

301.304.8392

ebernardi@lpc.com

nbortnick@lpc.com

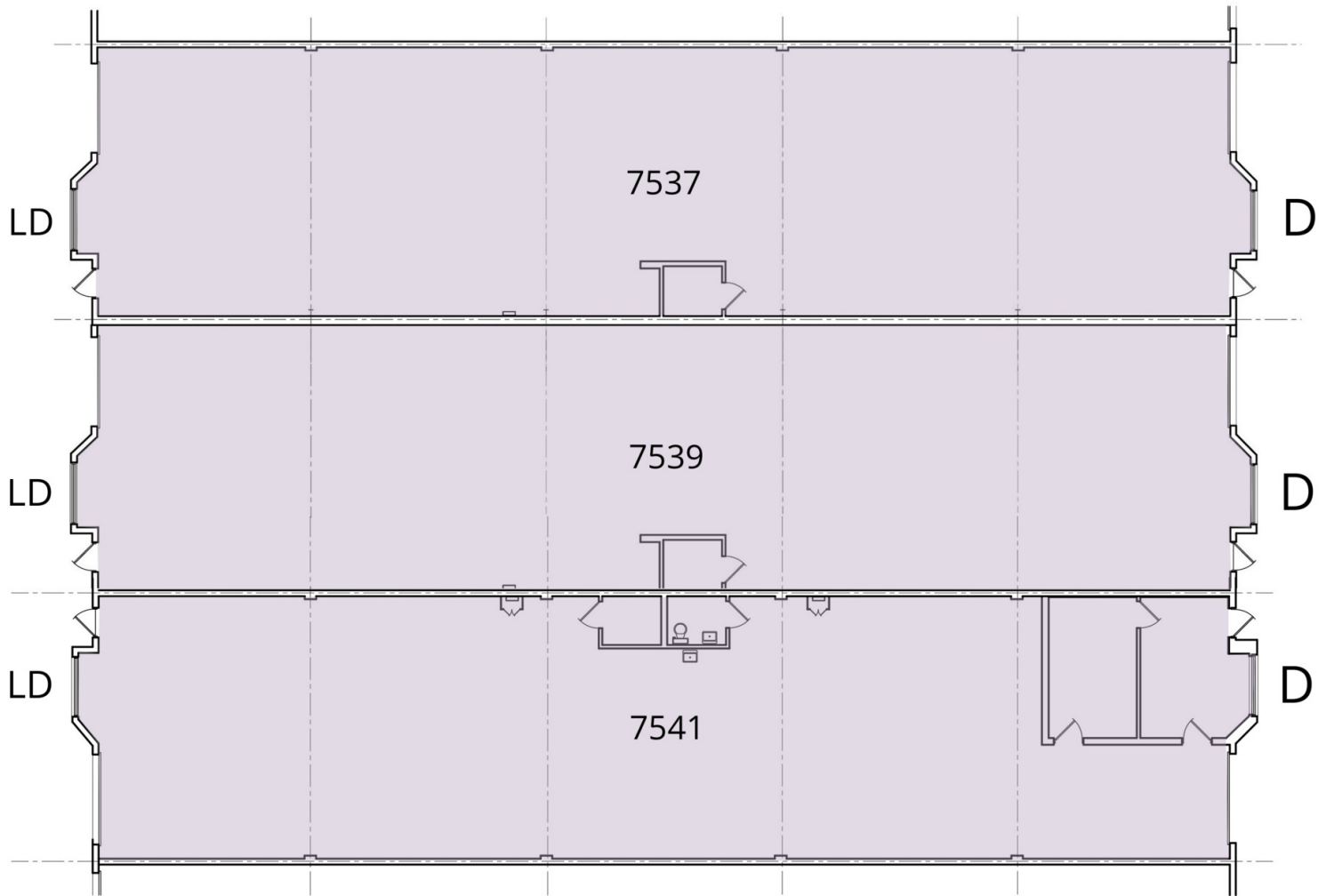
**Lincoln**

# WILLCO BUSINESS CENTER

At Montgomery County Airpark

7537 / 7539 / 7541 Rickenbacker Drive

4,000 - 12,000 SF



Suite	Size	Description
■ 7537 / 7539 / 7541 Rickenbacker Drive**	4,000 - 12,000 SF	Available Immediately 16'-11" floor to joist 17'-8" floor to deck

**Ethan Bernardi**   **Nathan Bortnick**

301.304.8397

301.304.8392

ebernardi@lpc.com

nbortnick@lpc.com

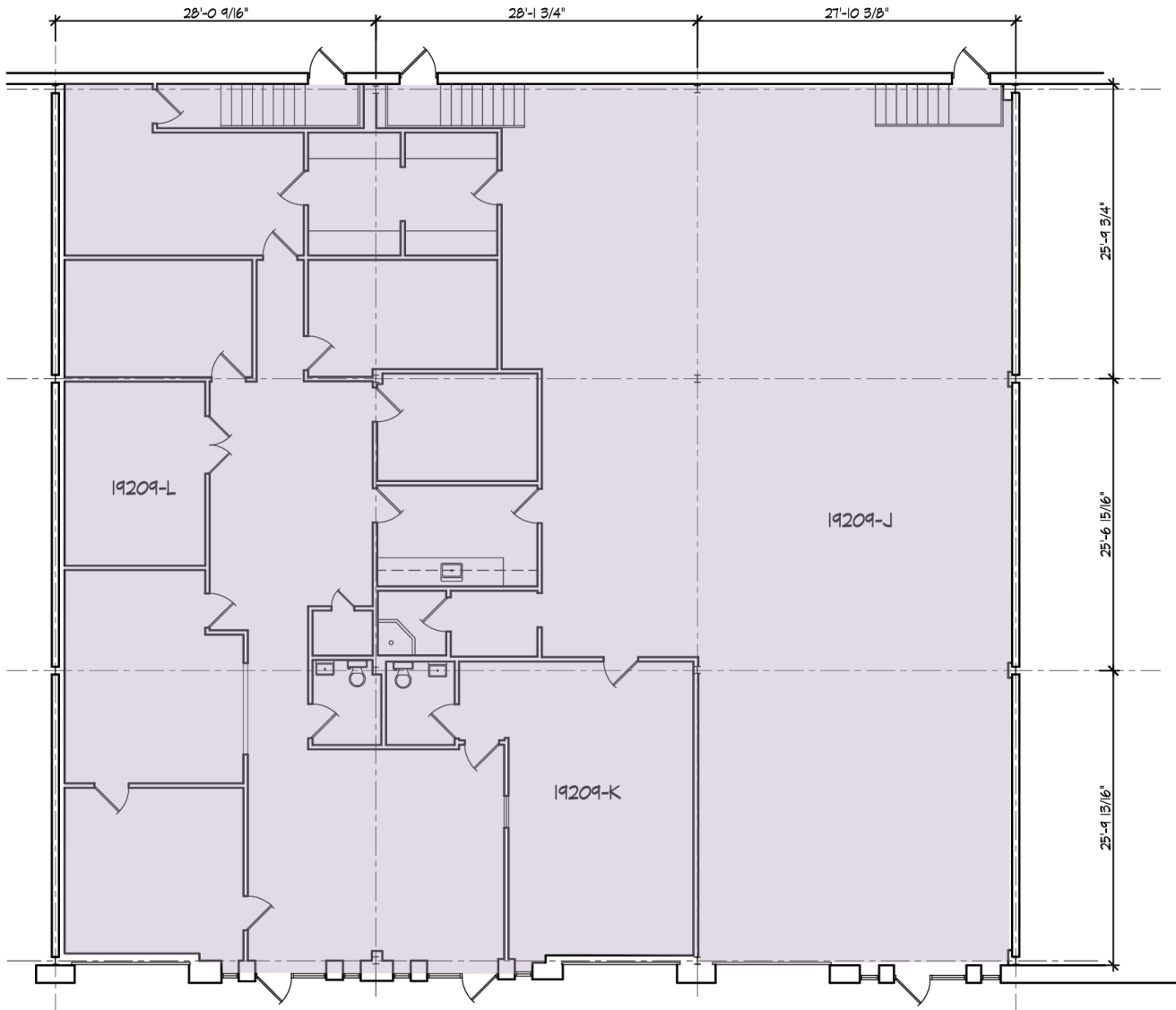
## Lincoln

# WILLCO BUSINESS CENTER

At Montgomery County Airpark

19209 Chennault Way - Units J, K & L

6,720 SF



Suite	Size	Description
■ 19209 Chennault Way - Units J, K & L*	6,720 SF	Available Immediately Drive-in access Combination of built-out office and warehouse 16'-11" floor to joist 18'-6" floor to deck

**Ethan Bernardi**    **Nathan Bortnick**

301.304.8397

301.304.8392

ebernardi@lpc.com

nbortnick@lpc.com

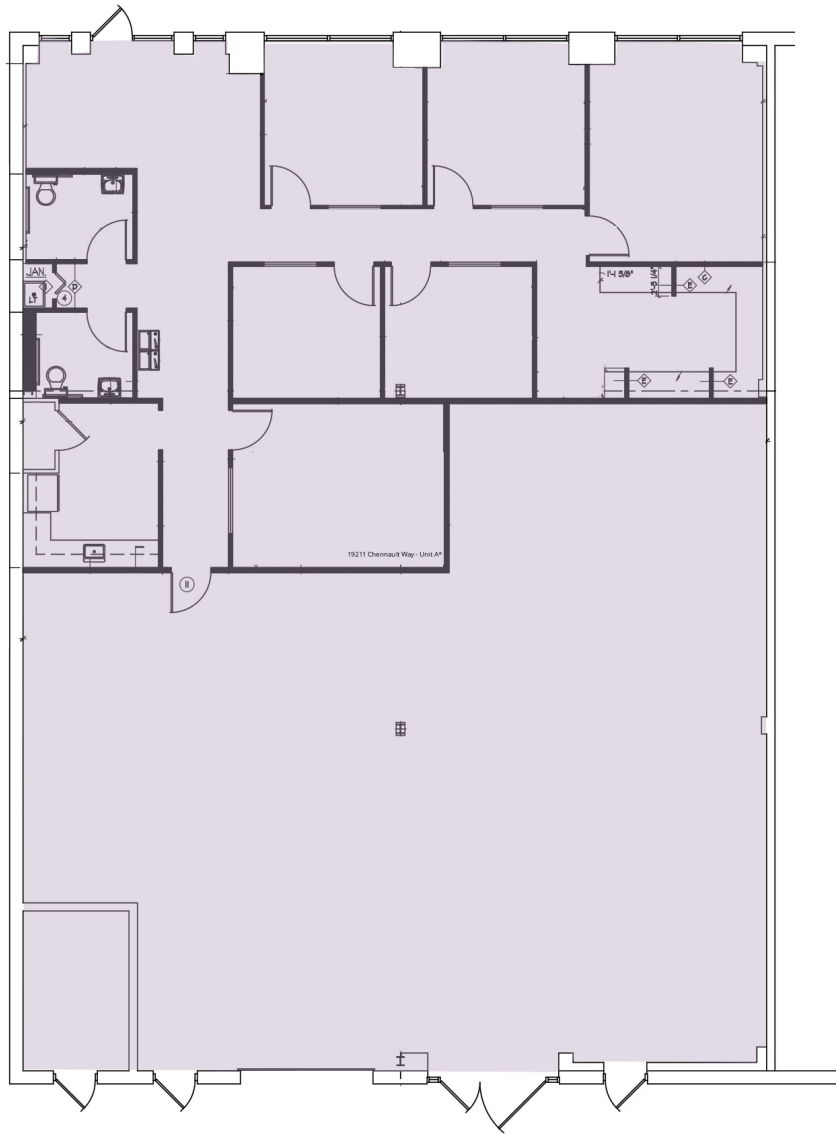
**Lincoln**

# WILLCO BUSINESS CENTER

At Montgomery County Airpark

19211 Chennault Way - Unit A

4,480 SF



Suite	Size	Description
■ 19211 Chennault Way - Unit A*	4,480 SF	Available Immediately Drive-in access

Ethan Bernardi Nathan Bortnick

301.304.8397

301.304.8392

ebernardi@lpc.com

nbortnick@lpc.com

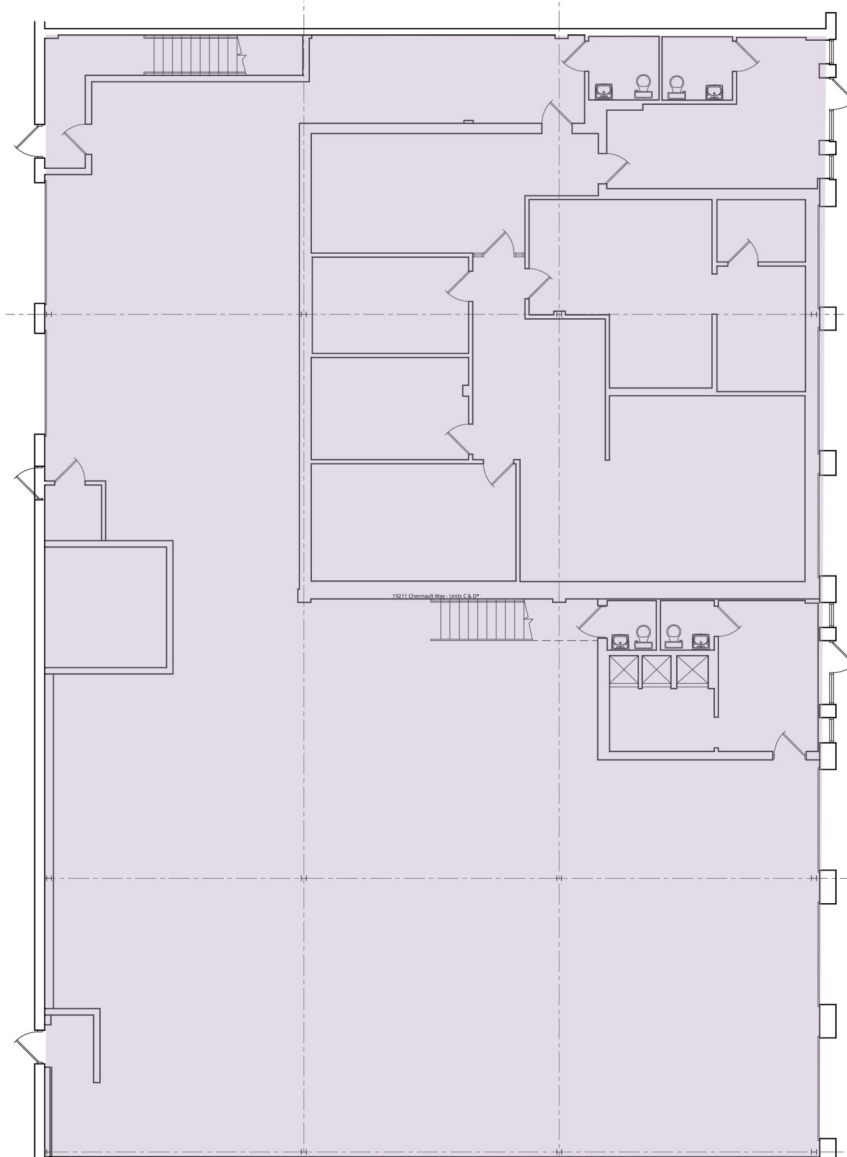
Lincoln

# WILLCO BUSINESS CENTER

At Montgomery County Airpark

19211 Chennault Way - Units C & D

8,960 SF



Suite	Size	Description
■ 19211 Chennault Way - Units C & D*	8,960 SF	Available Immediately Drive-in access

**Ethan Bernardi**   **Nathan Bortnick**

301.304.8397

301.304.8392

ebernardi@lpc.com

nbortnick@lpc.com

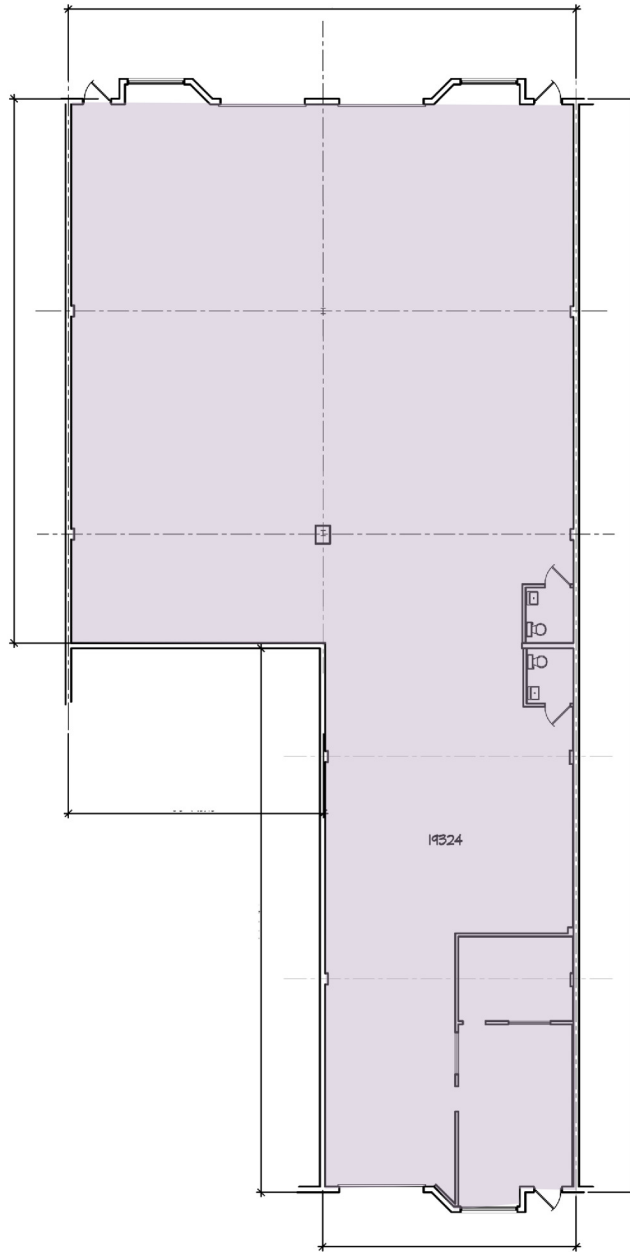
**Lincoln**

# WILLCO BUSINESS CENTER

At Montgomery County Airpark

19324 Woodfield Rd

2,000 - 8,000 SF



Suite	Size	Description
■ 19324 Woodfield Road**	2,000 - 8,000 SF	Available Immediately 2,000 SF and 6,000 SF available (can be combined for 8,000 SF total) Drive-in and loading dock 16'-11" floor to joist 18'-7" floor to deck

**Ethan Bernardi**   **Nathan Bortnick**

301.304.8397

301.304.8392

ebernardi@lpc.com

nbortnick@lpc.com

# Lincoln

# WILLCO BUSINESS CENTER

At Montgomery County Airpark

Property Photos

2,000 - 12,000 SF



**Building 1** - 19300 Woodfield Road



**Building 2** - 7537 Rickenbacker Dr



**Building 3** - 7510 Rickenbacker Dr



**Building 4** - 19209 Chennault Way



**Building 5** - 19211 Chennault Way



**KOLB 1** - 7609 Airpark Road



**KOLB 2** - 7605 Airpark Road



**KOLB 3** - 7601 Airpark Road

**Ethan Bernardi**   **Nathan Bortnick**

301.304.8397

301.304.8392

ebernardi@lpc.com

nbortnick@lpc.com

**Lincoln**



# WILLCO BUSINESS CENTER



At Montgomery County Park

Leasing Information:  
301.304.8300

**Ethan Bernardi**  
301.304.8397  
ebernardi@lpc.com

**Nathan Bortnick**  
301.304.8392  
nbortnick@lpc.com

## Lincoln

Lincoln Property Company  
1101 Wootton Pkwy Suite 410  
Rockville, MD 20854

[www.lpc.com](http://www.lpc.com)