



Keegan & Coppin
COMPANY, INC.

FOR LEASE

975 CORPORATE CENTER PKWY
SANTA ROSA, CA

WAREHOUSE SPACE AVAILABLE



Go beyond broker.

REPRESENTED BY:

SHAWN JOHNSON,
MANAGING PARTNER / SIOR
LIC # 00835502 (707) 528-1400, EXT 238
SJOHNSON@KEEGANCOPPIN.COM



975 CORPORATE
CENTER PKWY
SANTA ROSA, CA

**WAREHOUSE
SPACE FOR
LEASE**

PROPERTY DETAILS

PROPERTY HIGHLIGHTS

- Year Built: 2000
- Minutes Away from Downtown Santa Rosa
- Professional Business Park Setting
- ESFR Sprinkler System
- 2,000 AMP, 3 Phase, 277/480 Power Available to the Building
- Available Summer 2026
- Conveniently Located Near Hwy 12 & 101
- Secured Truck Access and Parking in Rear

PROPERTY INFORMATION

Lease Rate

Call Agent

Lease Term

Negotiable

Parking

2.6/1,000 On-Site Parking

Zoning

BP - Business Park

PREMISES	OFFICE SPACE DESCRIPTION	WAREHOUSE SPACE DESCRIPTION
Suites 140 A & 170 22,949+/- SF	Private Restrooms. No Office.	4 Dock Doors and 3 Grade-Level Doors (24' Max Clear Height in Warehouse). Warehouse racking system within Suite 140 A.
Suites 140 B 12,667+/- SF	Private Restrooms. No Office.	Dock Doors and Grade-Level Doors (24' Max Clear Height in Warehouse).

*Available spaces are adjacent and can be combined totalling 35,516+/- SF.

Keegan & Coppin Co., Inc.
1355 N Dutton Ave., Suite 100
Santa Rosa, CA 95401
keegancoppin.com
P: (707) 528-1400

REPRESENTED BY:

SHAWN JOHNSON,
MANAGING PARTNER / SIOR
LIC # 00835502 (707) 528-1400, EXT 238
SJOHNSON@KEEGANCOPPIN.COM



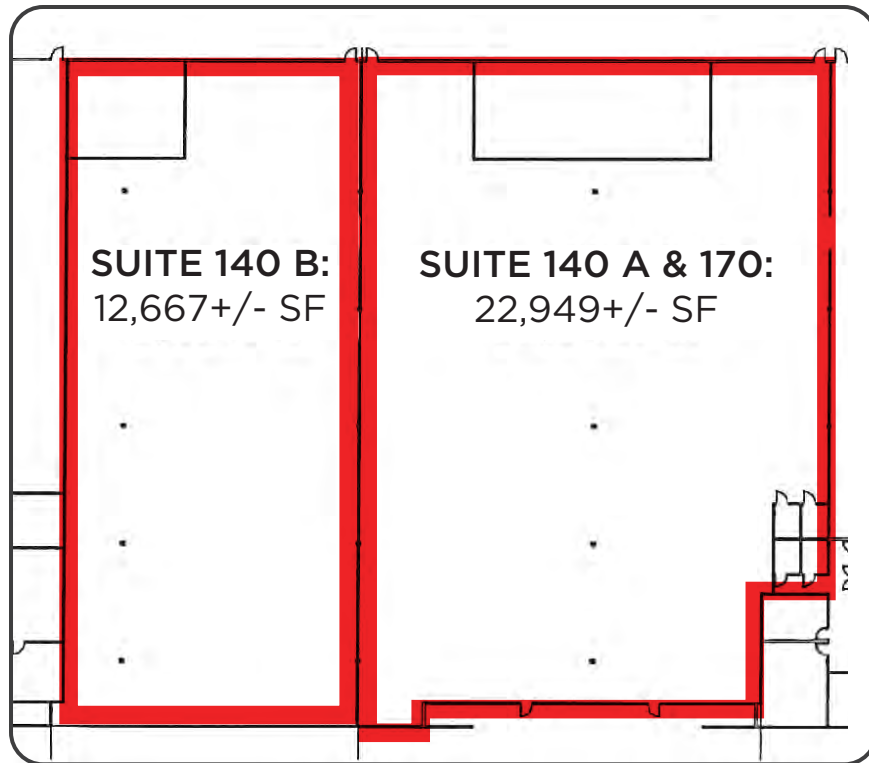
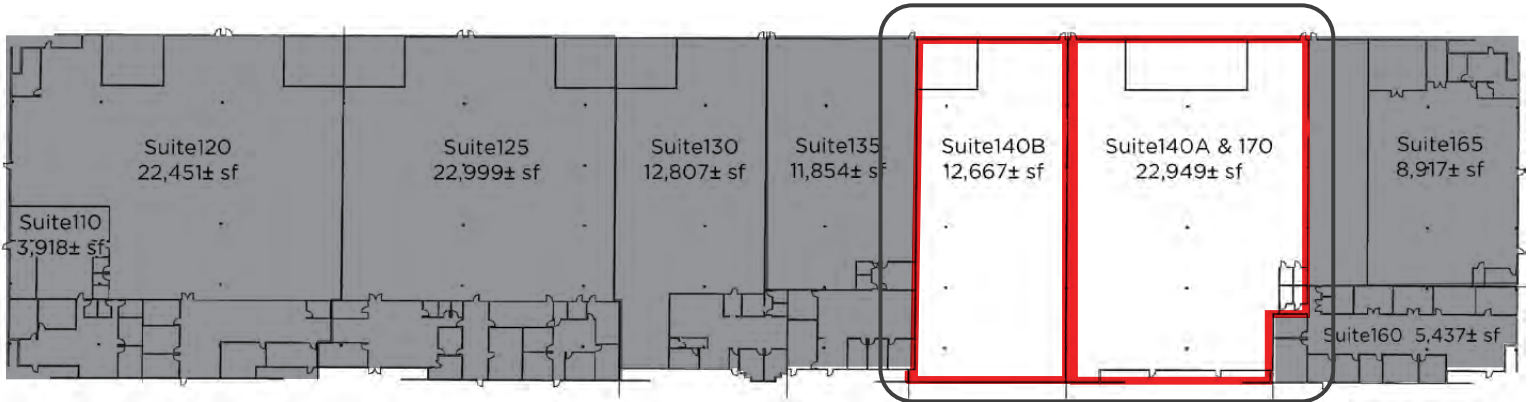
Keegan & Coppin
COMPANY, INC.



975 CORPORATE
CENTER PKWY
SANTA ROSA, CA

**WAREHOUSE
SPACE FOR
LEASE**

FLOOR PLAN - SUITES 140A/170/140B



ENLARGED VIEW

PRESENTED BY: SHAWN JOHNSON, MANAGING PARTNER / SIOR
LIC # 00835502 (707) 528-1400, EXT 238
SJOHNSON@KEEGANCOPPIN.COM

The above information, while not guaranteed, has been secured from sources we believe to be reliable. Submitted subject to error, change or withdrawal. An interested party should verify the status of the property and the information herein.



975 CORPORATE CENTER PKWY
SANTA ROSA, CA

WAREHOUSE SPACE FOR LEASE

AERIAL MAP



PRESENTED BY:

SHAWN JOHNSON, MANAGING PARTNER / SIOR
LIC # 00835502 (707) 528-1400, EXT 238
SJOHNSON@KEEGANCOPPIN.COM

The above information, while not guaranteed, has been secured from sources we believe to be reliable. Submitted subject to error, change or withdrawal. An interested party should verify the status of the property and the information herein.