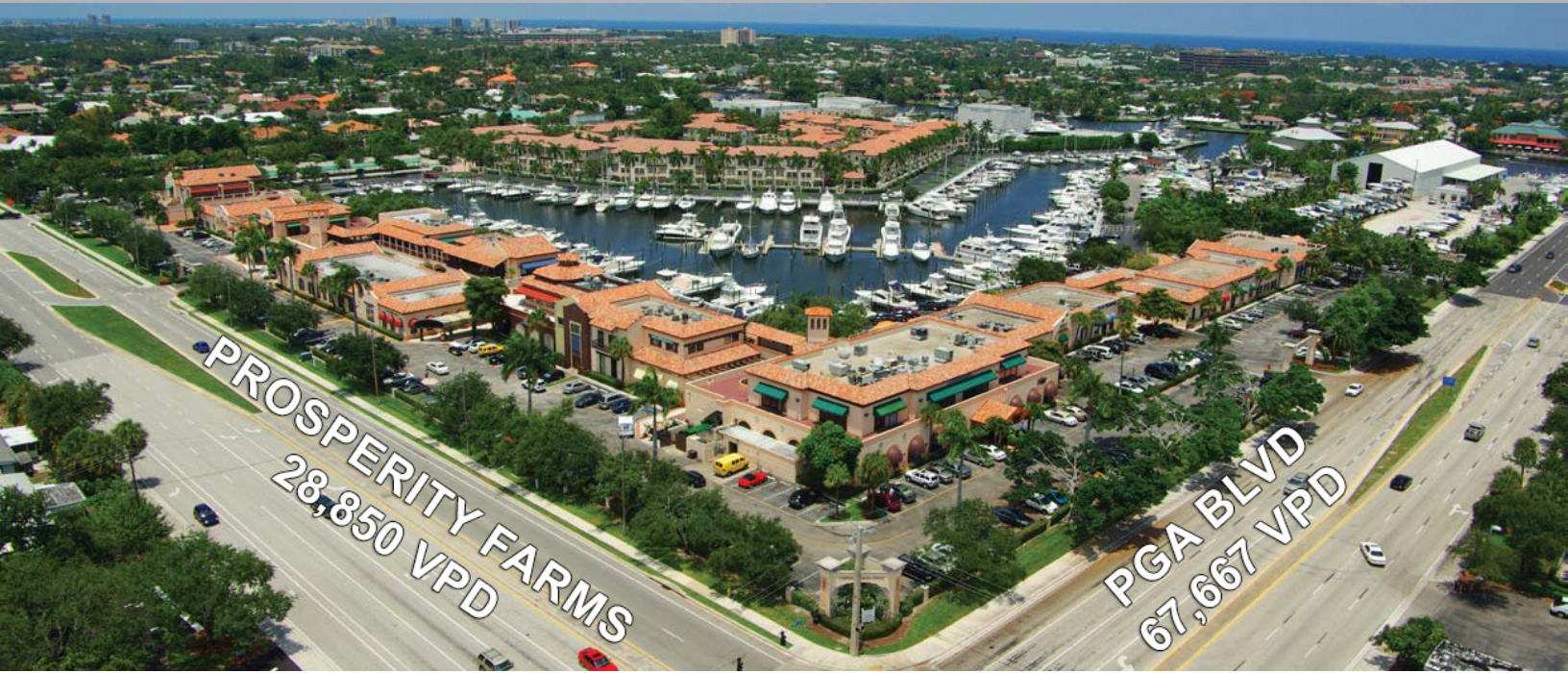


Harbour Financial Center Office Building - Suite 196

Palm Beach Gardens, FL

Retail / Office Center



SITE SUMMARY

Harbour Financial Center is a 119,264 square foot center situated on the Harbor Marina, creating a unique scenic environment within which to work, dine and/or shop. Perfect for office/retail or medical users.

ANCHORED BY

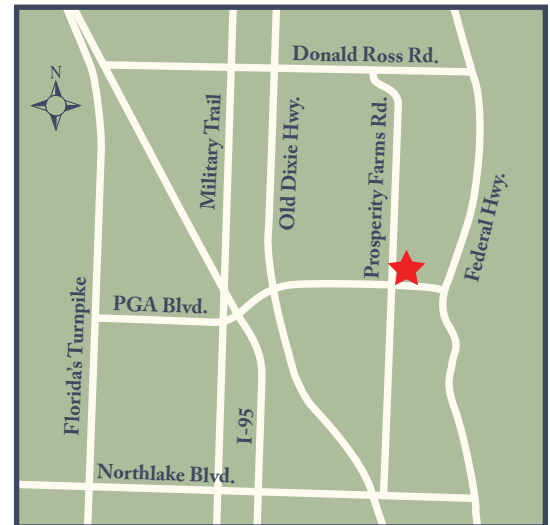
- Carmine's Market & Restaurant
- Comerica Financial Services
- Fire Fin Grill
- Edmund James Salon
- Natural Medicine Center
- Drs. Brian and Andrea Hass
- Angry Moon Cigar
- Glander International
- Dr. Nicholas deFabrique - Dentist
- Southport Maritime
- HMY Yacht Sales
- Nutrition World

SITE SUMMARY

- Located on PGA Blvd, the most desirable retail location in Palm Beach County.
- Excellent demographics including high income and growth.
- Business setting with outdoor patios and courtyards with marina views, eateries and shopping. Covered Parking and Complimentary Valet Services.
- The location is the gateway to some of Florida's most prestigious residential communities including Lost Tree Village, Seminole Landing, Ballen Isles, Admirals Cove, Frenchman's Landing, Frenchman's Creek, Frenchman's Reserve, Jack Nicklaus Bear 's Club & Ritz-Carlton Golf Club & Spa.
- The attractive scenic setting, the PGA location and the mix of tenants makes Harbour Financial Center the premier specialty center in Palm Beach County.

LOCATION

Strategically located at the intersection of PGA Boulevard and Prosperity Farms Road. PGA Blvd has direct access to I-95 and the Florida Turnpike.



Information

Tom Hamilton | O: 561-425-5238 | C: 561-307-1190 | tom@trhmanagement.com

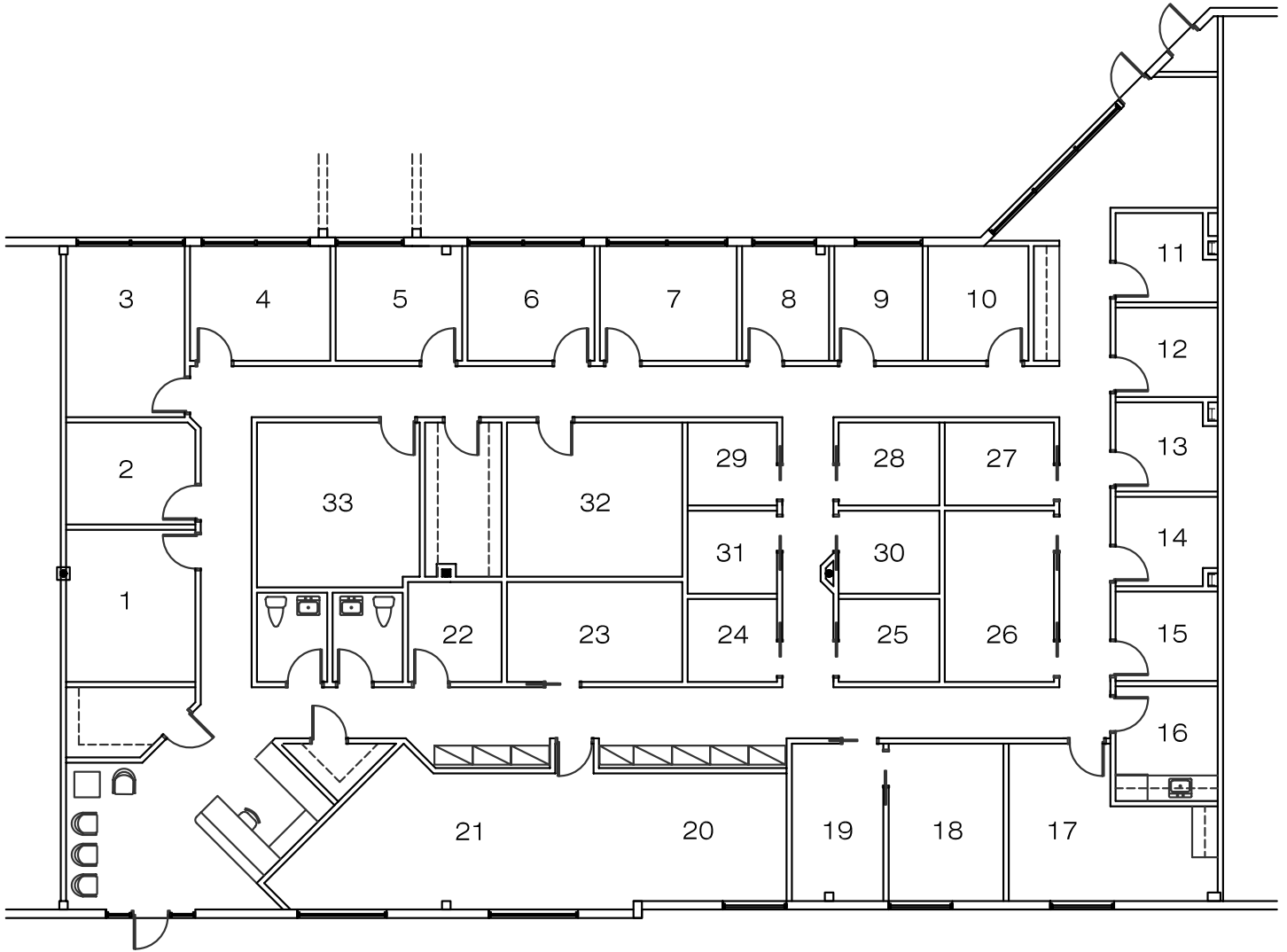
2401 PGA Blvd, Suite 280 | Palm Beach Gardens, FL 33410

www.trhmanagement.com

Harbour Financial Center Office Building - Suite 196

Palm Beach Gardens, FL

Retail / Office Center



2022 DEMOGRAPHICS	1 MILE	3 MILES	5 MILES
Population	9,239	62,426	144,346
Average Age	49.9	50.4	48.4
Average HH Income	\$112,737	\$126,131	\$124,445
Daytime Employees	10,323	54,377	103,922



Information

Tom Hamilton | O: 561-425-5238 | C: 561-307-1190 | tom@trhmanagement.com

2401 PGA Blvd, Suite 280 | Palm Beach Gardens, FL 33410

www.trhmanagement.com