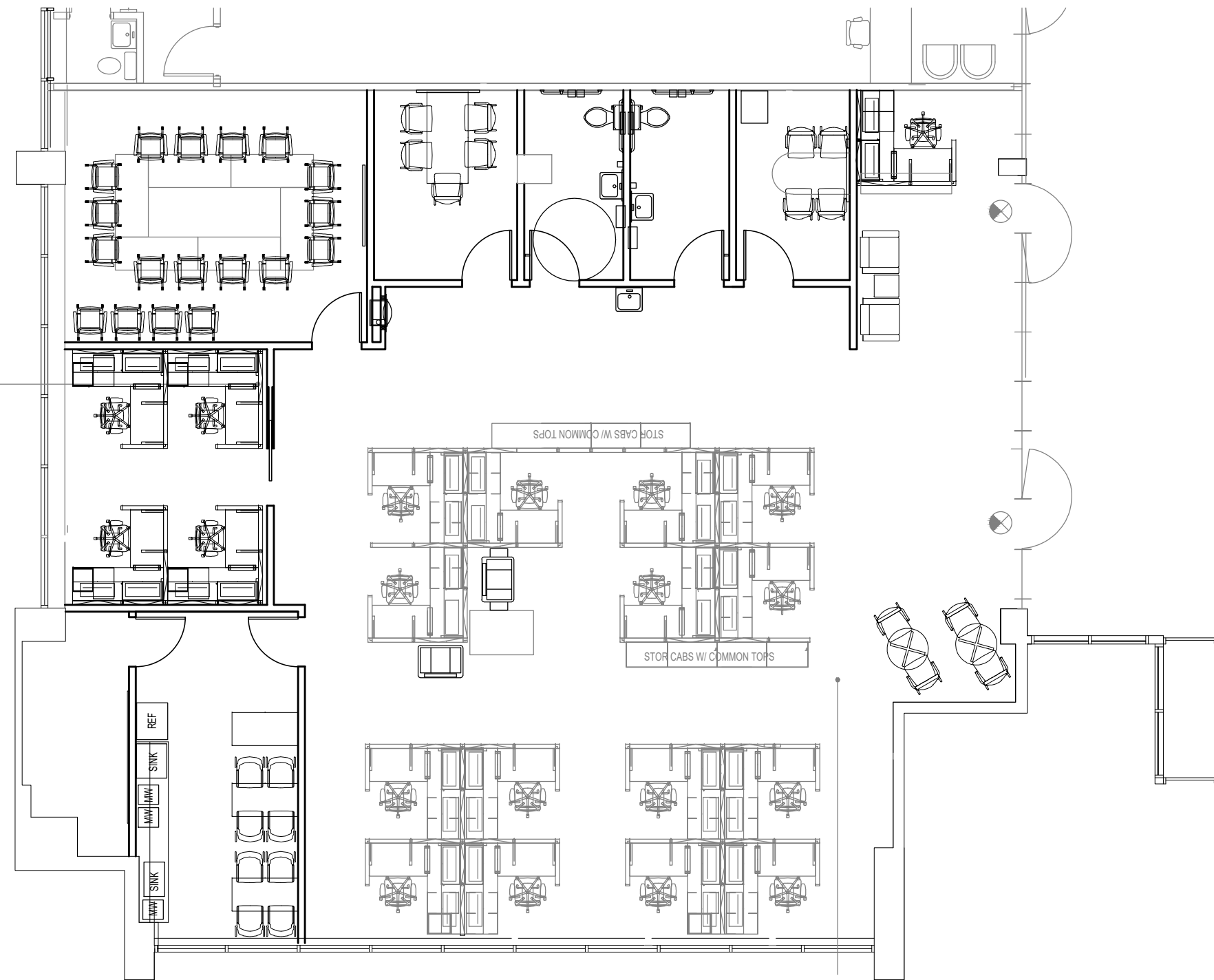


SUITE 102



SUITE 101

**KIMMERLE NEWMAN
Architects**

architecture
planning
interiors

1109 Mt. Kemble Ave. 127 W. 20th St. Suite 100
Harding Twp., NJ 07960 New York, NY 10011
973 538 8885 212 858 9512
www.kimmerle.com

LICENSE
GEORGE KIMMERLE, AIA

- CT: ARI8716
- CO: 305909
- FL: AR0016701
- GA: 010231
- IL: 1017684
- MA: 10349
- NJ: AI07767
- NY: 025722-1
- PA: RA-012892-B
- TX: 17033
- WI: 10098-005
- VA: 0401-012782
- WA: 11849

PAUL NEWMAN, AIA, CID
NJ: 11934

All drawings and designs are the property of Kimmerle Newman Architects, PA for the specified project and shall not be used or reproduced without the written permission of Kimmerle Newman Architects, PA

revisions		
no.	date	issue
1		

222 Route 59
Suffern, NY

PROJECT
RENOVA EQUITIES

**FIRST FLOOR
SUITE 101/102**

date 05/13/21	project number 1878
scale 1/8"=1'-0"	drawing number SK-1
drawn by KM	
filename **.DWG	