

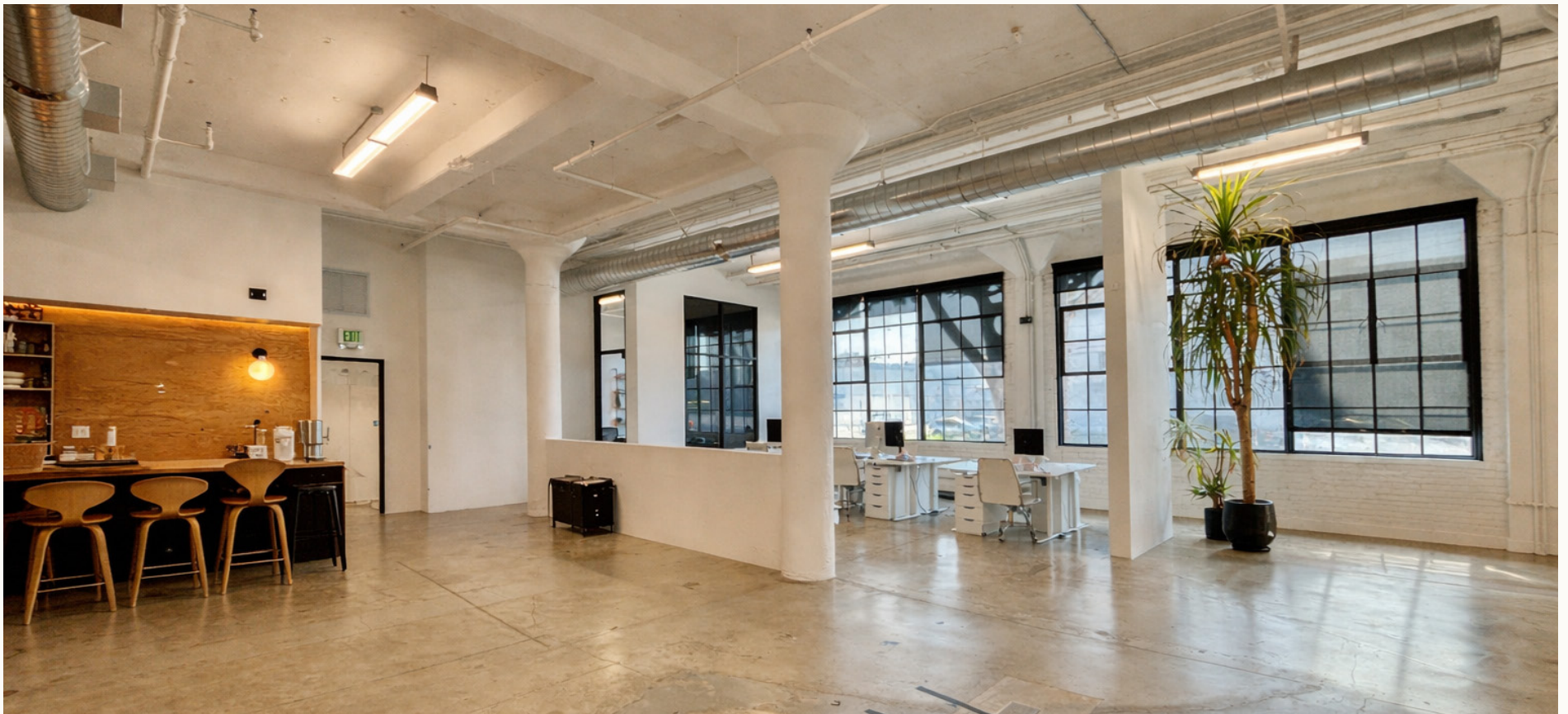
# FOR LEASE

1451-1473 East 4th Street  
Los Angeles, CA 90033



FOR—LEASE

# Beautiful Creative Office/Flex Space for Lease



## FEATURES

# Located at the Iconic Bridge & Corner Campus



An opportunity to lease a beautiful move-in ready creative office suite

### SPACE LAYOUT:

- 3 - 4 private offices
- 1 conference room
- 2 private restrooms
- Beautiful kitchen with bar seating
- Abundance of natural light with 13 foot exposed ceilings
- Large open bullpen with flexible build-out arrangements
- Heavily secured private property,
- Perfect space for all creative users (i.e., fashion brands, beauty, production, entertainment, tech, media, etc.)

## SUITE 100

±4,716 SF

## ASKING RENT

Negotiable, NNN

## CEILING HEIGHT

13 feet

## PARKING

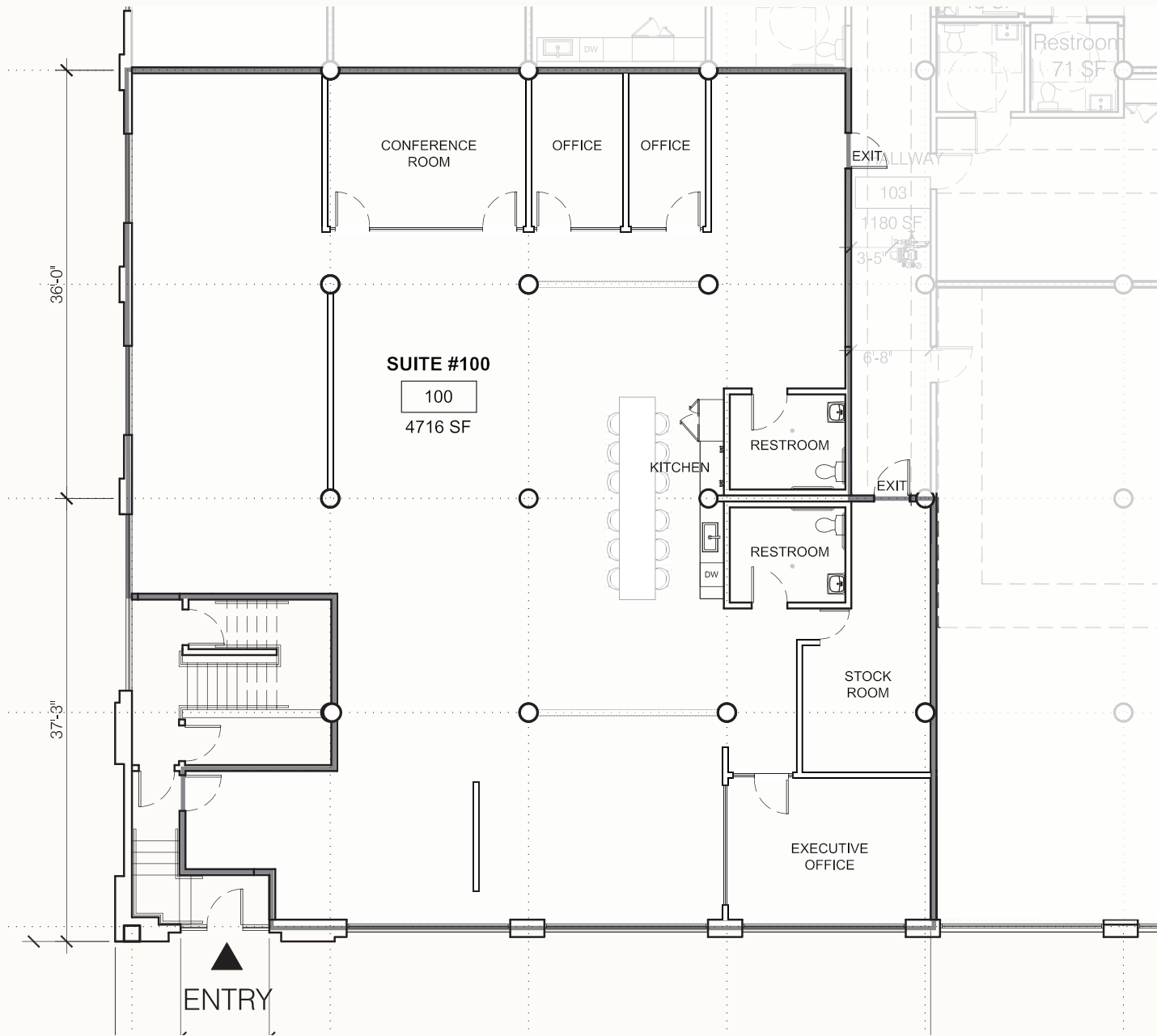
7 Reserved Spaces @ \$150 per space (Negotiable, abundance of availability in private lot)

---









# Our Neighbors

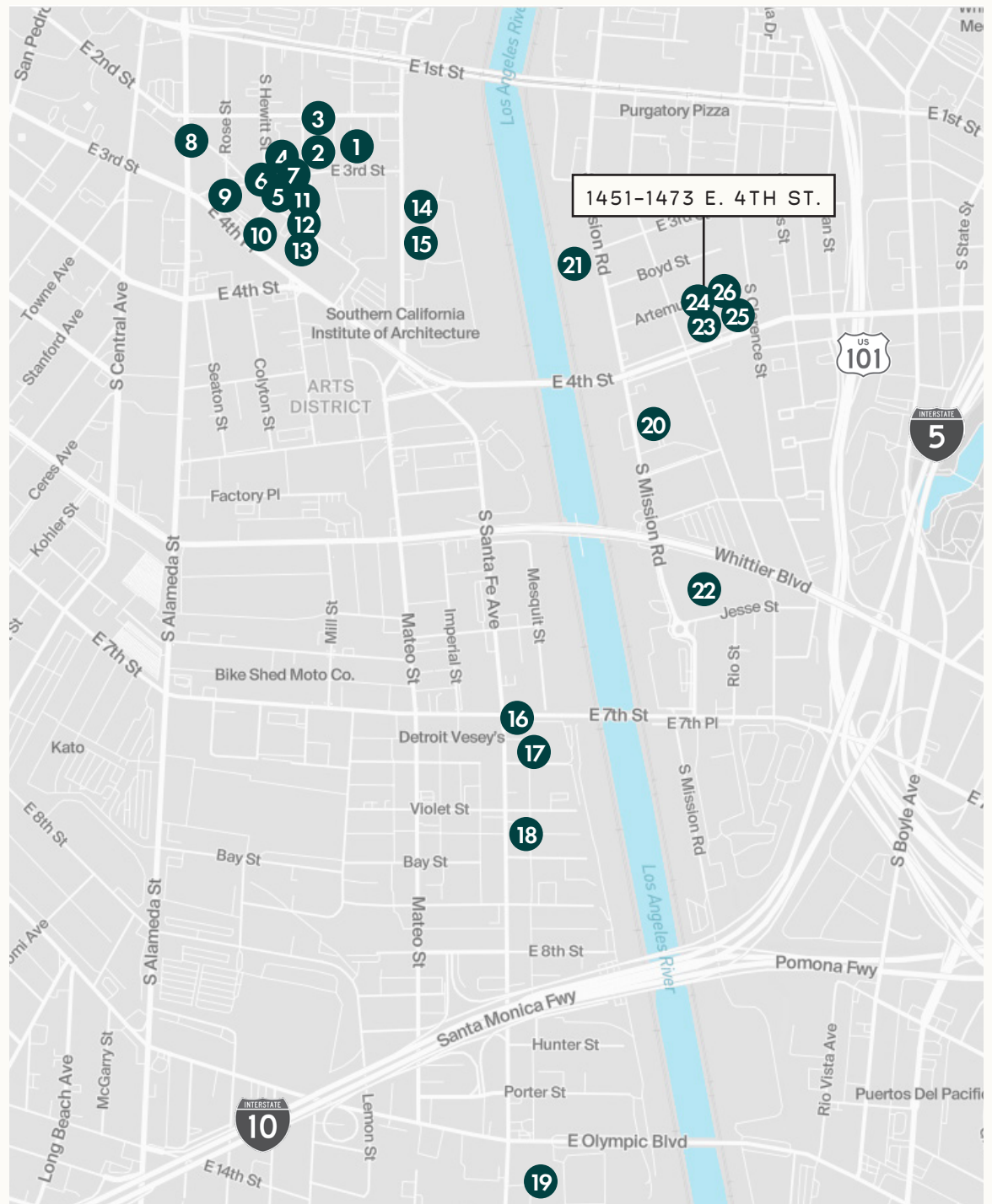
EAT DRINK AMERICANO  
HAUSER, WIRTH & SHIMMEL GALLERY  
MANUELA  
SALT & STRAW  
DEATH & CO  
LA CHA CHA CHA  
WURSTKUTCHE  
ANGEL CITY BREWERY  
EIGHTYTWO  
ART SHARE LA  
LOQUI  
GROUNDWORK COFFEE  
ARTS DISTRICT BREWING  
GROW THE PRODUCE SHOPE  
HENNESSEY + INGALLS  
BREAD LOUNGE  
KODO  
SOHO WAREHOUSE  
MIHAI NICODIM  
ACE MISSION STUDIOS  
STUDIO MLA  
EAST END STUDIOS  
COMMON WAVE  
LESET  
JFAK ARCHITECTS  
ITALIC  
CITIZENS OF HUMANITY

1451-1473 E. 4TH ST — LOS ANGELES



# Location

1. EAT DRINK AMERICANO
2. HAUSER, WIRTH & SHIMMEL GALLERY
3. MANUELA
4. SALT & STRAW
5. DEATH & CO
6. LA CHA CHA CHA
7. WURSTKUTCHE
8. ANGEL CITY BREWERY
9. EIGHTYTWO
10. ART SHARE LA
11. LOQUI
12. GROUNDWORK COFFEE
13. ARTS DISTRICT BREWING
14. GROW THE PRODUCE SHOPE
15. HENNESSEY + INGALLS
16. BREAD LOUNGE
17. KODO
18. SOHO WAREHOUSE
19. MIHAI NICODIM
20. ACE MISSION STUDIOS
21. STUDIO MLA
22. EAST END STUDIOS
23. COMMON WAVE
24. LESET
25. JFAK ARCHITECTS
26. CITIZENS OF HUMANITY



# Get In Touch



**CALEB HODGE**

KWP Real Estate

310.887.6413

[caleb.hodge@kwprealestate.com](mailto:caleb.hodge@kwprealestate.com)

DRE #02053613



**JACK NATHAN**

Odyssey Retail Advisors

248.915.0212

[jack@odysseyretail.com](mailto:jack@odysseyretail.com)

DRE #02216884

KWP Real Estate | 151 S. El Camino Drive, Beverly Hills, CA 90212 | 310-887-6400 | [kwprealestate.com](http://kwprealestate.com)

KWP Real Estate (Responsible Broker Identity, DRE #00659610) makes no warranty or representation as to the accuracy of the information contained herein.

Terms of sale or lease and availability of the property are subject to change or withdrawal without notice.