

116 Simcoe Street Toronto, Ontario



ALLIED

LEASING CONTACT

Sam Carr
D 647.409.5454 T 416.977.9002
scarr@alliedreit.com

With more than 200 properties across Canada, comprising more than 15 million square feet, Allied has earned a reputation for contributing to the vitality of Canada's most vibrant urban neighbourhoods, and for developing workplaces distinguished by thoughtful, human-scale design, proactive property management, and an unsurpassed occupant experience.

PROPERTY HIGHLIGHTS

Situated in Toronto's Entertainment District, on the north side of Adelaide Street, west of Simcoe Street. Office space available in a beautiful four-storey, brick-and-beam building.

AMENITIES

- 1 Passenger Elevator
- Security Fob System

TELECOM PROVIDERS

- Beanfield

TRANSIT

- 2 Minute Walk to PATH
- 11 Minute Walk to Union Station
- 2 Minute Walk to Streetcar
 - 504 King
 - 501 Queen
- 3 Minute Walk to St. Andrew Subway Station



SUITE INFORMATION

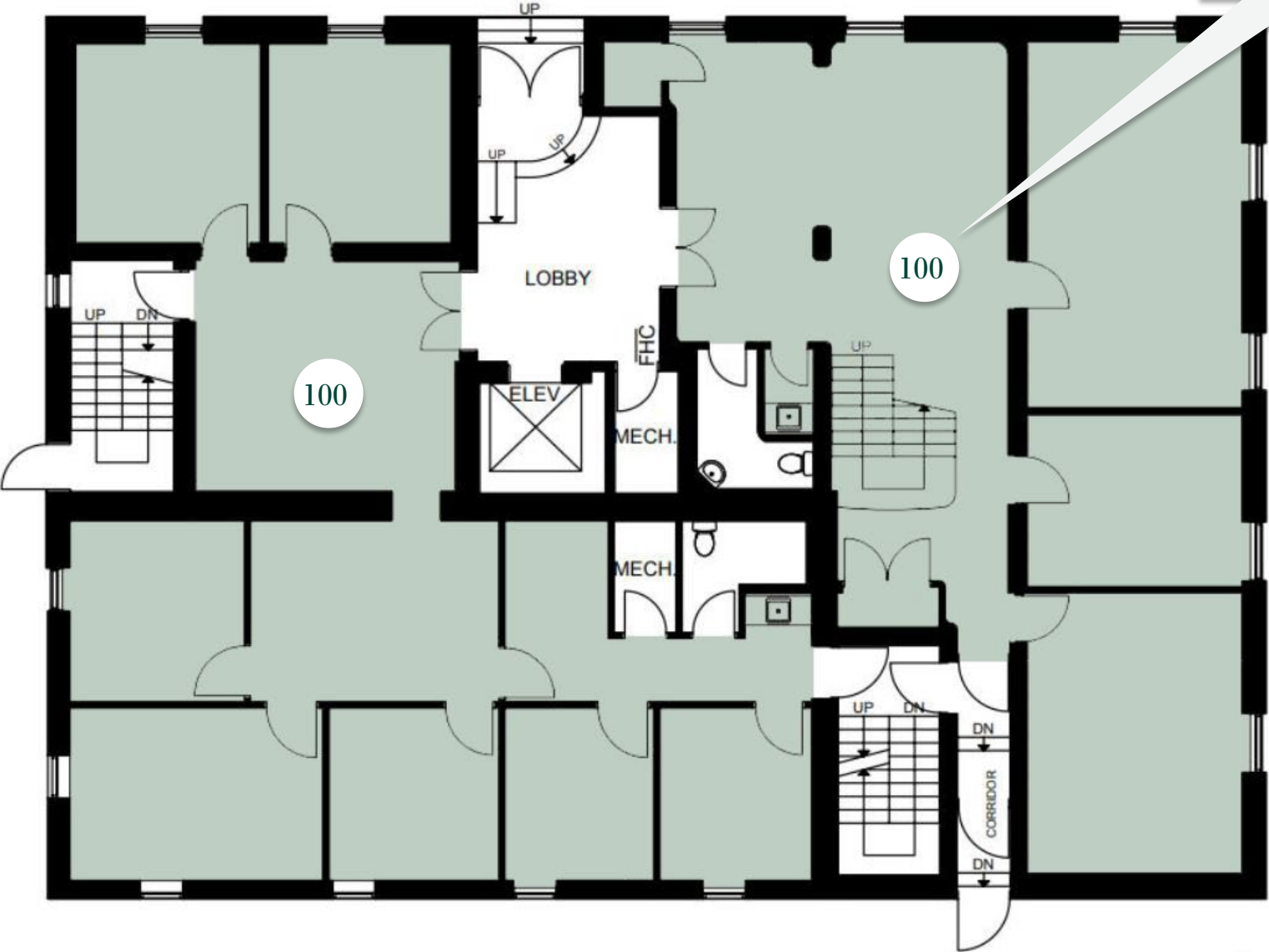
SUITE	SF	TYPE	AVAILABILITY	VIRTUAL TOUR
100	3,596	Office	Immediate	N/A
200	3,967	Office	Immediate	N/A
300	2,443	Office	30 Days Notice	N/A
301	1,568	Office	Immediate	N/A

Net Rent Call Leasing Contact

Additional Rent Includes Utilities
\$23.05 Excludes In-Suite Janitorial

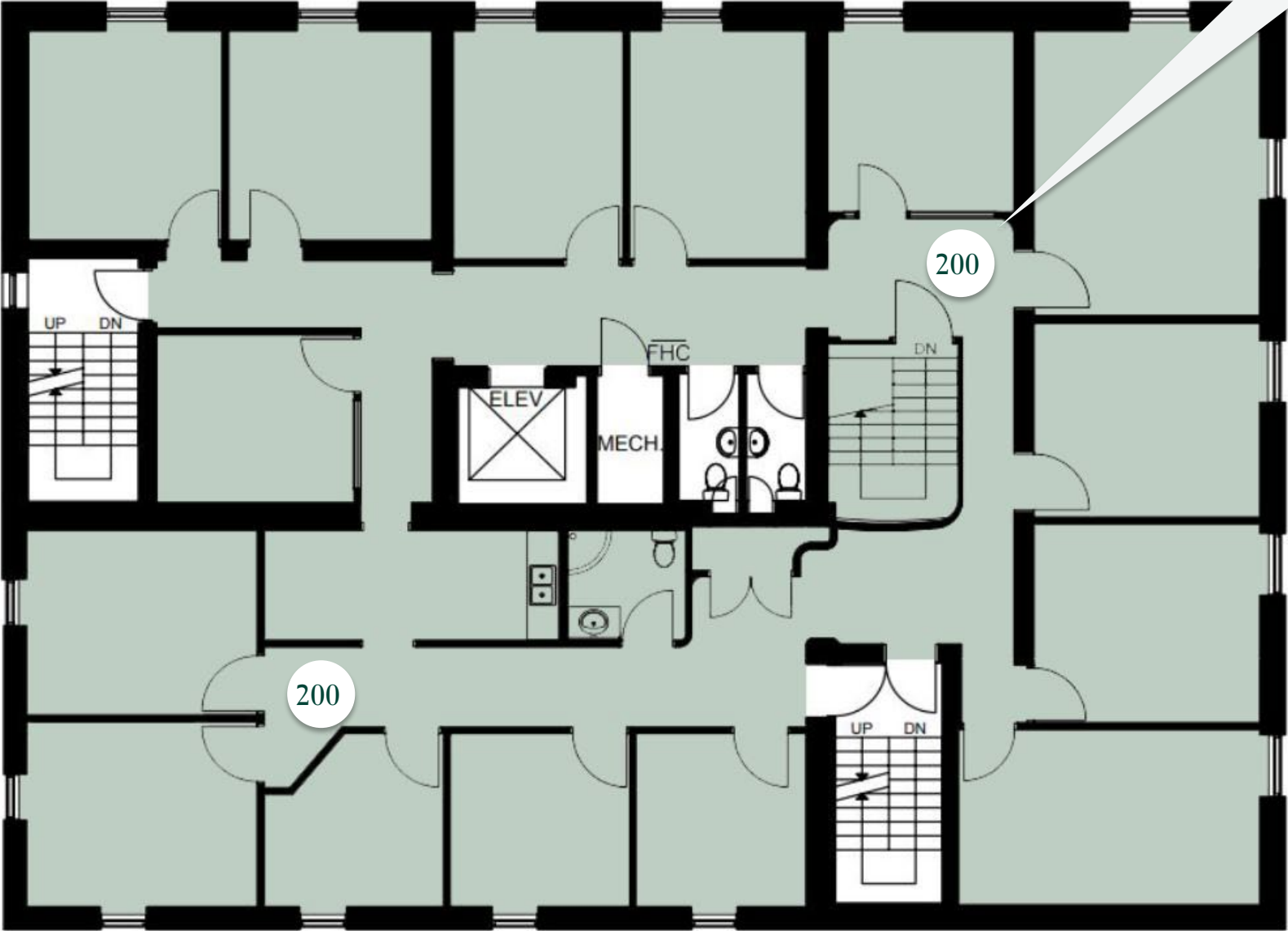
116 Simcoe Street
First Floor Floorplan

Suite 100
3,596 sf



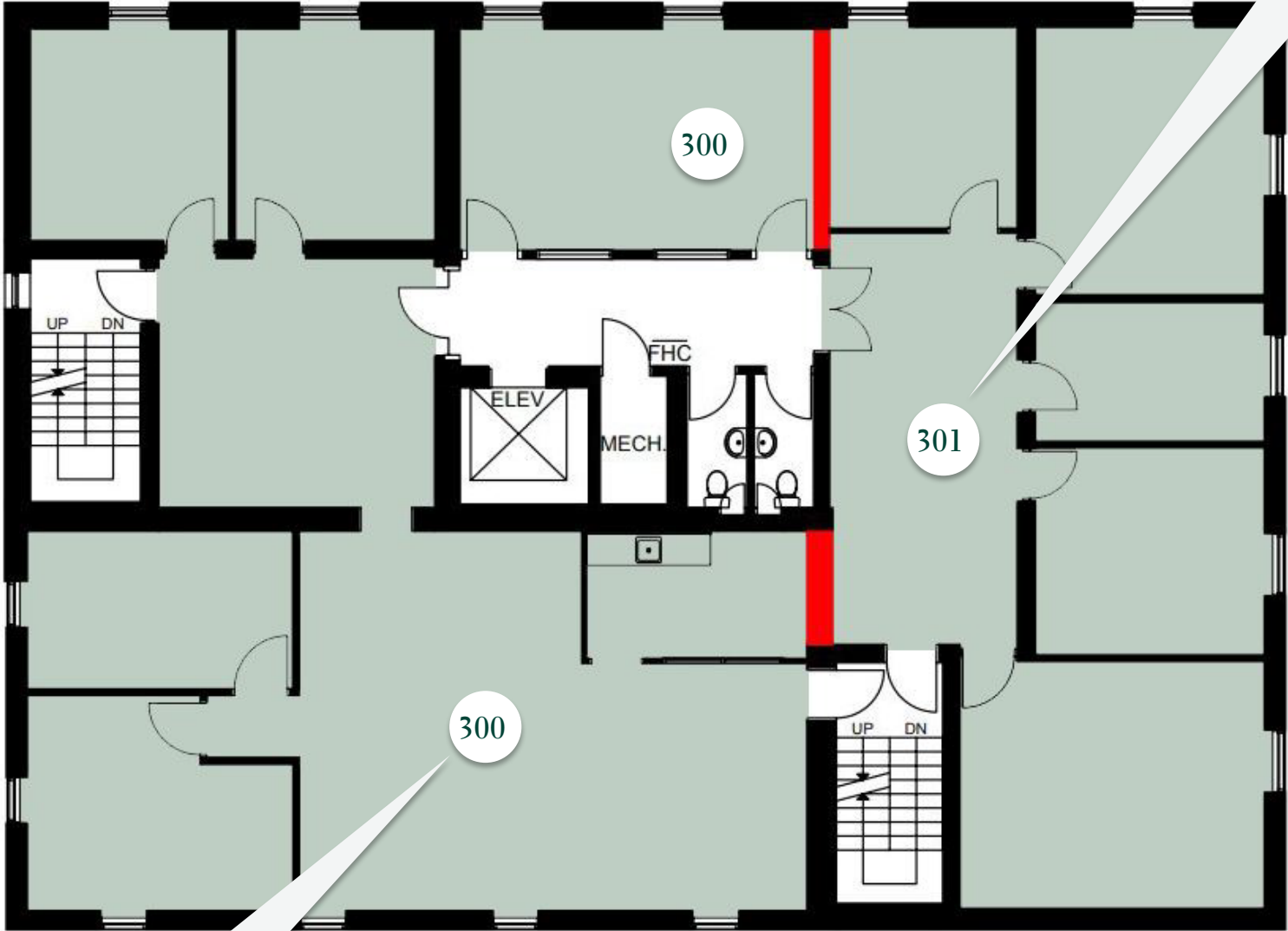
116 Simcoe Street
Second Floor Floorplan

Suite 200
3,967 sf



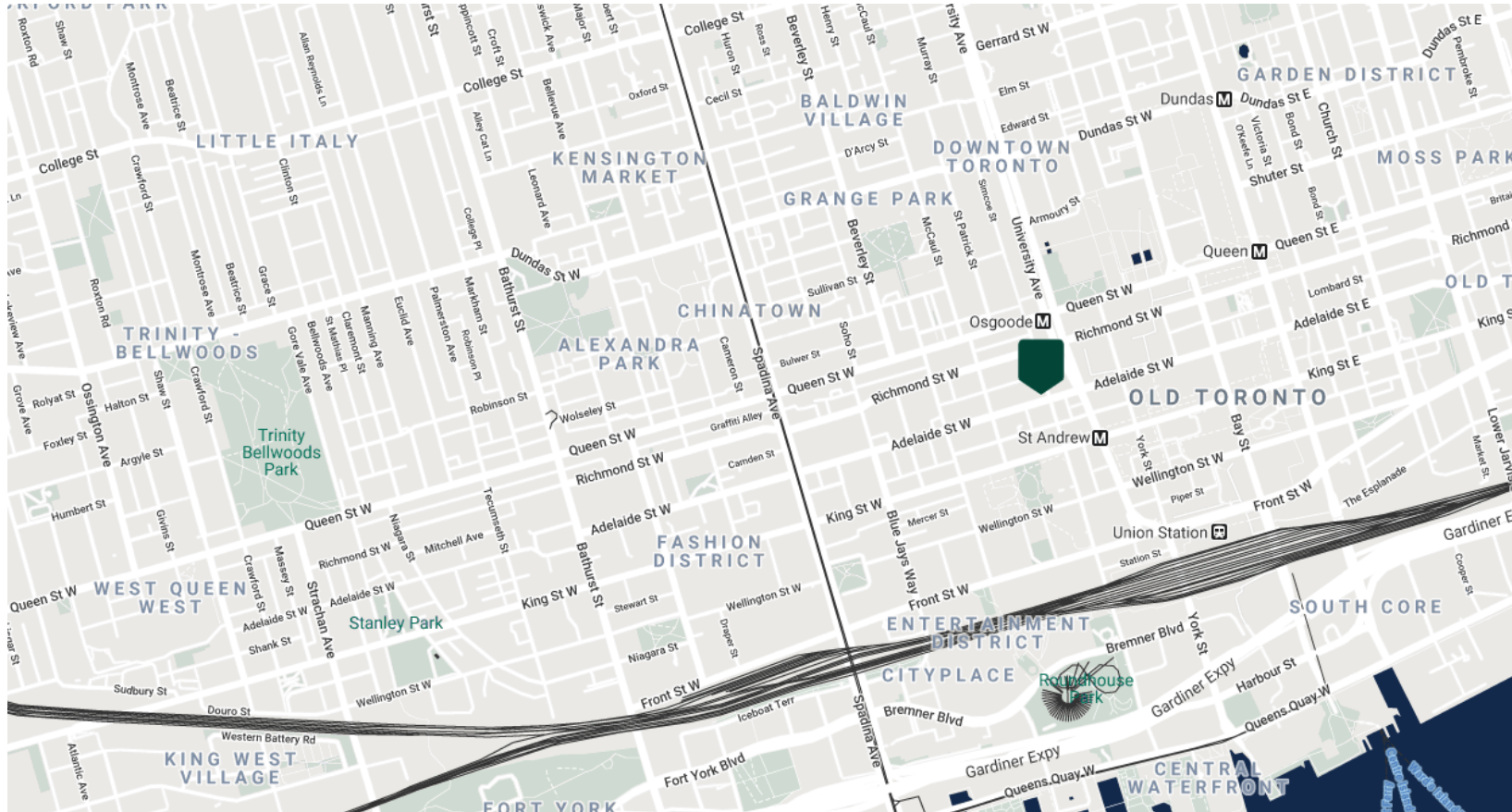
116 Simcoe Street
Third Floor Floorplan

Suite 301
1,568 sf



Suite 300
2,443 sf

ALLIED



LOCATION

Walk Score® | 99 Walker's Paradise
 Transit Score® | 100 Rider's Paradise
 Bike Score® | 94 Biker's Paradise
 Less than a one minute walk to streetcars

RESTAURANTS

Byblos
 General Assembly
 Imperfect
 FIGO
 La Carnita

HEALTH & WELLNESS

Barry's Bootcamp
 GoodLife
 Fitsquad
 Totum Life Science
 Spin Co.

SERVICES

LCBO
 Petro Canada
 RBC Royal Bank
 Hyatt Regency

ALLIED

ALLIED PROPERTIES

134 Peter St, Suite 1700 Toronto, On M5v 2H2
T 416 977 9002 F 416 306 8704
alliedreit.com