

2300 @ 89TH
FREESTANDING BUILDING
2300 NW 89th Place // Doral, Florida



**CUSHMAN &
WAKEFIELD**

**24,800 SF
FOR SUBLEASE**



BUILDING TOP SIGNAGE AVAILABLE

PROPERTY HIGHLIGHTS

- 24,800 SF office space for sublease
- Entire third floor available
- Full building back-up generator/
redundancy
- 8:1,000 Leased parking ratio
- Parking includes surface spaces
- Freestanding building
- Prominent building exposure
- Multiple conference rooms
- CCTV security system
- Immediate occupancy available
- Located in America's Gateway Park
- Sublease term through September 2031
- Sublease Rate: \$36.00/SF MG

For more information, please contact:

MATTHEW A. BITTEL, SIOR
Managing Director
+1 305 804 1104
matthew.bittel@cushwake.com

STUART GORDON, SIOR
Executive Managing Director
+1 305 333 2919
stuart.gordon@cushwake.com

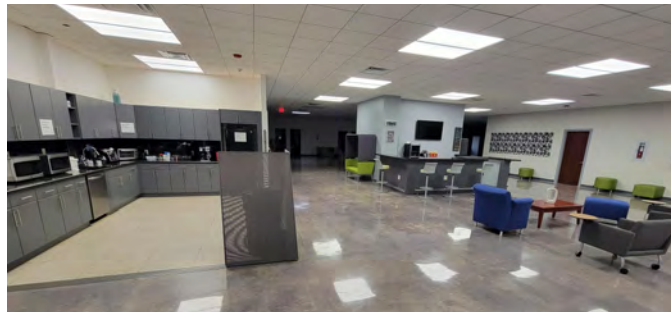
CUSHMAN & WAKEFIELD US, INC.
9960 NW 116TH Way | Suite 2
Miami, FL 33178
cushwakesouthfl.com | @CushWakeSouthFL

2300 @ 89TH

FREESTANDING BUILDING

2300 NW 89th Place // Doral, Florida

24,800 SF FOR SUBLEASE



For more information, please contact:

MATTHEW A. BITTEL, SIOR
Managing Director
+1 305 804 1104
matthew.bittel@cushwake.com

STUART GORDON, SIOR
Executive Managing Director
+1 305 333 2919
stuart.gordon@cushwake.com



CUSHMAN & WAKEFIELD US, INC.

9960 NW 116TH Way | Suite 2
Miami, FL 33178

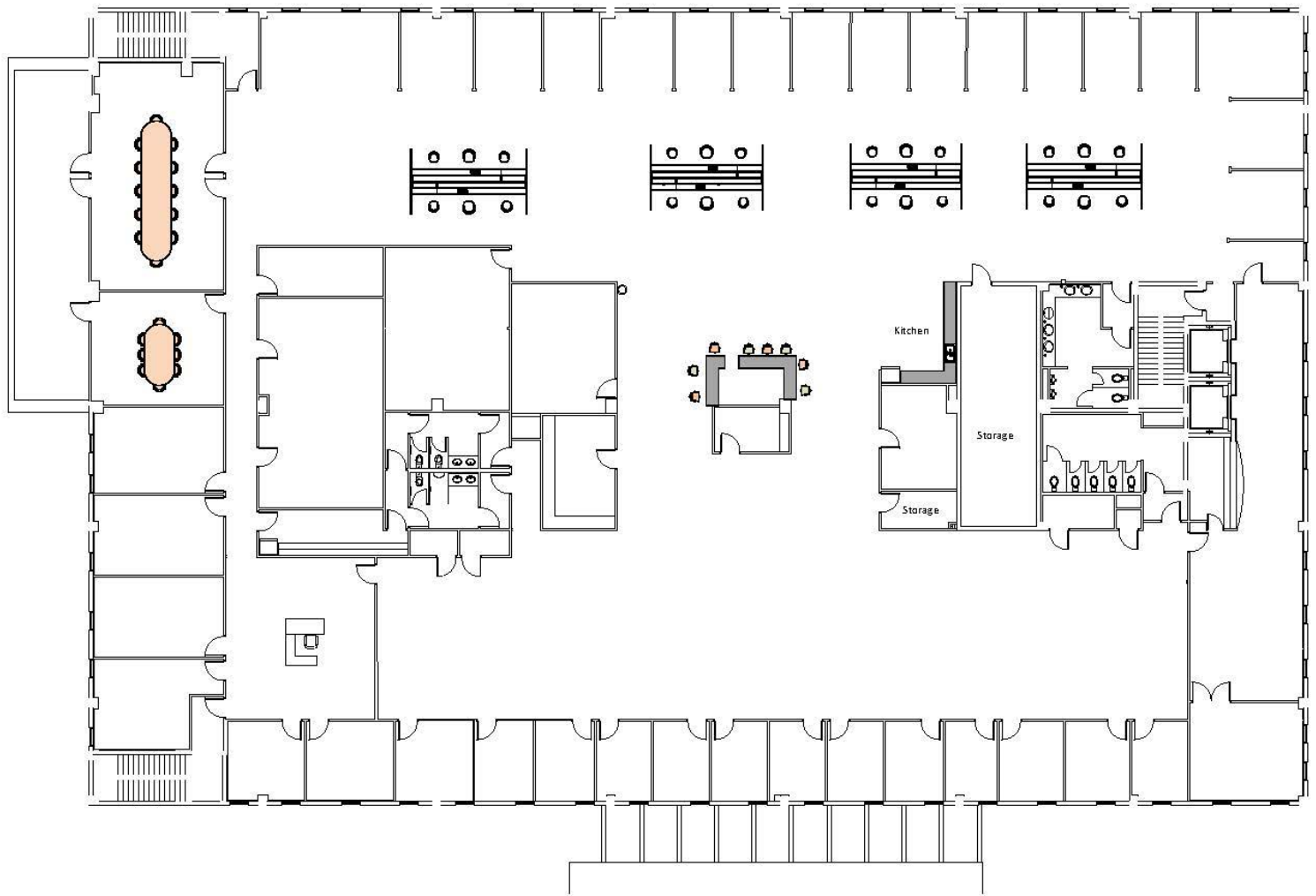
cushwakesouthfl.com | [@CushWakeSouthFL](#)

2300 @ 89TH

FREESTANDING BUILDING

2300 NW 89th Place // Doral, Florida

**24,800 SF
FOR SUBLEASE**



For more information, please contact:

MATTHEW A. BITTEL, SIOR
Managing Director
+1 305 804 1104
matthew.bittel@cushwake.com

STUART GORDON, SIOR
Executive Managing Director
+1 305 333 2919
stuart.gordon@cushwake.com

CUSHMAN & WAKEFIELD US, INC.
9960 NW 116TH Way | Suite 2
Miami, FL 33178

cushwakesouthfl.com | @CushWakeSouthFL