



334 Grand Street, Retail

(Corner of Grand Street & Ludlow Street)

As Exclusive Agents, We Are
Pleased To Offer The Following:

Retail Space For Lease

 Douglas Elliman
Commercial

575 MADISON AVENUE, NEW YORK, NEW YORK 10022

334 Grand Street, Retail

One of kind opportunity to lease corner retail space located in the heart of the Lower East Side neighborhood offering high visibility to exceptional street traffic.

Location Northwest Corner of Grand Street and Ludlow Street

Space Ground Level - 900 SF
Lower Level - 700 SF

Frontage 65 feet Corner Wrap

Rental Upon Request

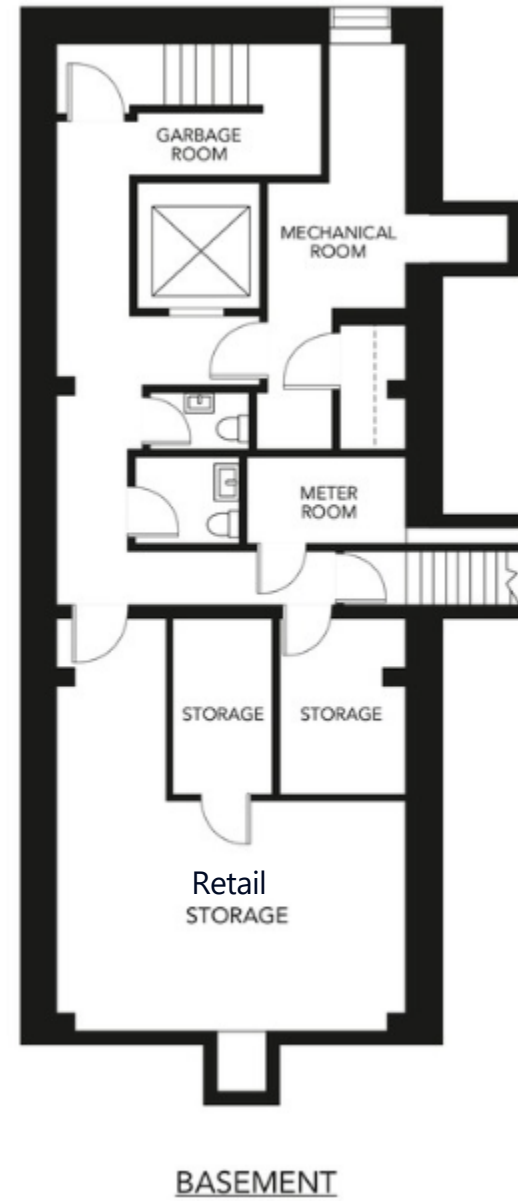
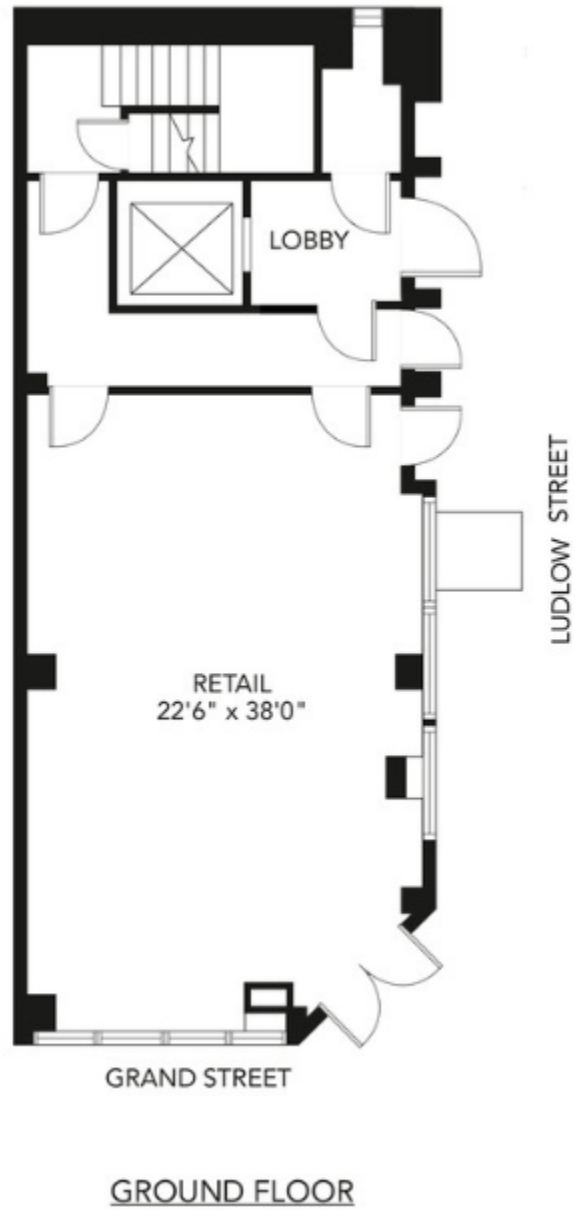
Possession Arranged

- Features
- All Uses Considered
 - Non-Vented, Cooking Allowed
 - Split System Cooling & Forced Air Heating
 - Generous Natural Light
 - Outdoor Café Seating Potential
 - Sidewalk Access to Lower Level for Efficient Load-In/Load-Out
 - Private Restroom
 - Nearby proximity to F, M, J, Z, B, D (Delancey St-Essex St and Grand St stations)



Space Rendering

334 Grand Street, Retail



344 Grand Street, Retail

NOTABLE NEIGHBORHOOD ATTRACTIONS AND NEIGHBORS



TRADER JOE'S

VITAL Climbing Gym

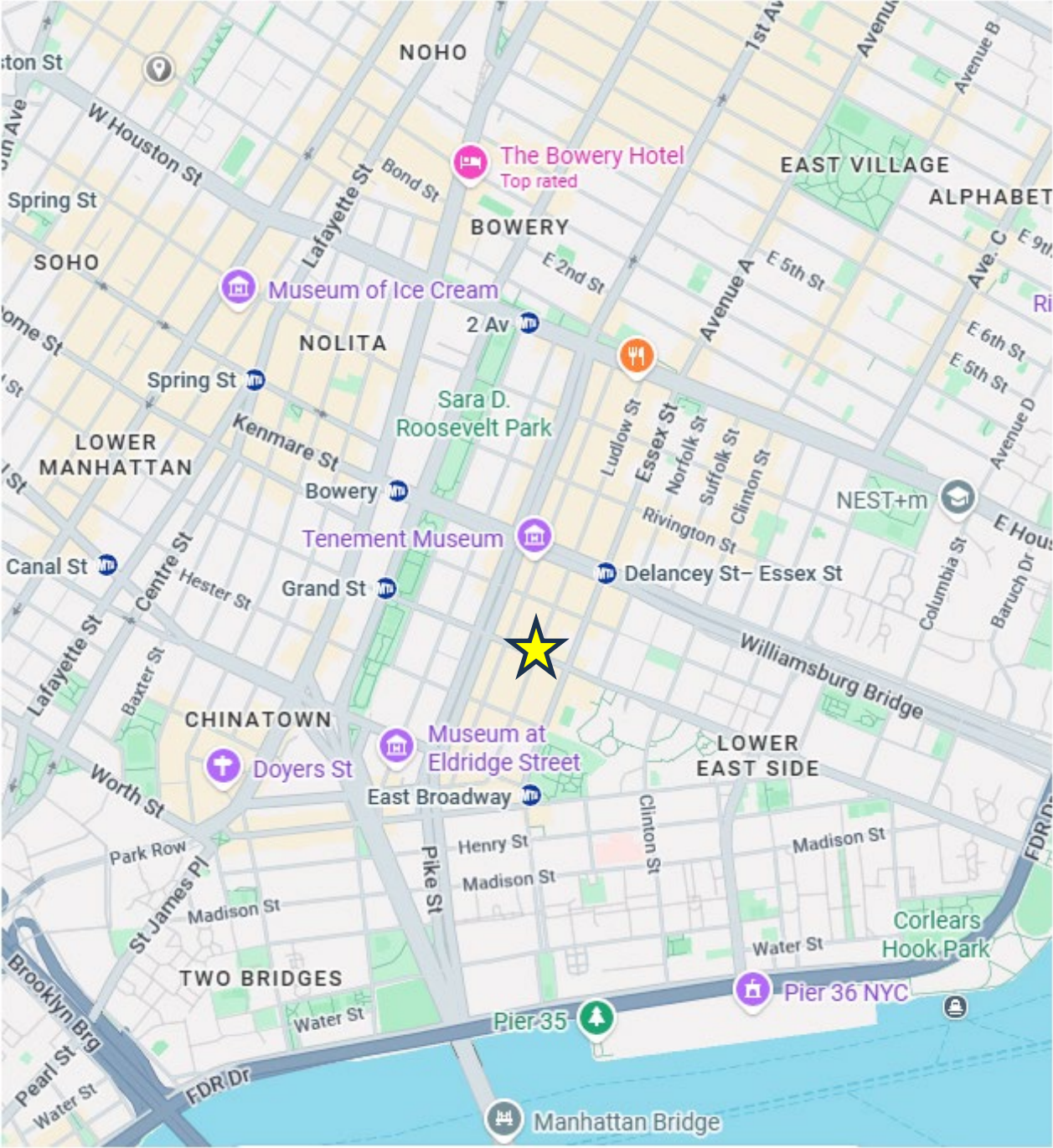


TENEMENT MUSEUM

METROGRAPH

RUSS & DAUGHTERS





For further information and inspection, please contact:

Louis Puopolo
Licensed Associate Real Estate Broker
917 374-0099
louis.puopolo@elliman.com



©2026 DOUGLAS ELLIMAN COMMERCIAL, LLC. ALL RIGHTS RESERVED. THE INFORMATION CONTAINED IN THIS DOCUMENT IS PROPRIETARY TO DOUGLAS ELLIMAN COMMERCIAL, LLC AND SHALL BE USED SOLELY FOR THE PURPOSES OF EVALUATING THIS PROPOSAL. ALL SUCH DOCUMENTATION AND INFORMATION REMAINS THE PROPERTY OF DOUGLAS ELLIMAN COMMERCIAL, LLC AND SHALL BE KEPT CONFIDENTIAL. REPRODUCTION OF ANY PART OF THIS DOCUMENT IS AUTHORIZED ONLY TO THE EXTENT NECESSARY FOR ITS EVALUATION. IT IS NOT TO BE SHOWN TO ANY THIRD PARTY WITHOUT THE PRIOR WRITTEN AUTHORIZATION OF DOUGLAS ELLIMAN COMMERCIAL, LLC. ALL INFORMATION CONTAINED HEREIN IS FROM SOURCES DEEMED RELIABLE; HOWEVER, NO REPRESENTATION OR WARRANTY IS MADE AS TO THE ACCURACY THEREOF.