

# 2241-43 Frederick Douglass Blvd

Southwest Corner of West 121st St



## WE ARE PLEASED TO OFFER THE FOLLOWING RETAIL/OFFICE/MEDICAL SPACE FOR LEASE:

Space: Ground Floor: 2,287 sq. ft. (divisible)  
Asking Rent: Upon Request  
Frontage: 40 feet on Frederick Douglass Blvd  
64 feet on West 121st St  
Ceiling Height: Approximately 10 feet  
Possession: July 1, 2025  
Neighbors: Petit Poussins, Vintage Harlem, Starbuck's, Chase Bank  
Comments: 

- Newly renovated space
- Prime corner location
- Divisible to 1,100 sq. ft.
- Multiple means of egress

Neighborhood  
Highlights: 

- Located on the "Gold Coast" of West Harlem
- Vibrant neighborhood
- In close proximity to B, C subway lines

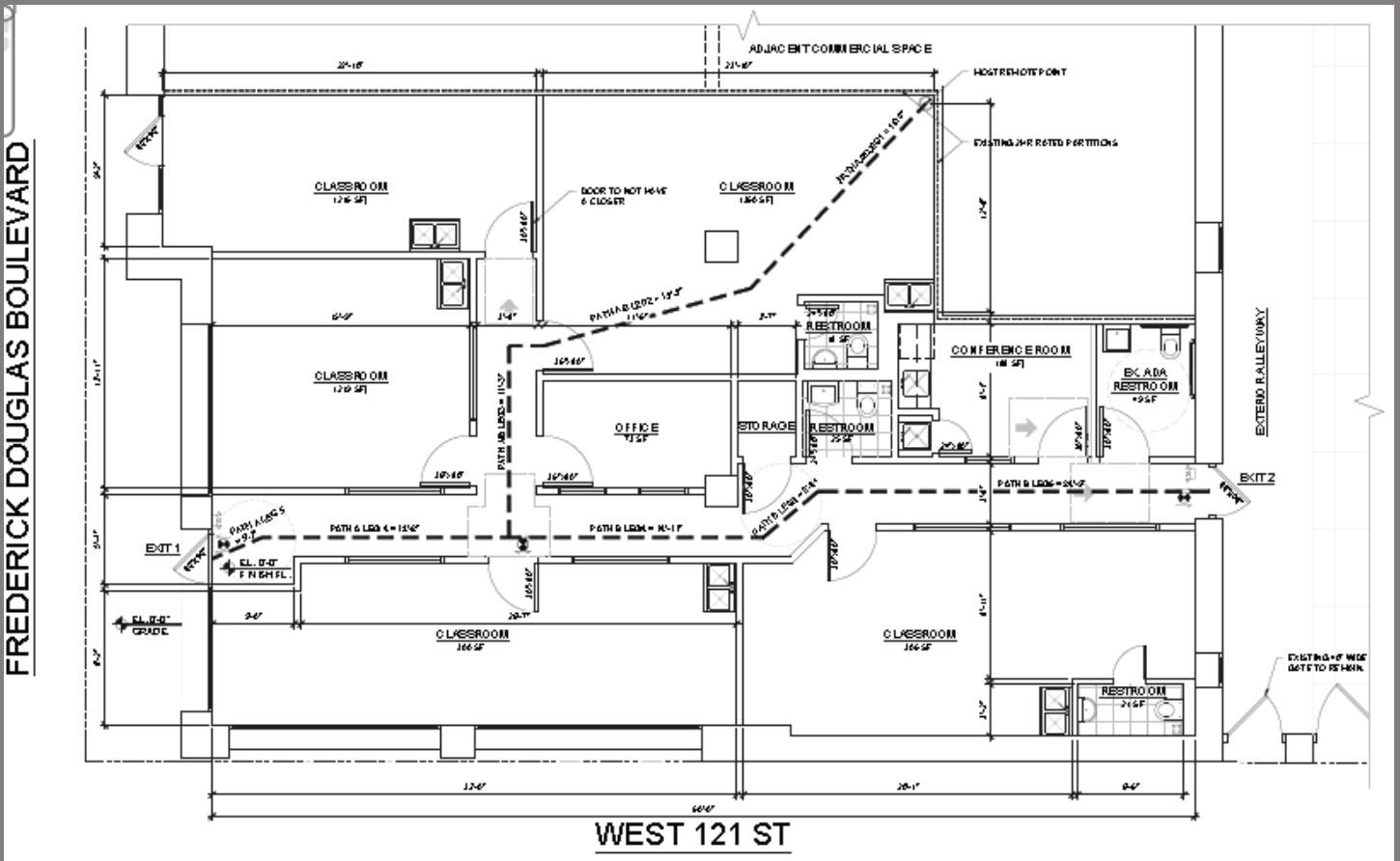
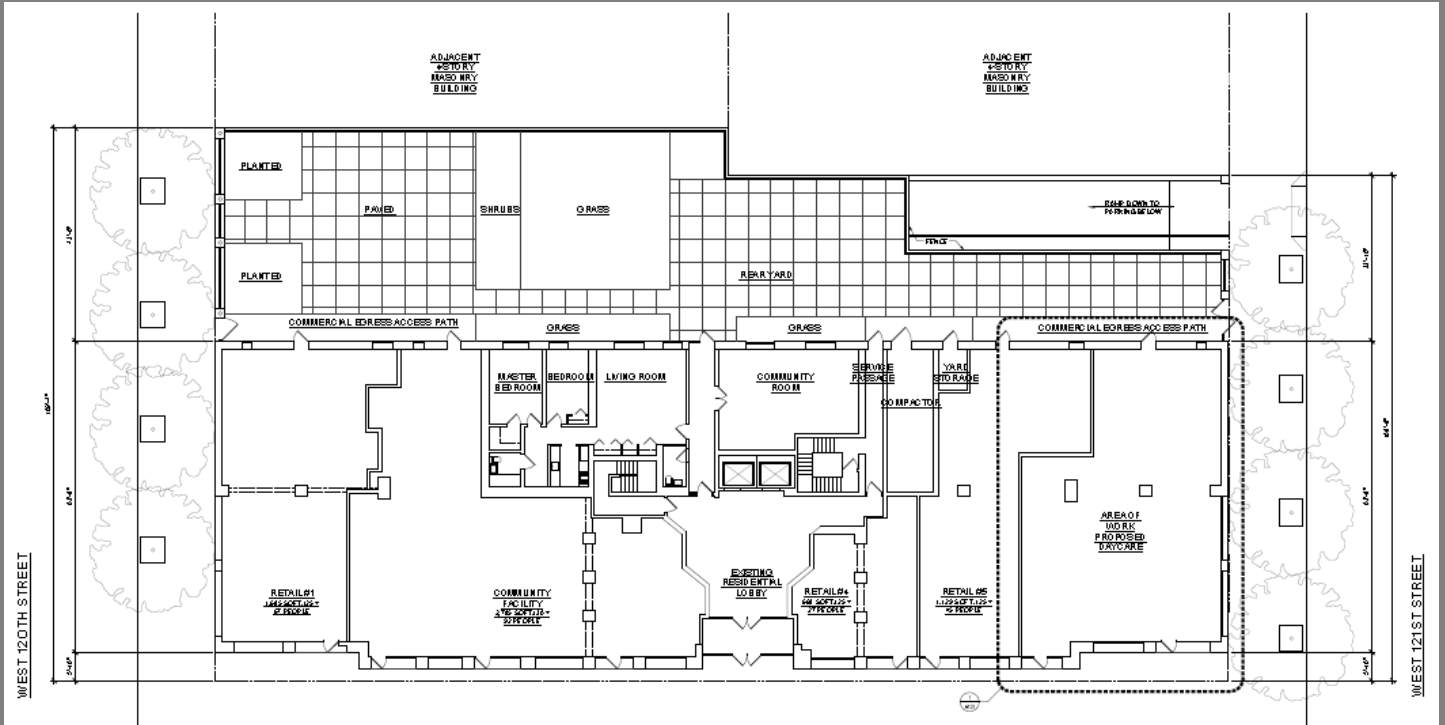
Matthew Gorman  
212.251.0626  
mgorman@aspire-associates.com

Christopher Bruggers  
212.644.5015  
cbruggers@aspire-associates.

Exclusive Agent  
**ASPIRE**  
ASSOCIATES

# 2241-43 FREDERICK DOUGLASS BLVD

Southwest Corner of West 121st St



Matthew Gorman  
212.251.0626  
mgorman@aspire-associates.com

Christopher Bruggers  
212.644.5015  
cbruggers@aspire-associates.com

Exclusive Agent  
**ASPIRE**  
ASSOCIATES