

2391 The Alameda, Santa Clara

920± SF in Freestanding Office Building For Lease



Suite 100

100

2391
THE ALAMEDA

DAVID TAXIN
Partner
Lic. #00983163
408.966.5919
dtaxin@moinc.net

AUSTIN CHAPARRO
Senior Associate
Lic. #02121723
925.785.4842
austin@moinc.net

GRANT MESSINGER
Senior Associate
Lic. #02094614
925.719.7080
grant@moinc.net

MEACHAM/OPPENHEIMER, INC.
8 N San Pedro St. #300
San Jose, CA 95110
Tel. 408.378.5900
www.moinc.net





Available Suite: Suite 100 | 920± SF (1st Floor)

Rental Rate: \$1.95/SF + \$0.70 NNN

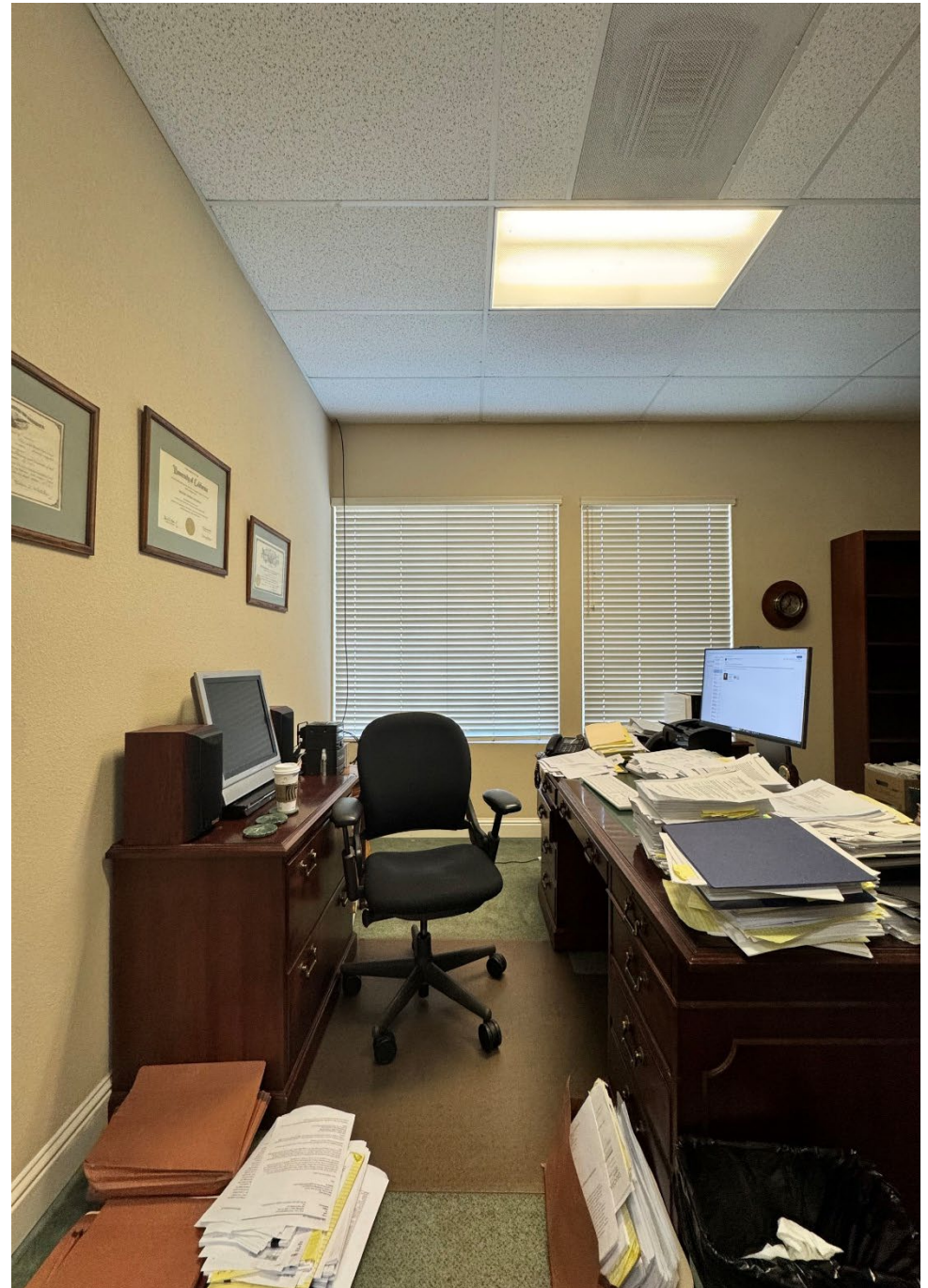
Zoning: MUCC - Mixed Use Community Commercial

2 Private Offices/Common Area Kitchen/Bathroom

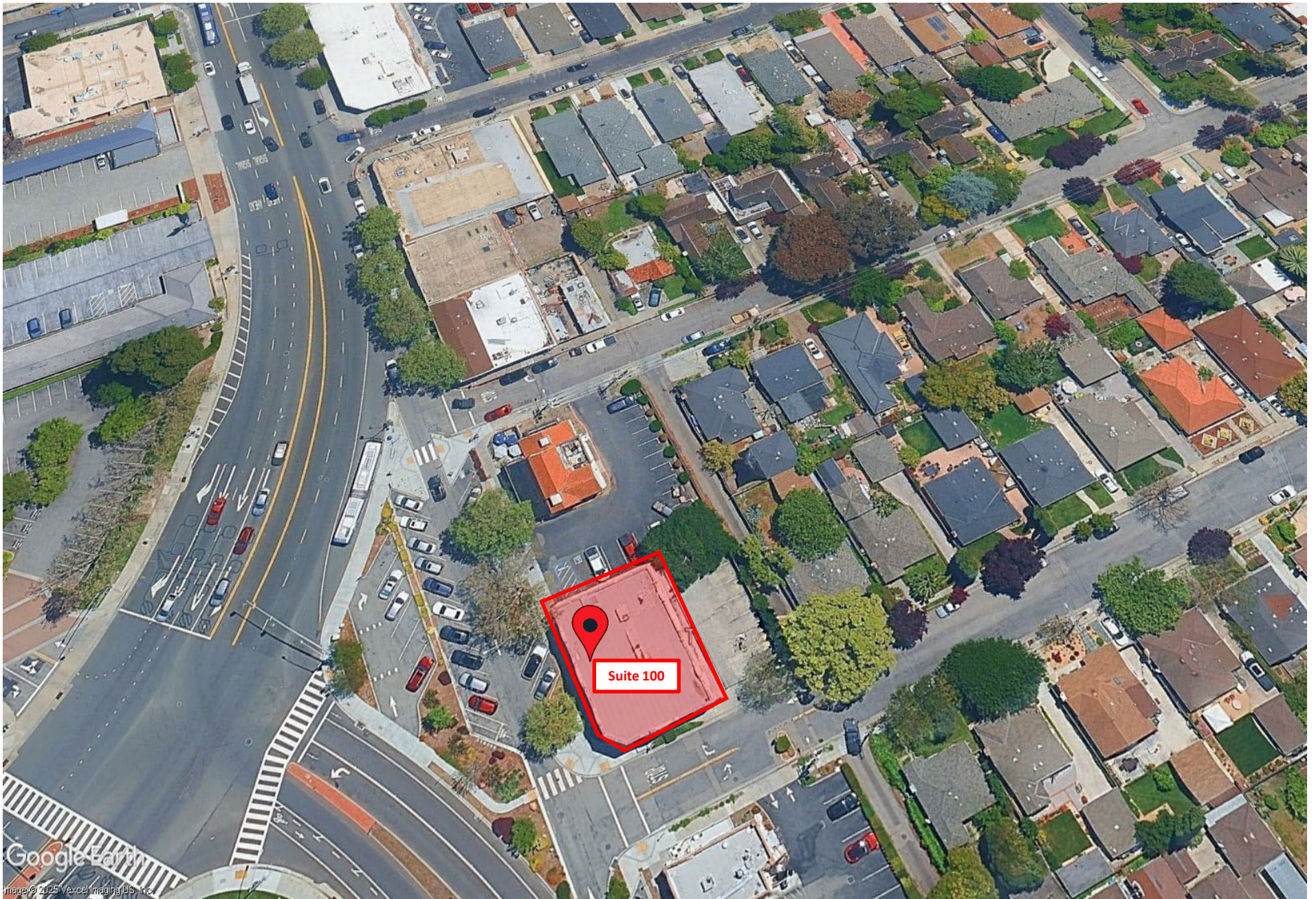
Location Highlights:

- At The Junction Of El Camino Real & The Alameda, Next To Santa Clara University
- Strategically Located Near Highways 87 And 880









DEMOGRAPHICS



2025 SUMMARY	1-MILE	3-MILE	5-MILE
Population	21,447	205,896	637,325
Households	7,370	81,276	234,679
Average Household Size	2.45	2.45	2.65
Owner Occupied Housing Units	4,811	43,308	106,898
Renter Occupied Housing Units	6,686	49,979	114,116
Median Age	32.0	36.2	36.4
Median Household Income	\$136,956	\$137,609	\$148,711
Average Household Income	\$193,139	\$186,055	\$198,817

2391 The Alameda Santa Clara



DAVID TAXIN

Partner
Lic. #00983163
408.966.5919
dtaxin@moinc.net

AUSTIN CHAPARRO

Senior Associate
Lic. #02121723
925.785.4842
austin@moinc.net

GRANT MESSINGER

Senior Associate
Lic. #02094614
925.719.7080
grant@moinc.net

MEACHAM/OPPENHEIMER, INC.
8 N San Pedro St. #300
San Jose, CA 95110
Tel. 408.378.5900
www.moinc.net

