

For Lease

Office / Medical

1,148 - 3,262 SF | \$18.00/SF



Springs Medical & Professional Center

679-697 Douglas Avenue, Altamonte Springs, Florida 32714

Property Highlights

- Springs Medical & Professional Center is a 10-building office/medical center on 2.87 acres; Zoning: Office
- Entire individual free-standing buildings available
- Great location in Altamonte Springs, with immediate access to SR 436 (Semoran Blvd) and I-4
- Prominent monument signage on Douglas Avenue with building signage opportunities on I-4
- Less than 2 miles to AdventHealth Altamonte Springs Hospital, Cranes Roost, Uptown Altamonte, Altamonte Mall and the Altamonte SunRail station
- Beautifully landscaped; ample parking (5.43/1,000 SF)

AVAILABLE SPACES

| Space | Lease Rate | Size (SF) |
|-------------------------------|---------------|-----------|
| 689 Douglas Avenue | \$18.00 SF/yr | 3,262 |
| 691 Douglas Avenue, Suite 103 | \$18.00 SF/yr | 1,148 |



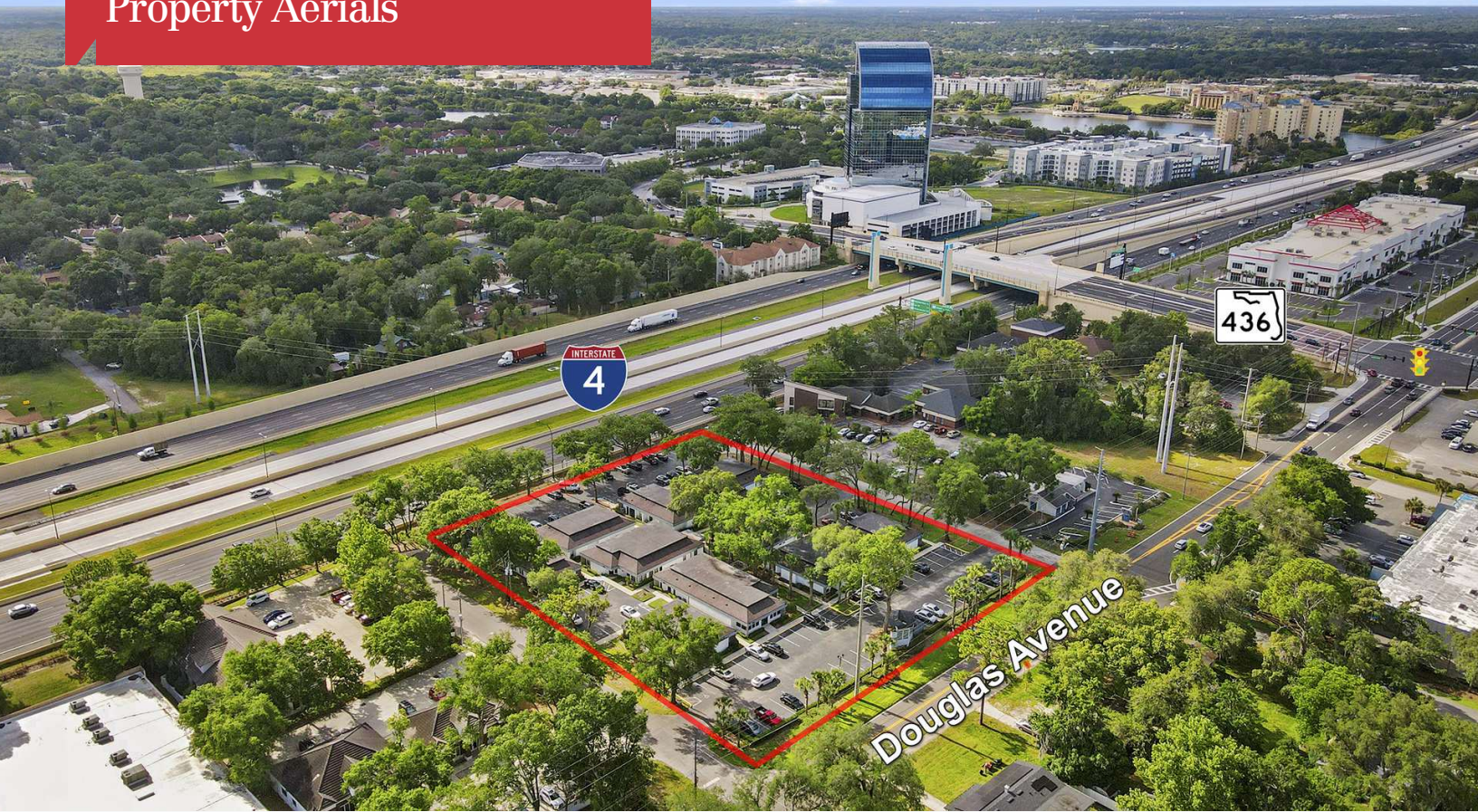
Lease Rate: \$18.00 / SF NNN (CAM: \$5.26/SF)

For more information

Stian Funk

O: 407 949 0747
sfunk@realvest.com

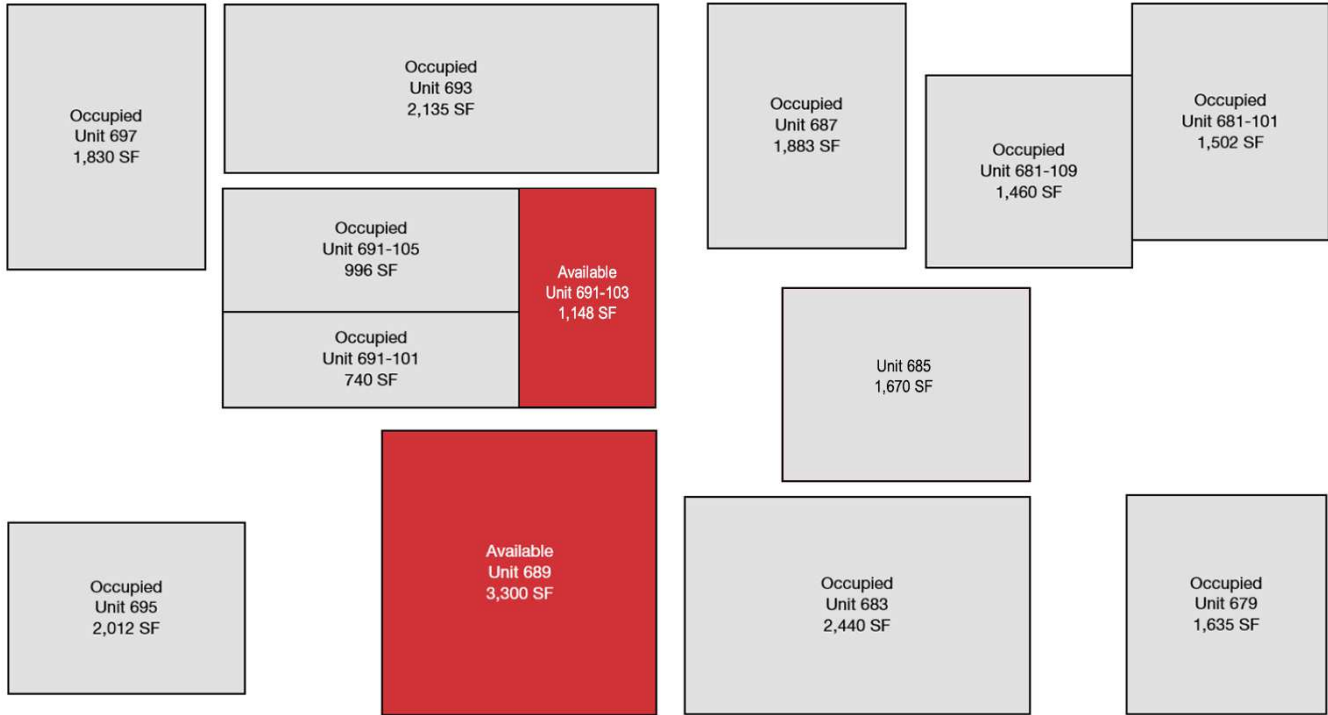
Property Aerials



Property Photos



I-4

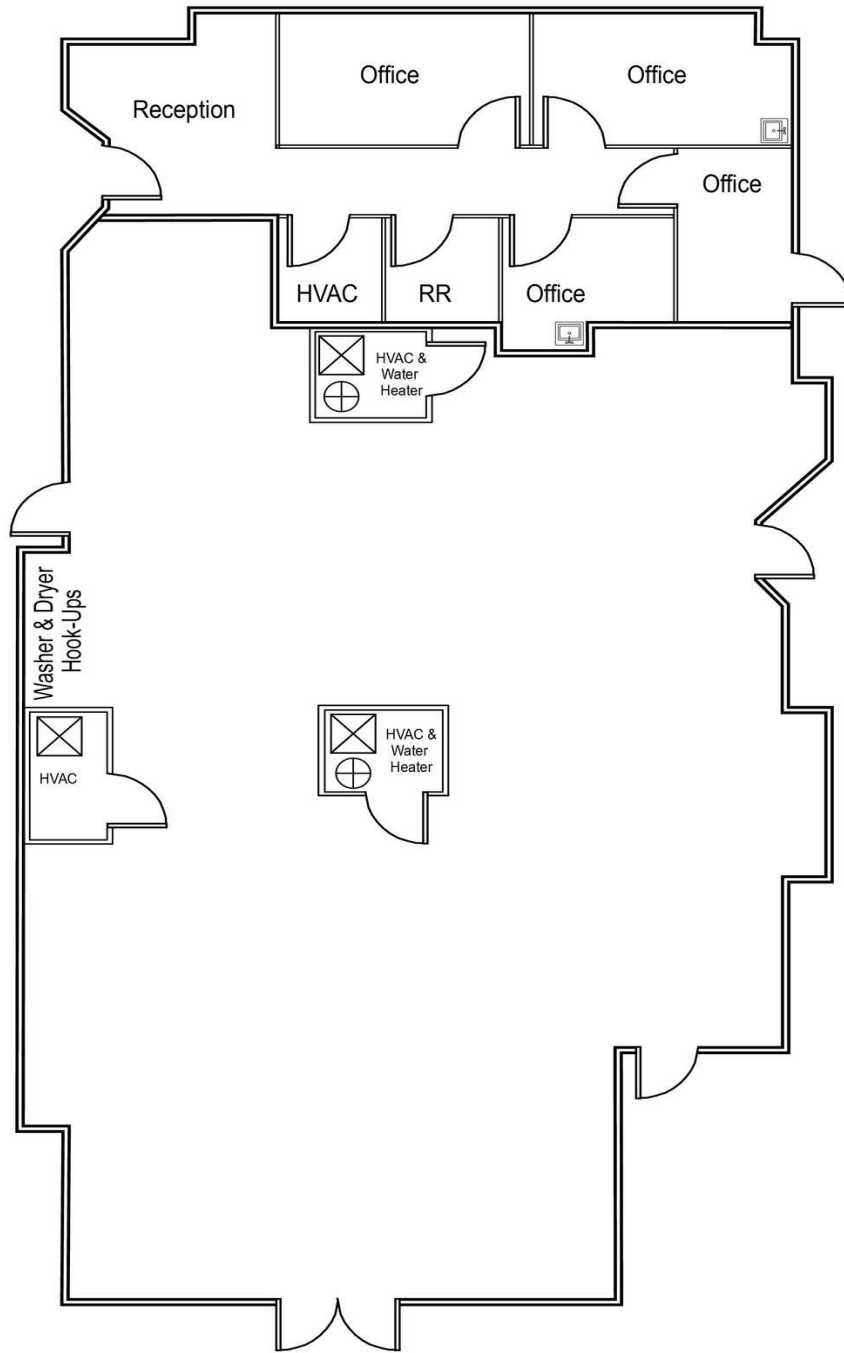


Douglas Avenue

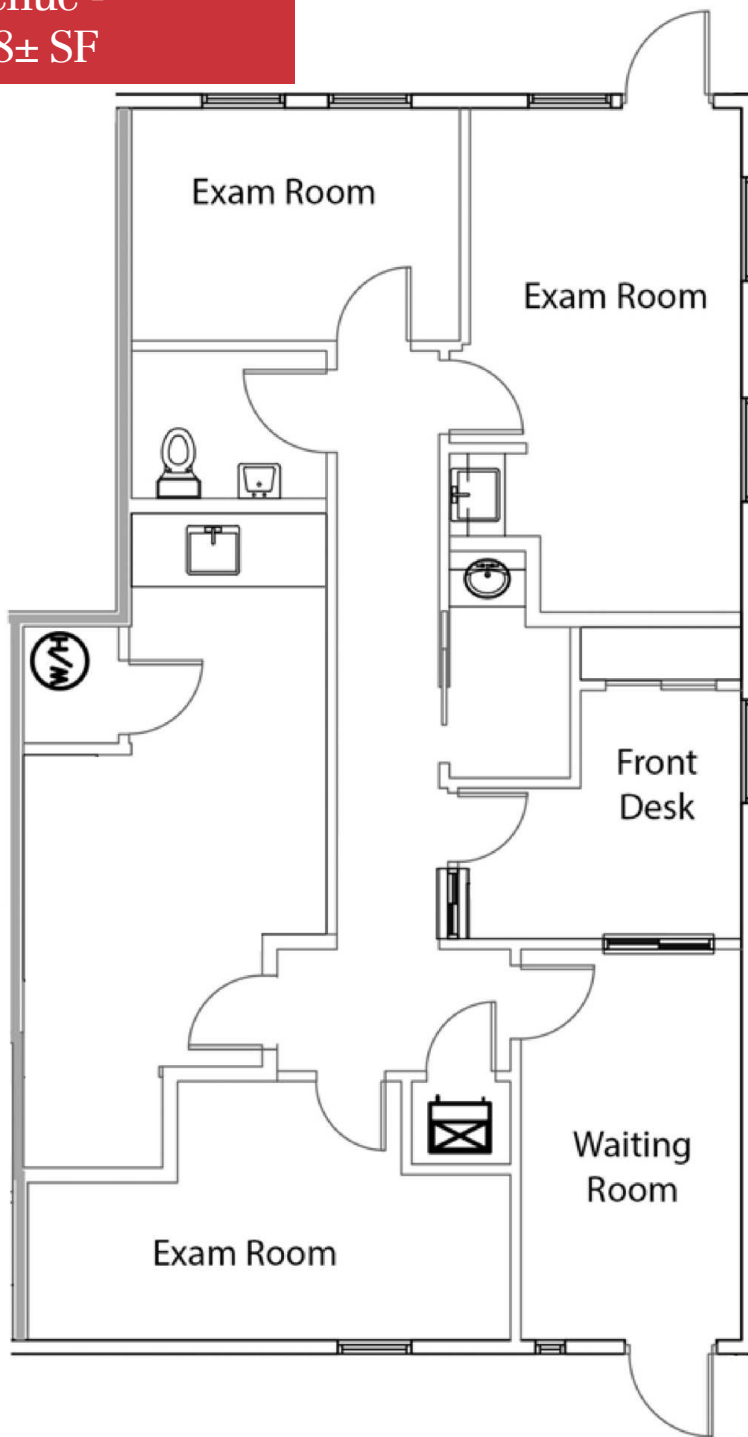
AVAILABLE SPACES

| SUITE | SIZE (SF) | LEASE TYPE | LEASE RATE | DESCRIPTION |
|-------------------------------|-----------|------------|---------------|------------------|
| 689 Douglas Avenue | 3,262 SF | NNN | \$18.00 SF/yr | Shell condition |
| 691 Douglas Avenue, Suite 103 | 1,148 SF | NNN | \$18.00 SF/yr | Medical / Office |

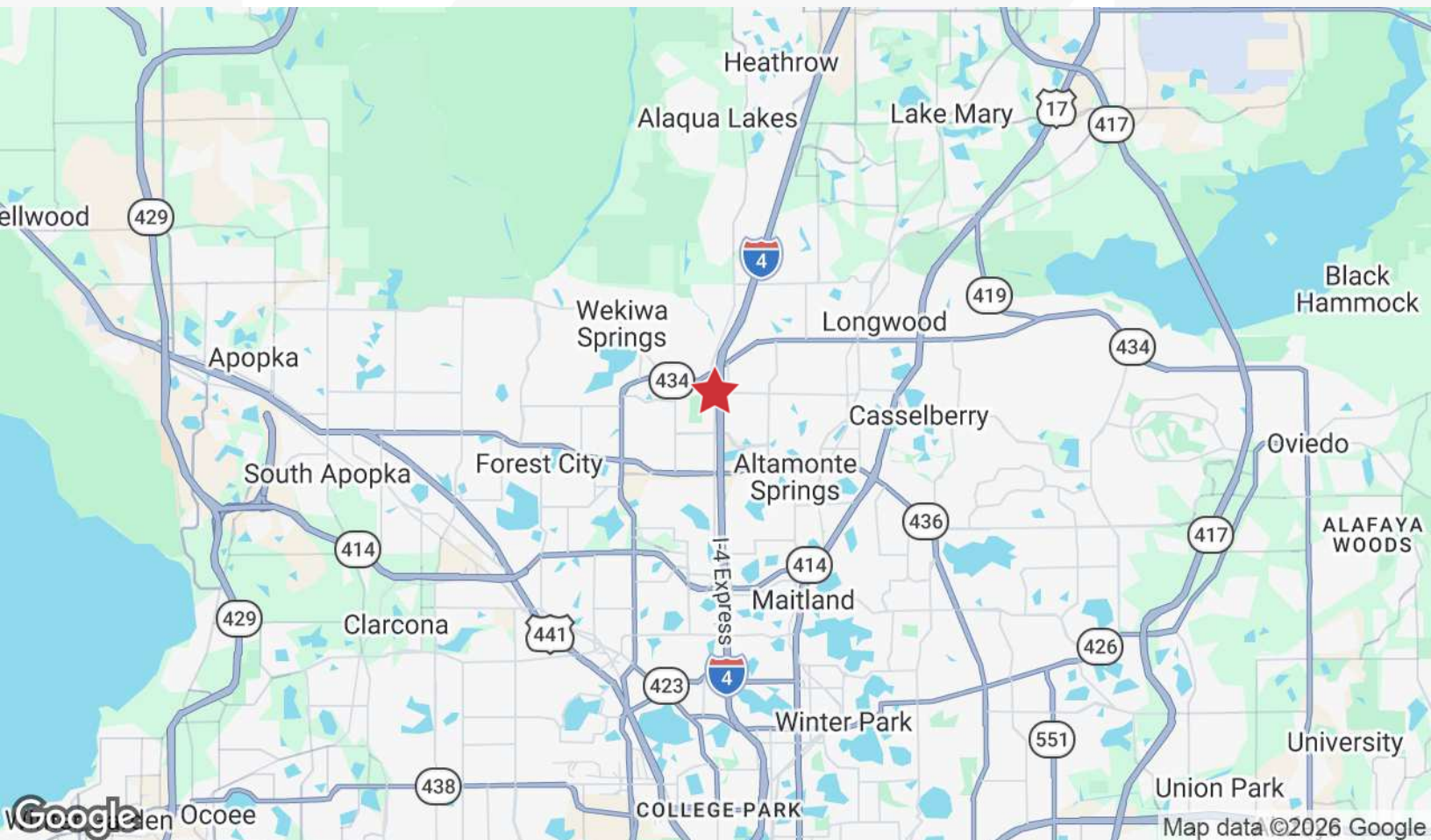
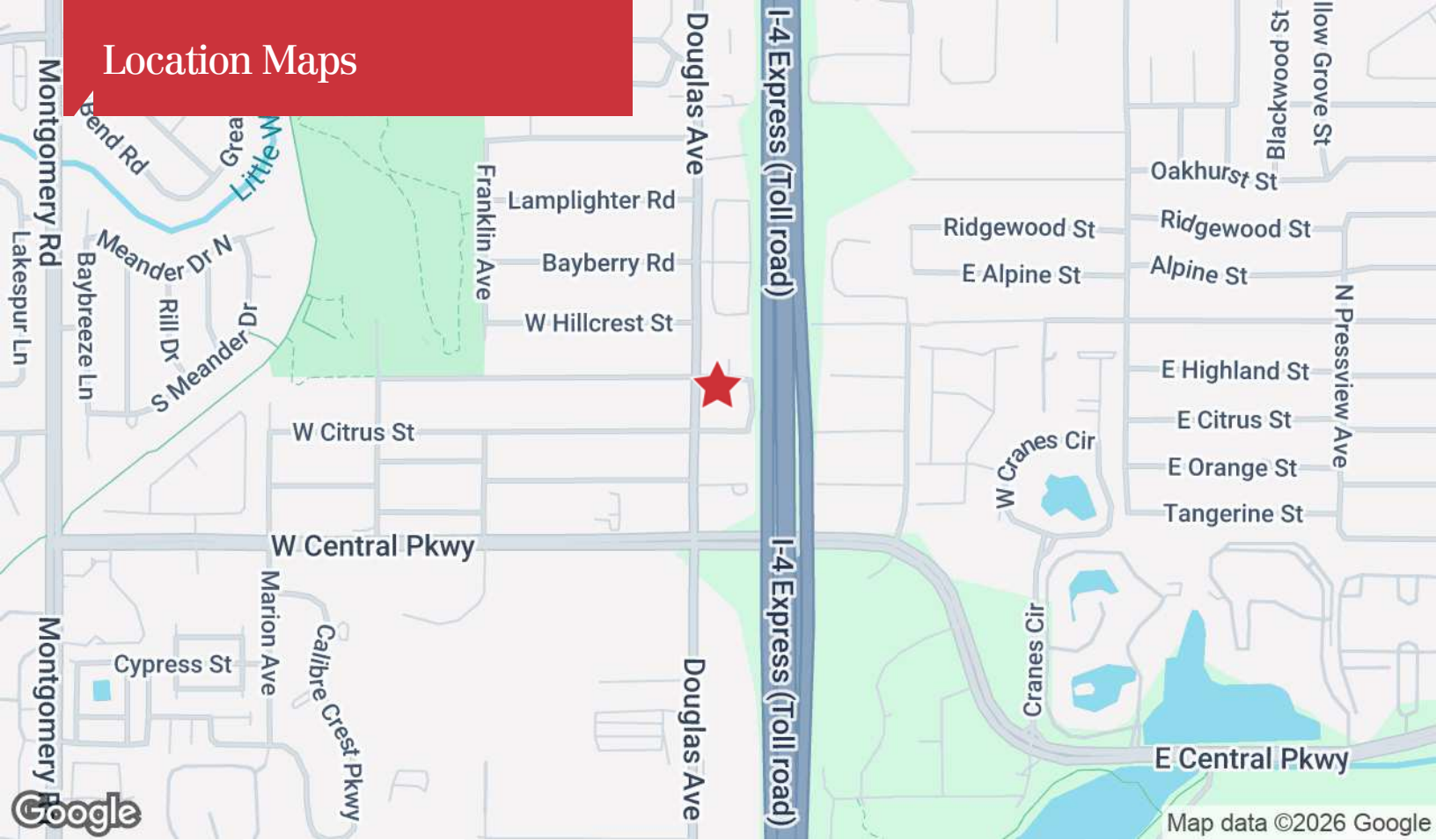
689 Douglas Avenue -
3,262± SF / Shell Condition



691 Douglas Avenue -
Suite 103 - 1,148± SF



Location Maps



The information contained herein has been given to us by the owner of the property or other sources we deem reliable. We have no reason to doubt its accuracy, but we do not guarantee it. All information should be verified prior to purchase or lease. Unless otherwise noted, the property is being offered as-is, where is, with all faults.

1800 Pembroke Drive, Suite 350
Orlando, FL 32810
407 875 9989 tel
narealvest.com

