

PARKWAY



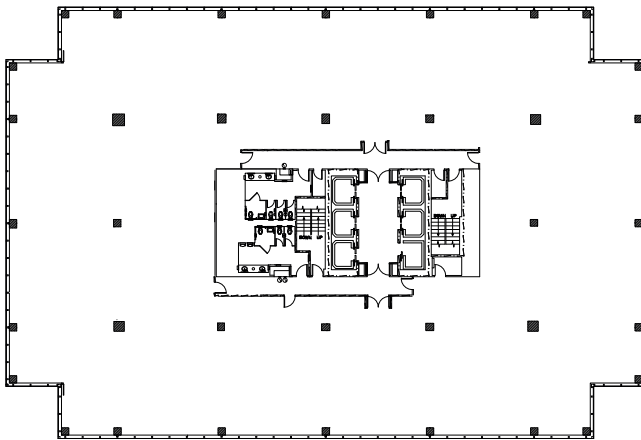
501  
EAST  
KENNEDY  
DOWNTOWN TAMPA

Nancy Herz  
813.505.7962 | [nherz@pky.com](mailto:nherz@pky.com)

## ATRIUM



## TYPICAL FLOOR



## LOCATION



# 501 East Kennedy

## SPECIFICATIONS

Location:	501 E. Kennedy Blvd. Tampa, FL
Submarket:	Downtown Tampa
Size:	296,000 ± RSF
Stories:	20
Parking:	1.3/1,000 RSF w/ additional parking nearby

## FEATURES & AMENITIES

- + Conference Center
- + Fitness Center
- + Collaboration area with Wi-Fi
- + Self-serve market
- + On-site restaurant
- + Full-service bank with ATM
- + On-site security
- + Integrated parking
- + After-hours card access
- + Professional property management team

## LOCATION

- + Highly accessible with convenient routes to I-275 and Crosstown Expressway
- + 50+ Dining Options within 1/2 mile
- + 12 Hotels within 1 mile
- + 45+ Housing Options within 1 mile
- + 50+ Parking Facilities within 1 mile

## WALKABLE TO

- + Tampa Riverwalk
- + Curtis Hixon Waterfront Park
- + Straz Performing Arts Center
- + Tampa Museum of Art
- + Water Street
- + Amalie Arena
- + Federal & County Courthouses
- + Marion Transit Center
- + TECO Streetcar System