

# 6010 EXECUTIVE BOULEVARD

N O R T H B E T H E S D A



Leasing Information:  
301.304.8300

**Ethan Bernardi**   **Nathan Bortnick**  
301.304.8397   301.304.8392  
ebernardi@lpc.com   nbortnick@lpc.com

## Lincoln

Lincoln Property Company  
1101 Wootton Pkwy Suite 410  
Rockville, MD 20854

[www.lpc.com](http://www.lpc.com)



<b>Availabilities</b>	<b>SF</b>
Suite 202	3,351 SF
Suite 300	1,572 SF
Suite 304	2,180 SF
Suite 702	1,279 SF
8th Floor	13,000 SF
9th Floor	13,014 SF

**Property Highlights**

- Lobby renovations: new flooring, lighting fixtures, digital directory and flat screen TV.
- Open-door micro market café.
- Landscaped patio area with outdoor seating.
- North Bethesda Metro within walking distance (0.06 mi).
- Easy access to I-270, I-370, I-495 and Rockville Pike.
- Local ownership and management.
- Nearby: Pike & Rose, Bethesda North Marriott Hotel and Conference Center.

# 6010 EXECUTIVE BOULEVARD

NORTH BETHESDA



**CONFERENCE CENTER**

**360°**



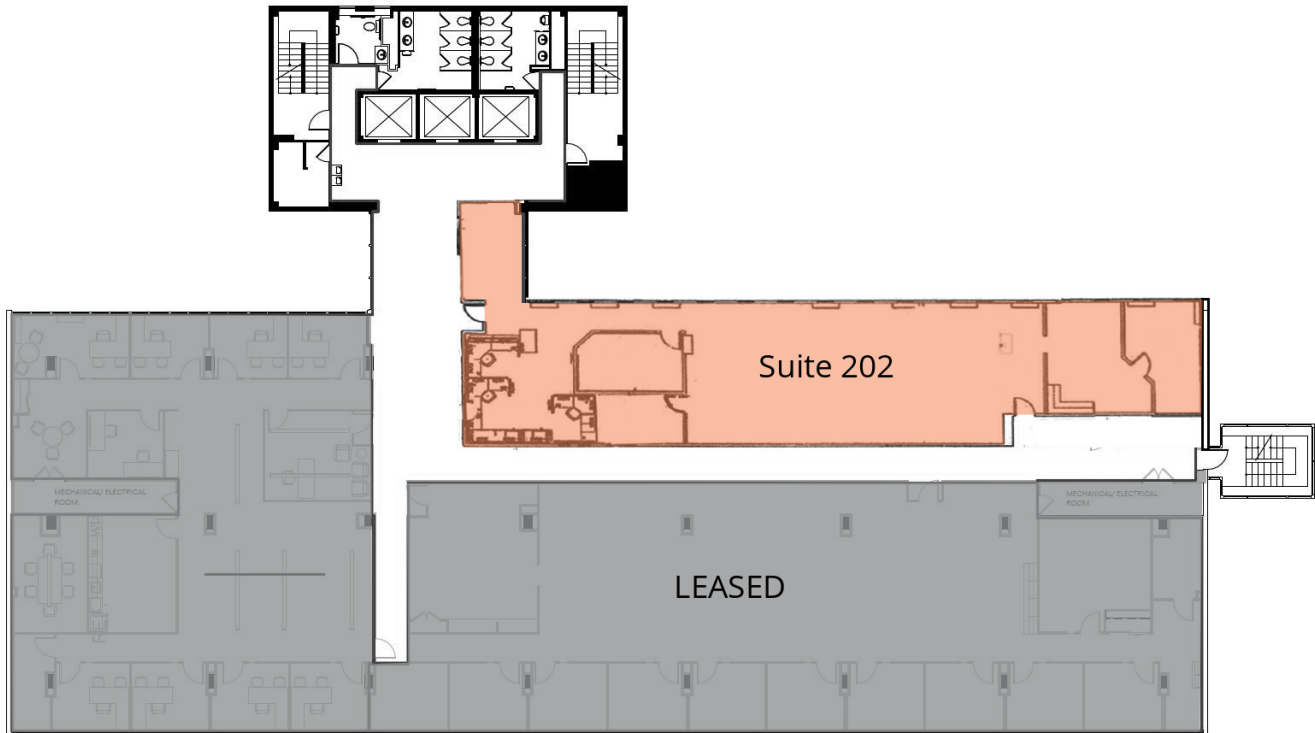
**OPEN DOOR  
MICRO MARKET CAFÉ**

**360°**





Suite 202  
3,351 SF



Suite	Size	Description
■ Suite 202	3,351 SF	Available Immediately

# 6010 EXECUTIVE BOULEVARD

NORTH BETHESDA



3rd Floor



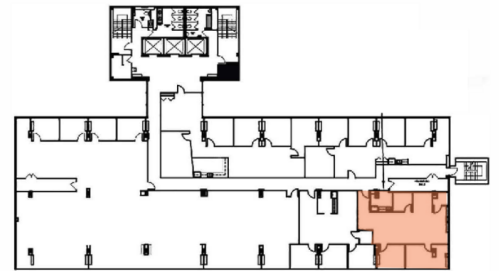
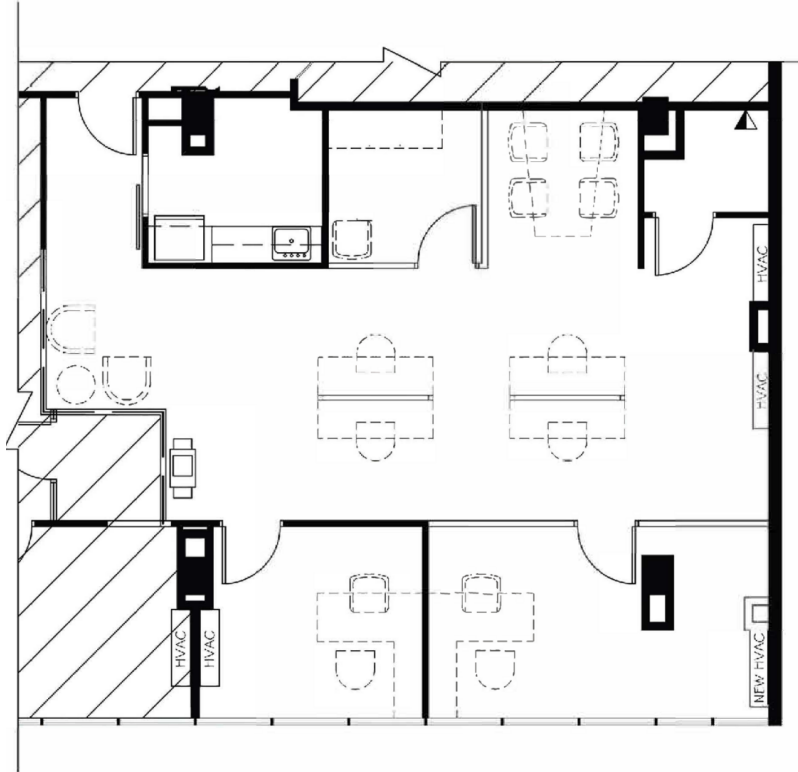
Suite	Size	Description
■ Suite 300	1,572 SF	Future spec suite. Available Immediately.
■ Suite 304	2,180 SF	Available Immediately

# 6010 EXECUTIVE BOULEVARD

NORTH BETHESDA



Suite 702  
1,279 SF

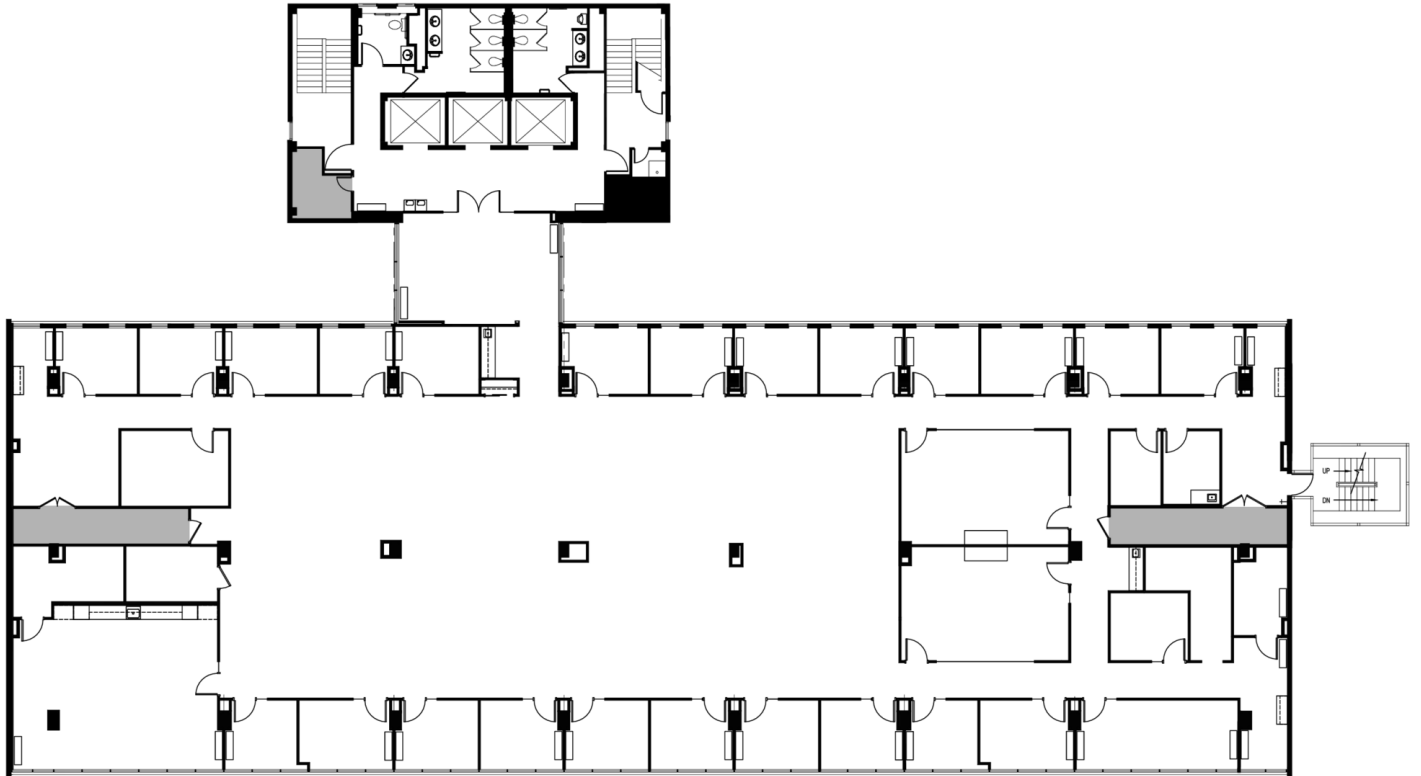


Suite	Size	Description
■ Suite 702	1,279 SF	Available Immediately

**6010 EXECUTIVE BOULEVARD**  
N O R T H B E T H E S D A



8th Floor  
13,000 SF



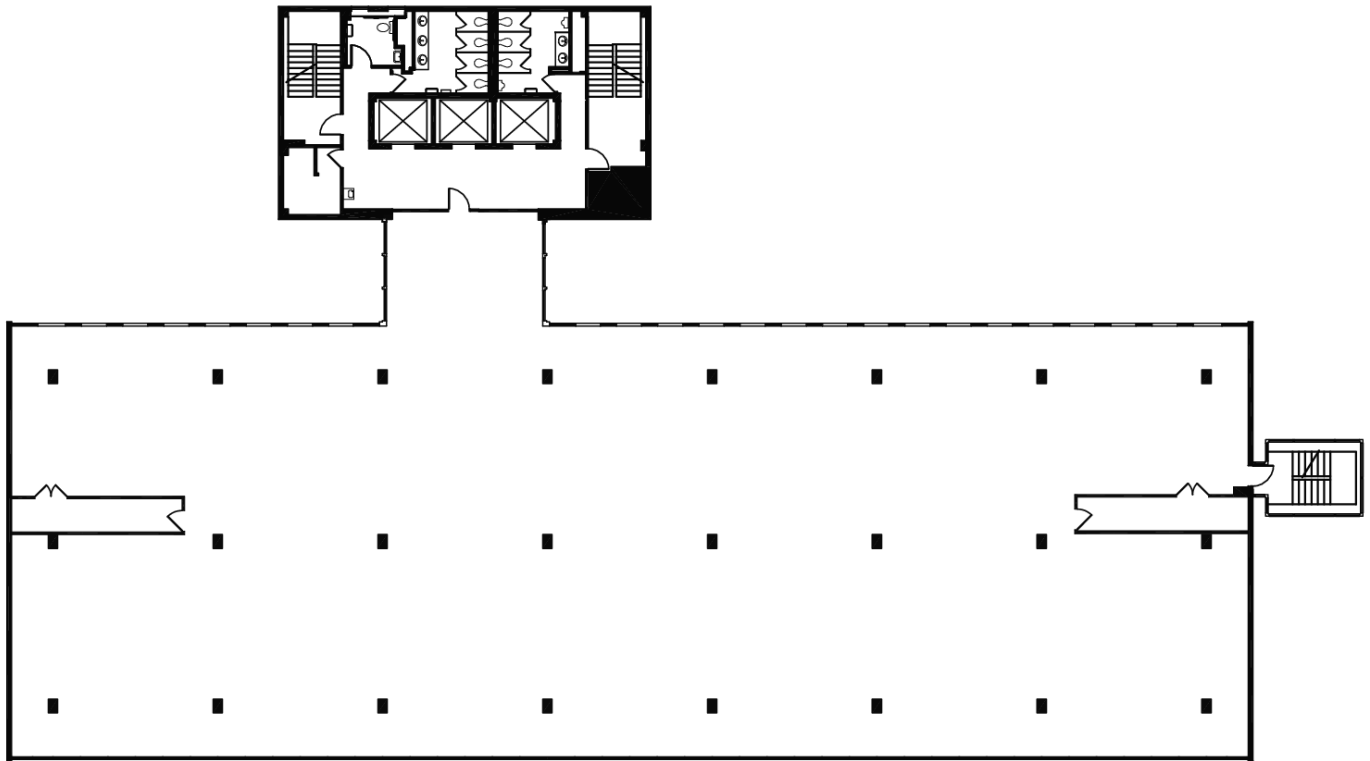
Suite	Size	Description
8th Floor	13,000 SF	Full Floor Available Immediately

# 6010 EXECUTIVE BOULEVARD

NORTH BETHESDA



Suite 900  
13,014 SF



Suite	Size	Description
9th Floor	13,014 SF	Shell condition -- Full Floor Available Immediately.



**6010** EXECUTIVE  
BOULEVARD  
N O R T H   B E T H E S D A



Leasing Information:  
301.304.8300

**Ethan Bernardi**  
301.304.8397  
ebernardi@lpc.com

**Nathan Bortnick**  
301.304.8392  
nbortnick@lpc.com

**Lincoln**

Lincoln Property Company  
1101 Wootton Pkwy Suite 410  
Rockville, MD 20854

[www.lpc.com](http://www.lpc.com)