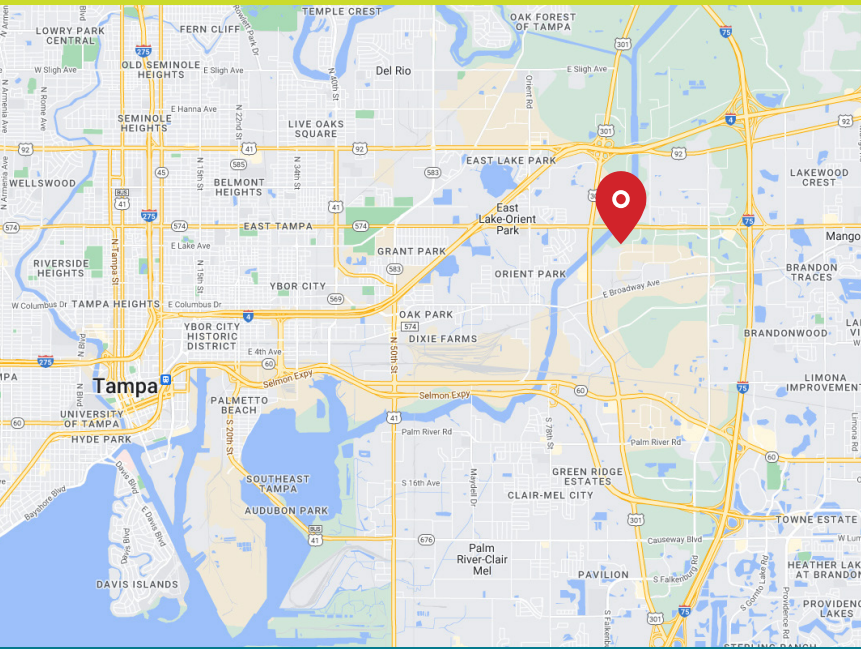


3849 COCONUT PALM DRIVE



3849 Coconut Palm Dr.
Tampa, FL 33619

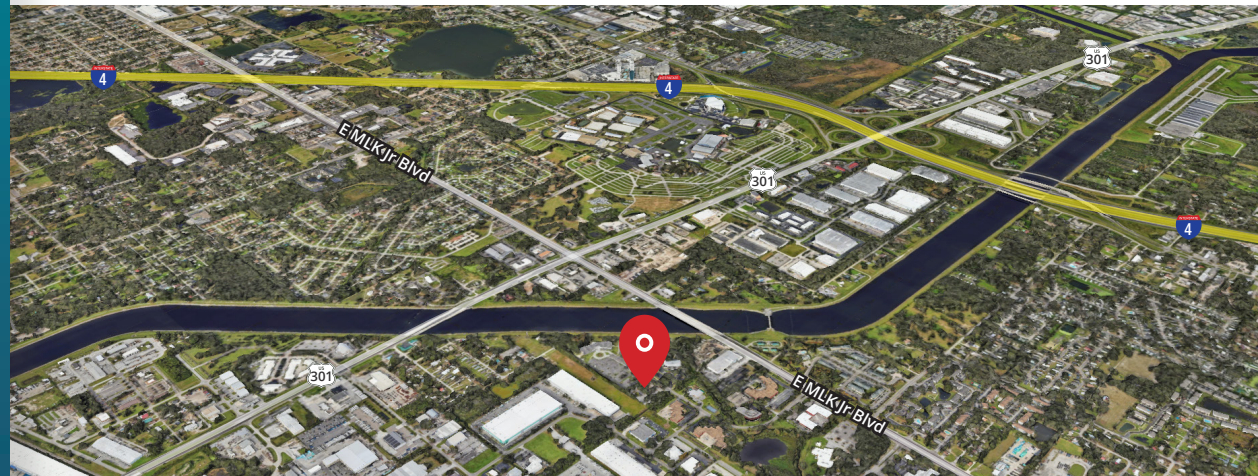
5,000-20,000 SF Built to Suit



PROPERTY HIGHLIGHTS

5,000-20,000 SF Built to Suit Available

- Fully paved and lit 1.96 acres lot
- Zone M (laydown yard, auto parking, outdoor storage, trailer parking)
- Situated in the heart of the East Tampa submarket, Coconut Palm offers easy access to key roads such as Interstate 4, Interstate 75, and US Highway 301



BRAD HUTTON | Director
813.793.8492 | Brad.Hutton@FranklinSt.com

DAVID HOVIS | Associate
813.345.5895 | David.Hovis@FranklinSt.com



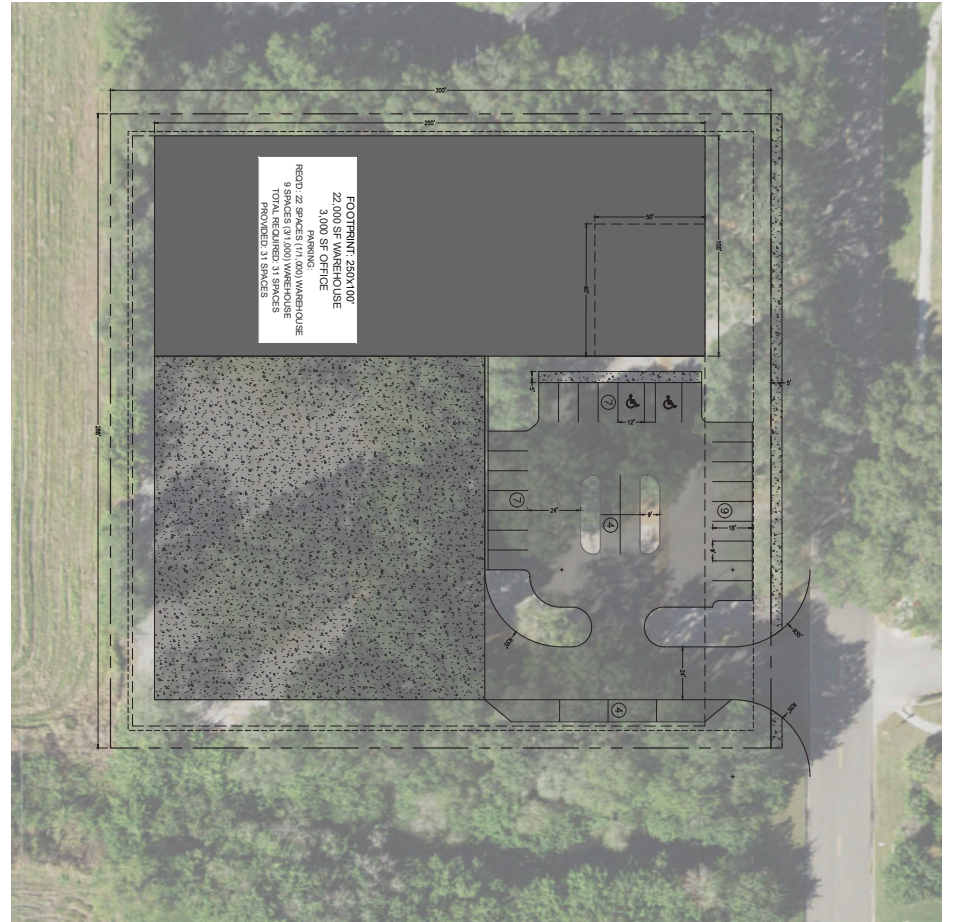
LICENSED REAL ESTATE BROKER | FranklinSt.com

CONCEPT SITE PLANS: 1.96 AC | 5,000-20,000 SF

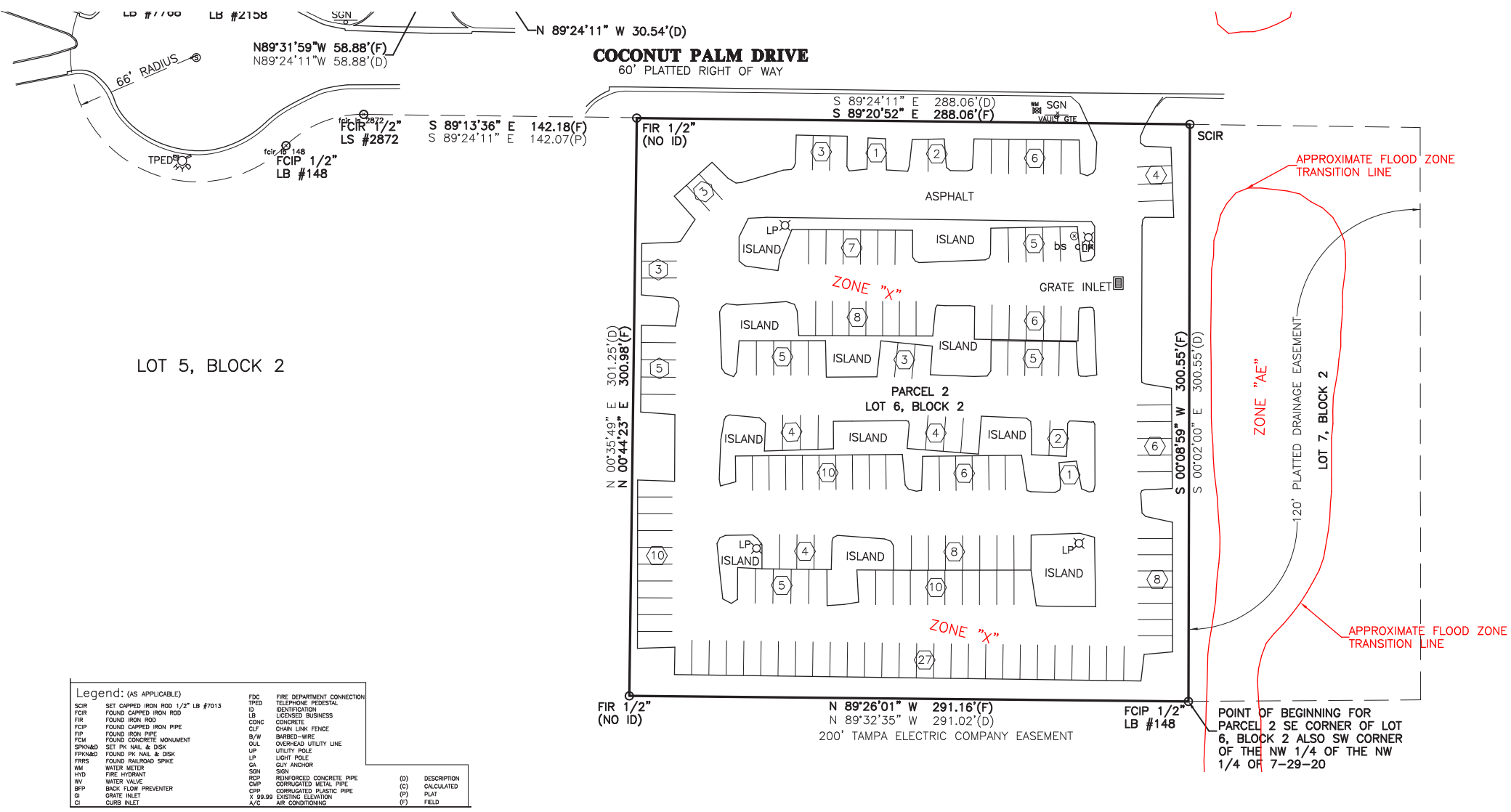
Option 1



Option 2



PROPERTY SURVEY



LOT 5, BLOCK 2

S 89°24'11" E 288.06'(D)
S 89°20'52" E 288.06'(F)

COCONUT PALM DRIVE
60' PLATTED RIGHT OF WAY

FIR 1/2" (NO ID)

S 89°13'36" E 142.18(F)
S 89°24'11" E 142.07(P)

FCIR 1/2" LS #2872

FCIP 1/2" LB #148

N 00°35'49" E 301.25(D)
N 00°44'23" E 300.98(F)

N 89°26'01" W 291.16'(F)
N 89°32'35" W 291.02'(D)

FCIP 1/2" LB #148

POINT OF BEGINNING FOR PARCEL 2 SE CORNER OF LOT 6, BLOCK 2 ALSO SW CORNER OF THE NW 1/4 OF THE NW 1/4 OF 7-29-20

Legend: (AS APPLICABLE)			
SCIR	SET CAPPED IRON ROD 1/2" LB #7013	FDC	FIRE DEPARTMENT CONNECTION
FCIR	FOUND CAPPED IRON ROD	TPED	TELEPHONE PEDestal
FIR	FOUND IRON ROD	ID	IDENTIFICATION
FCIP	FOUND CAPPED IRON PIPE	LCB	LOCKED BUSINESS
FIP	FOUND IRON PIPE	CONC	CONCRETE
FCM	FOUND CONCRETE MONUMENT	CLF	CHAIN LINK FENCE
SPK&D	SET PK NAIL & DISK	B/W	BARBED-WIRE
FRK&D	FOUND PK NAIL & DISK	OUL	OVERHEAD UTILITY LINE
FRS	FOUND RAILROAD SPIKE	LP	UTILITY POLE
WM	WATER METER	LP	LIGHT POLE
HYD	FIRE HYDRANT	GA	GUY ANCHOR
WV	WATER VALVE	SGN	SGN
BFP	BACK FLOW PREVENTER	RCP	REINFORCED CONCRETE PIPE
CI	CURB INLET	CMP	CORRUGATED METAL PIPE
		CIP	CORRUGATED PLASTIC PIPE
		X	EXISTING ELEVATION
		A/C	AIR CONDITIONING
		(D)	DESCRIPTION
		(C)	CALCULATED
		(P)	PLAT
		(F)	FIELD