

FOR LEASE ± 2,821 SF RETAIL SPACE KATELLA SQUARE



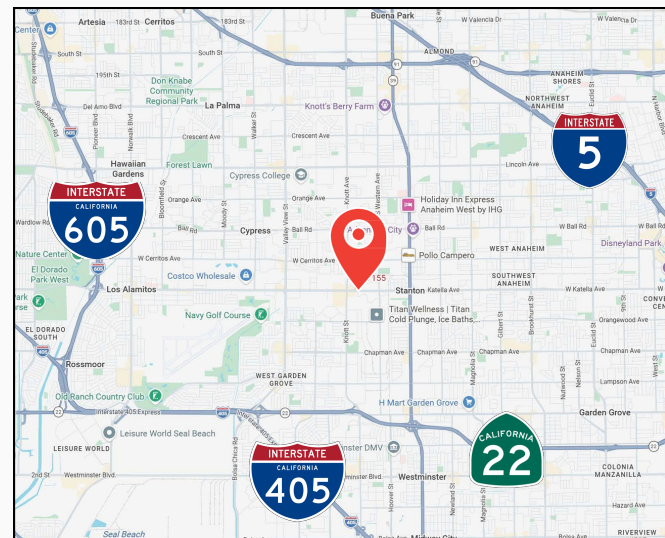
7155 KATELLA AVE., STANTON, CA 90680

PROPERTY HIGHLIGHTS

- Partially Built-Out as a Restaurant or Cafe Space
- Walk-in Cooler
- Hood Vent
- Ample Parking
- Heavy Traffic Counts
- Surrounded by Multi-Retail and Restuarant Tenants

Tom Gonzalez proudly presents a Second-generation bakery available for a new operator looking to expand. The bakery space consists of 2,821 square feet and includes a walk-in cooler and a hood vent. This location would be ideal for a catering business seeking storage, as well as the advantage of retail sales. The space can be divided into approximately 1,400 SF.

Contact us to schedule a private tour.



TOM GONZALEZ
Senior Vice President
(714) 704-4554 (Direct)
tomg@ashwillassociates.com
CA DRE Lic.01487226

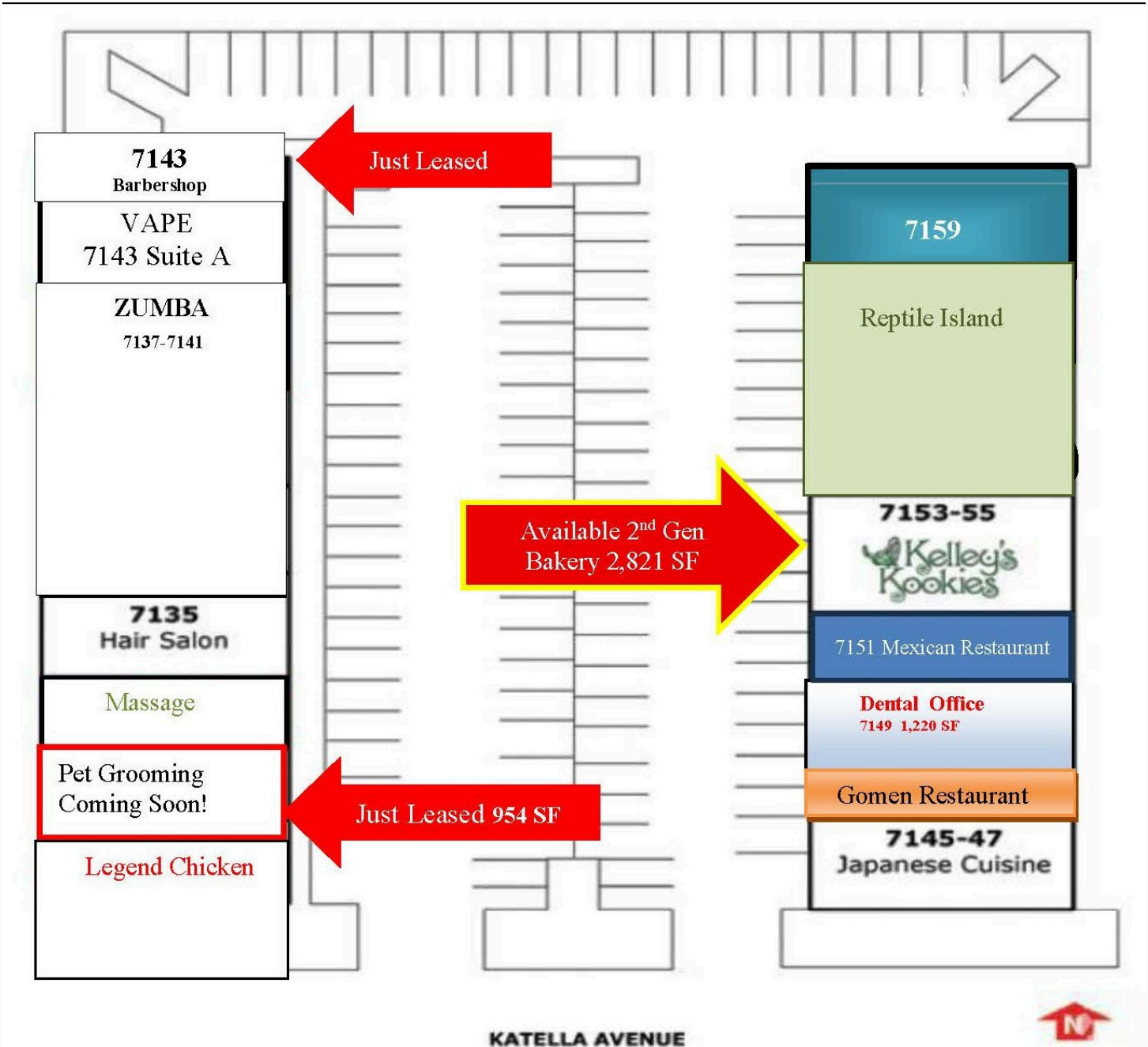
Disclaimer: This Information contained herein is believed reliable but not guaranteed. Photos may be digitally altered or artistic renderings. All trademarks and images are the property of their respective owners. Buyers and Tenants should verify information independently.

**Ashwill
Associates**
COMMERCIAL REAL ESTATE

CORP. DRE LIC.01291393

FOR LEASE ± 2,821 SF RETAIL SPACE KATELLA SQUARE

KATELLA SQUARE



KATELLA AVENUE



TOM GONZALEZ

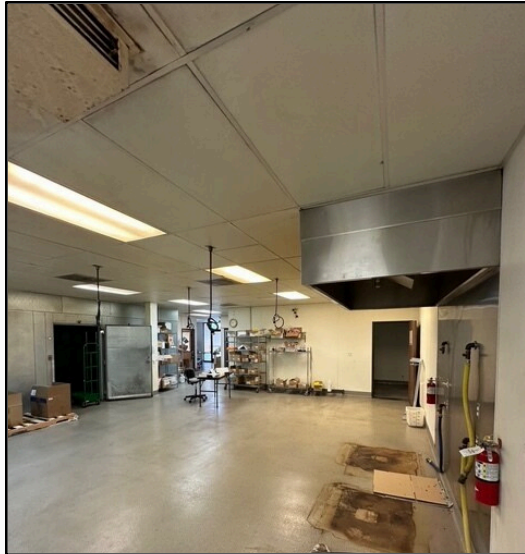
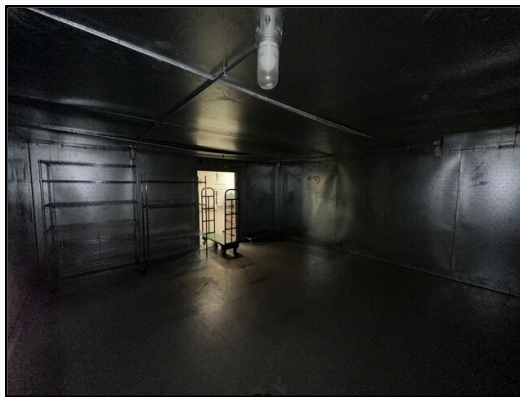
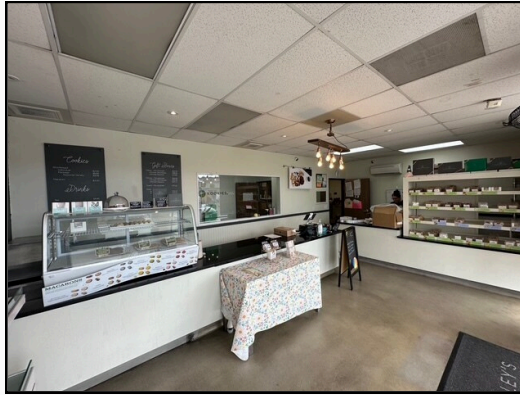
Senior Vice President
(714) 704-4554 (Direct)
tomg@ashwillassociates.com
CA DRE Lic.01487226

Disclaimer: This Information contained herein is believed reliable but not guaranteed. Photos may be digitally altered or artistic renderings. All trademarks and images are the property of their respective owners. Buyers and Tenants should verify information independently.



CORP. DRE LIC.01291393

FOR LEASE ± 2,821 SF RETAIL SPACE KATELLA SQUARE



TOM GONZALEZ
Senior Vice President
(714) 704-4554 (Direct)
tomg@ashwillassociates.com
CA DRE Lic.01487226

Disclaimer: This Information contained herein is believed reliable but not guaranteed. Photos may be digitally altered or artistic renderings. All trademarks and images are the property of their respective owners. Buyers and Tenants should verify information independently.



CORP. DRE LIC.01291393