

INDU  
STRY

MEDICAL OFFICE  
**LAST SUITE AVAILABLE!**  
±2,819 RSF

13160  
MINDANAO WAY  
MARINA DEL REY

FOR LEASE



INDUSTRYPARTNERS.COM  
310 395 5151  
CA BRE No. 01900833

DANIEL PICKART  
dp@industrypartners.com  
CA BRE No. 01914551

TRAVIS LANDRUM  
dp@industrypartners.com  
CA BRE No. 01435827

FOR LEASE

MEDICAL OFFICE

13160 MINDANAO WAY MARINA DEL REY CA 90292

**2ND FLOOR SUITES**

Ste 205/209

**AVAILABLE RSF**

± 2,819 RSF

**RATE**

\$5.10 / SF per Mo. / MG

**TERM**

5-10 Years

**OCCUPANCY**

Immediate

**PARKING**

4 per 1,000 SF

**Creative office building in the heart of Marina Del Rey**

**FEATURES**

Creative, natural light-filled ground level corner suite with glass roll up door

Architecture by HansonLA

Polished concrete floors throughout

Abundant and walkable lunch spots, minutes away from the marina, beach, and nature reserves

Build to suit medical suits in a variety of sizes and possible layouts.

Walkable to numerous amenities in the immediate area

Surface parking for convenient patient experience

No warranty or representation is made to the accuracy of the foregoing information. Terms of sale or lease are subject to change or withdrawal without notice.



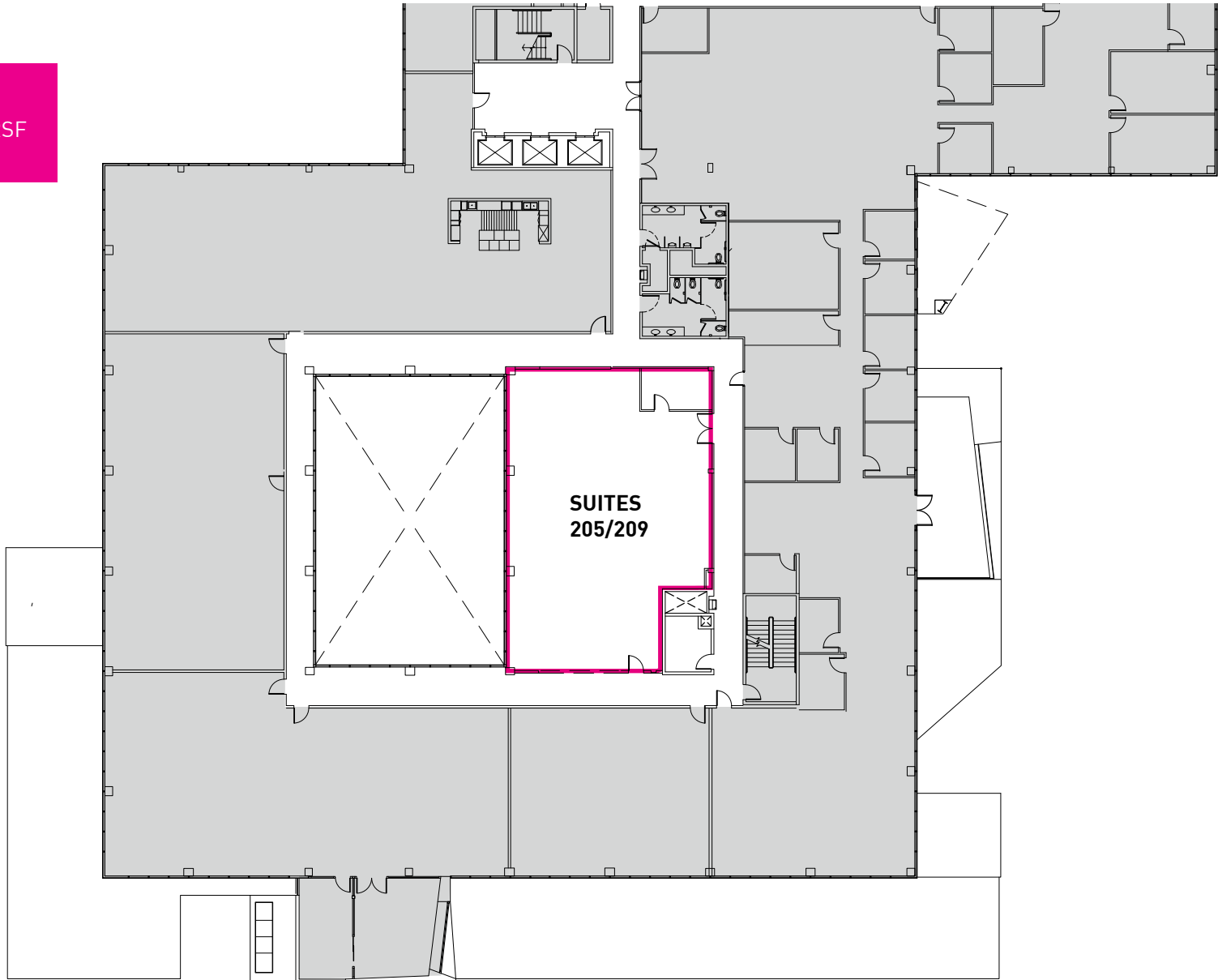
FOR LEASE

MEDICAL OFFICE

13160 MINDANAO WAY MARINA DEL REY CA 90292

FLOOR PLAN  
SECOND FLOOR

SECOND FLOOR  
Ste 205/209 ± 2,819 RSF







About the neighborhood

Marina del Rey is an unincorporated seaside community in LA County, with a marina that is a major boating and water recreation destination.

The marina is North America's largest man-made small-craft harbor and is home to approximately 5,000 boats.

The area is a popular tourism destination for water activities such as paddle board and kayak rentals, dining cruises, and yacht charters.

This Westside locale is approximately 4 miles (6.4 km) south of Santa Monica, and 4 miles north of LAX.



No warranty or representation is made to the accuracy of the foregoing information. Terms of sale or lease are subject to change or withdrawal without notice.