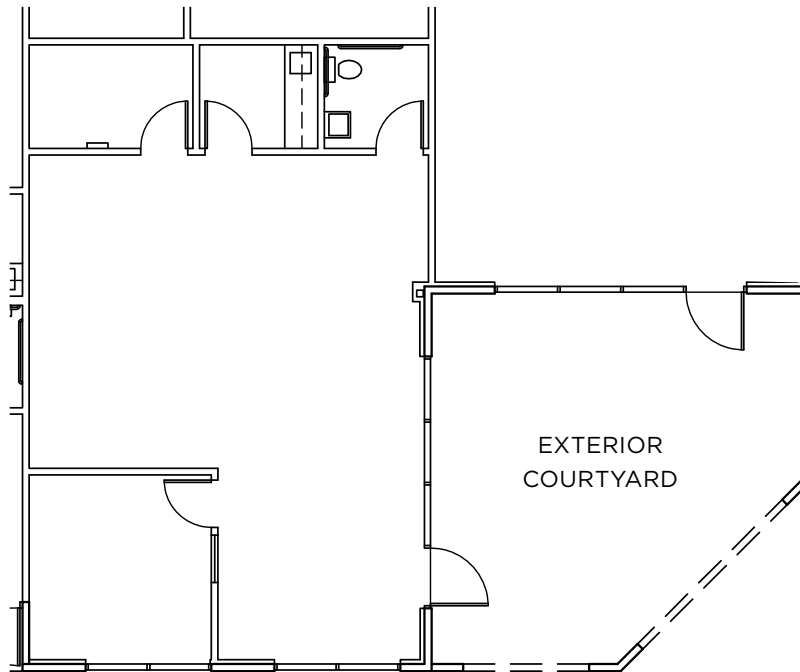


BUILDING 860

Suite B

1,017 SF

- 100% office space
- High quality finishes throughout
- Courtyard access
- One (1) conference room
- Break room / kitchen space
- Available May 1, 2026



Suite B

TO SCHEDULE A TOUR OR FOR ADDITIONAL INFORMATION, PLEASE CONTACT:

MATT BRACCO | RE License No: 01185434 | +1 925 200 3537 | matt.bracco@jll.com

CHRIS NEEB | RE License No: 01324612 | +1 707 495 7777 | chris.neeb@jll.com

GLEN DOWLING | RE License No: 00890450 | +1 707 227 7800 | glen.dowling@jll.com

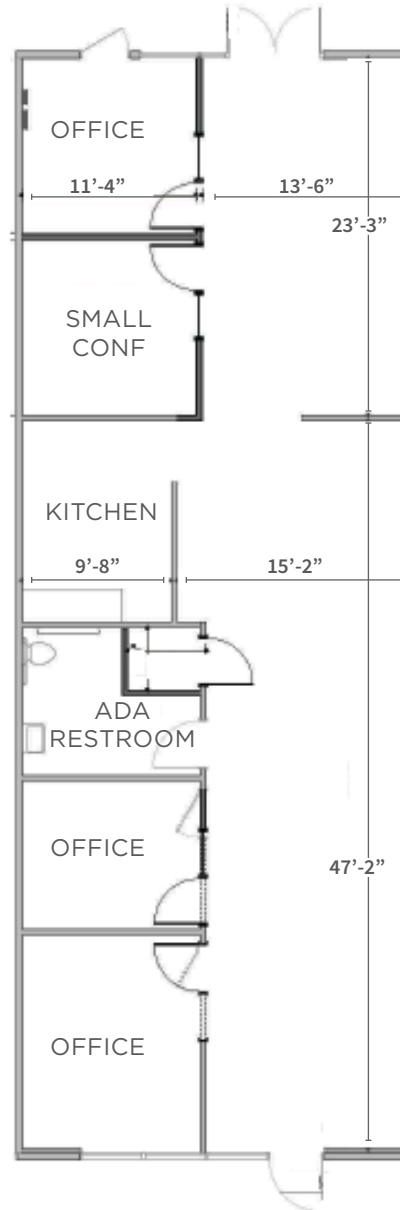


BUILDING 860

Suite E

1,854 SF

- 100% improved flex space
- Rear double glass doors can be replaced with a grade level door
- Two (2) private offices; large open area
- Kitchenette
- Exterior courtyard access
- Access to front and rear parking lots



TO SCHEDULE A TOUR OR FOR ADDITIONAL INFORMATION, PLEASE CONTACT:

MATT BRACCO | RE License No: 01185434 | +1 925 200 3537 | matt.bracco@jll.com

CHRIS NEEB | RE License No: 01324612 | +1 707 495 7777 | chris.neeb@jll.com

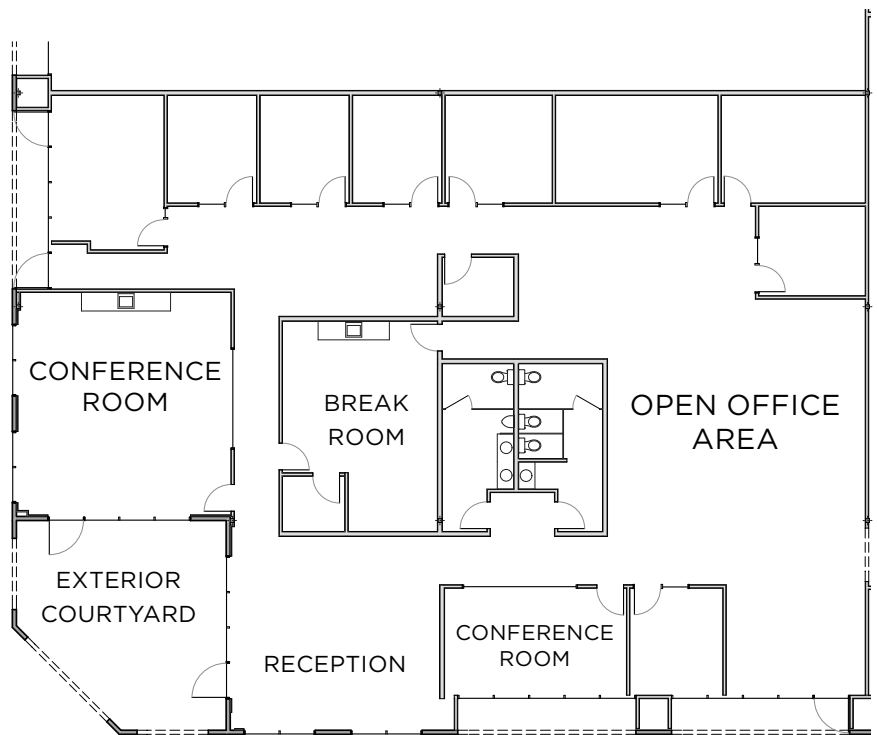
GLEN DOWLING | RE License No: 00890450 | +1 707 227 7800 | glen.dowling@jll.com

BUILDING 860

Suite O

6,270 SF

- 100% office space
- Corner suite
- Refurbished in 2016
- High quality finishes throughout
- Courtyard access
- One (1) conference room & one (1) large training /meeting room
- Extensive glass line



Suite O

TO SCHEDULE A TOUR OR FOR ADDITIONAL INFORMATION, PLEASE CONTACT:

MATT BRACCO | RE License No: 01185434 | +1 925 200 3537 | matt.bracco@jll.com

CHRIS NEEB | RE License No: 01324612 | +1 707 495 7777 | chris.neeb@jll.com

GLEN DOWLING | RE License No: 00890450 | +1 707 227 7800 | glen.dowling@jll.com

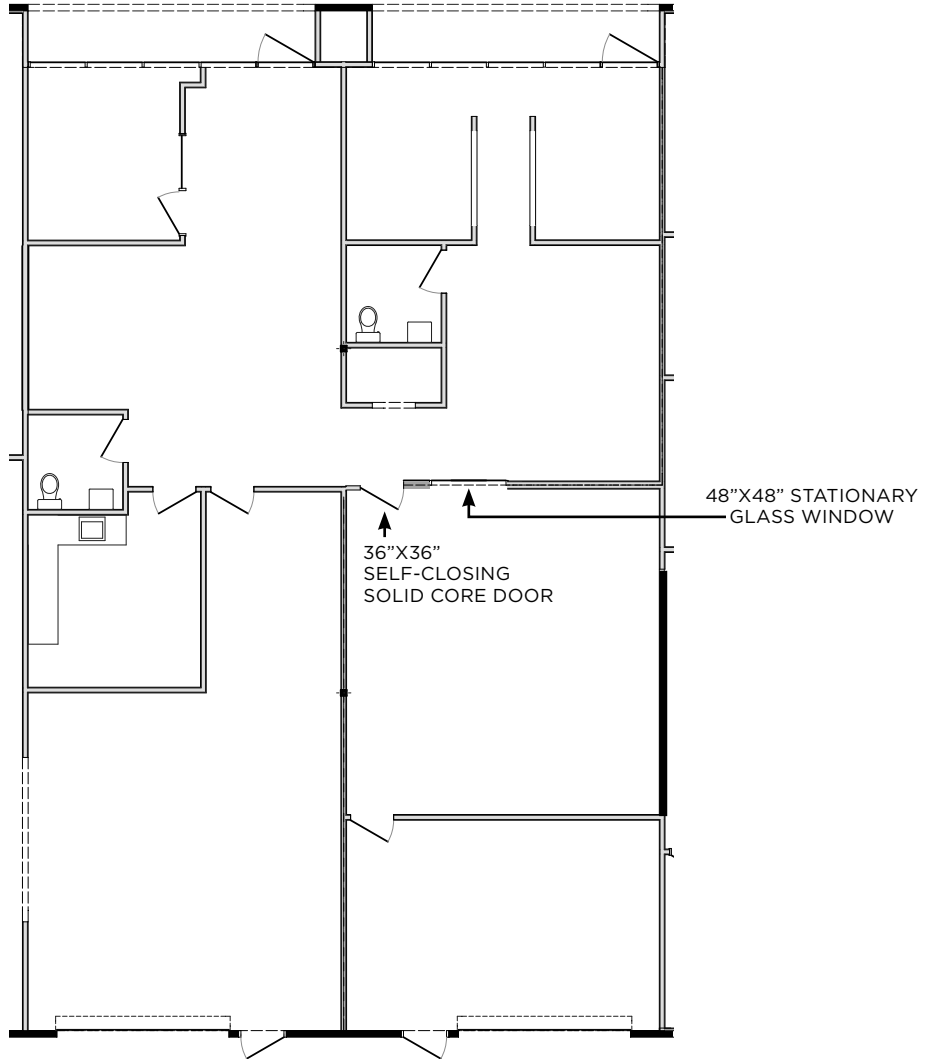


BUILDING 870

Suite C&D

3,196 SF

- Industrial/office suite
- Two roll-up doors
- Open office spaces with one private office or conference room
- Kitchen/Break room and two restrooms
- Access to front and rear parking lots
- Available May 1, 2026



Suite C&D

TO SCHEDULE A TOUR OR FOR ADDITIONAL INFORMATION, PLEASE CONTACT:

MATT BRACCO | RE License No: 01185434 | +1 925 200 3537 | matt.bracco@jll.com

CHRIS NEEB | RE License No: 01324612 | +1 707 495 7777 | chris.neeb@jll.com

GLEN DOWLING | RE License No: 00890450 | +1 707 227 7800 | glen.dowling@jll.com

