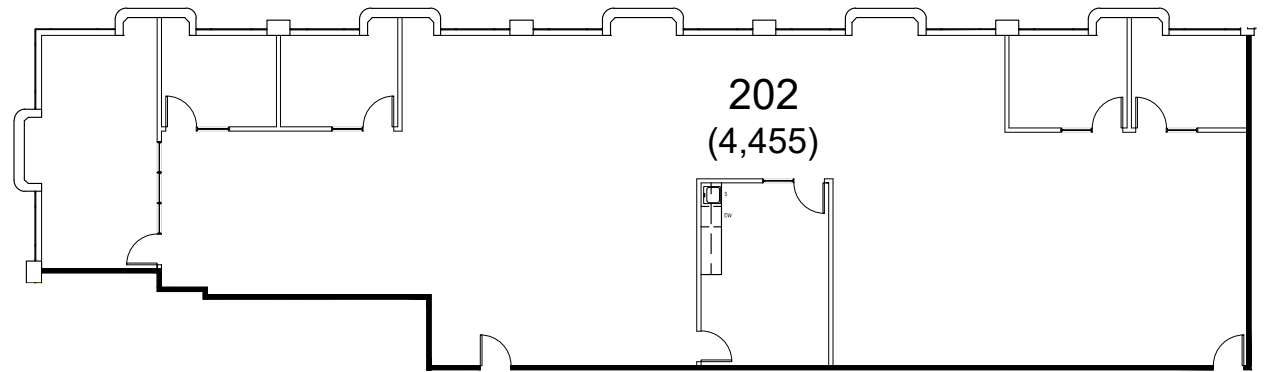




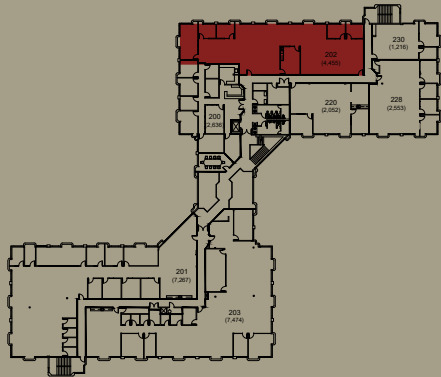
## 2<sup>nd</sup> Floor

Suite 202 / ±4,455 SF

- 4 Private Offices
- Conference Room
- Break Room
- Large Open Space
- Available Now



### KEY PLAN



### CONTACT US

Chris Blom | Executive Vice President | +1 650 480 2057 | [chris.blom@jll.com](mailto:chris.blom@jll.com) | LIC #02031205  
Ben Paul | Vice Chairman | +1 650 401 2123 | [ben.paul@cushwake.com](mailto:ben.paul@cushwake.com) | LIC #01210872

[BACK TO AVAILABILITIES](#)

