



2920 Landco Rd

2920 Landco Rd, Bakersfield, CA 93308



Craig Hummel Sr.

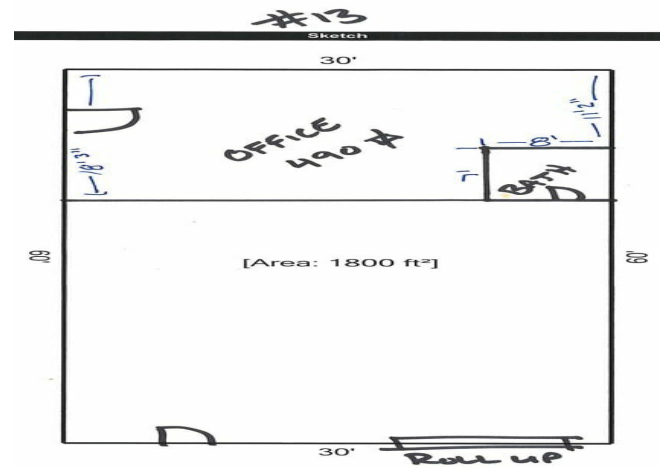
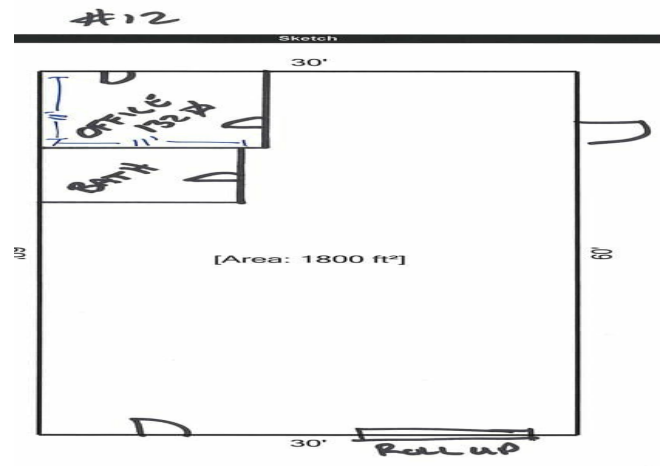
CENTURY 21 Jordan-Link & Company
5060 California Ave, Suite 1150, Bakersfield, CA 93309
ca@hummelandassociates.com
(661) 444-1602



2920 Landco Rd

\$12.60 /SF/YR

1,625 Sq.Ft. shop/ warehouse. Roll up door, front entry door, two offices 11.5x11 and 11.5x16.5. Upstairs loft/ storage. Fresh paint and carpet. Ready to move in....



Rental Rate:	\$12.60 /SF/YR
Property Type:	Flex
Property Subtype:	Light Manufacturing
Building Class:	C
Rentable Building Area:	13,167 SF
Year Built:	1987
Rental Rate Mo:	\$1.05 /SF/MO

1st Floor Ste 12

Space Available	1,800 SF
Rental Rate	\$12.60 /SF/YR
Date Available	Now
Service Type	Modified Gross
Office Size	132 SF
Space Type	Relet
Space Use	Industrial
Lease Term	3 - 10 Years

+/-1,800 sq.ft. industrial/shop space with office reception and bathroom. 2 walk doors. 1 Roll up door. Current tenant is in the process of moving out. Pictures coming soon.

1

1st Floor Ste 13

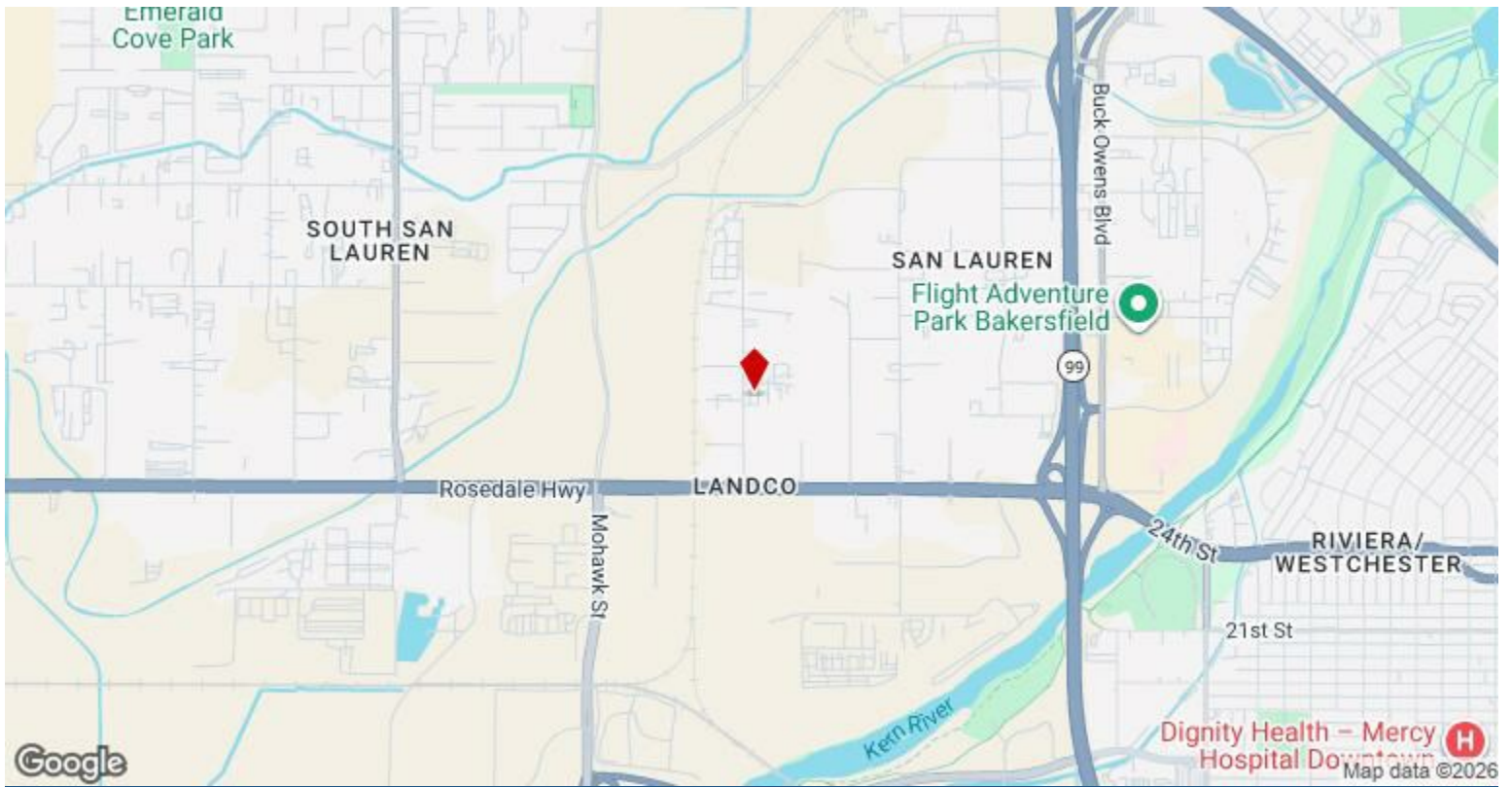
Space Available	1,800 SF
Rental Rate	\$12.60 /SF/YR
Date Available	Now
Service Type	Modified Gross
Office Size	132 SF
Space Type	Relet
Space Use	Industrial
Lease Term	3 - 10 Years

+/-1,800 sq.ft. industrial/shop space with office reception and bathroom. 2 walk doors. 1 Roll up door. Current tenant is in the process of moving out. Pictures coming soon.

2

Major Tenant Information

Tenant	SF Occupied	Lease Expired
Absolute Paint & Custom	-	
Applied Industrial Technologies	3,950	
Efrain Nunez	9,000	
Gardeners Supply Inc	-	
J & V Autosale	-	
Landco Automotive	-	



2920 Landco Rd, Bakersfield, CA 93308



Property Photos



Property Photos

