

NEW TO MARKET!

MEDICAL CONDO FOR LEASE

±1,380 SQUARE FEET

200 JOSE FIGUERES AVENUE, UNIT 265 | SAN JOSE, CA.



BUILDING HIGHLIGHTS:

- Pharmacy On-Site
- Cancer Center
- Outpatient Surgery Center
- Private Doctor's Parking Lot
- Ample Visitor Parking
- Building Elevators

EXCELLENT LOCATION:

- At Regional Hospital Center
- Medical Community Surroundings
- High Traffic Count
- Immediate Proximity to Highway 680 & 101
- Walk to Nearby Retail Services

RITCHIE Commercial
RESPONSIBLE REAL ESTATE

Please Contact Exclusive Agents:

ROXANA BAKER, CCIM

408.282.8505

rbaker@ritchiecommercial.com

DRE Lic. 00794921

JANA GLUCKMAN

408.529.7988

jgluckman@ritchiecommercial.com

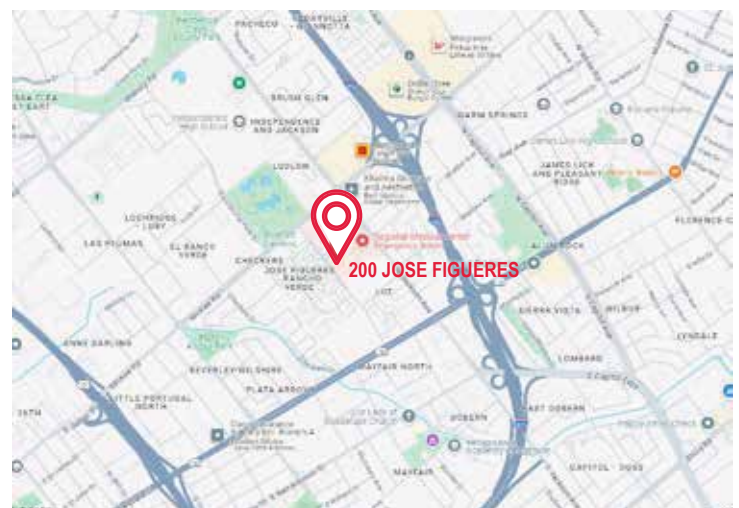
DRE Lic. 00693034

FRANK ANDRE

408.282.8519

fsandre@ritchiecommercial.com

DRE Lic. 01973849

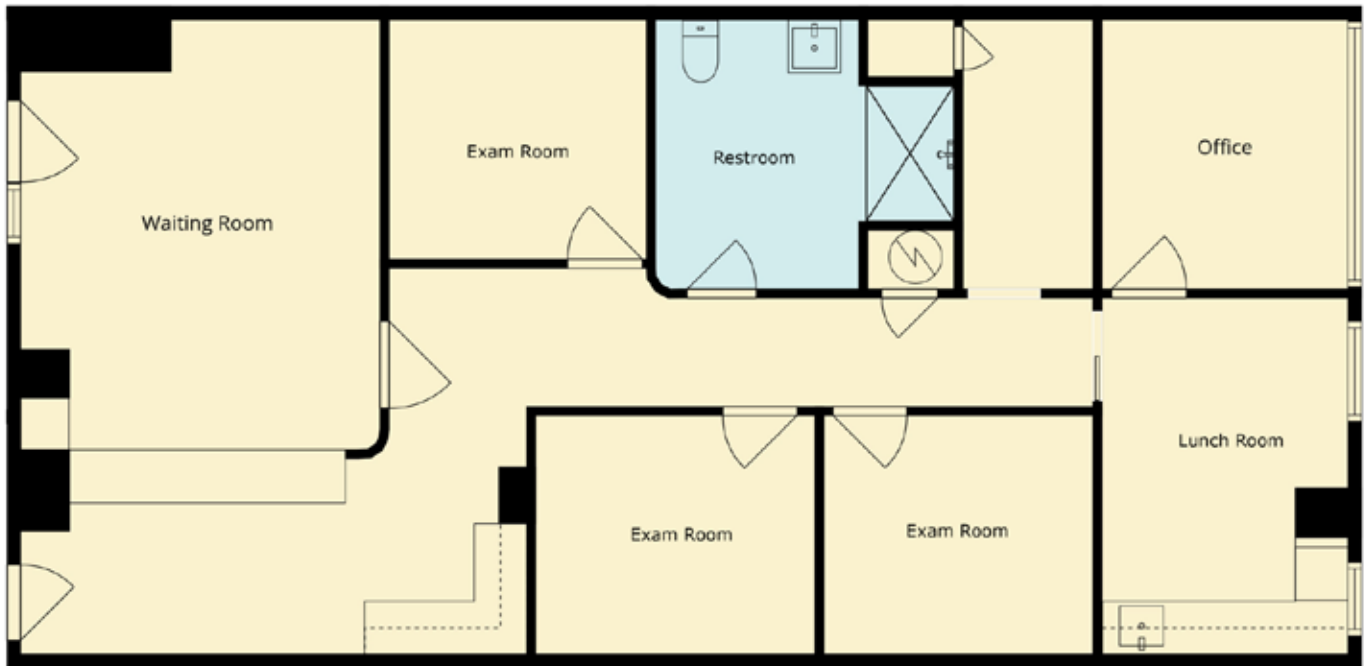


NEW TO MARKET!

MEDICAL CONDO FOR LEASE

±1,380 SQUARE FEET

200 JOSE FIGUERES AVENUE, UNIT 265 | SAN JOSE, CA.



RITCHIE *Commercial*
RESPONSIBLE REAL ESTATE

Please Contact Exclusive Agents:

ROXANA BAKER, CCIM

408.282.8505 rbaker@ritchiecommercial.com
DRE Lic. 00794921

JANA GLUCKMAN

408.529.7988 jgluckman@ritchiecommercial.com
DRE Lic. 00693034

FRANK ANDRE

408.282.8519 fandre@ritchiecommercial.com
DRE Lic. 01973849

34 W. SANTA CLARA STREET, SAN JOSE, CA 95113

DRE # 01209214 | www.ritchiecommercial.com

1 408.971.2700 f 1 408.971.1600

San Francisco | San Jose | Santa Cruz